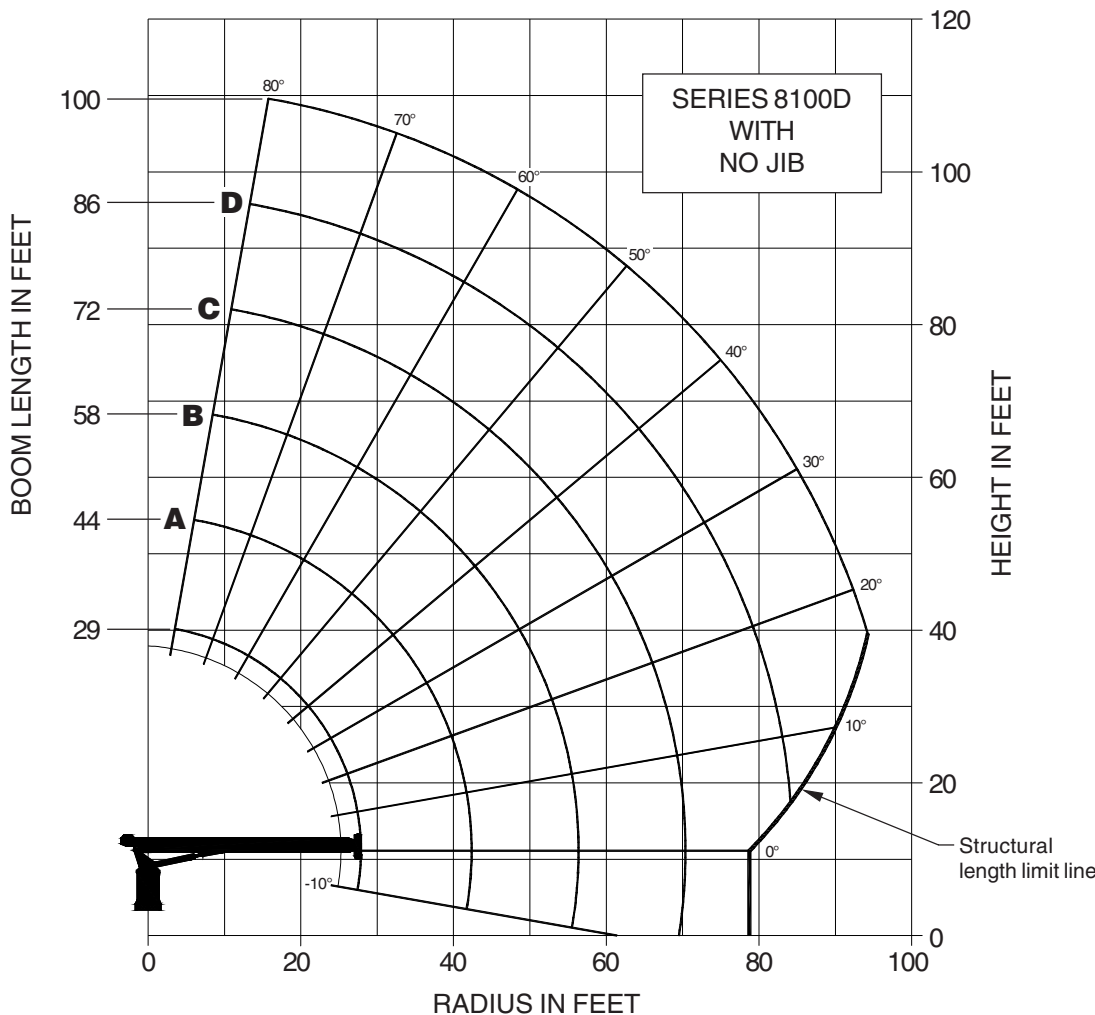


NATIONAL CRANE CORPORATION

877919



- NOTE:**
1. Capacities do not exceed 85% stability.
 2. Shaded areas are structurally limited capacities.

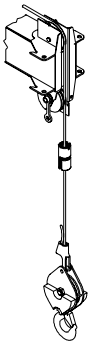
LMI OPERATING CODE	
OPERATING MODE	
01	Main Boom - No Jib Stowed
11	Man Basket On Main Boom

LOADLINE EQUIPMENT DEDUCT (lb)	
Downhaul weight	150
One sheave block	305
Two sheave block	355
Three sheave block	575

LOAD RATINGS

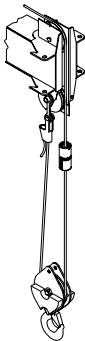
LOAD RADIUS (FEET)	LOADED BOOM ANGLE	29FT BOOM (lb)	LOADED BOOM ANGLE	A 44FT BOOM (lb)	LOADED BOOM ANGLE	B 58FT BOOM (lb)	LOADED BOOM ANGLE	C 72FT BOOM (lb)	LOADED BOOM ANGLE	D 86FT BOOM (lb)	LOADED BOOM ANGLE	100FT BOOM (lb)
5	79	46,000										
8	72.5	31,500	79	28,500								
10	68	26,300	76	23,800								
12	63.5	22,600	73.5	20,300	78	18,500						
14	59	19,800	70.5	17,800	76	16,200	79.5	14,700				
16	54	17,500	68	15,800	74	14,300	77.5	13,000				
20	43	14,200	61	12,800	69.5	11,700	74.5	10,700	77.5	9,850		
25	25	10,500	54	10,300	64	9,400	70	8,600	74	7,950	77	7,350
30			45	8,500	58.5	7,800	66	7,000	70.5	6,450	74	6,100
35			35	6,900	53	6,550	61.5	5,950	67	5,500	71	5,150
40			20	5,200	46	5,550	56.5	5,100	63	4,700	67.5	4,500
45					38	4,700	51.5	4,400	59.5	4,100	64.5	3,900
50					28.5	3,850	46	3,800	55	3,550	61	3,400
55					14	2,650	40	3,250	51	3,100	57.5	2,900
60							33	2,700	46.5	2,700	54	2,550
65							24	2,150	41	2,300	50	2,100
70							6.5	1,050	35.5	1,900	46	1,900
75									29	1,550	42	1,600
80									20	1,100	37	1,300
85											32	1,050
90											25	750
	0	5,900	0	2,900	0	1,400	0	500				

1 PART LINE



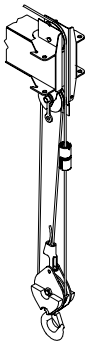
MAX. PULL
7,700 lb

2 PART LINE



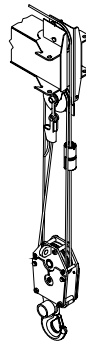
MAX. PULL
15,400 lb

3 PART LINE



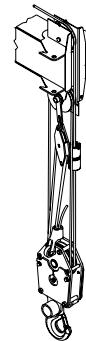
MAX. PULL
23,100 lb

4 PART LINE



MAX. PULL
30,800 lb

5 PART LINE



MAX. PULL
38,500 lb

6 PART LINE



MAX. PULL
46,000 lb

NOTICE

- Do not deadhead line block against boom tip when extending boom.
- Keep at least 3 wraps of loadline on drum at all times.
- Use only 9/16" diameter rotation resistant cable with 38,500 lb breaking strength on this machine.
- Maximum capacity with "burst of speed" is 3,000 lb.