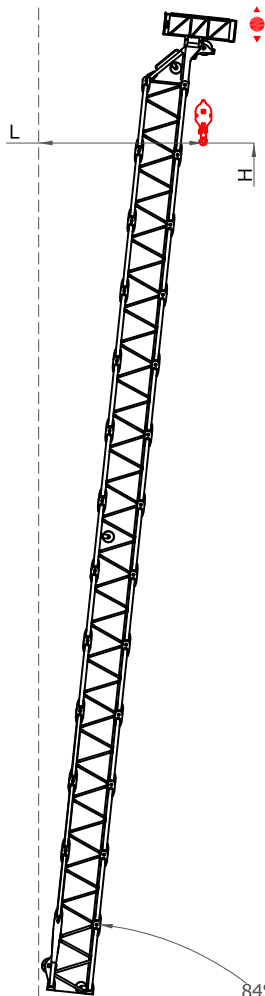
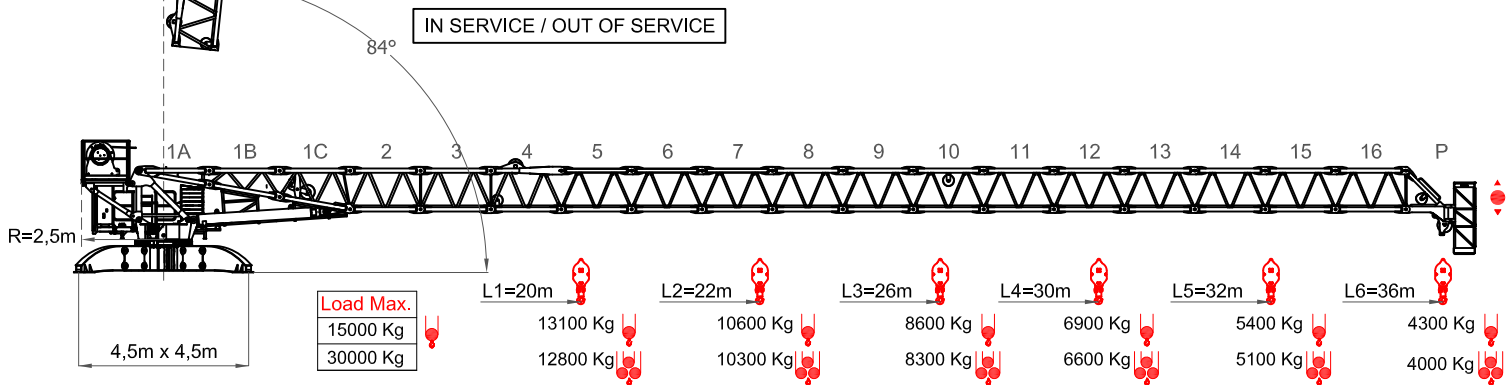
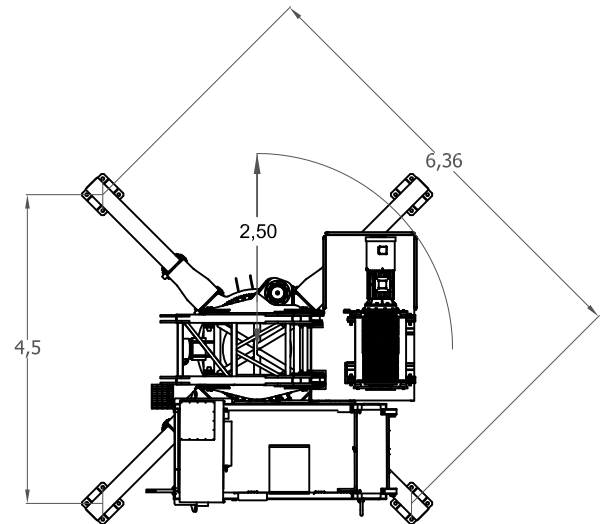


DRAFT

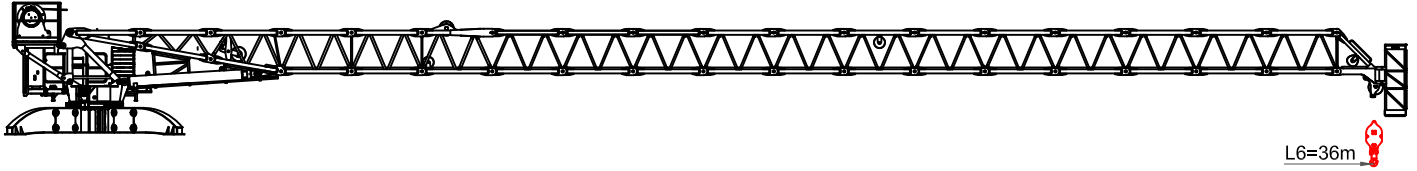


IN SERVICE / OUT OF SERVICE		
Max Angle (°)	84	
Jib (m)	L (m)	H (m)
36	4,68	36,9
32	4,26	32,9
30	4,05	30,9
26	3,63	26,9
22	3,21	22,9
20	3,01	20,9



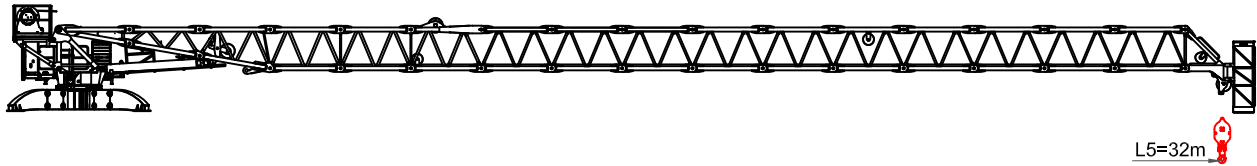
L1	20 m = 1 + 2 + 3 + 4 + 5 + 6 + 7 + 8 + P
L2	22 m = 1 + 2 + 3 + 4 + 5 + 6 + 7 + 8 + 9 + P
L3	26 m = 1 + 2 + 3 + 4 + 5 + 6 + 7 + 8 + 9 + 10 + 11 + P
L4	30 m = 1 + 2 + 3 + 4 + 5 + 6 + 7 + 8 + 9 + 10 + 11 + 12 + 13 + P
L5	32 m = 1 + 2 + 3 + 4 + 5 + 6 + 7 + 8 + 9 + 10 + 11 + 12 + 13 + 14 + P
L6	36 m = 1 + 2 + 3 + 4 + 5 + 6 + 7 + 8 + 9 + 10 + 11 + 12 + 13 + 14 + 15 + 16 + P

Curvas de cargas - Load diagrams - Lastkurven - Courbes de charges - Curve di carico -
График грузоподъёмности



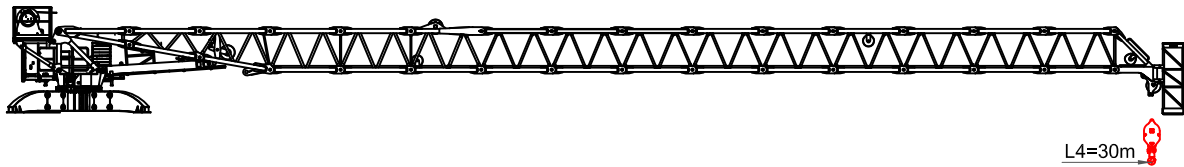
36 m

Max. load	10	14	16	18	20	22	24	26	28	30	32	34	36	m
18,1m	15000	15000	15000	15000	12888	11180	9844	8734	7569	6663	5664	4987	4300	Kg
10,4m	30000	21015	17352	14548	12462	10779	9440	8064	7221	5959	5344	4677	4000	Kg



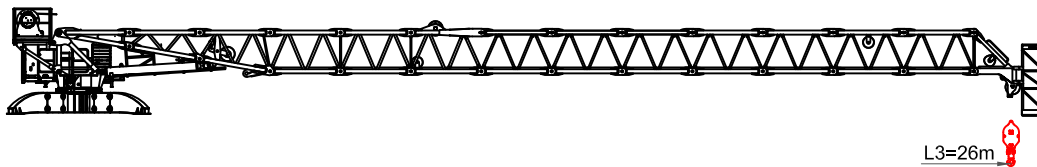
32 m

Max. load	10	12	14	16	18	20	22	24	26	28	30	32	m
18,1m	15000	15000	15000	15000	15000	12763	11301	9779	8113	7301	6189	5400	Kg
10,5m	30000	24697	21697	17249	14847	12380	10934	9429	7782	6979	6101	5100	Kg



30 m

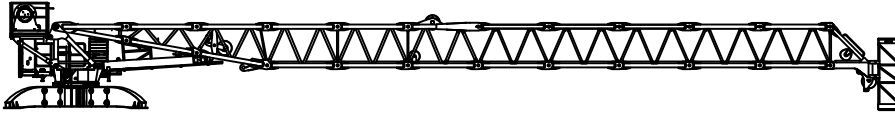
Max. load	10	12	14	16	18	20	22	24	26	28	30	m
19,1m	15000	15000	15000	15000	15000	13650	11909	10562	9075	8058	6900	Kg
11,2m	30000	27345	22834	18593	15550	13287	11563	10227	8754	7747	6600	Kg




26 m

Max. load	10	12	14	16	18	20	22	24	26	m
18,8m	15000	15000	15000	15000	15000	13651	11671	9963	8600	Kg
11,2m	30000	27456	22452	18861	16191	13319	11351	9654	8300	Kg



Curvas de cargas - Load diagrams - Lastkurven - Courbes de charges - Curve di carico -
График грузоподъёмности

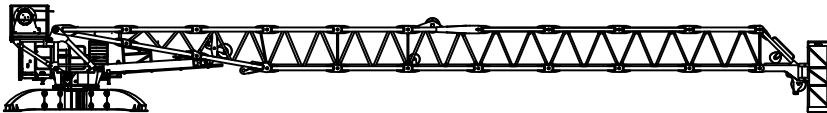



L2=22m 

22 m





Max. load	10	12	14	16	18	20	22	m
18,1m	15000	15000	15000	15000	15000	12627	10600	Kg 
11,0m	30000	27123	21156	17261	14613	12319	10300	Kg 





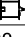
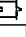

L1=20m 





20 m










Max. load	10	12	14	16	18	20	m
18,6m	15000	15000	15000	15000	15000	13100	Kg 
11,5m	30000	27464	22251	18743	15159	12800	Kg 


Mecanismos - Mechanisms - Antriebe - Mécanismes - Meccanismi - Приводы

75 Hp (55Kw) INV									
		D-Max 1040m 		H. 515m Ø20		D-Max 1040m 		H. 257m Ø20	
	m/min	0-20	0-28	0-36	0-86	0-10	0-14	0-18	0-43
	Kg	15000	10000	7500	2500	30000	20000	15000	5000
	Kw	55	55	55	55	55	55	55	55

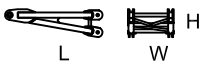



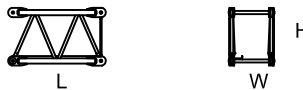
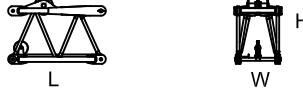

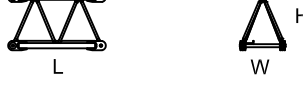

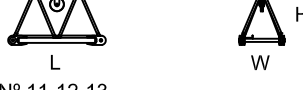



		 2 min. de 2° a 84° 2 minutes from 2° to 84°
	Kw	35
	r.p.m.	0-0,8
	Kw	2 x 11
	m/min	12-24
	Kw	4 x 3

- * Opcional / Optional / Opzionale
-  Elevación / Hoisting / Heben / Levage / Sollevamento
-  Elevación de pluma / Luffing / Ausleger-Einziehen / Relevage / Brandeggio
-  Orientación / Slewing / Schwenken / Orientation / Rotazione
-  Traslacion / Travelling / Schienenfahren / Translation / Traslazione
-  Cable / Rope / Seil / Câble / Fune

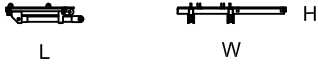
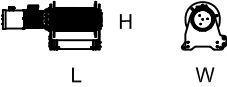
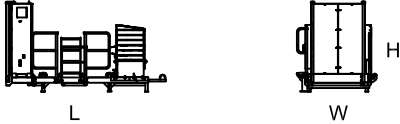
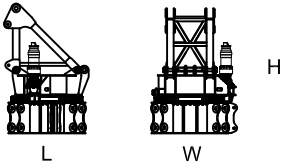
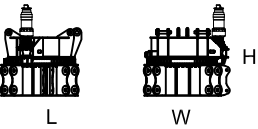
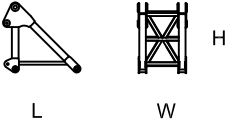




		400 V 50 Hz 60 Hz	100 m 4 x 50 mm ²
2000/14/CEE 2005/88/CEE	2006/95 /CEE		

 55 Kw	107 Kw	215 kVA
---	--------	---------

Dimensiones y transporte - dimensions and transport - Abmessungen und Transport -
dimensions et des transports - dimensioni e trasporti - Размеры и транспорта

	L(m)	W(m)	H(m)	Peso(Kg)
Pluma tramo primero / Jib heel section / Ausleger-Anlenkstück / Pied de fleche / Settore articolato di braccio				
Nº 1A 	2,22	1,14	1,05	900
Nº 1B 	2,22	1,12	1,40	1100
Nº 1C 	2,22	1,12	1,81	1800
Elemento intermedio de pluma / Intermediate jib section / Ausleger-Zwischenstück / Elément interm. de fleche / Spezzone di braccio				
Nº 2 	2,22	1,12	1,76	715
Nº 3 	2,22	1,12	1,76	675
Nº 4 	2,22	1,18	1,97	1005
Nº 5-6-7 	2,22	1,12	1,76	475
Nº 8 	2,22	1,12	1,76	415
Nº 9 	2,22	1,12	1,76	390
Nº 10 	2,22	1,12	1,76	400
Nº 11-12-13 	2,22	1,12	1,76	350
Nº 14-15-16 	2,22	1,12	1,76	305
Elemento final de pluma / Intermediate jib section / Ausleger-Zwischenstück / Elément interm. de fleche / Spezzone di braccio				
	1,44	1,05	2,39	425

Dimensiones y transporte - dimensions and transport - Abmessungen und Transport -
dimensions et des transports - dimensioni e trasporti - Размеры и транспорта

	L(m)	W(m)	H(m)	Peso(Kg)
Contrapluma / Counter-jib / Gegenausleger / Contre-fleche / Controbraccio 	1,76	2,56	0,45	575
Equipo de elevacion / Hoist winch / Heben / Levage / Sollevamento / подъёмник 	2,64	1,10	1,45	4450
Plataforma / Platform / Wartungs /Support /Supporto 	3,64	1,77	2,05	2350
Unidad de rotacion / Complete slewing unit / Drehbühne / Orientation / Rotazione     	2,21	2,21	4,36	4760
	2,21	2,31	2,95	3735
	1,76	1,22	2,00	1025
	1,73	1,87	1,78	2375
	2,21	2,31	1,17	1360
Patas de Apoyo / Base Support / Basisträger / support de base / Supporto di base 	1,84	0,45	0,96	425
Extension patas de Apoyo / Base Support extension / Grundplattenverlängerung / extension du support de base / Prolunga del supporto di base 	0,94	0,43	0,90	305

