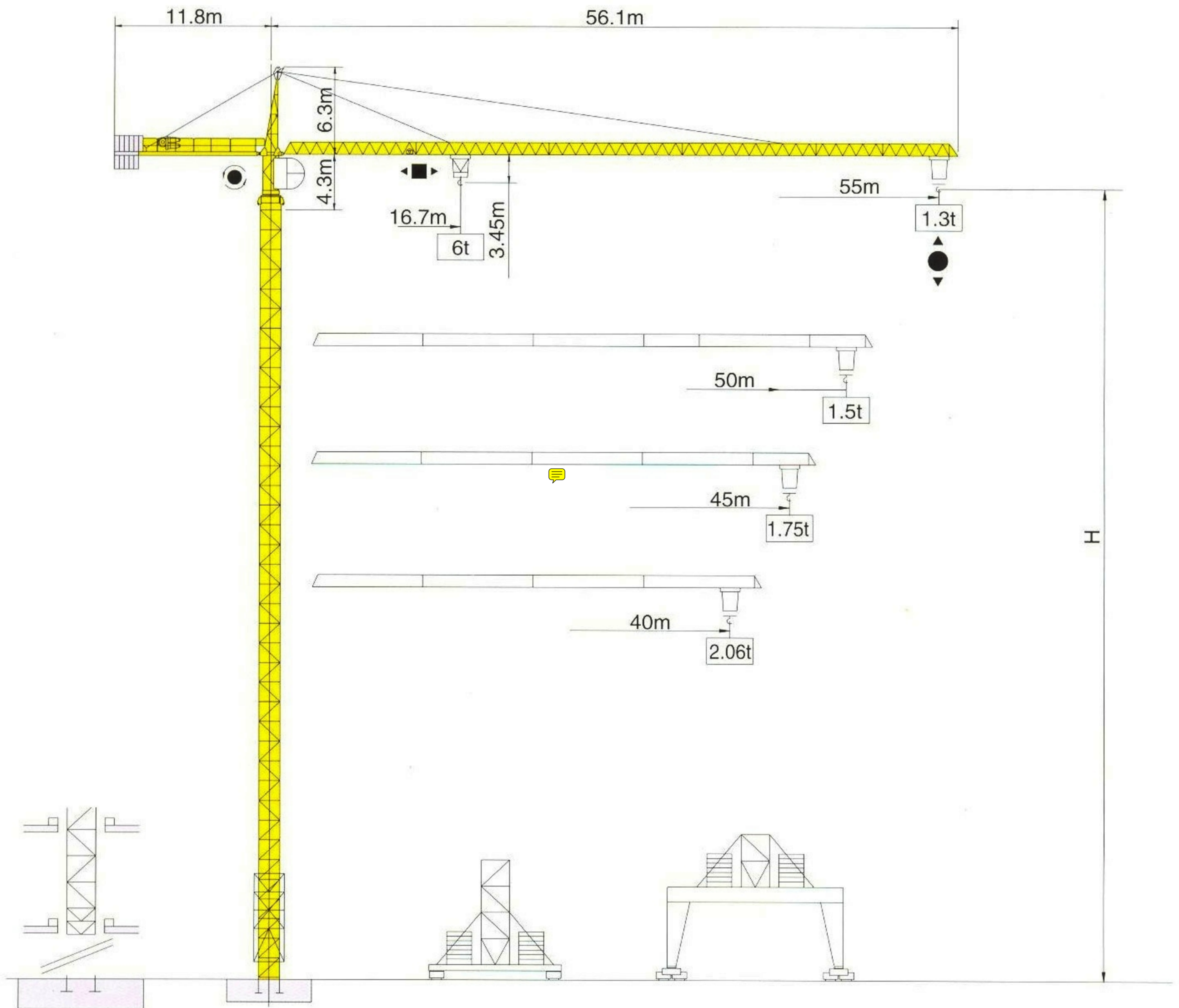




# TOWER CRANE S100 G6

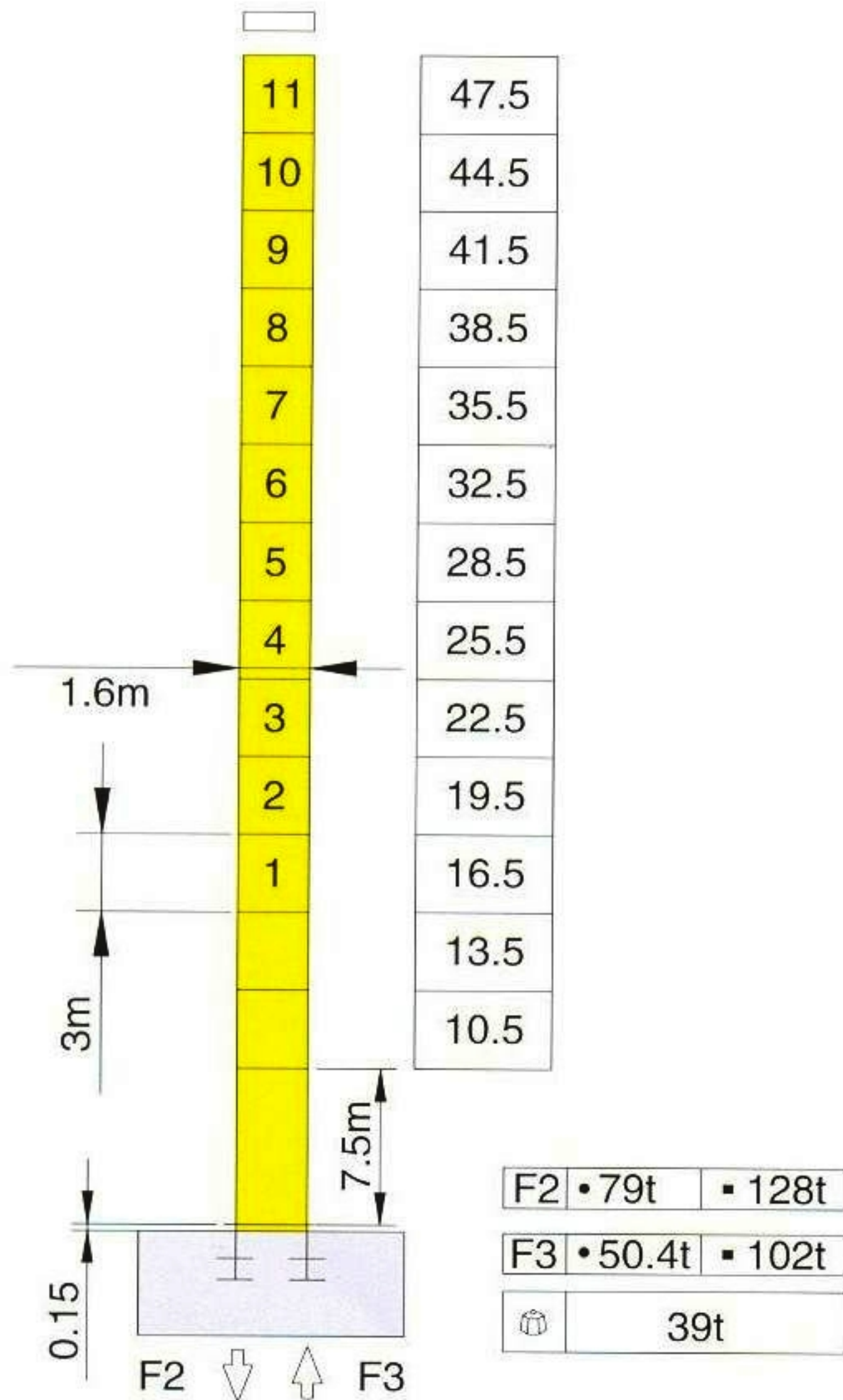
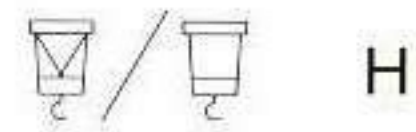


ISO9001

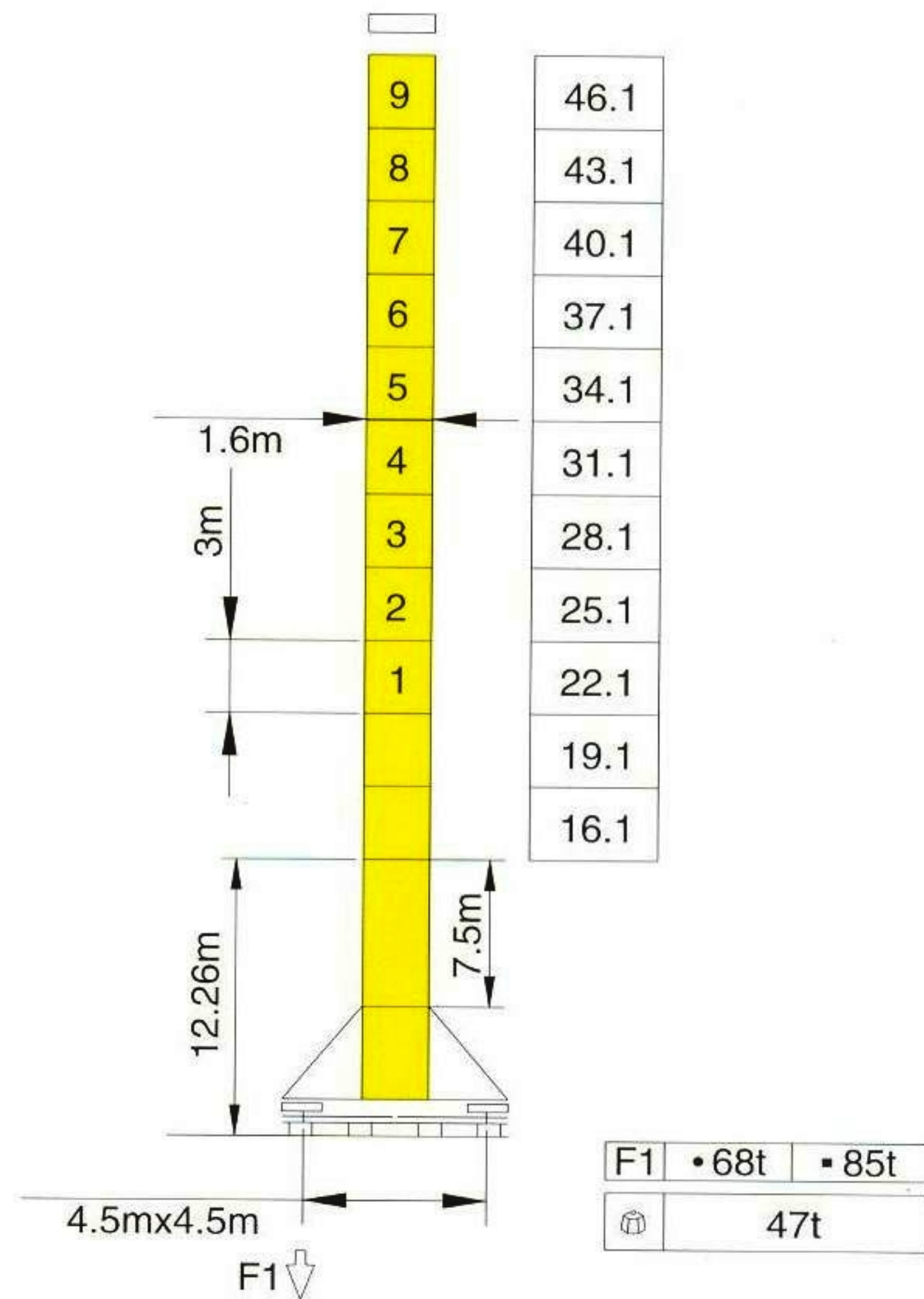
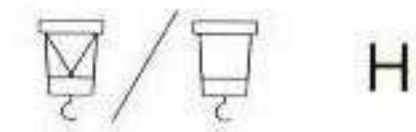


Mast: 1.6mx1.6m

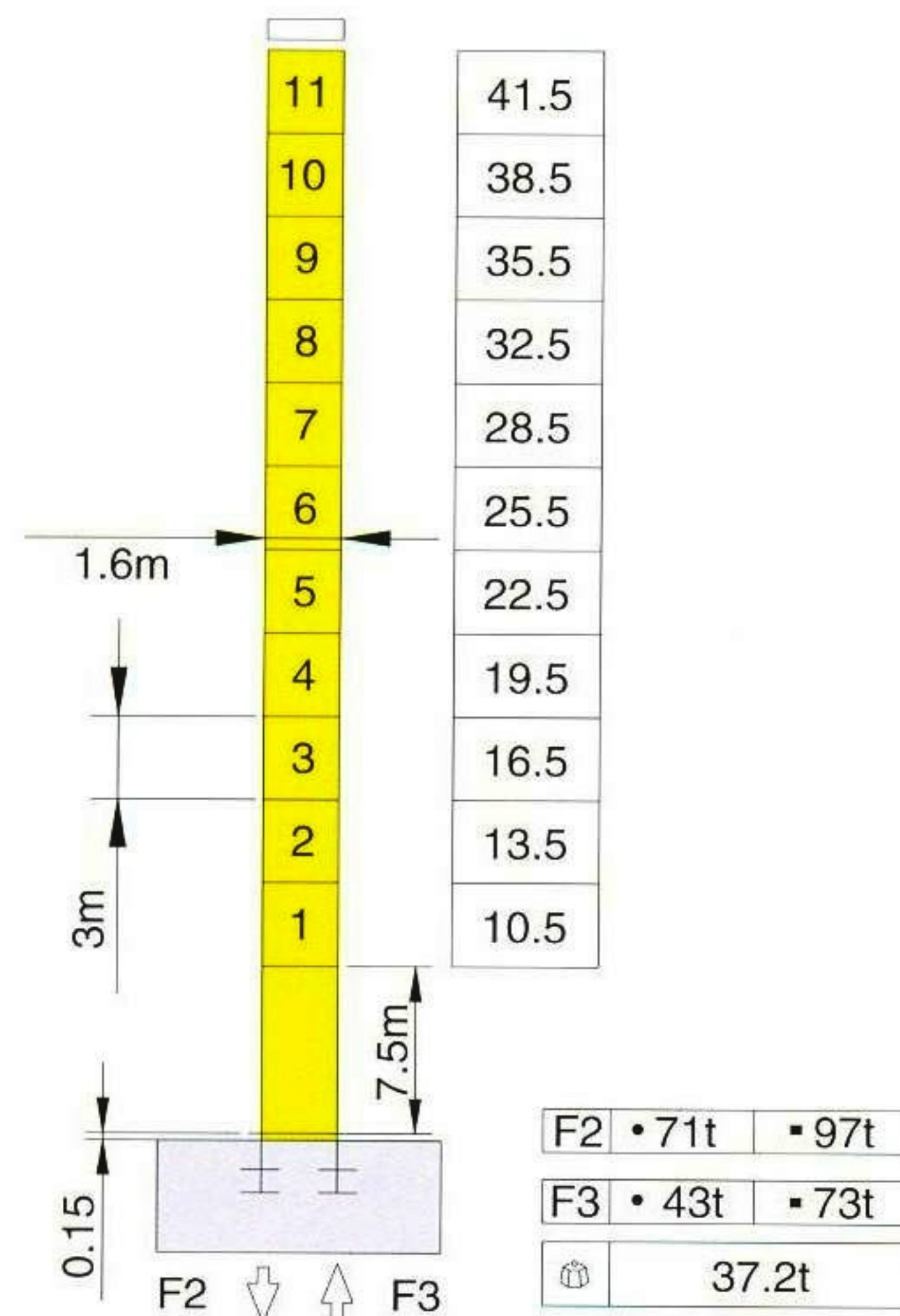
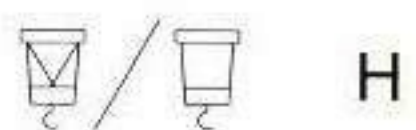
P4113



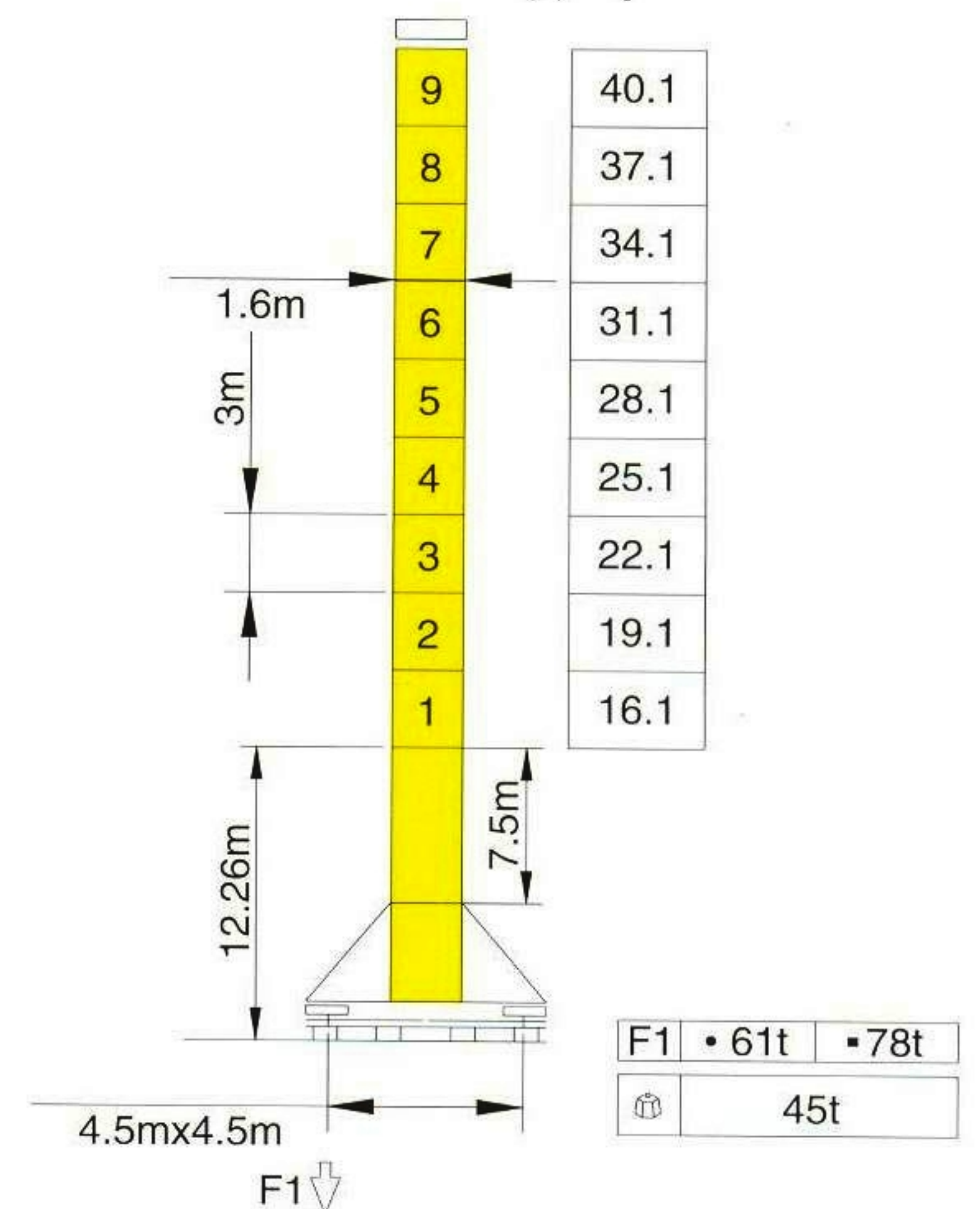
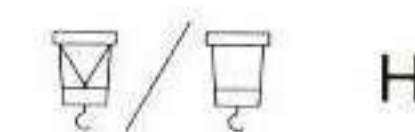
S493



P4111

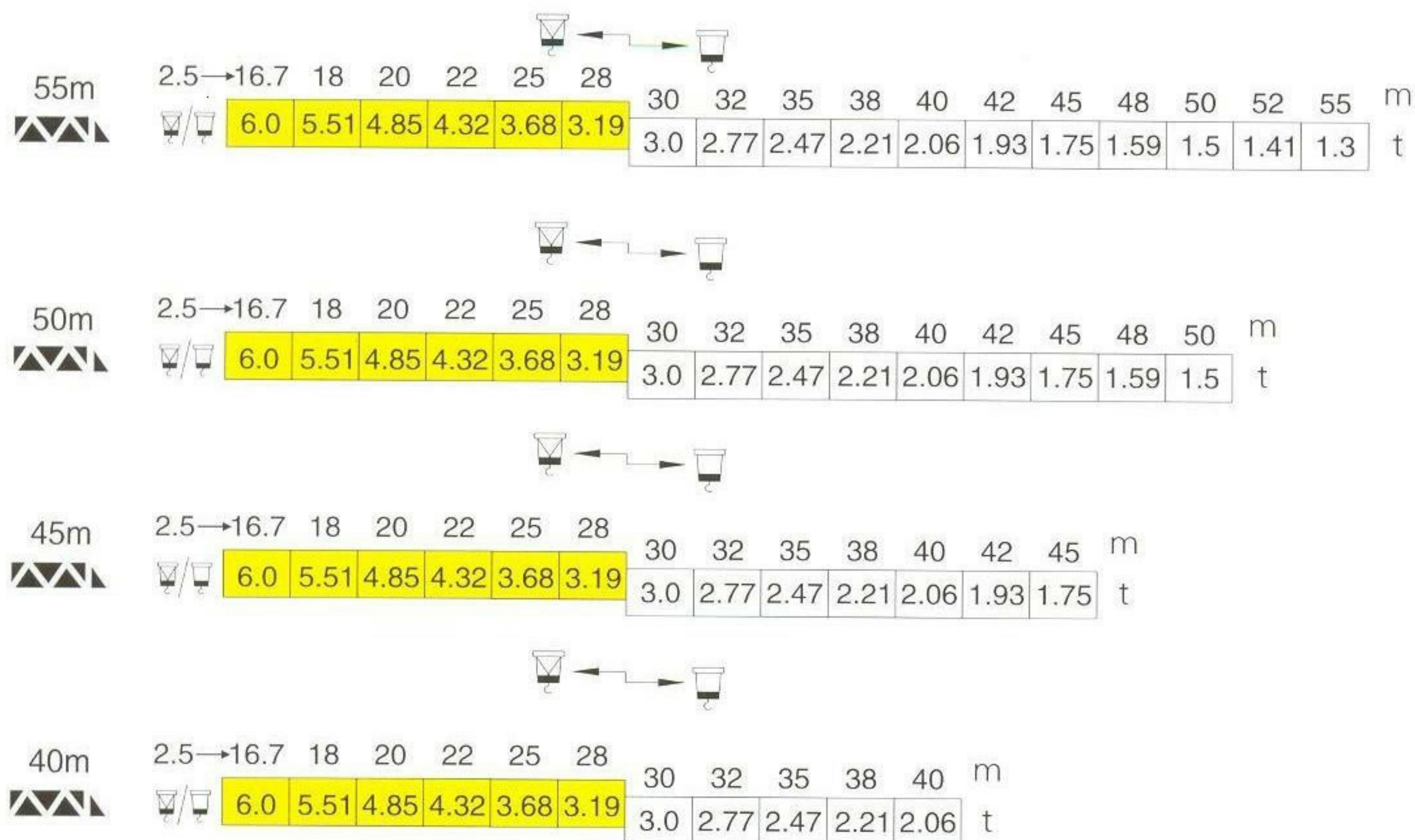


S491



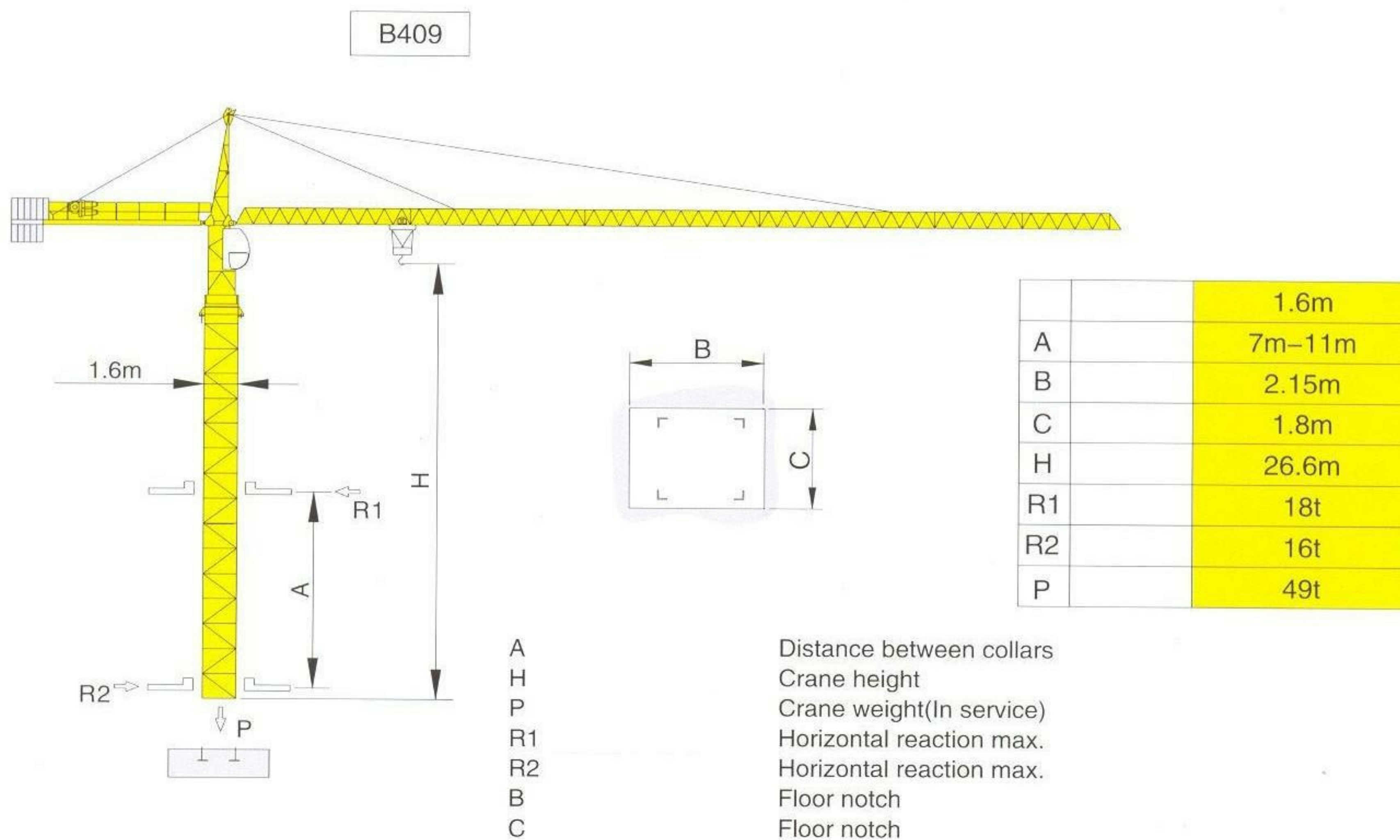
F	Reactions	<ul style="list-style-type: none"> <li>• In service</li> <li>▪ Out of service</li> </ul>	Self-load	Without load and ballast with longest jib and standard height.
---	-----------	--	-----------	--










Load Diagrams



Standard trolley 2/4 fall ( when using  subtract 0.1t from the loads  )

Climbing crane



Mechanisms Specification													kW	 m	
Hoisting		22LVF15	m/min	0-4	0-16	0-32	0-48	0-64	0-2	0-8	0-16	0-24	0-32	22	315 >315*
			t	3	3	3	2.25	1.5	6	6	6	4.5	3		
Trolleying		3T2V4	m/min	22/44										3.3/2.2	
Slewing		95SVT	r/min	0-0.8										95Nm	
Travelling		5TRVF	m/min	0-12.5-25										5.2x2	
 Power Supply			380v 50Hz / 440v 60Hz												
 Necessary Electric Power			50kVA												
Other Form Hoisting			※												
Consult us															

subject to modification

GB/T 13752



Alquileres@Tecomacointegral.com.ar

Tecomaco@Tecomacointegral.com.ar

Administración Central: Jerónimo Salguero 2533 8 Piso - CABA - Tel. 4011-5050  
 Exhibición y Ventas: Ruta Panamericana Km. 78 - Campana - Tel. (03489) 403040 ID 245\*2040  
 Bases Operativas en: Bahía Blanca, San Lorenzo, San Nicolás, Puerto Madryn.