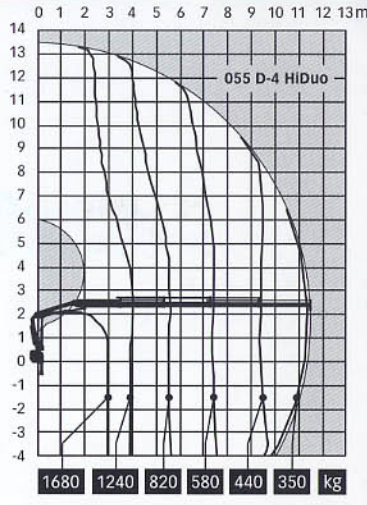


Technical Data (preliminary)	055 B-1 CL	055 B-2 Duo	055 B-2 HiDuo	055 D-3 Duo	055 D-4 HiDuo
Max lifting capacity in kNm (tm)	44 (4.5)	46 (4.7)	51 (5.2)	45 (4.6)	48 (4.9)
Hydraulic outreach, standard	5.5 m	7.4 m	7.4 m	9.3 m	11.4 m
Lifting height above installation plane	7.6 m	9.5 m	9.5 m	11.4 m	13.5 m
Outreach/lifting capacity, standard, m/kg	2.5/ 1 780 3.7/ 1 220 5.3/ 860	2.7/ 1 760 3.8/ 1 240 5.3/ 880 7.1/ 640	2.7/ 1 940 3.8/ 1 380 5.3/ 960 7.1/ 720	2.8/ 1 660 3.9/ 1 180 5.5/ 800 7.3/ 580 9.2/ 450	2.9/ 1 680 4.0/ 1 240 5.6/ 820 7.4/ 580 9.3/ 440 11.3/ 350
Lifting height at 1.0 m from crane column centre (mm)	2340	2210	2210	2145	2015
Height with horizontal boom (mm)	2290	2290	2290	2205	2205
Height in parked position (mm)	1900	1900	1900	1900	1900
Width in parked position (mm)	2150	2170	2170	2150	2170
Installation space (mm)	565	565	565	565	565
Slewing angle	410°	410°	410°	410°	410°
Slewing torque, gross	7.7 kNm	7.7 kNm	7.7 kNm	7.7 kNm	7.7 kNm
Working pressure	22 MPa	24 MPa	26 MPa	24 MPa	26 MPa
Rec. oil flow l/min	25-30	25-30	30-40	25-30	30-40
Weight without stabilizer legs	670 kg	760 kg	760 kg	825 kg	875 kg
Stabilizer leg system	98-147 kg	98-147 kg	98-147 kg	98-147 kg	98-147 kg



Note: Hiab cranes have been built to meet the highest standards of safety and service life and have been thoroughly tested. Design has been carried out in accordance with EN 12999. Hiab's CE-marked cranes comply with the EU's Machinery Directive. Hiab's certified Quality Assurance System complies with the ISO 9001.

Some of the items we describe in our literature may be extra equipment. Certain applications may require an official permit. We reserve the right to change technical specifications without prior notice.

**There are more variants available of the HIAB XS 055, please contact your local Hiab distributor.**

## For all-round performance, you can't beat the new HIAB XS 055

The new HIAB XS 055 range combines all the features and benefits you look for in a 5 tonne metre capacity truck crane – and a great deal more. You want compatibility with your fleet of medium size trucks, the 055 delivers. With its low tare weight the 055 contributes to improved transport economy. Installation is relatively straightforward. And, because the crane tucks away so neatly and tightly in its folded position, you get maximum load area, maximum payload and maximum productivity.

But don't let the small profile of the XS 055 fool you! For such a compact crane, it delivers an all-round performance that will exceed your expectations. For example, with 4 hydraulic extensions, the 055 can reach out to a distance of 11.4 metres. And, close in, the 055 is just as impressive. Thanks to its computer-optimised geometry, the operator is able to handle materials safely, efficiently and productively within the tightest of working areas.

The HIAB XS 055 is available with the standard 'no links' boom configuration – one or two hydraulic extensions, or with an outer boom link, with up to four extensions. All models can also be configured with a shorter outer boom – the "S" version. You can furthermore tailor the crane for its application by selecting control and safety systems from some of the most advanced technologies available.

### The benefits at a glance

- New **Valve 80** delivers extra lifting capacity and improved efficiency
- Standard 'no link' boom system or outer boom link
- Choice of CL, Duo and HiDuo models with BOSS, **SPACE 3000** or **SPACE 4000** safety systems
- Tiltable stabilizers as standard provide maximum ground clearance
- Cross controls minimise the risk of human error by incorporating the same control lever sequence on both sides
- **HiDrive** – radio remote control, optional

### There's no better investment

HIAB XS cranes are designed to provide a rapid return on your initial investment. We build-in a host of innovative features to keep your operating and maintenance costs to an absolute minimum. Hoses, pipes, control valve and electronic boxes are well protected and concealed behind moulded covers. Oversized slide pads give longer service life. **It all adds up to outstanding value for money.**

Contact your local Hiab dealer