

Grove Maniowoc National Crane Potain



Maniowoc 16000

Product Guide

ASME B30.5

Imperial



Features

- 440 USt capacity
- 18,800 ft-kips maximum load moment
- 36,405 ft-kips maximum load moment with MAX-ER®
- 315 ft No. 58 HL boom
- 346.5 ft No. 133A fixed jib on No. 58 HL boom combination
- 453 ft No. 59 luffing jib on No. 58 HL boom combination
- 500 HP engine



Features

EPIC®

Manitowoc's field-proven Electronically Processed Independent Controls (EPIC) system with CAN-BUS technology delivers high productivity and precise load control by instantly matching a crane's commands to the crane function. EPIC maximizes a Manitowoc crane's function capability and simplifies servicing by pinpointing any problem in the crane's engine, power transmission and other operating systems. In addition, EPIC increases versatility by easily tailoring a Manitowoc crane's operation for specialized applications, with or without attachments.



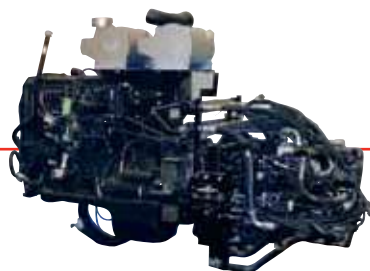
FACT™ Connectors

Manitowoc's Fast Aligning Connection Technology (FACT) precisely and accurately aligns crane components for safe, fast, easy assembly.



CraneSTAR

CraneSTAR is an exclusive and innovative crane asset management system that helps improve your profitability and reduce costs by remotely monitoring critical crane data. Visit www.cranestar.com for more information.



Hydraulics

Our closed-loop system provides a separate hydraulic circuit to power each crane function. The result is truly independent, variable-speed operation of the swing, load hoist, boom hoist and travel functions.

Contents

Specifications	4
Outline dimensions	7
Transport data	15
Crane assembly	16
Performance data	19
Boom combinations	24
Heavy lift boom range / load charts	27
Upper boom point range / load charts	29
Wind Attachment range / load charts	31
Fixed jib range / load charts	35
Luffing jib range / load charts	38
MAX-ER® complete information	42
Manitowoc Crane Care	56

Specifications

Upperworks



Engine

Cummins Model QXS15 – C500 Tier 4i/3b diesel, 500 BHP at 1800 RPM.

Or

Cummins QXS15-C500 Tier 3 diesel, rated 500 HP at 1800 RPM

Includes pump drive disconnect for easier starting, engine block heater (120V), ether starting aid, high silencing muffler, hydraulic oil cooler, radiator and fan.

Multiple hydraulic pump drive transmission provides power for all machine functions.

Two 12 volt, 1400 CCA at 0° F, 24 volt system and 100 amp alternator.

250 gal., with level indicator in operator's cab.

■ Optional: Cold-weather package with heater for fluids, and computer display.



Controls

Modulating electronic-over-hydraulic controls provide infinite speed response directly proportional to control lever movement. Controls include Manitowoc's exclusive EPIC® Electronically Processed Independent Control system with CAN-BUS technology providing microprocessor driven control logic, pump control, on-board diagnostics, and service information.

Block-up limit control is standard for hoist and whip lines.

Integrated Rated Capacity Limiter system (RCL) is standard for main boom and upper boom point. "Function cut-out" or "warning only" operation is selected via a keyed switch on the RCL console.

Travel and swing alarms are standard.

■ Optional: Anemometer (wind speed indicator). Booms and jibs are pre wired for anemometer.



Hydraulic system

High-pressure piston pumps, driven by a multi-pump transmission, provide independent closed-loop

hydraulic power for the hoisting drums, boom hoist, swing, left crawler and right crawler.

190 gal. hydraulic reservoir is equipped with breather, clean out access, and internal diffuser.

Each function is equipped with relief valves to protect the hydraulic circuit from overload or shock.

System includes oil cooler and replaceable, full flow filter. All oil is filtered before entering the hydraulic pumps.



Drums

Basic machine is equipped with 42-3/4" wide and 25-1/4" diameter main hoist drum, mounted in the boom butt, and 32-3/8" wide and 25-1/4" diameter whip drum, mounted in the rotating bed. Each drum is driven by a variable-displacement hydraulic motor through a planetary reduction system. Drums are grooved for 28 mm rope.

Powered hoisting/lowering operation is standard with automatic (spring applied, hydraulically released) multi-disc brakes, and drum rotation indicators.

■ Optional: Auxiliary (third) hydraulic powered drum rated 33,000 lb line pull mounted in boom butt.



Swing system

High strength steel adapter module is mounted on 118" diameter triple row roller turntable bearing. Bearing adapter-mounted independent swing is powered by a fixed-displacement hydraulic motor coupled to an internal brake and planetary reduction.

Swing system maximum speed: 2.2 rpm.



Moving mast hoist system

Independent moving mast hoist with two grooved drums, each 12-13/16" wide and 25-1/4" diameter drum grooved for 1-1/8" diameter wire rope.

Drum is powered by variable-displacement hydraulic motors coupled to integral brake and planetary reduction gearboxes. Ratcheting pawl and rotation indicator are standard.

Raise 315' full main boom from 0° - 82° in 3 minutes, 48 seconds.



Specifications



Boom support system

Moving Mast is 32' long and connects the boom hoist reeving to the steel boom suspension strap rigging. When used with the optional self-erect package, the mast is used for crane assembly and disassembly. It is capable of lifting and positioning the crawler assemblies, stacking the counterweights, and assembling the boom and luffing jib.

Spring cushioned boom stop and automatic boom stop are standard.



Counterweight

Counterweight tray and counterweights for the upperworks attaches to the rotating bed with power actuated pins. Carbody counterweight connect to the carbody via high strength steel hooks integral with the carbody structure.

QTY.	ITEM	UNIT WEIGHT	TOTAL WEIGHT
		lb	lb
10	Upperworks Upper Side Box	18,000	180,000
1	Counterweight Tray	44,000	44,000
Series 1 Total			224,000
4	Upperworks Upper Side Box	18,000	72,000
2	Carbody Center Box	30,000	60,000
Series 2 Total			356,000
2	Upperworks Upper Side Box	18,000	36,000
4	Carbody Side Box	15,000	60,000
Series 3 Total			452,000



Vision operator's cab

The Vision Cab™ is a fully enclosed and insulated galvanized steel module mounted to the left front corner of rotating bed. Module is equipped with power tilt, sliding door, large safety glass windows, front and roof windshield wipers, dome light, sun visor and shade, fire extinguisher, air conditioning, swing and travel alarms, and radio/CD player. Operator's station swings over front of rotating bed for transportation.

Optional: Nylon protective window covers.

Lowerworks



Carbody

Connects rotating bed to crawler assemblies. High strength fabricated steel assembly with FACT™ connection system for safe, fast installation and removal of crawler assemblies.



Crawlers

Crawler assemblies are 34' 2" long with 60" wide cast steel crawler pads and automatically lubricated intermediate rollers. Each crawler is identical and can be mounted on either side of the carbody. Each crawler is powered independently by a variable displacement hydraulic motor and includes hydraulically powered pin actuators for fast installation and removal from carbody. Carbody mounted drive motors are connected to crawler final reduction via drive shaft with guard. Crawlers provide ample tractive effort for counter rotation with full rated load.

Maximum ground speed of 0.77 mph.

Attachments



No. 58 heavy-lift boom

The liftcrane is equipped with 98' No. 58 basic boom consisting of 26' 3" butt, 39' 5" insert with luffing hoist sheaves, 16' 5" transition insert, and 16' 5" top with thirteen 30" diameter tapered roller bearing sheaves. Includes rope guides, boom hoist wire rope, boom angle indicator and hook and weight ball. The boom utilize Manitowoc's exclusive FACT™ connection system boom connector. Spring cushioned boom stop. Automatic boom stop. Powered boom hinge system including cylinder, piping, operating controls, and locking device standard.

Optional: 19' 8" and 39' 5" No. 58 boom inserts with steel boom suspension straps.

Optional: No. 58 detachable upper boom point with one 30" diameter tapered roller bearing steel sheave grooved for 28 mm rope with rope guard.

Optional: 107.6 USt detachable extended upper boom point with three 30" diameter tapered roller bearing steel sheave grooved for 28 mm rope with rope guard.



Specifications



No. 133A fixed jib

70' basic No. 133A fixed jib including pin connected 30' butt, 40' top, 21' strut and mounting hardware.

■ Optional: 10', 20' and 40' No. 133A inserts with pin connectors.

Utilize fixed jib inserts in combination with the No. 133A fixed jib length of 140'.



No. 59 luffing jib

78' basic No. 59 luffing jib including PIN connected 23' butt, (1) 19' 8" inserts and 36' top, basic pendants, fixed strut, jib strut, backstay pendants, boom point guide wheel, luffing jib hoist with ratchet and pawl; quick disconnect for jib hoist piping, and 1" luffing jib hoist line (luffing jib preparation is standard).

■ Optional: 19' 8" and 39' 5" No. 59 luffing jib inserts with steel boom suspension straps.

Utilize luffing jib inserts in combination with the No. 59 basic luffing jib for total luffing jib lengths up to 275'.



The Wheeled MAX-ER®

The Wheeled MAX-ER® attachment components include:

30 m of No. 59A mast consisting of a 19.7' butt, 19.7' insert, 39.4' insert and 19.7 top.

One additional swing drive (for a total of two) mounted on the rotating module. Each swing drive is powered by a fixed-displacement hydraulic motor coupled to a planetary reduction gearbox and internal brake.

Two 39' 5" heavy No. 58 boom inserts.

Counterweight includes (8) 44,000 lb and (2) 30,000 lb boxes.

The wheeled MAX-ER® counterweight can be positioned 36.1', 42.7', or 49.2' behind the crane's centerline of rotation, utilizing structural stinger equipped with hydraulic cylinder.



The Hanging MAX-ER®

The Hanging MAX-ER® attachment components include:

30 m of No. 59A mast consisting of a 19.7' butt, 19.7' insert, 39.4' insert and 19.7' top.

One additional swing drive (for a total of two) mounted on the rotating module. Each swing drive is powered by a fixed-displacement hydraulic motor coupled to a planetary reduction gearbox and internal brake.

Two 39' 5" heavy No. 58 boom inserts.

The hanging MAX-ER® counterweight assembly attaches to the top of the mast by steel straps and to the rear of the upperworks by a beam assembly.

Counterweight includes (10) 44,000 lb and (2) 15,000 lb boxes.

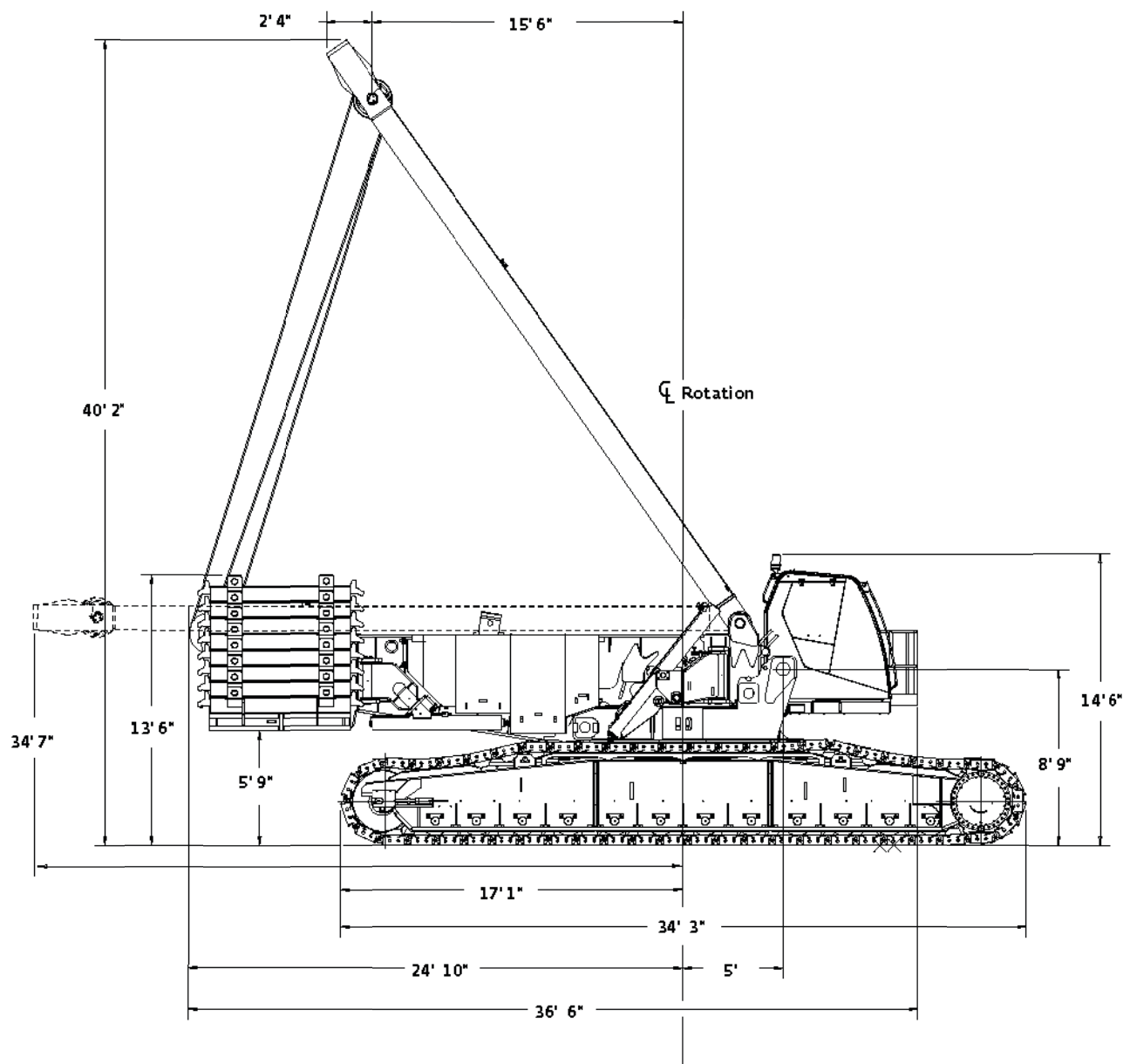
The hanging MAX-ER® counterweight can be positioned 36.1', 42.7', or 49.2' behind the crane's centerline of rotation.

Optional equipment

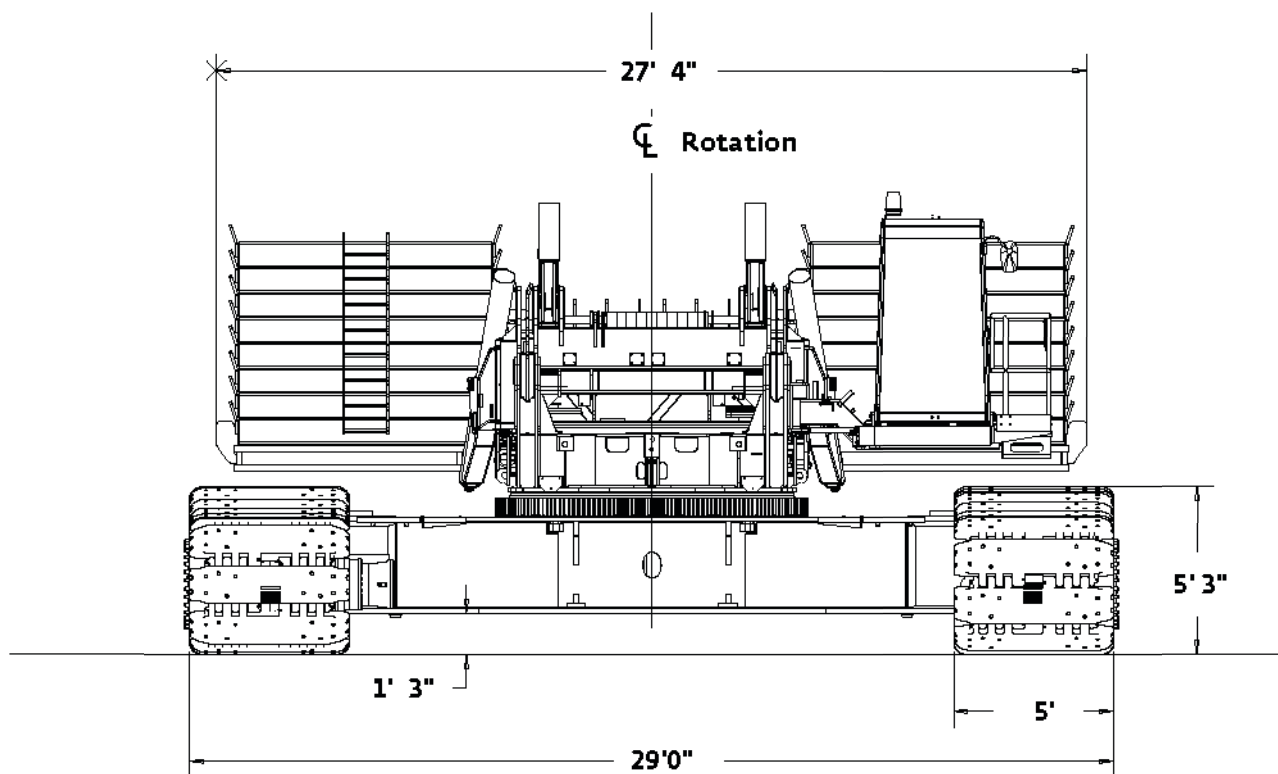
- 20 USt swivel hook and weight ball. Single line pull is 30,000 lb.
- Self-erect system includes, jacking cylinders with pads, 45 USt assembly block and crawler handling chains.
- Hydraulic Test Kit: required to properly analyze the performance of the EPIC® control system.
- Service Interval Kits for the regularly scheduled maintenance of general crane operations.
- Special Paint color(s) other than Manitowoc standard red and black.
- Custom vinyl decal(s) of customer name and/or logo from artwork supplied by customer.
- Export Packaging: basic crane, boom and jib sections.
- Additional load blocks available upon request.



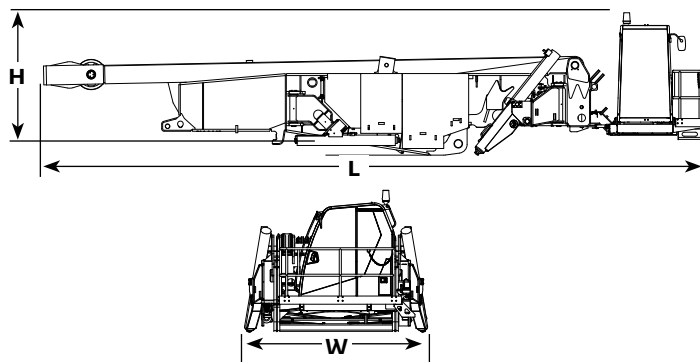
Outline dimensions



Outline dimensions

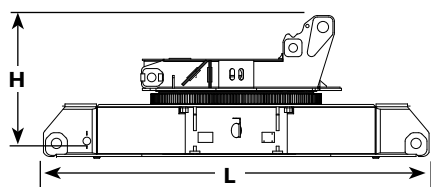


Outline dimensions



Rotating bed assembly

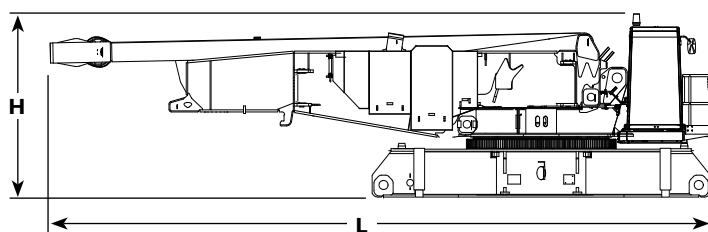
Length	43' 6"
Width	10' 6"
Height	9' 5"
Weight	87,330 lb



Carbody assembly

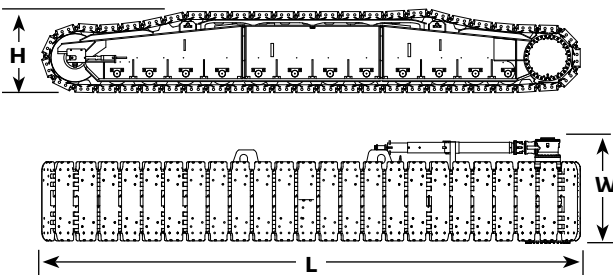
Length	22' 3"
Width	9' 10"
Height	8' 3"
Weight	62,085 lb

Note: Weight includes rotating bed adapter frame with bearing turntable, four swing drives, and carbody.



Rotating bed and carbody assembly (decked version)

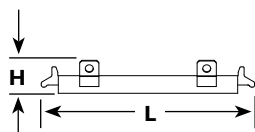
Length	22' 3"
Width	9' 10"
Height	10' 6"
Weight	143,260 lb



Crawlers

Length	34' 3"
Width	6' 8"
Height	5' 3"
Weight	72,015 lb

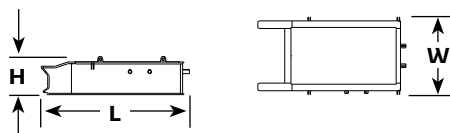
Outline dimensions



Upper counterweight

Series 1	x 10
Series 2	x 14
Series 3	x 16

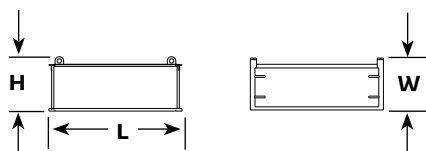
Length	8' 4"
Width	8' 7"
Height	1' 4"
Weight	18,000 lb



Carbody center counterweight

Series 2	x 2
Series 3	x 2

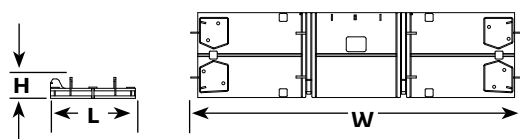
Length	11' 4"
Width	5' 11"
Height	2' 11"
Weight	30,000 lb



Carbody side counterweight

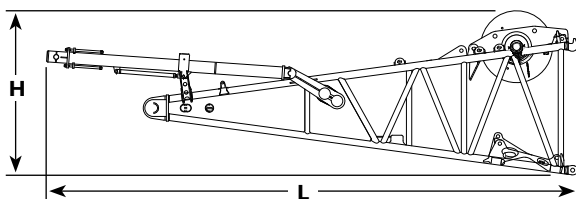
Series 3	x 4
-----------------	------------

Length	7' 2"
Width	2' 10"
Height	2' 11"
Weight	15,000 lb



Upper counterweight tray

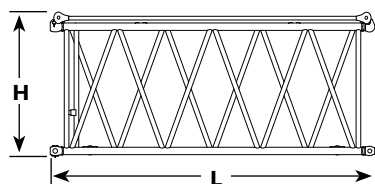
Length	7' 0"
Width	27' 4"
Height	1' 9"
Weight	44,000 lb



No. 58 Boom butt, drum 1, luffing drum, wire rope

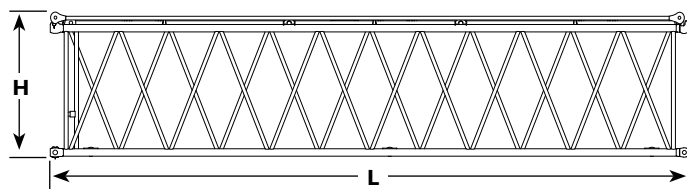
Length	33' 3"
Width	9' 9"
Height	10' 2"
Weight	47,640 lb

Outline dimensions



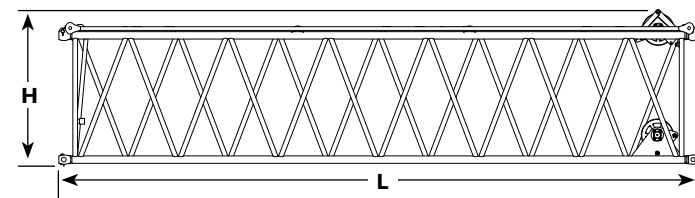
19' 8" No. 58 boom insert and straps

Length	20' 3"
Width	9' 9"
Height	8' 9"
Weight	5,650 lb



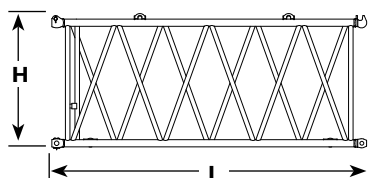
39' 5" No. 58 boom insert and straps

Length	40' 0"
Width	9' 9"
Height	8' 8"
Weight	9,340 lb



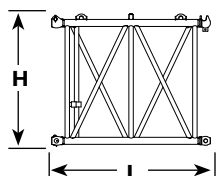
39' 5" No. 58 heavy boom insert with sheave

Length	40' 0"
Width	9' 9"
Height	8' 9"
Weight	12,335 lb



19' 8" No. 58 WA boom insert and straps

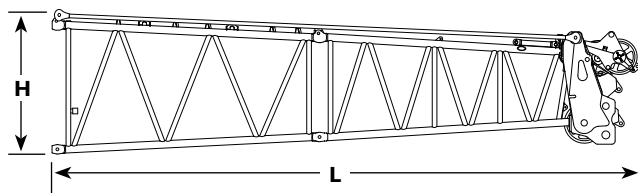
Length	20' 4"
Width	9' 9"
Height	8' 9"
Weight	5,930 lb



9' 10" No. 58 WA boom insert and straps

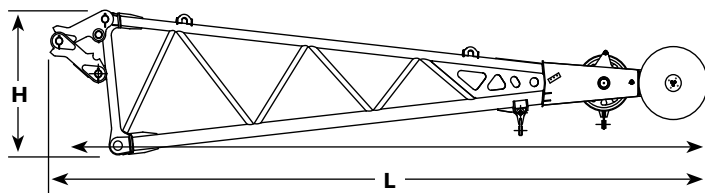
Length	10' 6"
Width	9' 9"
Height	8' 9"
Weight	3,525 lb

Outline dimensions



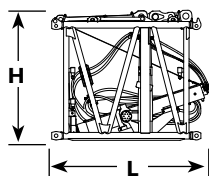
16' 5" No. 58 boom top with 16' 5" transitional insert and straps

Length	37' 5"
Width	9' 9"
Height	8' 9"
Weight	25,075 lb



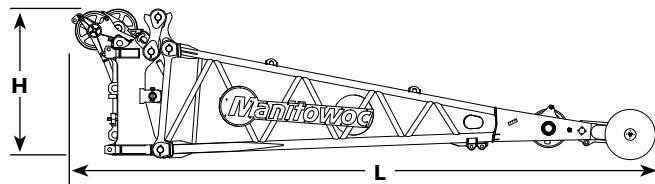
23' 0" No. 58 extended upper boom point

Length	31' 3"
Width	8' 6"
Height	6' 6"
Weight	8,100 lb



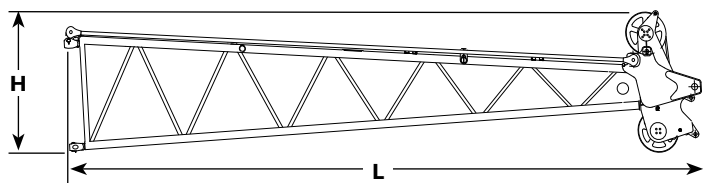
9' 8" No. 58 boom insert with BRS cylinder and straps

Length	11' 1"
Width	9' 9"
Height	9' 1"
Weight	12,000 lb



No. 58 WA boom cap and No. 58 WA extended upper boom point

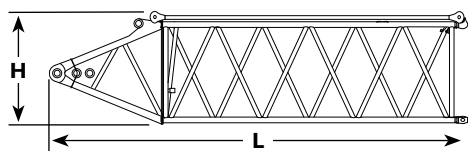
Length	37' 9"
Width	8' 10"
Height	9' 9"
Weight	18,780 lb



36' 1" No. 59 luffing jib top

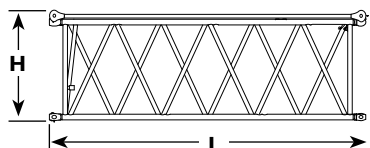
Length	39' 2"
Width	8' 10"
Height	8' 4"
Weight	13,260 lb

Outline dimensions



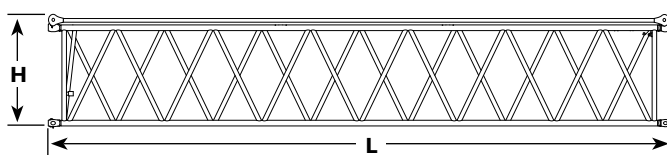
23' 0" No. 59 luffing jib butt

Length	23' 6"
Width	8' 10"
Height	7' 1"
Weight	6,000 lb



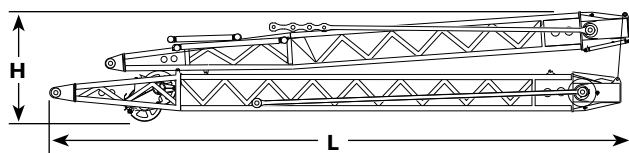
19' 8" No. 59 luffing jib insert

Length	20' 3"
Width	8' 10"
Height	7' 1"
Weight	3,715 lb



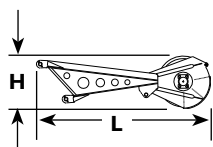
39' 5" No. 59 luffing jib insert

Length	40' 0"
Width	9' 9"
Height	7' 1"
Weight	6,455 lb



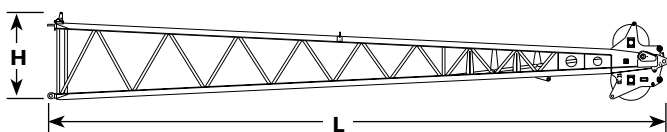
37' 9" No. 59 luffing jib strut with point sheaves and straps

Length	40' 11"
Width	8' 10"
Height	7' 5"
Weight	20,475 lb



37' 9" No. 59 luffing jib upper point roller assembly

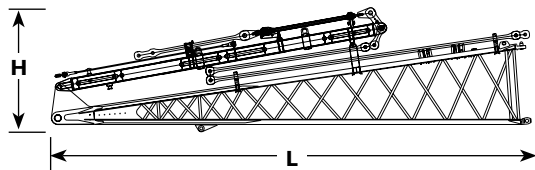
Length	8' 8"
Width	1' 4"
Height	2' 8"
Weight	1,014 lb



40' No. 133A fixed jib top

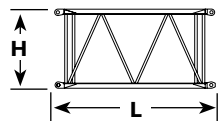
Length	42' 10"
Width	6' 10"
Height	5' 5"
Weight	8,045 lb

Outline dimensions



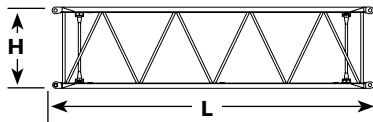
30' No. 133A fixed jib butt with struts

Length	30' 9"
Width	6' 10"
Height	7' 11"
Weight	10,157 lb



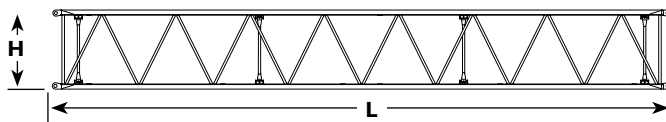
10' No. 133A fixed jib insert

Length	10' 5"
Width	6' 10"
Height	5' 5"
Weight	1,235 lb



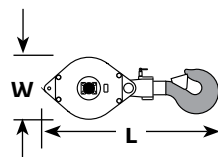
20' No. 133A fixed jib insert

Length	20' 5"
Width	6' 10"
Height	5' 5"
Weight	2,120 lb



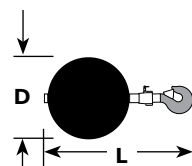
40' No. 133A fixed jib insert

Length	40' 5"
Width	6' 10"
Height	5' 5"
Weight	3,780 lb



Hook block for 1-1/8" wire rope

Capacity	450 t	Length	11' 1"
Weight	21,300 lb	Width	3' 11"
Capacity	350 t	Length	8' 8"
Weight	17,400 lb	Width	3' 9"
Capacity	250 t	Length	8' 11"
Weight	11,590 lb	Width	3' 0"
Capacity	200 t	Length	8' 8"
Weight	9,500 lb	Width	2' 10"
Capacity	110 t	Length	7' 6"
Weight	7,500 lb	Width	2' 10"
Capacity	45 t*	Length	6' 3"
Weight	2,600 lb	Width	3' 0"
*Assembly block			



Weight ball

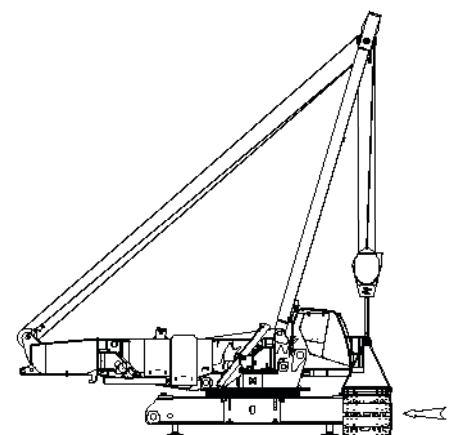
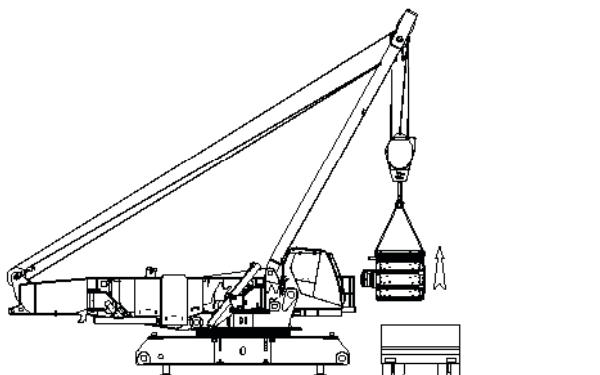
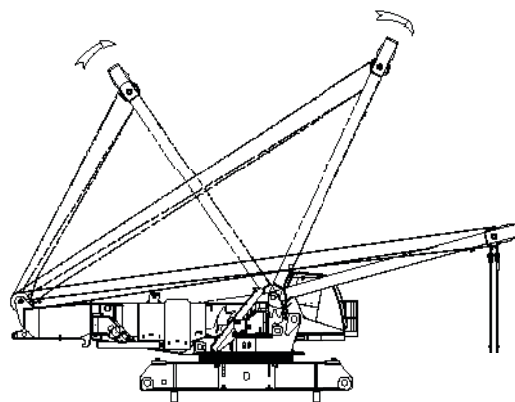
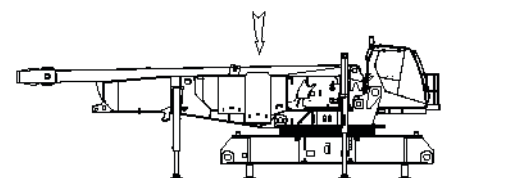
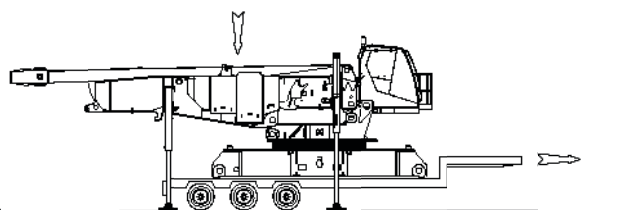
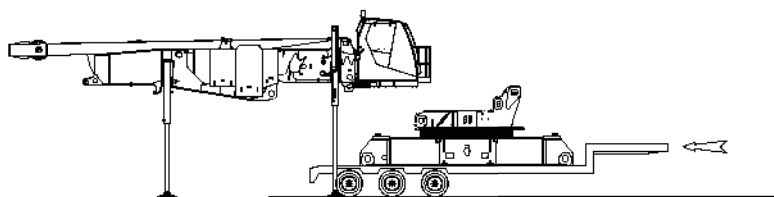
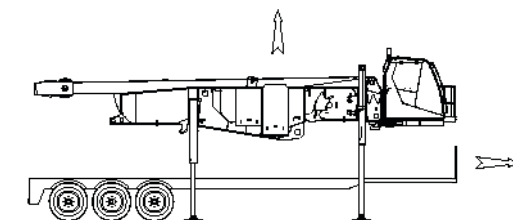
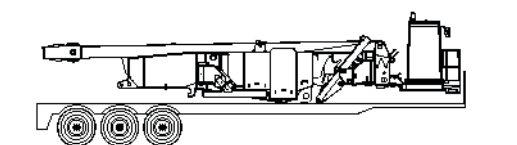
Capacity/Swivel	20 t	Diameter	1' 7"
Weight	1,700 lb	Length	4' 0"

Transport data

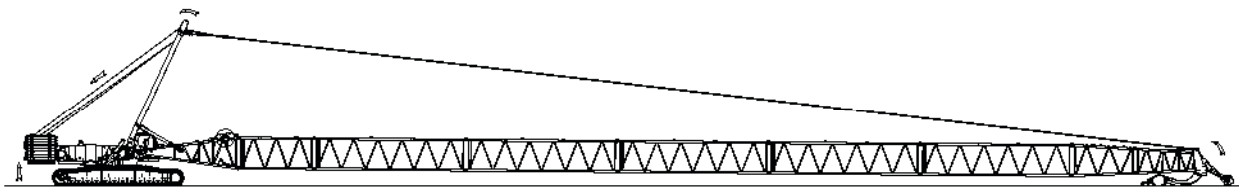
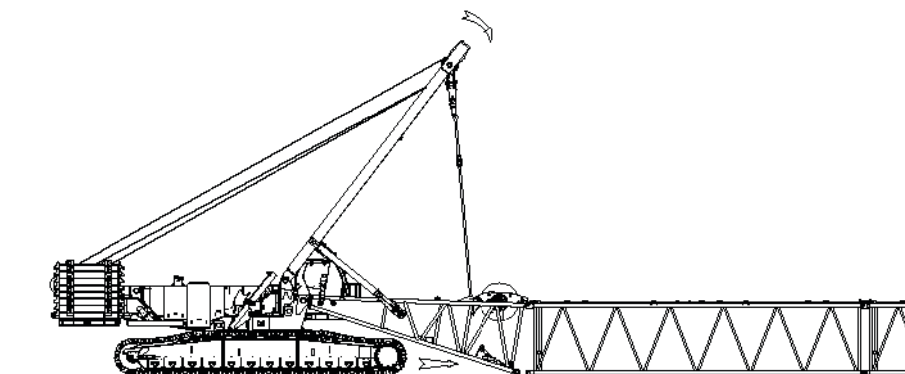
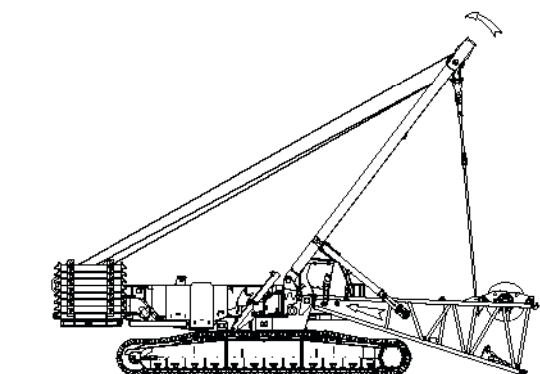
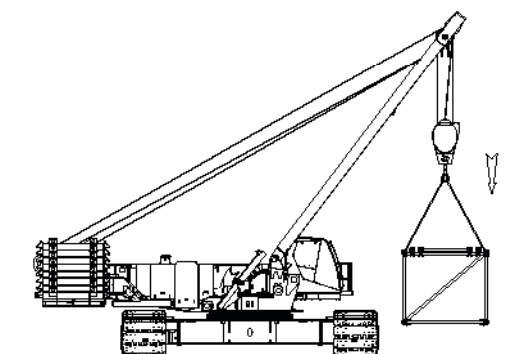
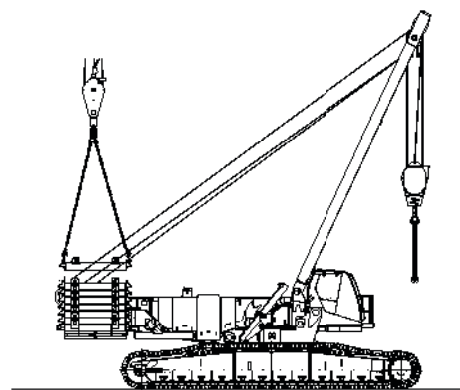
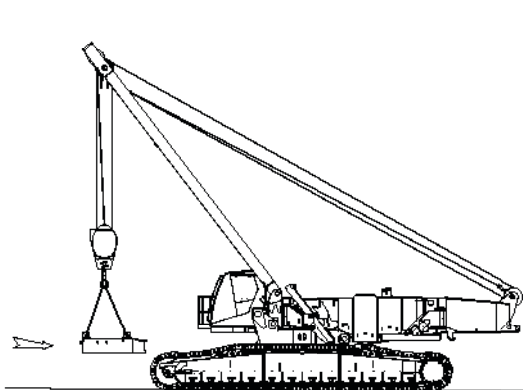
Load summary																						
Item	351 ft No. 58WA boom with BRS + 23 ft No. 58 extended upper boom point Quantity on trailer load # (Does not include blocking, strapping, etc.)																					
	Weight each item lb	1	2	3	4	5	6	7	8	9	10	11	12	13	14	15	16	17	18	19	20	21
Upperworks module	87,330	1																				
Carbody and adapter	62,085		1																			
Crawler assembly	72,015			1	1																	
Counterweight tray	44,000																	1				1
Upper counterweight (box)	18,000					1		1	1	2	1	2	1	1	2	1	2					
Carbody center counterweight	30,000																		1	1		
Carbody side counterweight	15,000							1	1										1	1		
Auxiliary counterweight tray	6,400																					1
Auxiliary counterweight (box)	17,500																				1	
26.2 ft No. 58 boom butt, drum 1 w/ wire rope	47,640						1															
16 ft 5 in No. 58 boom top and straps	20,215					1																
16 ft 5 in No. 58 boom trans. insert and straps	4,860					1																
19 ft 8 in No. 58 boom insert and straps	5,650														1							
39 ft 5 in No. 58 boom with WRG Boom insert and straps	12,335							1														
39 ft 5 in No. 58 boom insert and straps	9,340								1	1	1	1	1	1								
9.8 ft No. 58 boom insert with BRS cylinder and straps	12,000																				1	
BRS A-frame and intermediate suspension	1,500																					1
No. 58WA boom cap and No. 58 WA extended upper boom point	8,100															1						
200 USt 5 sheave load block	9,500										1											
110 USt 3 sheave load block	7,500													1								
Reel cable - 2,300 ft	8,000												1									
Miscellaneous	2,000																1					
Payload for each trailer lb		87,330	62,085	72,015	72,015	43,075	47,640	45,335	42,340	45,340	36,840	45,340	35,340	34,840	41,645	36,780	40,600	44,000	45,000	45,000	29,500	43,400



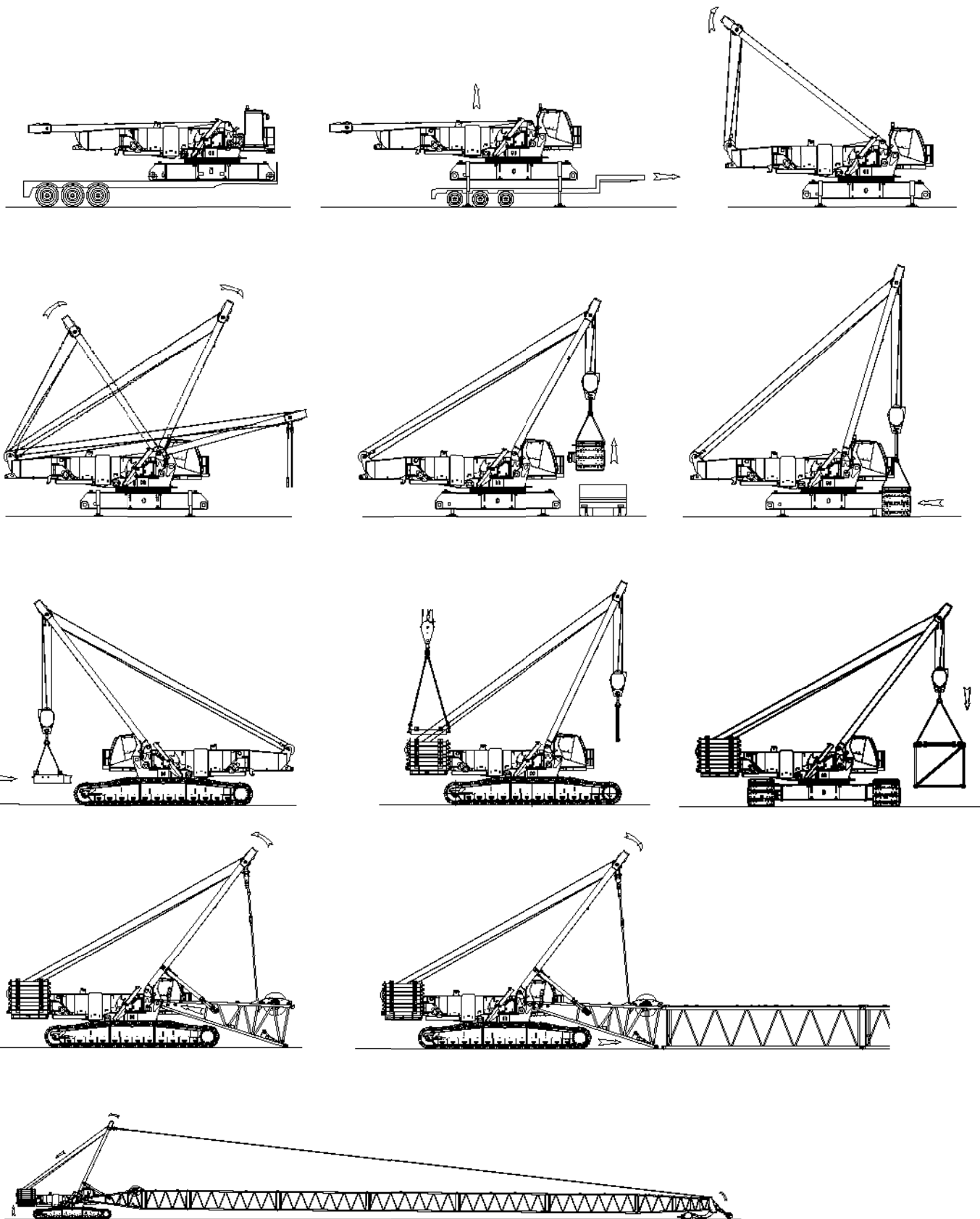
Crane assembly - undecked



Crane assembly - undecked



Crane assembly - decked



Performance data

Main hoist 28 mm wire rope Single line speed in ft per minute

Single line pull lb	Layer										
	1 13.2"	2 14.3"	3 15.4"	4 16.5"	5 17.6"	6 18.7"	7 19.8"	8 20.9"	9 22.0"	10 23.1"	11 24.2"
0	345	374	403	432	460	489	518	547	576	605	634
5,000	345	374	403	432	460	489	518	547	576	605	634
10,000	345	374	403	430	456	481	506	530	554	577	601
15,000	337	361	385	408	430	442	446	450	453	457	461
20,000	322	332	336	340	344	348	352	355	359	363	367
25,000	272	276	280	284	287	291	295	299	303	307	311
30,000	234	238	242	246	250	254	257	261	265	269	273
35,800	204	208	212	215	219	223	227	231	235	239	242

Whip drum 28 mm wire rope Single line speed in ft per minute

Single line pull lb	Layer						
	1 13.2"	2 14.3"	3 15.4"	4 16.5"	5 17.6"	6 18.7"	7 19.8"
0	278	301	324	347	370	394	417
5,000	262	283	303	323	343	363	382
10,000	247	265	282	299	316	330	333
15,000	222	225	228	230	233	236	239
20,000	175	178	181	183	186	189	192
25,000	147	149	152	155	158	161	164
30,000	128	131	133	136	139	142	145

Performance data

Optional high speed whip 28 mm wire rope single line speed in ft per minute

Single line pull lb	Layer						
	1 13.2"	2 14.3"	3 15.4"	4 16.5"	5 17.6"	6 18.7"	7 19.8"
0	345	374	403	432	460	489	518
5,000	345	374	403	432	460	489	518
10,000	345	374	403	430	456	481	506
15,000	337	361	385	408	430	442	446
20,000	322	332	336	340	344	348	352
25,000	272	276	280	284	287	291	295
30,000	234	238	242	246	250	254	(257)

No. 58 HL boom 28 mm hoist line

Boom length ft	Whip line - drum 2 or 3		Hoist line - drum 1	
	1 Part	2 Part		Maximum parts of line for full hoisting range
	ft	ft	ft	
98.4	260	380	2750	26
118.1	300	440	2800	22
137.8	340	500	2800	18
157.5	380	560	3050	18
177.2	420	610	3050	14
196.9	460	670	3050	14
216.5	500	730	3050	12
236.2	540	790	3050	10
255.9	580	850	3050	10
275.6	620	910	3050	8
295.3	660	970	3050	6
315.0	700	1030	3050	6

No. 58 HL boom Main load block reeving 28 mm wire rope

No. parts of line	Maximum load lb
2	71,700
4	143,500
6	215,200
8	287,000
10	358,800
12	430,500
14	502,300
16	574,000
18	645,800
20	711,400
22	775,000
24	837,400
26	881,900

NOTE: Hoist and whip line lengths given in table will allow hook to touch ground. When block travel below ground is required, add additional rope equal to parts of line times added travel distance. Hoisting distance or line pull may be limited when block travel below ground is required.



Performance data

No. 58 HL boom with 23 ft extended upper boom point 28 mm wire rope

Boom length ft	Whip line drum 2 or 3 1 Part ft	Hoist line drum 1	
		ft	Total parts of line
216.5	550	1750	6
236.2	590	1900	6
255.9	630	2000	6
275.6	670	2150	6
295.3	710	2300	6

NOTE: Hoist and whip line lengths given in table will allow hook to touch ground. When block travel below ground is required, add additional rope equal to parts of line times added travel distance. Hoisting distance or line pull may be limited when block travel below ground is required.

No. 58 HL boom with 23 ft extended upper boom point Main load block reeving 28 mm wire rope

No. parts of line	Maximum load lb
2	71,700
4	143,500
6	215,200

No. 58 HL boom with 23 ft extended upper boom point and 98.4 ft No. 59A mast 28 mm wire rope

Boom length ft	Whip line drum 2 or 3 1 Part ft	Hoist line drum 1	
		ft	Total parts of line
315.0	750	2450	6

NOTE: Hoist and whip line lengths given in table will allow hook to touch ground. When block travel below ground is required, add additional rope equal to parts of line times added travel distance. Hoisting distance or line pull may be limited when block travel below ground is required.

No. 58 HL boom with 23 ft extended upper boom point and No. 59A 98.4 ft mast 28 mm wire rope

No. parts of line	Maximum load lb
2	71,700
4	143,500
6	179,800

No. 58 WA boom with 25 ft extended upper boom point 28 mm wire rope

Boom length ft	Whip line - drum 2 or 3		Hoist line - drum 1	
	1 Part ft	2 Part ft	ft	Total parts of line
213.3	600	800	2250	8
223.1	600	850	2300	8
232.9	600	900	2400	8
242.8	650	900	2500	8
252.6	650	950	2600	8
262.5	650	950	2650	8
272.3	700	1000	2750	8
282.2	700	1050	2850	8
292.0	750	1050	2950	8
301.8	-	-	3000	8

No. 58 WA boom with 25 ft extended upper boom point Main load block reeving 28 mm wire rope

No. parts of line	Maximum load lb
2	71,700
4	143,500
6	215,200
8	296,600



Performance data

**No. 59 luffing jib on No. 58 HL boom
28 mm hoist line**

Boom length ft	Hoist line drum 1 ft	Whip line drum 2	
		1 Part ft	2 Part ft
98.4	2450	800	1200
118.1	2650	850	1250
137.8	2650	900	1300
157.5	2700	950	1400
177.2	2700	1000	1450
196.9	2700	1000	1450
216.5	2700	1000	1450

**No. 59 luffing jib on No. 58 HL boom
Main load block reeving
28 mm hoist line**

No. parts of line	Maximum load lb
2	71,700
4	143,500
6	215,200
8	287,000
10	358,800
12	408,500

NOTE: Hoist line lengths given in table include all luffing jib lengths. Hoist and whip line lengths given in table will allow hook to touch ground. When block travel below ground is required, add additional rope equal to parts of line times added travel distance. Hoisting distance or line pull may be limited when block travel below ground is required.

**No. 133A fixed jib on No. 58 HL boom
28 mm hoist line**

ft	Hoist line drum 1 ft	Hoist line drum 2 ft
137.8	1750	1550
157.5	1850	1550
177.2	2000	1550
196.9	2150	1550
216.5	2200	1550
236.2	2300	1550

**No. 133A luffing jib on No. 58 HL boom
Main load block reeving
28 mm hoist line**

No. parts of line	Maximum load lb
2	71,700
4	143,500
6	205,700

NOTE: Hoist line lengths given in table include all luffing jib lengths. Hoist and whip line lengths given in table will allow hook to touch ground. When block travel below ground is required, add additional rope equal to parts of line times added travel distance. Hoisting distance or line pull may be limited when block travel below ground is required.



Performance data

**MAX-ER
No. 58 HL boom
28 mm wire rope**

Boom length ft	Whip line - drum 2 or 3		Hoist line - drum 1	
	1 Part ft	2 Part ft	ft	Total parts of line
137.8	350	500	3550	24
157.5	390	560	3700	22
177.2	430	620	3800	20
196.9	470	680	3800	18
216.5	510	740	3800	16
236.2	550	800	3800	14
255.9	580	860	3900	14
275.6	620	910	3900	12
295.3	660	970	3900	10
315.0	700	1030	3900	8
334.6	740	1090	3900	8
354.3	780	1150	3900	6
374.0	820	1210	3900	6
393.7	860	1270	3900	6

**MAX-ER
No. 58 HL boom
Main load block reeving
28 mm wire rope**

No. parts of line	Maximum load lb
2	71,700
4	143,500
6	215,200
8	287,000
10	358,800
12	430,500
14	502,300
16	574,000
18	645,800
20	711,400
22	775,000
24	837,400

NOTE: Hoist and whip line lengths given in table will allow hook to touch ground. When block travel below ground is required, add additional rope equal to parts of line times added travel distance. Hoisting distance or line pull may be limited when block travel below ground is required.

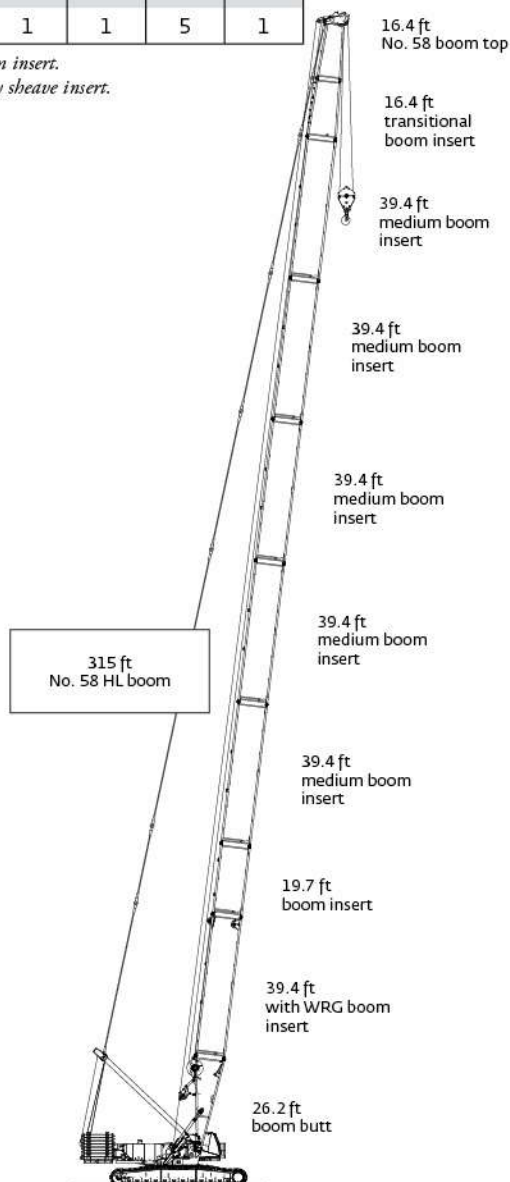
Boom combinations

No. 58 HL boom combinations

Boom length ft	Boom inserts length ft			
	16.4*	19.7	39.4	39.4**
98.4	1	0	0	1
118.1	1	1	0	1
137.8	1	0	1	1
157.5	1	1	1	1
177.2	1	0	2	1
196.9	1	1	2	1
216.5	1	0	3	1
236.2	1	1	3	1
255.9	1	0	4	1
275.6	1	1	4	1
295.3	1	0	5	1
315.0	1	1	5	1

*transition boom insert.

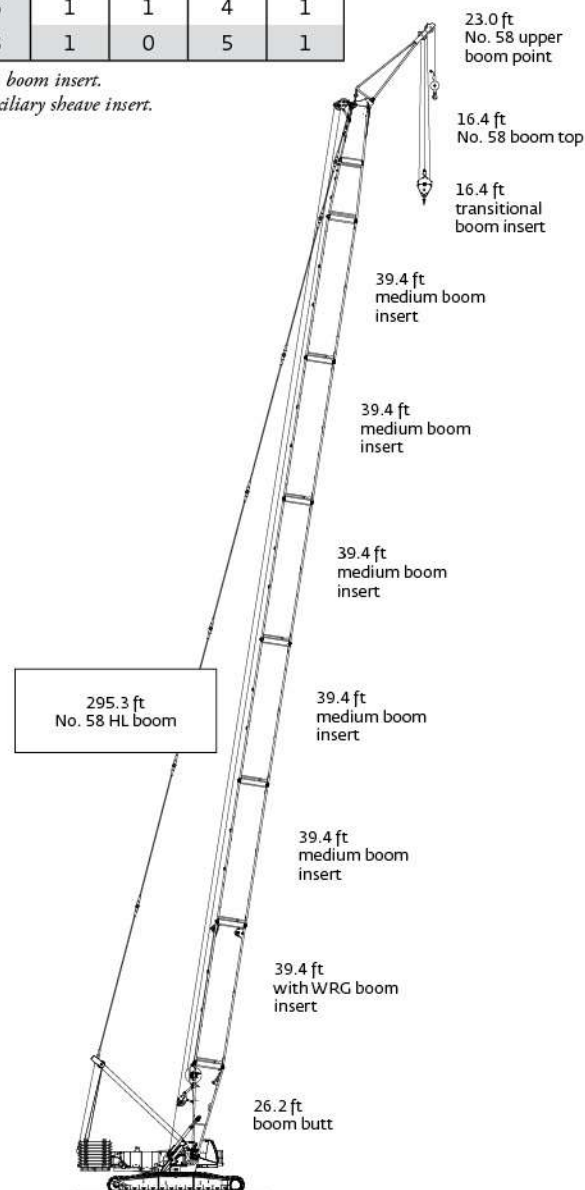
**with auxiliary sheave insert.


No. 58 HL boom with 23 ft extended upper boom point combinations

Boom length ft	Boom inserts length ft			
	16.4*	19.7	39.4	39.4**
98.4	1	0	0	1
118.1	1	1	0	1
137.8	1	0	1	1
157.5	1	1	1	1
177.2	1	0	2	1
196.9	1	1	2	1
216.5	1	0	3	1
236.2	1	1	3	1
255.9	1	0	4	1
275.6	1	1	4	1
295.3	1	0	5	1

*transition boom insert.

**with auxiliary sheave insert.



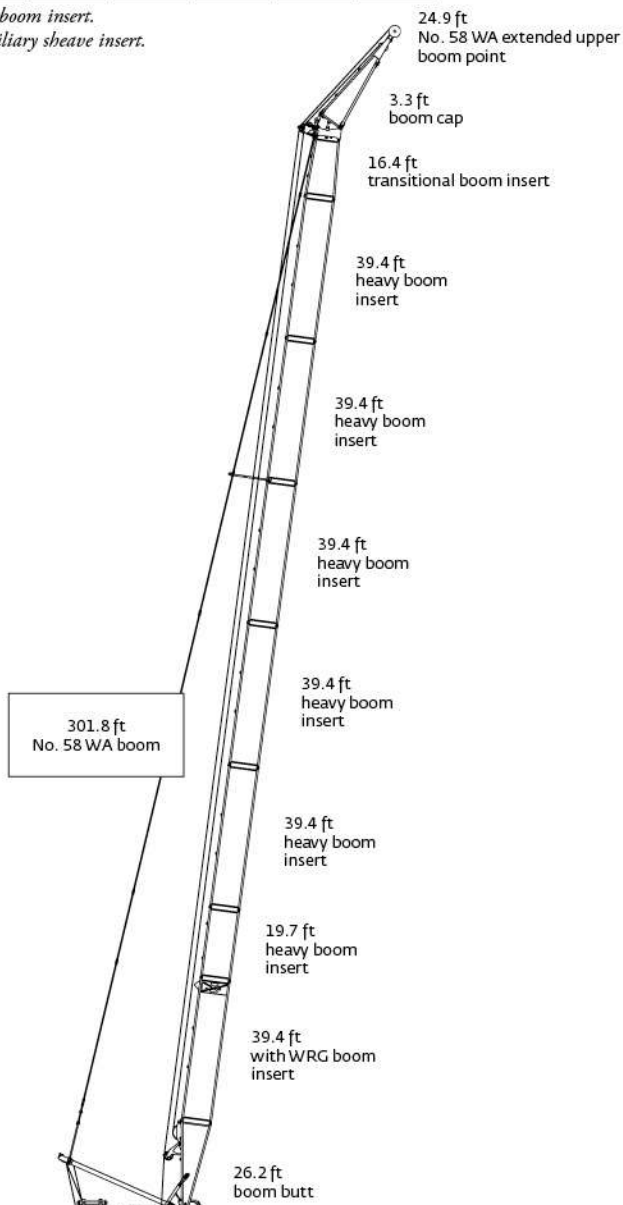
Boom combinations

No. 58 WA boom combinations with 24.9 ft extended upper boom point

Boom length ft	Boom inserts length ft				
	16.4*	19.7	39.4	39.4	39.4**
213.3	1	1	0	3	1
223.1	1	0	1	3	1
232.9	1	1	0	3	1
242.8	1	0	1	4	1
252.6	1	1	0	4	1
262.5	1	0	1	4	1
272.3	1	1	0	4	1
282.2	1	0	1	5	1
292.0	1	1	0	5	1
301.8	1	0	1	5	1

*transition boom insert.

**with auxiliary sheave insert.



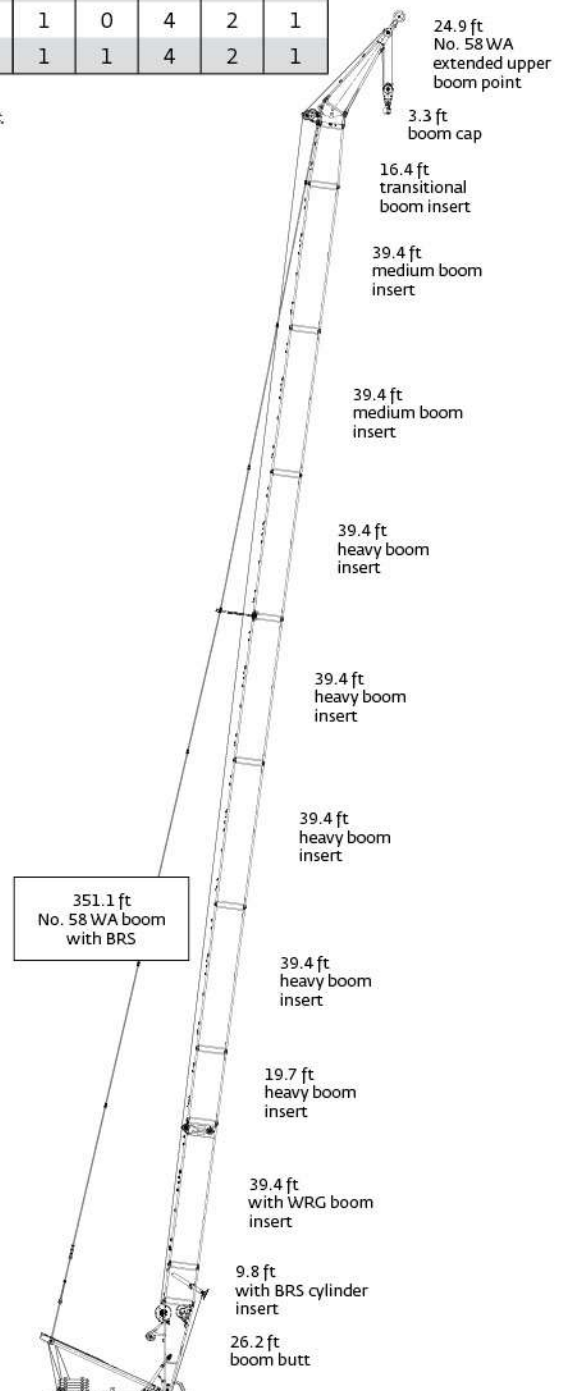
No. 58 WA boom with BRS combinations with 24.9 ft extended upper boom point

Boom length ft	Boom inserts length ft						
	16.4*	9.8	9.8***	19.7	39.4	39.4	39.4**
292	1	0	1	0	5	0	1
301.8	1	1	1	0	5	0	1
311.7	1	0	1	1	5	0	1
321.5	1	1	1	1	5	0	1
331.4	1	0	1	0	5	1	1
341.2	1	1	1	0	4	2	1
351.1	1	0	1	1	4	2	1

*transition boom insert.

**with auxiliary sheave insert.

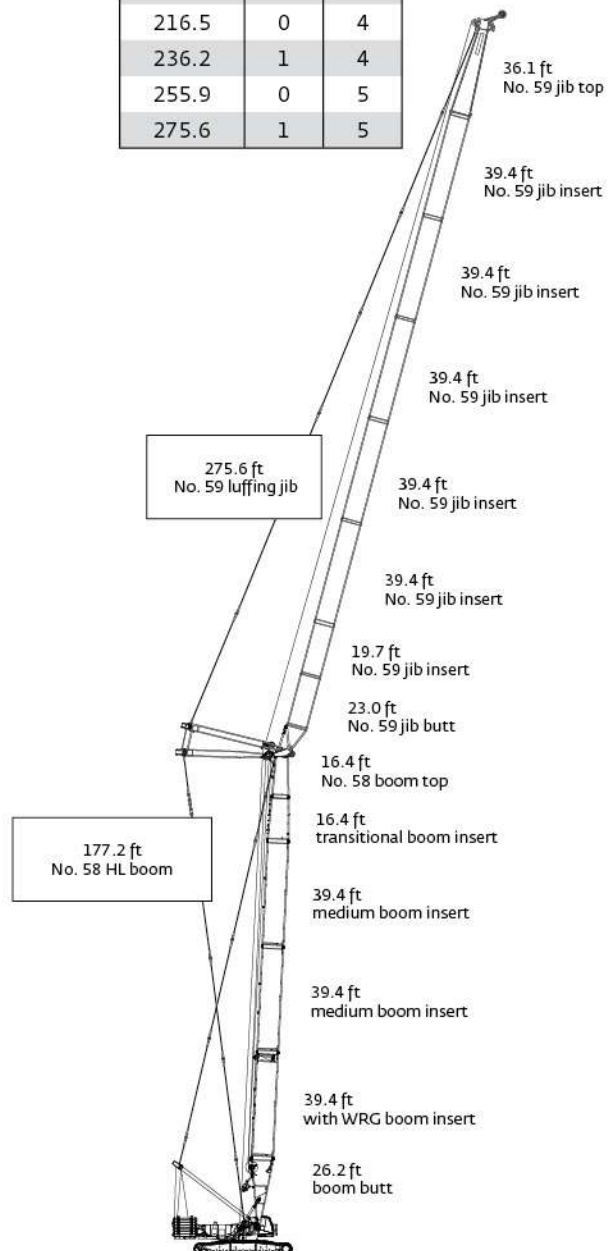
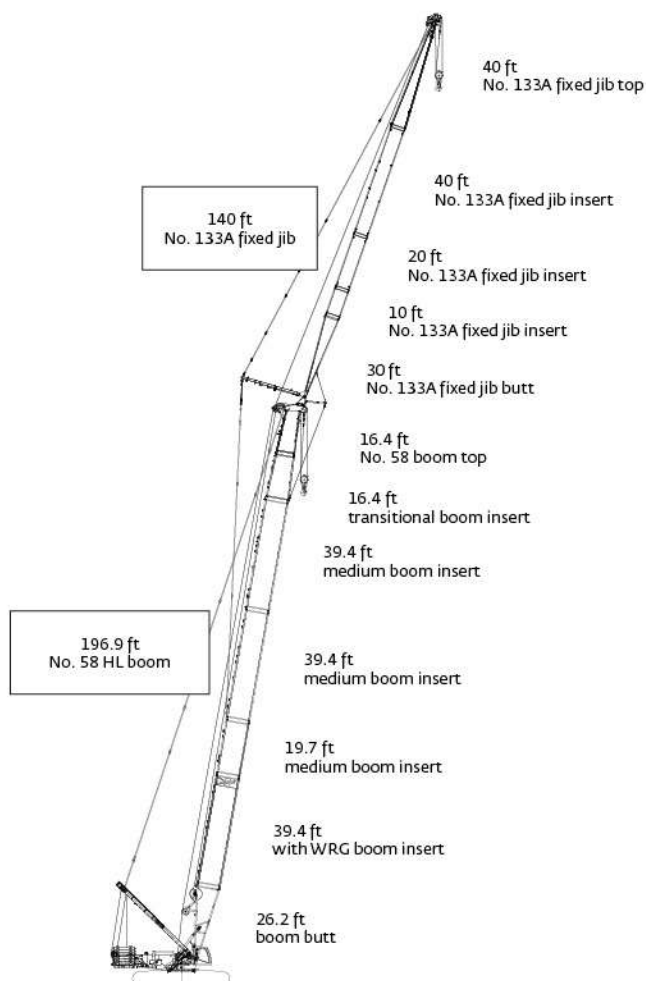
***with BRS cylinder insert.



Boom combinations

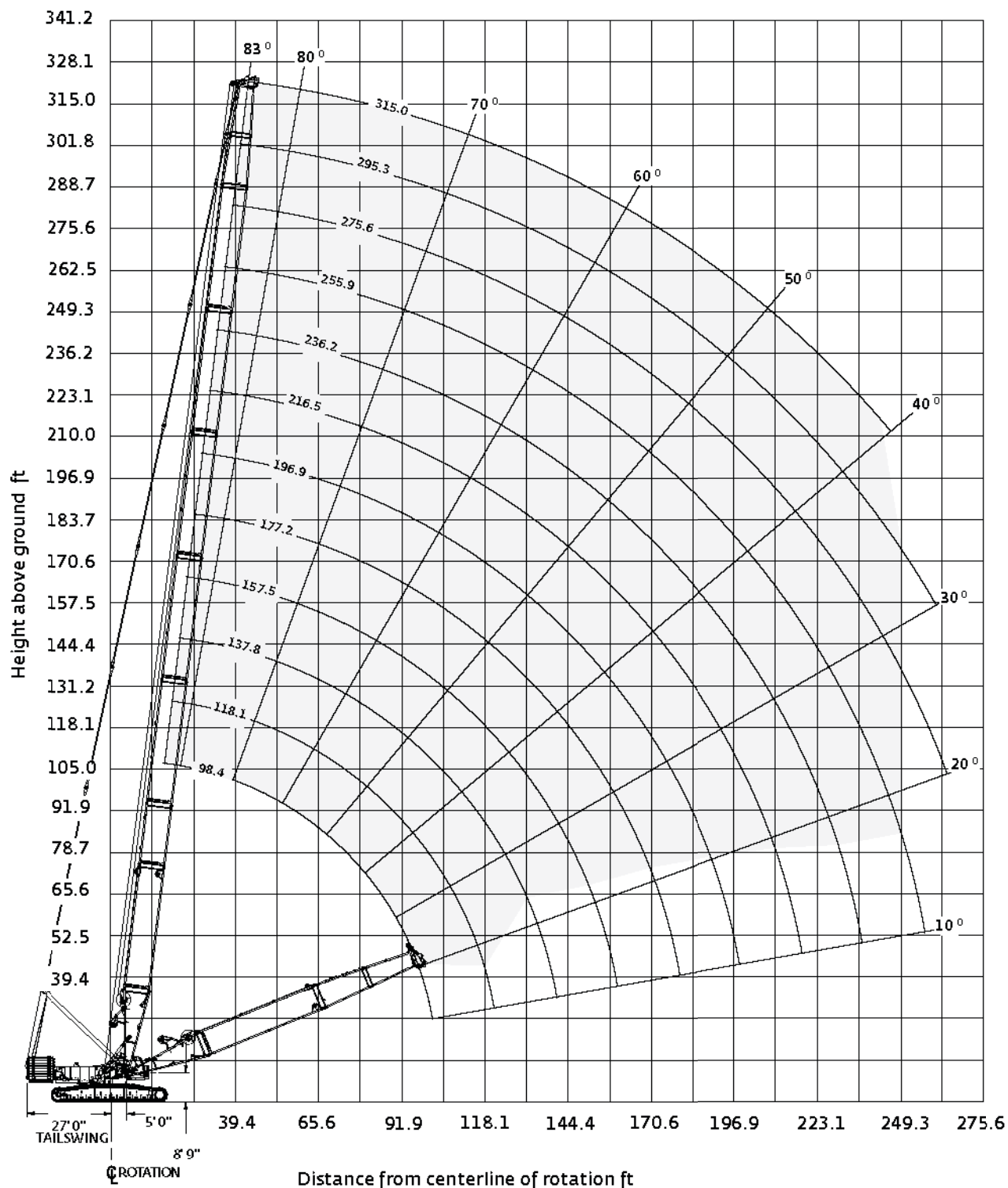
No. 133A fixed jib combinations			
Fixed jib length ft	Fixed jib inserts length ft		
	10.0	20.0	40.0
70	0	0	0
80	1	0	0
90	0	1	0
100	1	1	0
110	0	0	1
120	1	0	1
130	0	1	1
140	1	1	1

No. 59 luffing jib combinations		
Luffing jib length ft	Luffing jib inserts length ft	
	19.7	39.4
78.7	1	0
98.4	0	1
118.1	1	1
118.1	0	2
157.5	1	2
177.24	0	3
196.9	1	3
216.5	0	4
236.2	1	4
255.9	0	5
275.6	1	5



Boom range diagram

No. 58 HL boom



Boom load charts

360° Rating, lb x 1 000

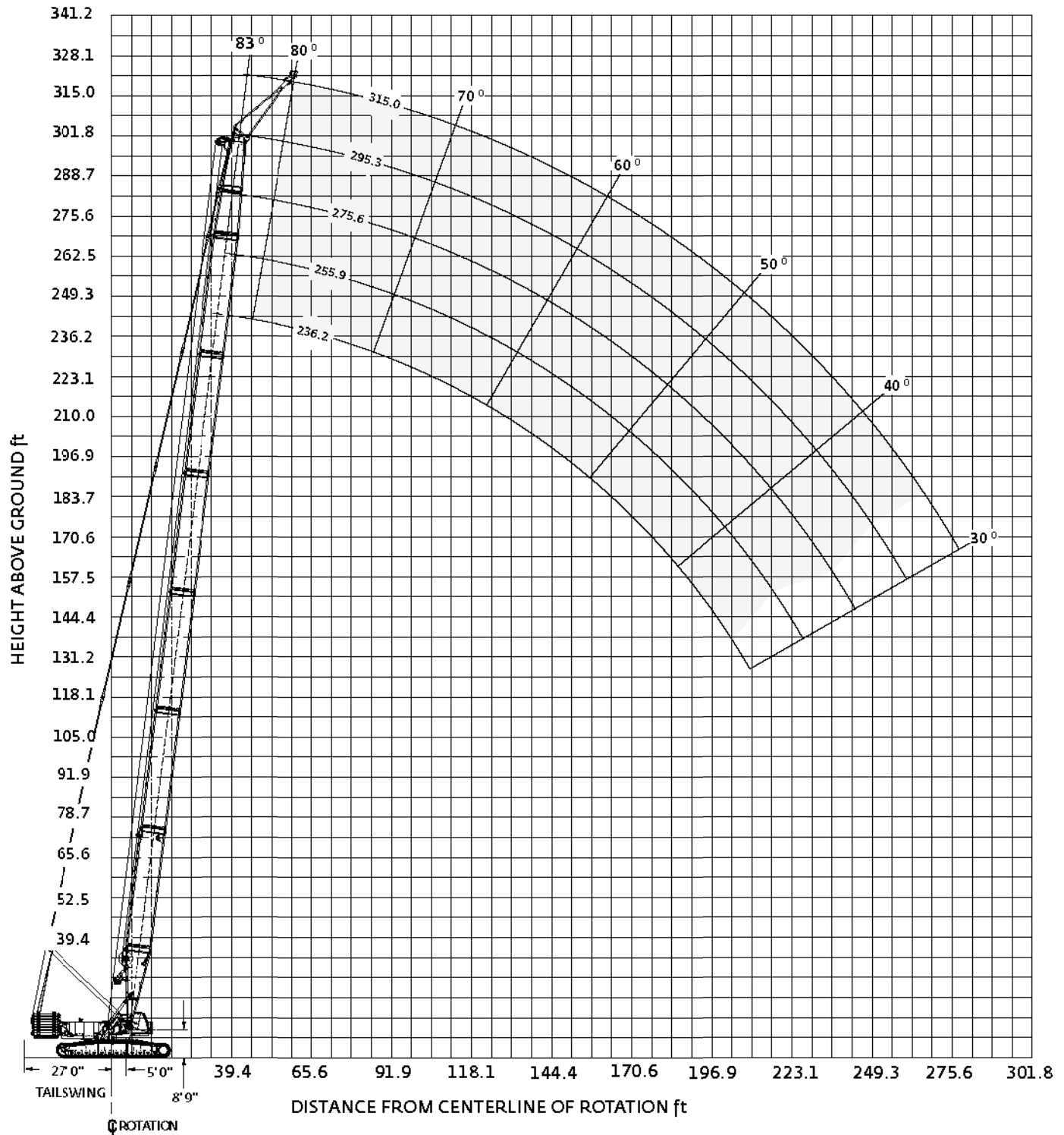
No. 58 HL boom												
Radius ft	332,000 lb Counterweight						120,000 lb Carbody counterweight					
	Boom length ft											
	98.4	118.1	137.8	157.5	177.2	96.9	216.5	236.2	255.9	275.6	295.3	315.0
21	881.9											
26	720.5	719.3	625.7									
32	581.7	581.0	580.8	579.6	483.0							
40	419.1	419.7	420.5	420.4	420.4	397.4	348.9	321.3	302.9			
45	349.9	350.3	351.0	350.7	350.6	350.0	325.9	299.5	288.7	252.0	211.6	
60	229.3	229.5	229.9	229.3	229.0	228.1	227.5	226.4	225.6	224.5	196.3	169.5
70	183.6	183.8	184.2	183.4	183.1	182.0	181.3	180.2	179.2	178.0	176.9	161.6
85	138.5	138.7	139.1	138.3	137.8	136.7	135.9	134.6	133.5	132.2	131.0	129.6
100	108.2	108.9	109.3	108.5	108.0	106.8	106.0	104.6	103.5	102.1	100.9	99.4
110		93.9	94.5	93.7	93.2	92.0	91.1	89.8	88.6	87.1	85.9	84.4
120		81.5	82.3	81.6	81.1	79.9	79.0	77.6	76.4	74.9	73.7	72.1
130			72.1	71.5	71.1	69.8	69.0	67.5	66.3	64.8	63.6	62.0
140				62.9	62.5	61.3	(60.5	59.0	57.8	56.3	55.0	53.4
155				52.1	52.0	50.8	49.9	48.5	47.2	45.7	44.5	42.8
170					43.2	42.2	41.3	39.9	38.7	37.1	35.9	34.2
180						37.2	36.5	35.0	33.8	32.2	31.0	29.3
195						30.7	30.1	28.7	27.5	25.9	24.7	23.0
210							24.6	23.3	22.1	20.5	19.3	17.6
220								20.0	18.9	17.3	16.1	14.5
230								17.1	16.0	14.4	13.2	11.6
255										8.1	7.0	

For complete chart, refer to www.cranelibrary.com.



Extended upper boom point range diagram

No. 58 HL boom with 23 ft extended upper boom point



Extended upper boom point load charts

360° Rating, lb x 1 000

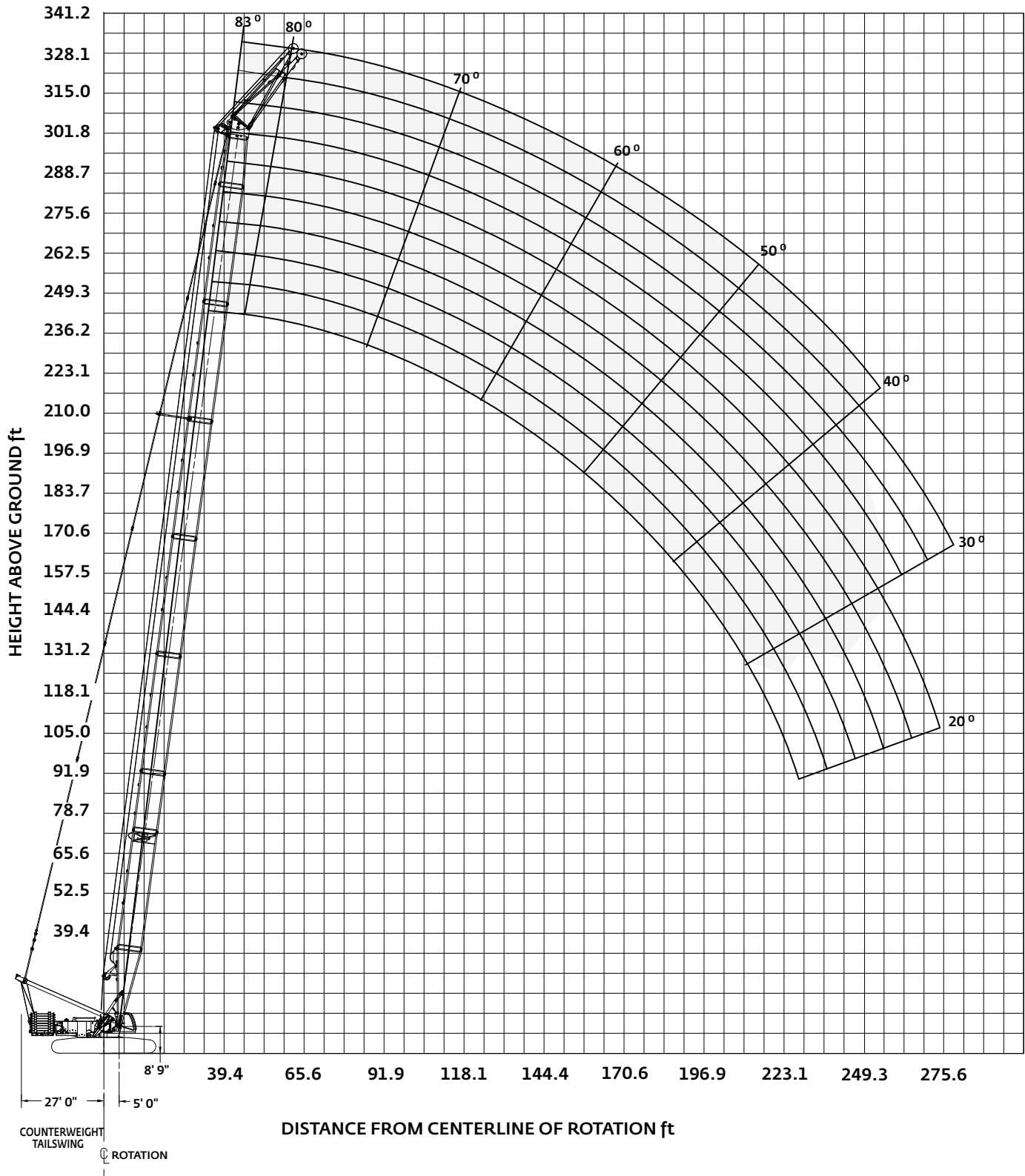
No. 58 HL boom with 23 ft extended upper boom point					
Radius ft	332,000 lb Counterweight 120,000 lb Carbody counterweight				
	Boom length ft				
	216.5	236.2	255.9	275.6	295.3
50	215.2				
55	215.2	215.2	201.5	193.7	
60	215.2	215.2	196.8	190.1	
65	212.3	211.5	192.6	186.6	165.0
75	172.6	171.7	170.8	169.8	158.2
80	157.2	156.1	155.2	154.2	153.2
90	132.2	131.1	130.1	128.9	127.9
95	122.0	120.8	119.8	118.6	117.5
100	112.9	111.7	110.7	109.4	108.3
105	104.9	103.6	102.5	101.3	100.2
115	91.0	89.7	88.6	87.3	86.2
125	79.6	78.3	77.2	75.8	74.6
135	70.1	68.7	67.6	66.2	65.0
145	62.0	60.6	59.4	58.0	56.8
160	51.8	50.4	49.2	47.7	46.5
175	43.5	42.1	40.8	39.4	38.2
185	38.7	37.3	36.1	34.6	33.4
200	32.4	31.1	29.8	28.4	27.1
210		27.4	26.2	24.7	23.5
225			21.3	19.8	18.7
240			17.1	15.6	14.4
250				13.0	11.9
270					7.4

For complete chart, refer to www.cranelibrary.com.



Wind Attachment range diagram

No. 58 WA with 24.9 ft extended upper boom point



Wind Attachment load charts

360° Rating, lb x 1 000

No. 58 WA with 24.9 ft extended upper boom point													
Radius ft	368,000 lb Counterweight 120,000 lb Carbody counterweight												
	28° offset						35° offset						
	Boom length ft						Boom length ft						
	213.2	232.9	252.6	272.3	292.0	301.8	Radius ft	213.2	232.9	252.6	272.3	292.0	301.8
50	286.6	286.6					50	286.6					
60	255.6	254.5	253.7	252.7	251.8	239.4	60	257.5	256.5	255.8	254.9	246.4	232.4
70	204.5	203.2	202.1	200.9	199.8	199.5	70	206.0	204.8	203.9	202.8	201.7	201.2
80	168.5	167.0	165.8	164.5	163.2	162.8	80	169.7	168.3	167.2	166.0	164.8	164.2
90	141.7	140.1	138.8	137.4	136.1	135.6	90	142.8	141.2	140.0	138.7	137.4	136.8
100	121.0	119.3	118.0	116.4	115.1	114.6	100	121.9	120.3	119.0	117.6	116.2	115.6
110	104.6	102.7	101.4	99.8	98.4	97.9	110	105.3	103.6	102.3	100.8	99.4	98.7
120	91.1	89.3	87.9	86.2	84.7	84.2	120	91.8	90.0	88.7	87.1	85.7	84.9
130	80.0	78.1	76.6	75.0	73.4	72.9	130	80.6	78.7	77.3	75.7	74.3	73.5
140	70.5	68.6	67.1	65.4	63.9	63.4	140	71.1	69.2	67.8	66.1	64.6	63.8
150	62.5	60.5	59.0	57.3	55.7	55.2	150	62.9	61.0	59.6	57.9	56.4	55.6
160	55.5	53.5	52.0	50.2	48.6	48.1	160	55.8	53.9	52.5	50.8	49.2	48.4
170	49.3	47.3	45.8	44.1	42.5	41.9	170	49.6	47.7	46.3	44.5	43.0	42.2
190	39.1	37.0	35.6	33.8	32.2	31.6	190	39.3	37.3	35.9	34.2	32.6	31.8
210	30.7	28.8	27.3	25.5	23.9	23.3	210		29.0	27.5	25.8	24.2	23.4
230		21.9	20.5	18.7	17.1	16.6	230			20.7	19.0	17.4	16.6
250			14.7	13.0	10.9	10.1	250				13.2	11.2	10.0

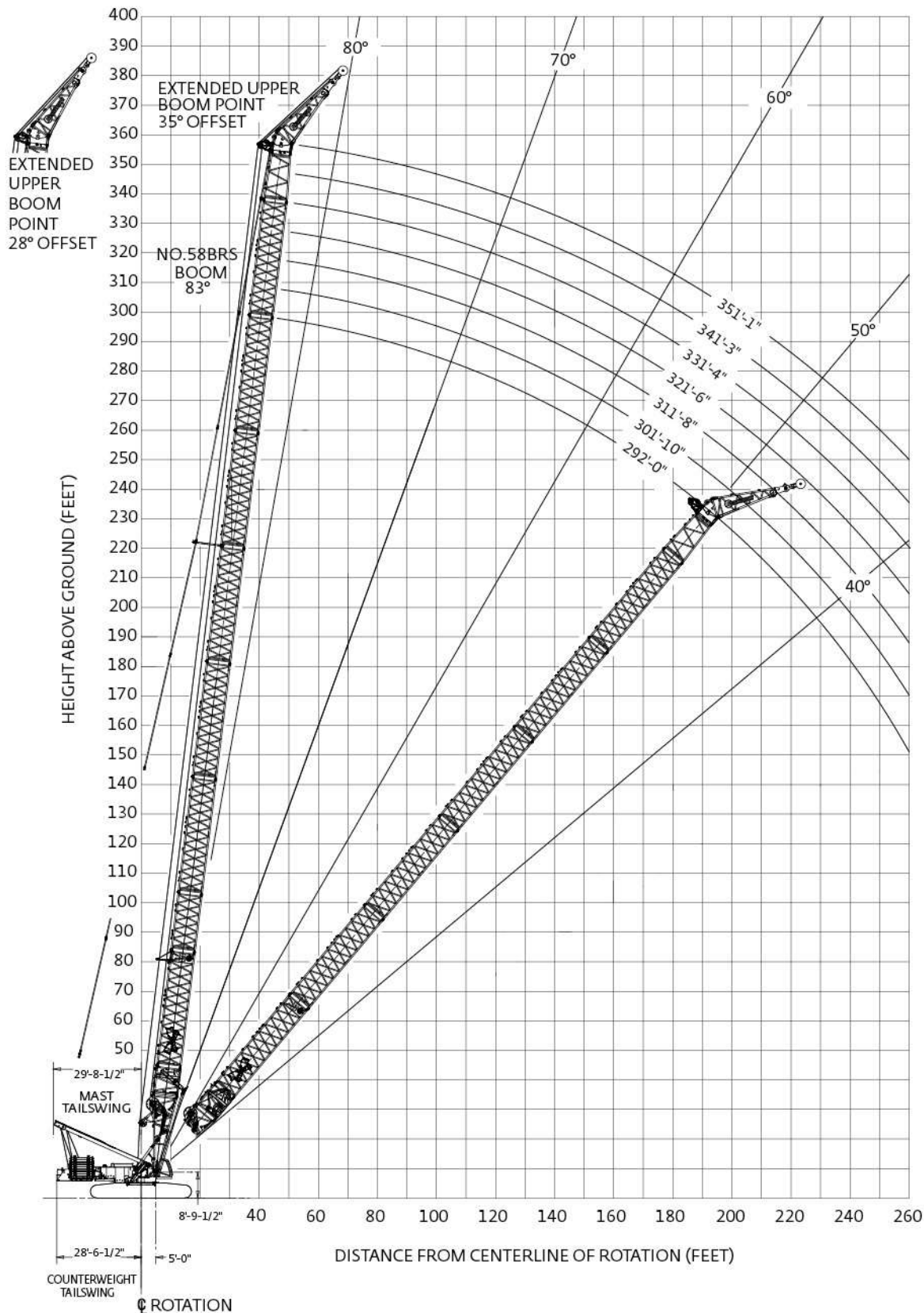
For complete chart, refer to www.cranelibrary.com.



Wind Attachment range diagram

with Boom Raising System

No. 58 WA with BRS with 24.9 ft extended upper boom point



Wind Attachment load charts

with Boom Raising System

360° Rating, lb x 1 000

No. 58 WA with BRS with 24.9 ft extended upper boom point

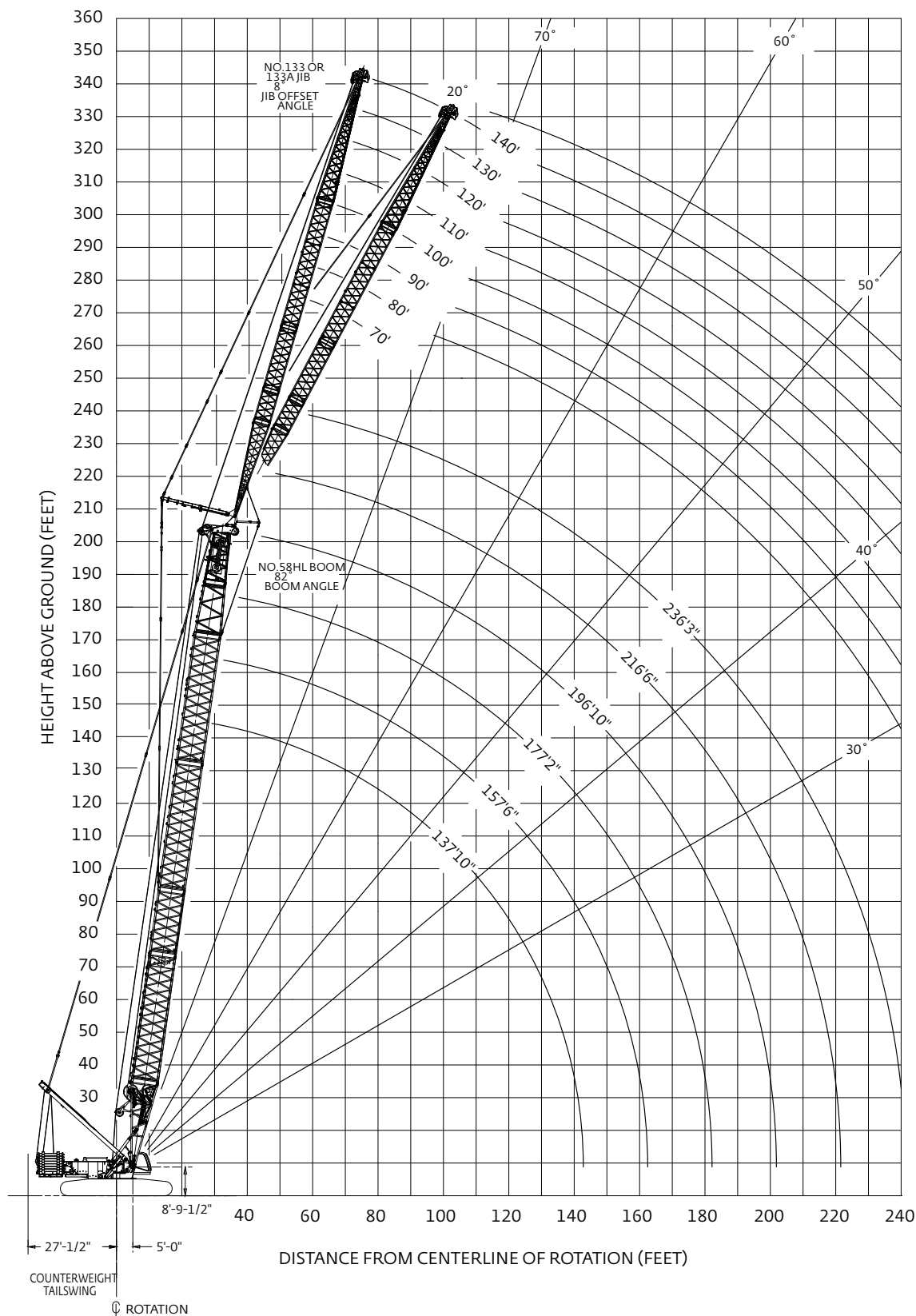
Radius ft	368,000 lb Counterweight 120,000 lb Carbody counterweight 41,300 lb Auxiliary counterweight															
	28° offset								35° offset							
	Boom length ft								Boom length ft							
	292.0	301.8	311.7	321.5	331.4	341.2	351.1		Radius ft	292.0	301.8	311.7	321.5	331.4	341.2	351.1
60	255.8	239.9	236.0	233.1				60	246.9	233.1	224.0					
65	236.5	234.2	232.5	230.2	220.1	200.9	193.8	65	238.3	232.9	217.6	211.4	205.1	189.7		
70	214.4	212.2	210.6	208.4	211.5	197.5	192.1	70	216.1	214.0	212.6	210.5	202.2	186.7	182.2	
80	178.6	176.6	175.1	173.1	176.0	175.2	173.7	80	180.1	178.1	176.8	174.8	177.8	177.0	175.6	
90	151.0	149.0	147.5	145.6	148.0	147.7	146.4	90	152.2	150.3	149.0	147.2	149.8	149.4	148.0	
100	128.4	126.7	125.3	123.7	125.3	125.0	123.8	100	129.7	128.2	126.9	125.3	126.9	126.6	125.4	
110	110.1	108.4	107.1	105.4	107.0	106.7	105.4	110	111.4	109.8	108.4	106.8	108.4	108.1	106.8	
120	95.0	93.3	91.9	90.3	91.8	91.5	90.2	120	96.1	94.5	93.1	91.6	93.0	92.7	91.5	
130	82.3	80.6	79.2	77.6	79.0	78.7	77.4	130	83.3	81.6	80.3	78.7	80.1	79.8	78.6	
140	71.4	69.7	68.3	66.7	68.1	67.8	66.5	140	72.3	70.7	69.3	67.7	69.1	68.8	67.6	
150	62.0	60.3	59.0	57.3	58.7	58.4	57.1	150	62.8	61.2	59.9	58.3	59.6	59.3	58.1	
160	53.8	52.1	50.8	49.2	50.5	50.2	48.9	160	54.5	52.9	51.6	50.0	51.3	51.1	49.8	
170	46.5	44.9	43.6	41.9	43.2	43.0	41.7	170	47.2	45.6	44.3	42.7	44.0	43.8	42.5	
190	34.3	32.7	31.4	29.8	31.1	30.8	29.6	190	34.9	33.3	32.0	30.4	31.7	31.5	30.2	
210	24.4	22.8	21.6	20.0	21.2	21.0	19.7	210	24.9	23.3	22.1	20.5	21.7	21.5	20.3	
230	16.2	14.6	13.4	11.8	13.0	12.8	11.6	230	16.5	15.0	13.8	12.2	13.5	13.3	12.1	
245	10.8							245	11.1							

For complete chart, refer to www.cranelibrary.com.



Fixed jib range diagram

No. 58 HL boom with No. 133A fixed jib



Fixed jib load charts

360° Rating, lb x 1 000

No. 58 HL boom with No. 133A fixed jib

332,000 lb Counterweight
120,000 lb Carbody counterweight

		8° Offset Boom length ft				
70 ft fixed jib length	Radius ft	137.8	157.5	177.2	196.9	216.5
	50	205.7				
	70	182.9	185.5	187.8	188.1	173.8
	90	133.9	132.6	131.2	129.7	128.5
	110	99.3	97.8	96.3	94.7	93.4
	130	76.4	74.8	73.3	71.6	70.2
	150	60.0	58.3	56.9	55.1	53.7
	170	47.7	46.0	44.6	42.8	41.4
	190	38.0	36.4	35.0	33.2	31.8
	210		28.5	27.2	25.5	24.1
	240				16.3	14.9
	265					8.8

		20° Offset Boom length ft				
70 ft fixed jib length	Radius ft	137.8	157.5	177.2	196.9	216.5
	50					
	70	137.1	141.7	145.1	148.5	
	90	115.7	120.9	124.6	128.5	132.0
	110	100.1	101.5	100.3	99.0	98.0
	130	78.9	77.6	76.4	75.0	73.8
	150	61.9	60.5	59.3	57.9	56.7
	170	49.1	47.7	46.5	45.0	43.8
	190		37.6	36.5	35.0	33.7
	210			28.3	26.8	25.6
	240					16.0
	265					

		8° Offset Boom length ft				
90 ft fixed jib length	Radius ft	137.8	157.5	177.2	196.9	216.5
	60	154.5				
	80	138.0	140.1	142.1	142.8	140.9
	100	117.1	115.9	114.4	113.0	118.8
	120	88.9	87.5	86.0	84.4	83.1
	140	69.5	68.0	66.5	64.8	63.4
	160	55.3	53.6	52.1	50.4	49.0
	180	44.4	42.7	41.2	39.4	38.0
	200	35.6	34.0	32.5	30.8	29.3
	220		26.8	25.4	23.7	22.2
	250				15.2	13.7
	275					8.0

		20° Offset Boom length ft				
90 ft fixed jib length	Radius ft	137.8	157.5	177.2	196.9	216.5
	60					
	80	104.0	107.3	109.2		
	100	89.0	92.8	95.0	97.6	99.9
	120	77.8	81.7	84.0	86.8	88.2
	140	69.0	71.2	70.0	68.6	67.5
	160	57.5	56.2	55.0	53.6	52.4
	180	46.1	44.7	43.5	42.0	40.8
	200		35.5	34.3	32.8	31.6
	220			26.8	25.3	24.1
	250					15.1
	275					

For complete chart, refer to www.cranelibrary.com.



Fixed jib load charts

360° Rating, lb x 1 000

No. 58 HL boom with No. 133A fixed jib

332,000 lb Counterweight
120,000 lb Carbody counterweight

		8° Offset Boom length ft				
120 ft fixed jib length	Radius ft	137.8	157.5	177.2	196.9	216.5
	70	114.8	115.4			
	90	102.3	103.9	105.5	106.2	106.0
	110	91.9	94.1	96.2	97.6	98.0
	130	80.2	78.7	77.2	75.6	74.3
	150	63.6	62.0	60.5	58.8	57.4
	170	51.2	49.5	47.9	46.2	44.8
	190	41.5	39.8	38.2	36.4	35.0
	210	33.7	31.9	30.4	28.6	27.1
	230	27.2	25.5	23.9	22.2	20.6
	260		17.5	16.1	14.3	12.8
	285				9.0	7.6

		20° Offset Boom length ft				
120 ft fixed jib length	Radius ft	137.8	157.5	177.2	196.9	216.5
	70					
	90	85.2				
	110	74.3	76.0	96.2	79.4	80.7
	130	65.4	67.4	69.4	71.3	72.8
	150	58.3	60.5	62.6	63.3	62.2
	170	52.5	52.6	51.4	50.0	48.8
	190	43.7	42.3	41.0	39.6	38.4
	210	35.4	34.0	32.7	31.2	30.0
	230		27.1	25.8	24.3	23.1
	260				15.9	14.7
	285					8.9

		8° Offset Boom length ft			
140 ft fixed jib length	Radius ft	137.8	157.5	177.2	196.9
	75	96.1			
	95	85.5	86.7	88.1	88.6
	115	76.5	78.2	80.0	81.1
	135	68.9	70.9	73.0	72.2
	155	60.4	59.7	58.1	56.5
	175	49.4	47.9	46.3	44.6
	195	40.2	38.6	37.0	35.3
	215	32.8	31.1	29.5	27.8
	250	22.6	20.9	19.4	17.6
	275		15.1	13.6	11.9
	300				7.0

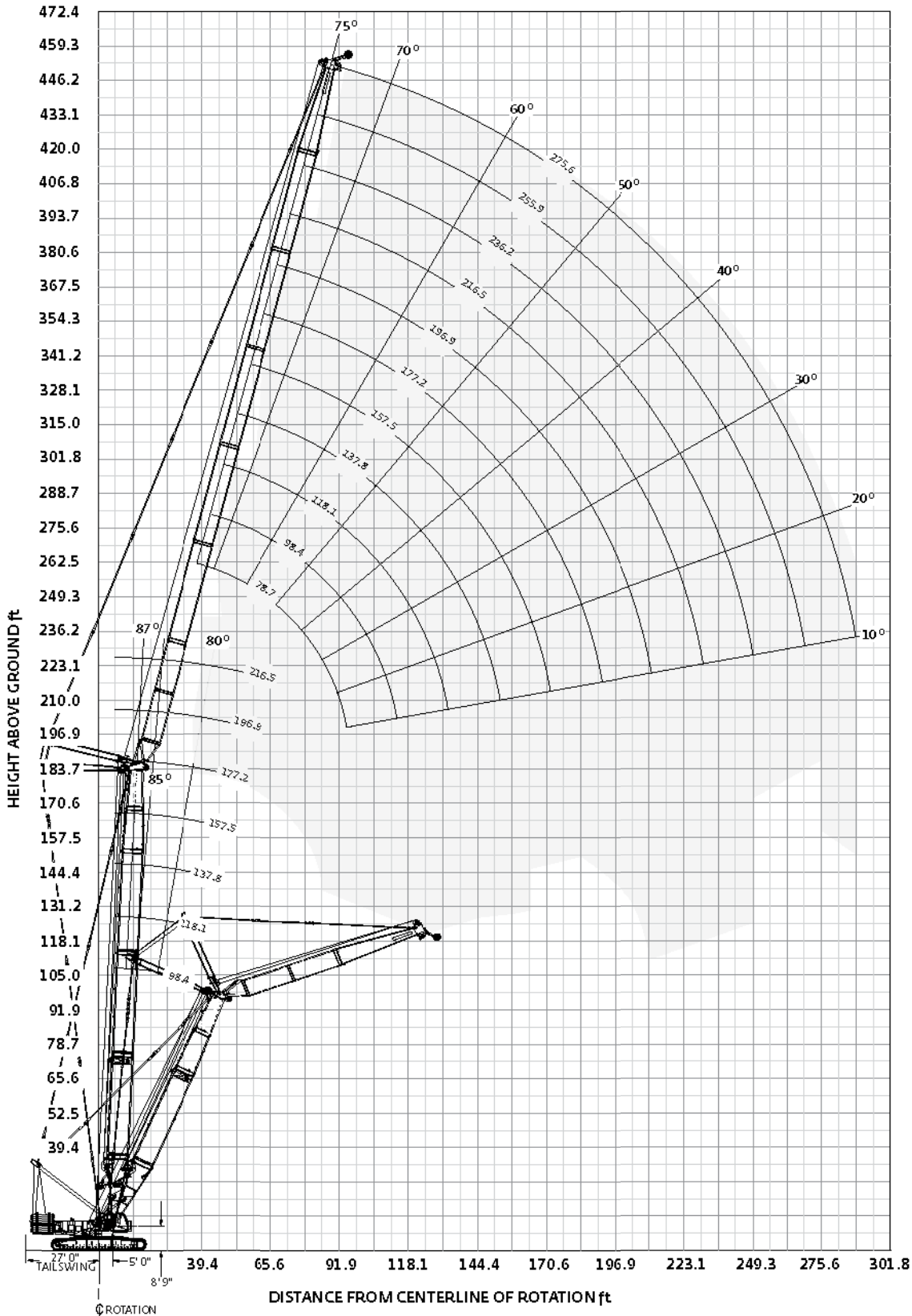
		20° Offset Boom length ft			
140 ft fixed jib length	Radius ft	137.8	157.5	177.2	196.9
	75				
	95				
	115	62.7	63.9	65.3	66.3
	135	55.2	56.7	58.2	59.5
	155	49.1	50.8	52.4	53.9
	175	44.1	45.9	47.6	48.8
	195	40.0	41.5	40.2	38.8
	215	34.9	33.5	32.2	30.8
	250		22.5	21.3	19.8
	275			15.0	13.6
	300				

For complete chart, refer to www.cranelibrary.com.



Luffing jib range diagram

No. 58 HL boom with No. 59 luffing jib



Luffing jib load charts

360° Rating, lb x 1000

No. 58 HL boom with No. 59 luffing jib

332,000 lb Counterweight 120,000 lb Carbody counterweight

87° Boom angle

78.7 ft Luffing jib length

Radius ft	Boom length ft			
	98.4	137.8	177.2	216.5
38	408.5			
45	354.2	333.0	262.3	222.2
60	260.7	244.8	213.0	184.8
75	194.7	194.5	174.9	154.3
90	147.9	147.8	144.3	129.5
105				
125				
145				
175				
185				
195				

118.1 ft Luffing jib length

Radius ft	Boom length ft			
	98.4	137.8	177.2	196.9
50	300.2	252.6		
55	278.3	242.0	205.4	194.5
60	258.6	227.5	194.3	184.4
75	193.7	190.3	165.1	157.0
90	153.3	152.9	141.2	134.6
105	125.8	125.5	121.7	115.8
125	100.2	100.0	98.5	94.7
145				
175				
185				
195				

157.5 ft Luffing jib length

Radius ft	Boom length ft			
	98.4	137.8	177.2	196.9
60	236.8	203.2		
75	191.9	175.1	151.1	142.9
80	176.5	166.8	144.3	136.6
100	132.2	131.8	120.9	144.6
115	110.2	109.9	106.2	100.7
125	98.8	98.6	97.7	92.5
140	85.0	84.8	84.4	81.5
155	74.0	73.8	73.4	71.7
175				54.3
185				
195				

196.9 ft Luffing jib length

Radius ft	Boom length ft			
	98.4	137.8	177.2	196.9
70	189.7	162.2		
80	172.5	151.1	128.1	114.1
95	139.2	133.6	114.7	107.3
115	108.2	107.8	98.3	92.8
135	87.2	86.9	84.4	79.7
160	69.0	68.7	68.3	65.9
185	55.9	55.7	55.3	54.4
210	40.7	40.5	40.3	40.1
240				
280				
290				

236.2 ft Luffing jib length

Radius ft	Boom length ft		
	98.4	137.8	177.2
70			
80	132.1	115.1	
95	127.7	112.4	94.6
115	105.8	103.7	88.0
135	84.8	84.5	78.1
160	66.6	66.3	65.7
185	53.5	53.3	52.9
210	43.7	43.5	43.2
240	34.6	32.5	31.6
280			
290			

275.6 ft Luffing jib length

Radius ft	Boom length ft		
	98.4	137.8	177.2
70			
80			
95	93.3	83.3	70.9
115	89.2	80.5	68.9
135	82.5	77.7	65.2
160	64.2	63.9	57.4
185	51.2	50.9	49.8
210	41.5	41.2	40.9
240	32.5	32.3	32.0
280	21.4	19.5	18.4
290		14.2	14.0

For complete chart, refer to www.cranelibrary.com.

Luffing jib load charts

360° Rating, lb x 1 000

No. 58 HL boom with No. 59 luffing jib

332,000 lb Counterweight 120,000 lb Carbody counterweight

75° Boom angle

78.7 ft Luffing jib length	Radius ft	Boom length ft			
	80	98.4	137.8	177.2	216.5
	90	163.2			
	95	140.3	133.9		
	105	130.9	124.9		
	120	114.9	109.7	103.4	96.0
	125		91.8	213.0	80.5
	140			82.1	76.3
	155				65.1
	175				
	180				
	185				

118.1 ft Luffing jib length	Radius ft	Boom length ft			
	80	98.4	137.8	177.2	196.9
	90				
	95	128.9			
	105	113.3	107.4		
	120	95.2	90.2	84.4	81.0
	125	90.3	125.5	79.9	76.7
	140	77.5	85.5	68.6	65.8
	155		63.7	59.5	57.1
	175				47.5
	180				
	185				

157.5 ft Luffing jib length	Radius ft	Boom length ft			
	110	98.4	137.8	177.2	196.9
	120	104.2			
	125	92.9	87.5		
	135	87.9	82.8		
	140	79.3	74.6	69.2	
	145	75.5	71.0	65.8	62.8
	155	71.9	67.6	62.6	59.8
	165	65.6	61.6	56.9	54.3
	185	60,0	56.3	52.0	49.6
	200	50.6	47.5	43.7	41.6
	215		41.8	38.6	36.7
				32.2	

196.9 ft Luffing jib length	Radius ft	Boom length ft			
	135	98.4	137.8	177.2	196.9
	145	76.7			
	160	69.4	64.9		
	180	60.3	56.2	51.5	48.9
	200	50.6	47.0	42.9	40.6
	220	42.9	39.8	36.1	34.0
	240	36.6	33.8	30.5	28.7
	250		28.6	25.8	24.2
	265			23.6	22.1
	280				
	300				

236.2 ft Luffing jib length	Radius ft	Boom length ft		
	135	98.4	137.8	157.5
	145			
	160	57.4	53.1	
	180	47.8	44.1	41.9
	200	40.2	36.9	35.0
	220	31.4	31.1	29.3
	240	28.9	26.2	24.7
	250	26.7	24.1	22.6
	265		—	—
	280		18,2	17,1
	300			

275.6 ft Luffing jib length	Radius ft	Boom length ft	
	135	98.4	
	145		
	160		
	180	45.1	
	200	37.6	
	220	31.5	
	240	26.4	
	250	24.2	
	265	—	
	280	18.5	
	300	15.2	

For complete chart, refer to www.cranelibrary.com.



Luffing jib load charts

360° Rating, lb x 1000

No. 58 HL boom with No. 59 luffing jib

332,000 lb Counterweight 120,000 lb Carbody counterweight

65° Boom angle

78.7 ft Luffing jib length		Boom length ft			
	Radius ft	98.4	137.8	177.2	216.5
	105	105.7			
	120	88.7	80.8		
	135		68.9		
	145		61.9	60.6	
	160			47.2	39.8
	175				34.3
	185				
	200				
	205				
	225				
240					

118.1 ft Luffing jib length		Boom length ft			
	Radius ft	98.4	137.8	177.2	196.9
	105				
	120				
	135	74.0			
	145	67.1	60.1		
	160	58.4	52.2	44.9	
	175		45.7	39.2	35.4
	180		43.7	34.3	33.8
	200			31.2	28.2
	205				26.9
	225				
240					

157.5 ft Luffing jib length		Boom length ft			
	Radius ft	98.4	137.8	177.2	
	105				
	120				
	135				
	145				
	160	56.1			
	175	49.2	43.1		
	180	47.1	41.2		
	200	39.9	34.8	28.7	
	205	38.2	33.3	27.5	
	225			23.0	
240			19.8		

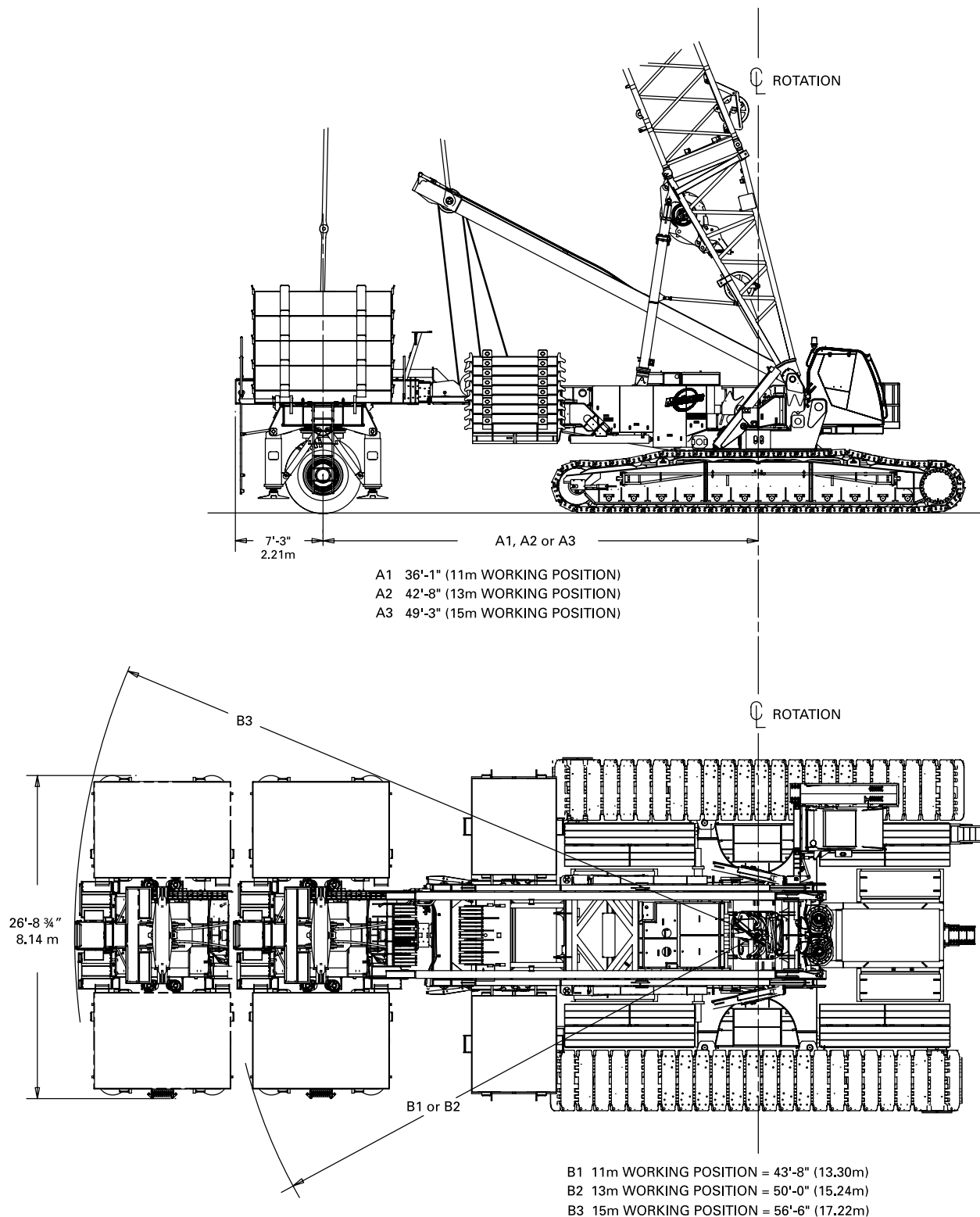
196.9 ft Luffing jib length		Boom length ft	
	Radius ft	98.4	137.8
	180	44.5	
	185	42.6	
	190	40.8	34.9
	200	37.5	31.9
	210	34.5	29.3
	225	30.5	25.7
	240	26.9	22.5
	245	25.7	21.5
	250		20.6
	260		18.7
	280		

236.2 ft Luffing jib length		Boom length ft	
	Radius ft	98.4	
	180		
	185		
	190		
	200	34.5	
	210	31.6	
	225	27.7	
	240	24.3	
	245	23.2	
	250	22.2	
	260	20.3	
280	16.8		

For complete chart, refer to www.cranelibrary.com.

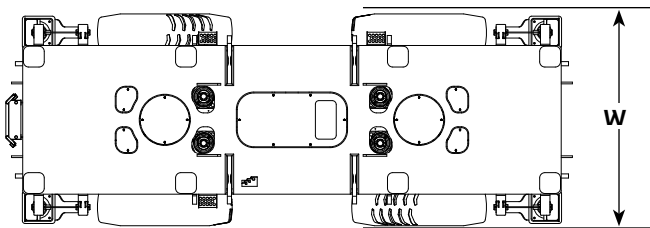
Outline dimensions

MAX-ER®



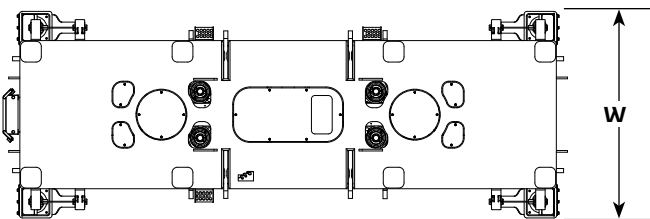
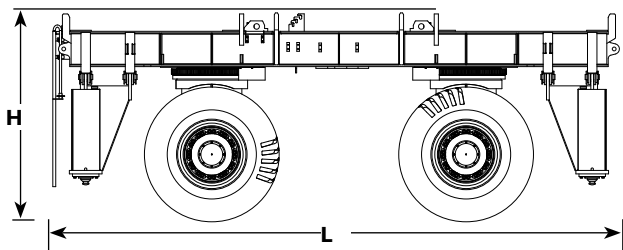
Outline dimensions

MAX-ER®



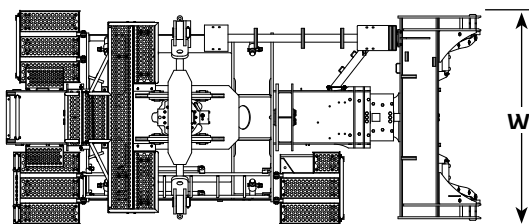
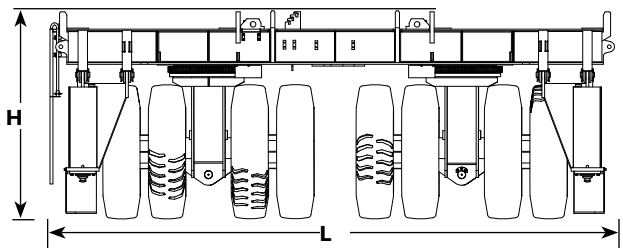
Wheeled carrier (US)

Length	26' 9"
Width	10' 0"
Height	9' 10"
Weight	62,400 lb



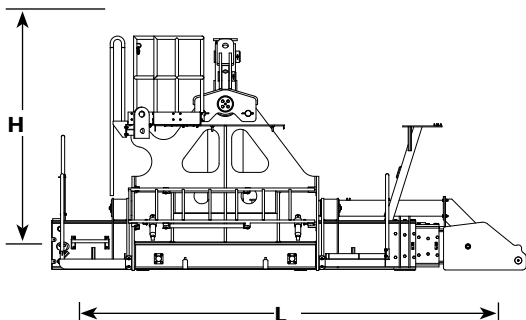
Wheeled carrier (European)

Length	26' 9"
Width	9' 9"
Height	9' 10"
Weight	63,100 lb



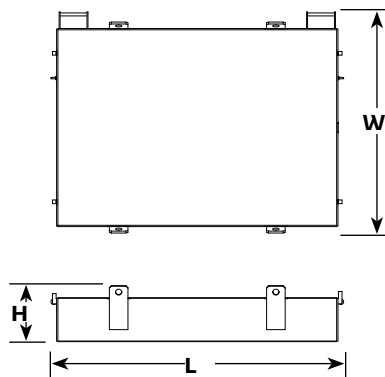
Lifting frame and telescopic beam

Length	19' 10"
Width	8' 11"
Height	9' 9"
Weight	37,100 lb



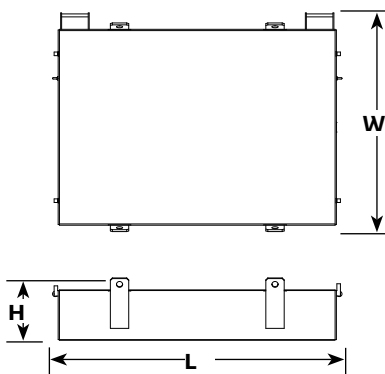
Outline dimensions

MAX-ER®



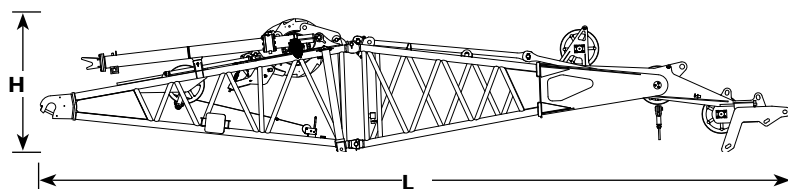
Side counterweight

Length	11' 9"
Width	8' 11"
Height	2' 3"
Weight	30,000 lb



Side counterweight

Length	11' 9"
Width	8' 11"
Height	2' 6"
Weight	44,000 lb

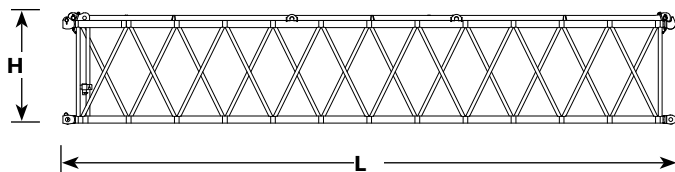


No. 59A mast butt and top package, drum, wire rope, equilizer

Length	48' 8"
Width	9' 10"
Height	8' 9"
Weight	45,400 lb

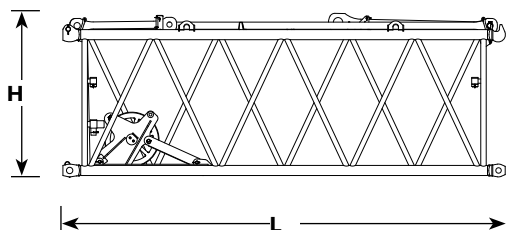
Outline dimensions

MAX-ER®



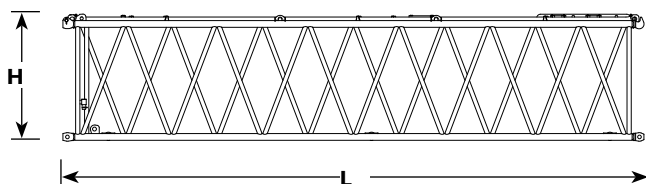
394' No. 59A mast insert

Length	40' 0"
Width	8' 11"
Height	7' 4"
Weight	9,645 lb



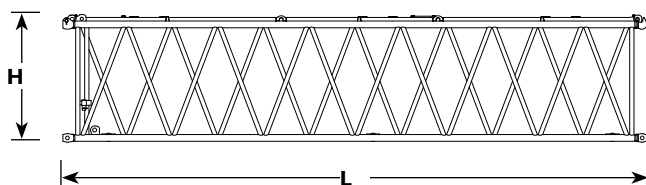
198' No. 59A mast insert

Length	20' 4"
Width	8' 11"
Height	7' 6"
Weight	7,420 lb



394' No. 58 heavy boom insert with equilibrizer rails

Length	40' 0"
Width	9' 9"
Height	8' 9"
Weight	10,145 lb



394' No. 58 heavy boom insert

Length	40' 0"
Width	9' 9"
Height	8' 9"
Weight	11,215 lb

Boom combinations with mast

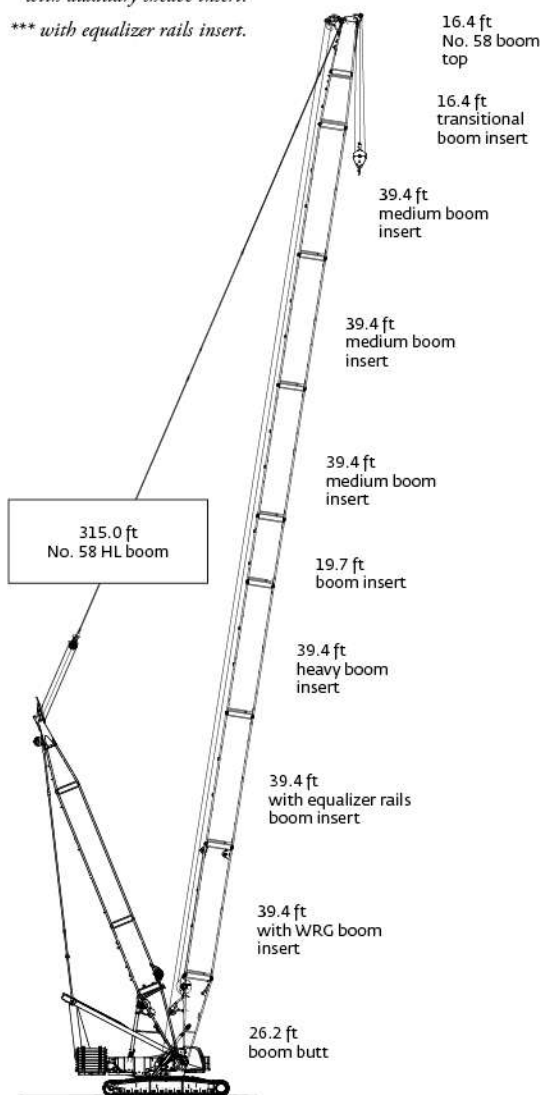
No. 58 HL boom combinations

Boom length ft	Boom inserts length ft				
	16.4°	19.7	39.4	39.4 ^{°°}	39.4 ^{°°°}
137.8	1	0	0	1	1
157.5	1	1	0	1	1
177.2	1	0	1	1	1
196.9	1	1	1	1	1
216.5	1	0	2	1	1
236.2	1	1	2	1	1
255.9	1	0	3	1	1
275.6	1	1	3	1	1
295.3	1	0	4	1	1
315.0	1	1	4	1	1

*transition boom insert.

**with auxiliary sheave insert.

*** with equalizer rails insert.



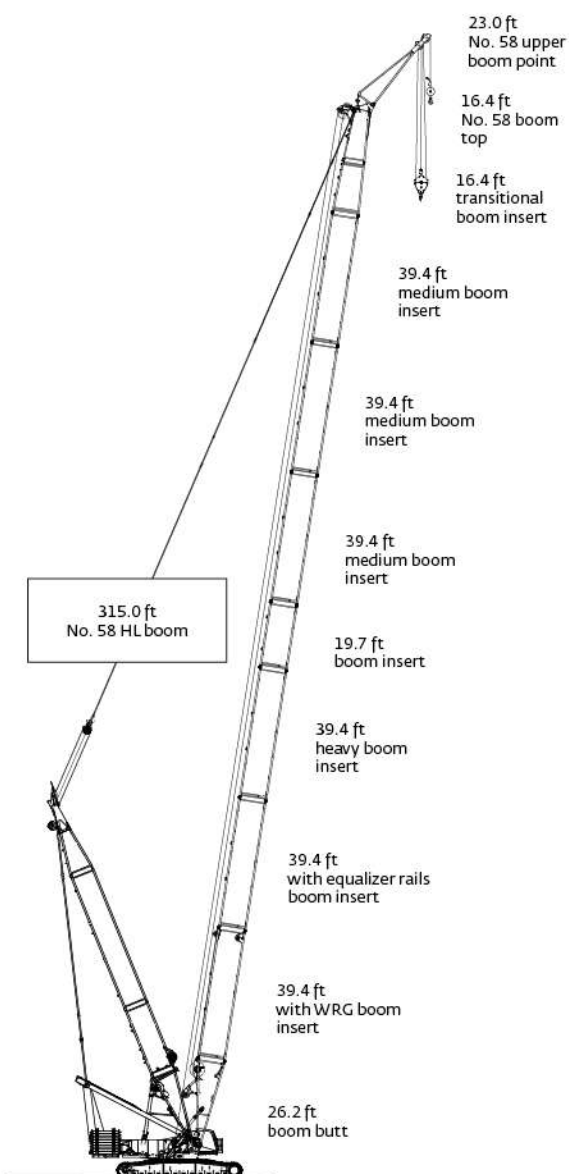
No. 58 HL boom with 23 ft extended upper boom point combination

Boom length ft	Boom inserts length ft					
	16.4°	19.7	39.4 medium	39.4 ^{°°}	39.4 ^{°°°}	39.4 heavy
315.0	1	1	3	1	1	1

*transition boom insert.

**with auxiliary sheave insert.

*** with equalizer rails insert.



Boom combinations

MAX-ER®

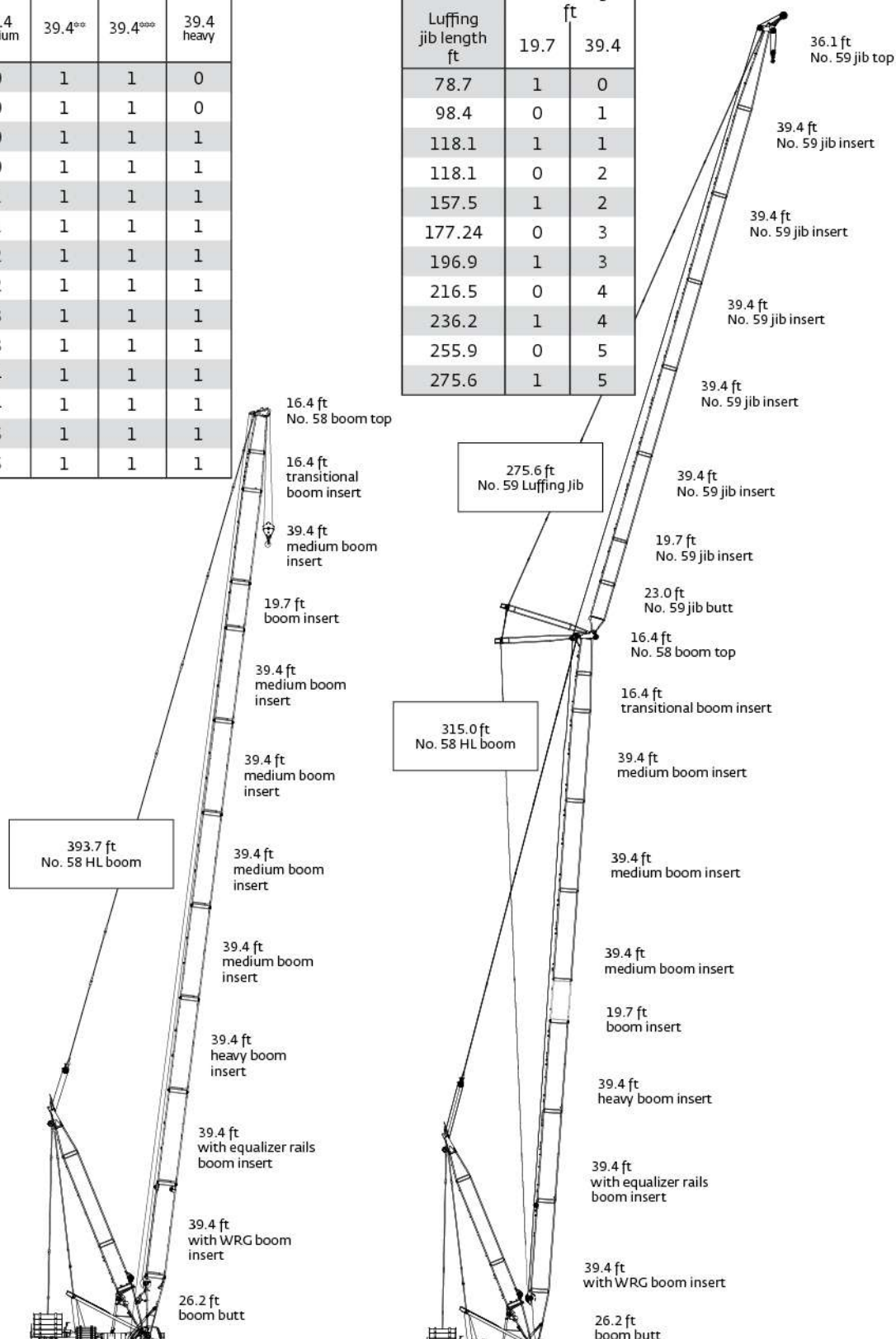
No. 58 HL boom combinations						
Boom length ft	Boom inserts length ft					
	16.4 [*]	19.7	39.4 medium	39.4 ^{**}	39.4 ^{***}	39.4 heavy
137.8	1	0	0	1	1	0
157.5	1	1	0	1	1	0
177.2	1	0	0	1	1	1
196.9	1	1	0	1	1	1
216.5	1	0	1	1	1	1
236.2	1	1	1	1	1	1
255.9	1	0	2	1	1	1
275.6	1	1	2	1	1	1
295.3	1	0	3	1	1	1
315.0	1	1	3	1	1	1
334.6	1	0	4	1	1	1
354.3	1	1	4	1	1	1
374.0	1	0	5	1	1	1
393.7	1	1	5	1	1	1

^{*}transition boom insert.

^{**}with auxiliary sheave insert.

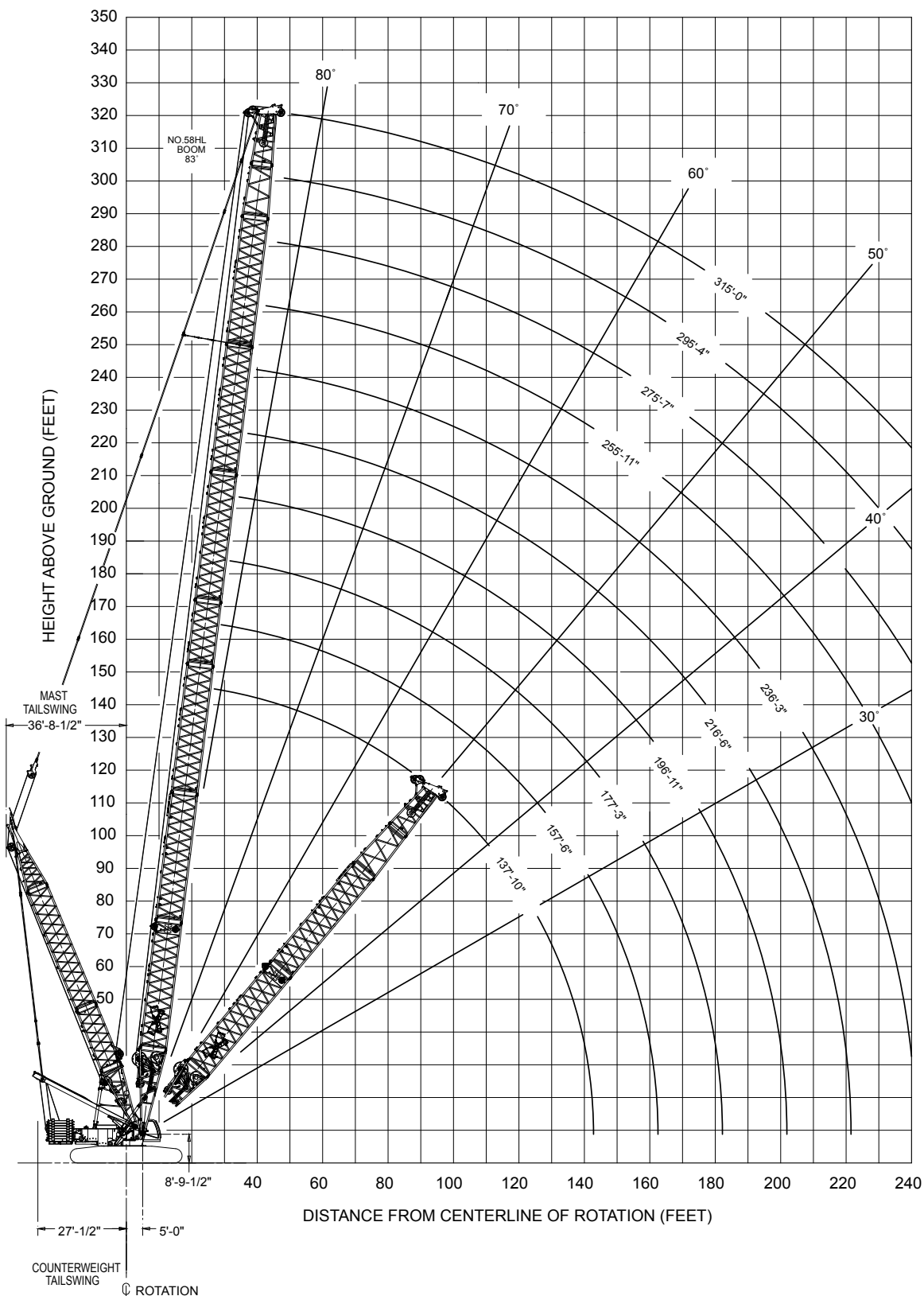
^{***}with equalizer rails insert.

No. 59 luffing jib combinations		
Luffing jib length ft	Luffing jib inserts length ft	
	19.7	39.4
78.7	1	0
98.4	0	1
118.1	1	1
118.1	0	2
157.5	1	2
177.24	0	3
196.9	1	3
216.5	0	4
236.2	1	4
255.9	0	5
275.6	1	5



Boom range diagram with Mast

No. 58 HL boom with 98.4 ft No.59A mast



Boom load charts

with Mast

360° Rating, lb x 1 000

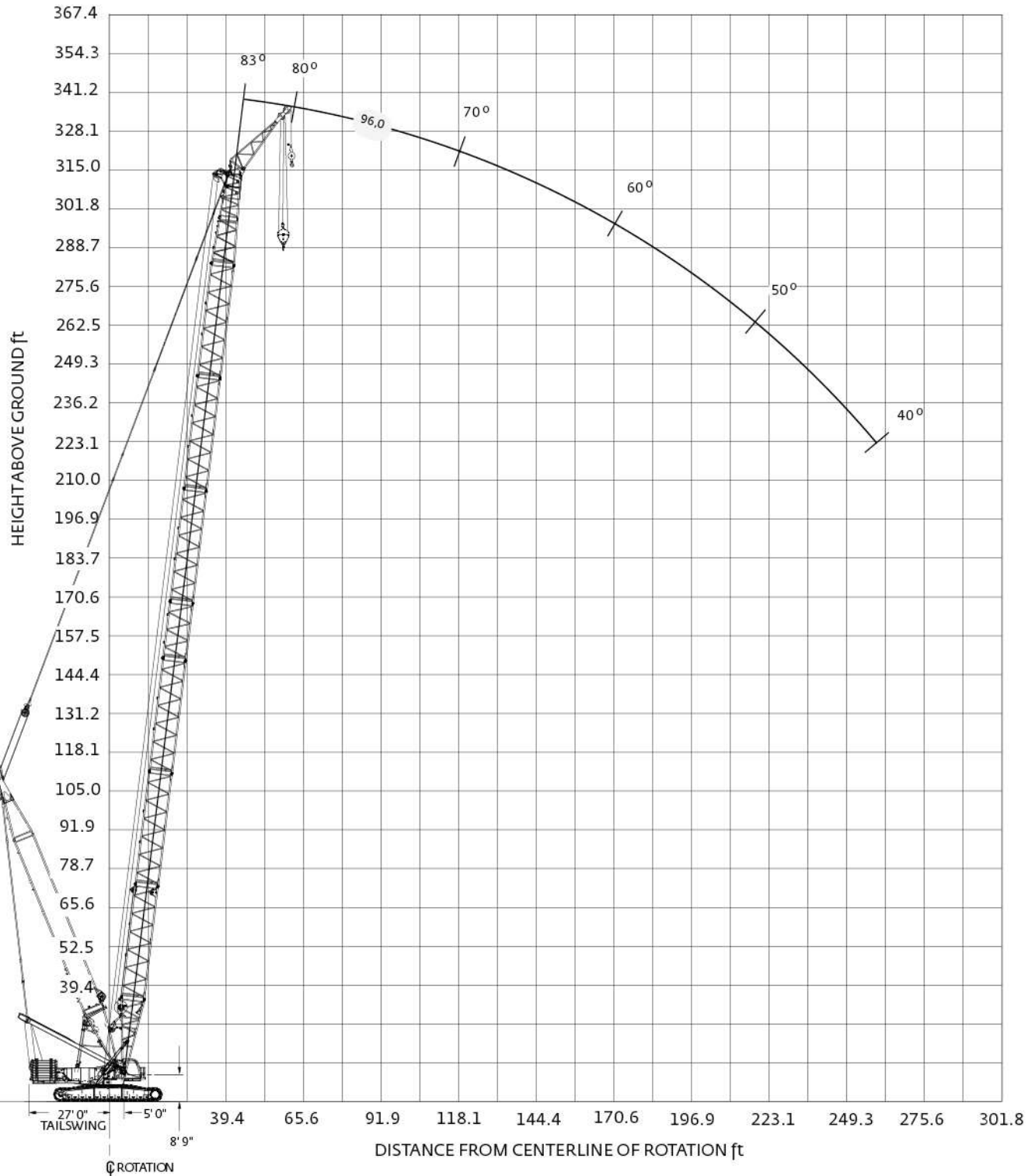
No. 58 HL boom with 98.4 ft No.59A mast

Radius ft	349,600 lb Counterweight 120,000 lb Carbody counterweight									
	Boom length ft									
	137.8	157.5	177.2	196.9	216.5	236.2	255.9	275.6	295.3	315.0
26	738.6									
40	464.6	465.2	465.3	465.2	465.8	465.3	452.3			
50	331.9	332.1	331.9	331.4	331.6	330.9	330.5	329.6	327.2	279.8
65	227.4	227.2	226.6	225.8	225.9	224.8	224.2	223.0	222.4	221.2
80	169.1	168.6	167.9	167.0	166.9	165.7	164.9	163.6	163.0	178.2
90	142.6	142.1	141.4	140.4	140.3	139.0	138.1	136.8	136.1	134.5
105	113.6	113.0	112.2	111.1	111.0	109.7	108.7	107.3	106.6	104.9
120	92.5	91.9	91.1	90.0	89.8	88.5	87.5	86.0	85.2	83.6
130	81.4	80.8	80.0	78.8	78.7	77.3	76.3	74.8	74.0	72.3
145		67.2	66.4	65.2	65.1	63.7	62.7	61.1	60.4	58.6
155			58.8	57.7	57.5	56.2	55.2	53.6	52.8	51.1
170			49.2	48.2	48.0	46.6	45.6	44.1	43.3	41.5
185				40.2	40.1	38.7	37.7	36.2	35.4	33.6
195					35.5	34.1	33.2	31.6	30.8	29.0
210					29.3	28.1	27.1	25.6	24.8	23.0
230						21.1	2.3	18.8	18.1	15.9
260								9.1		



Extended upper boom point range diagram

No. 58 HL boom with 98.4 ft No. 59A mast and 23 ft extended upper boom point



Extended upper boom point load charts

360° Rating, lb x 1 000

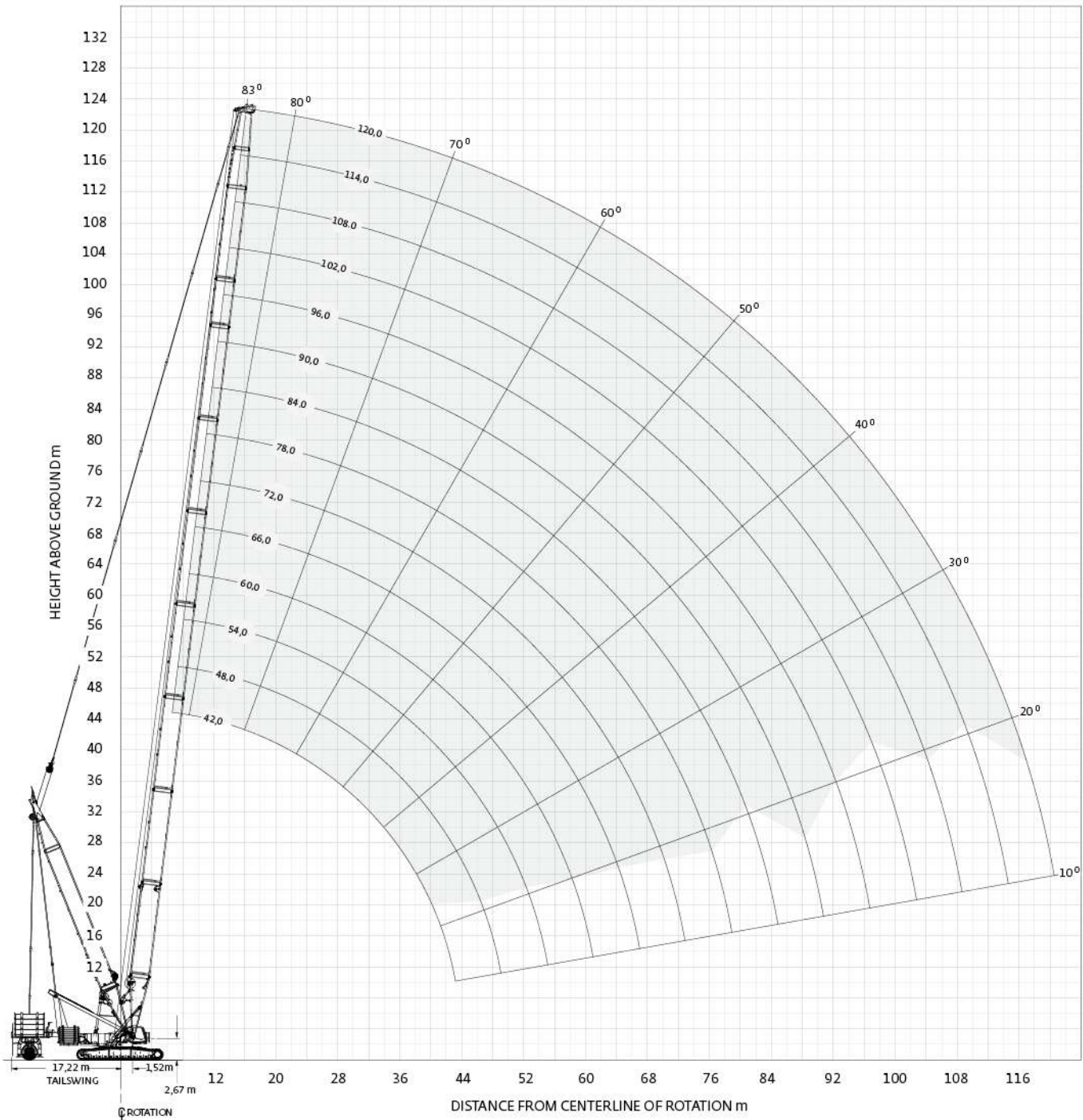
No. 58 HL boom with 98.4 ft No. 59A mast and 23 ft extended upper boom point	
Radius ft	332,000 lb Counterweight 120,000 lb Carbody counterweight
	Boom length ft
	315.0
60	179.8
65	179.8
70	179.8
80	170.7
85	155.8
100	121.2
105	112.2
110	104.1
115	96.8
125	84.1
140	68.7
150	60.3
165	49.8
175	43.8
190	36.1
200	31.6
210	27.6
215	25.7
230	20.6
235	19.0
245	16.0
255	12.7
260	11.1
270	8.1

For complete chart, refer to www.cranelibrary.com.



MAX-ER® range diagram

**MAX-ER at 49.2 ft position
No. 58 HL boom with 98.4 ft No.59A mast**



MAX-ER® load charts

360° Rating, lb x 1 000

MAX-ER at 49.2 ft position No. 58 HL boom with 98.4 ft No.59A mast

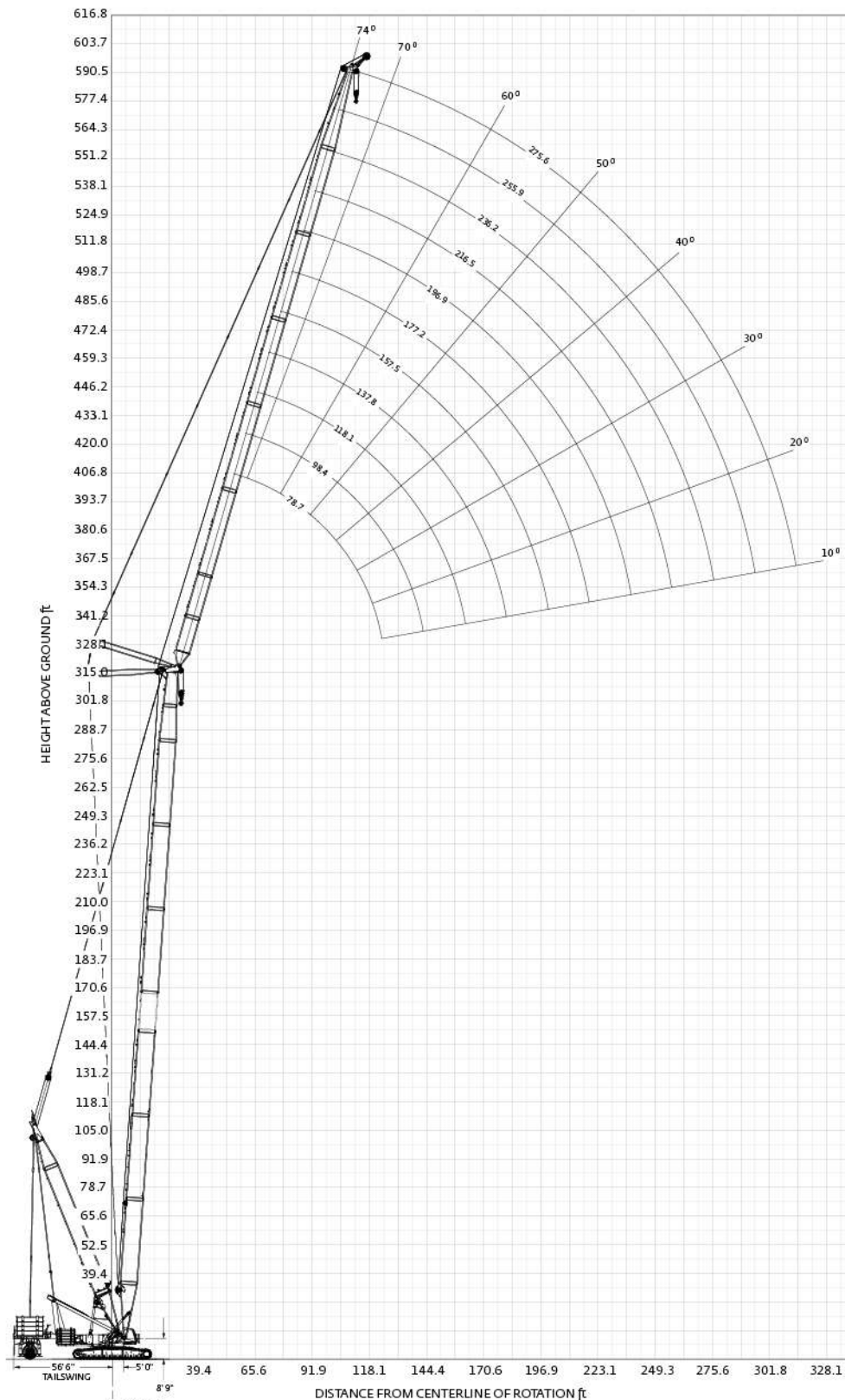
Radius ft	332,000 lb Counterweight 120,000 lb Carbody counterweight 511,400 lb Wheeled counterweight													
	Boom length ft													
	137.8	157.5	177.2	196.9	216.5	236.2	255.9	275.6	295.3	315.0	334.6	354.3	374.0	393.7
26	837.4													
34	837.4	749.7	688.1	623.6										
40	837.4	749.7	686.4	622.6	553.8	502.3	452.3							
50	728.0	726.9	675.6	605.4	545.6	491.5	445.5	390.3	327.2	279.8	237.7			
60	605.2	604.1	602.7	587.1	530.8	479.2	437.8	390.3	327.2	279.8	237.7	205.0	175.7	152.1
70	516.4	515.2	513.9	512.3	511.7	466.9	430.3	386.1	327.2	279.8	237.7	204.7	175.4	151.8
80	449.1	448.0	446.7	445.1	444.5	442.8	422.9	374.3	319.1	279.8	237.4	204.4	174.9	151.3
100	354.1	352.9	351.6	350.1	349.6	347.8	346.5	344.7	300.8	278.9	234.5	200.4	170.8	147.8
120	289.9	288.9	287.6	286.1	285.6	283.9	282.6	280.8	279.8	273.1	229.4	195.9	166.7	142.0
140		242.7	241.5	240.0	239.6	237.9	236.6	234.8	233.8	231.8	224.3	191.4	162.5	134.0
160			206.6	205.2	204.8	203.2	202.0	200.1	199.2	197.2	196.0	186.8	158.4	126.0
180				177.9	177.6	176.0	174.8	173.0	172.1	170.1	168.9	167.0	154.4	118.0
200					155.2	153.7	152.6	150.9	150.0	148.1	147.0	145.2	143.9	110.0
220						135.3	134.3	132.7	131.8	129.9	128.8	127.0	125.7	102.0
240							119.0	117.4	116.6	114.7	113.6	111.8	110.6	94.0
260								104.4	103.7	101.9	100.8	99.0	97.8	86.0
280									92.6	90.8	89.8	88.0	86.8	80.0
300										81.1	80.1	78.4	77.2	75.0
330												66.1	65.0	62.8
340													56.4	58.5
350														54.4
360														50.6

For complete chart, refer to www.cranelibrary.com.

Luffing jib range diagram

MAX-ER®

MAX-ER at 49.2 ft position
No. 58 HL boom with No. 59 luffing jib



Luffing jib load charts

MAX-ER®

360° Rating, lb x 1 000

MAX-ER at 49.2 ft position No. 58 HL boom with No. 59 luffing jib

		332,000 lb Counterweight 120,000 lb Carbody counterweight 511,400 lb Wheeled counterweight 86° Boom angle															
	Radius ft	Boom length ft					Radius ft	Boom length ft					Radius ft	Boom length ft			
		138.0	197.0	256.0	315.0			138.0	197.0	256.0	315.0			138.0	197.0	256.0	315.0
79.0 ft Luffing jib length	45	408.9				118.0 ft Luffing jib length	55	321.0				157.0 ft Luffing jib length	65	255.6			
	50	364.9	339.6				65	277.1	246.9	169.2			70	249.2	190.8		
	55	308.0	307.6	223.8	142.9		80	219.4	205.7	149.9	104.4		85	209.3	170.7	121.5	84.1
	60	298.5	281.8	216.0	135.9		85	205.8	193.8	143.2	101.7		100	173.7	148.4	108.5	77.6
	65	274.7	260.7	205.6	133.8		90	194.1	183.6	136.6	97.9		110	156.9	134.0	99.9	72.3
	70	255.1	243.1	195.3	131.4		105	167.5	154.8	118.0	86.9		125	138.1	114.6	87.8	64.8
	80	225.8	216.3	175.6	125.4		110	161.0	145.7	112.5	83.6		135	127.2	103.3	80.6	60.2
	85	215.3	206.6	166.7	120.2		120	150.9	130.4	102.8	77.4		150	108.0	89.3	71.3	54.2
	90	207.8	199.2	158.8	115.4		125	144.6	124.1	98.6	74.7		165	94.0	79.0	64.2	49.4
	100		160.4	147.4	107.7		135	107.6	115.1	92.2	70.3		180			60.8	46.6
105				103.8	145				68.1	185				46.6			
197.0 ft Luffing jib length		Boom length ft				236.0 ft Luffing jib length		Boom length ft				276.0 ft Luffing jib length		Boom length ft			
	Radius ft	138.0	197.0	256.0	315.0		Radius ft	138.0	197.0	256.0	315.0		Radius ft	138.0	197.0	256.0	315.0
	75	176.3					90	122.6	103.7				100	87.6			
	90	174.1	136.0	97.6	66.8		105	120.2	101.6	74.2	52.0		125	83.9	74.2	55.3	38.5
	105	157.4	123.2	89.5	63.4		125	113.6	90.9	67.0	47.2		145	80.9	68.1	50.4	35.0
	125	133.0	105.0	78.0	56.1		145	99.7	79.6	59.3	42.2		165	75.2	60.8	45.3	31.4
	135	121.3	96.3	72.4	52.6		165	86.1	68.8	52.0	37.3		185	66.9	53.8	40.4	28.0
	150	105.1	84.3	64.6	47.5		180	76.8	61.6	47.0	34.0		205	59.2	47.4	35.8	24.9
	165	91.2	74.0	57.6	43.0		190	71.1	57.2	44.0	31.9		225	52.3	41.9	31.9	22.2
	185	76.4	62.8	50.1	37.9		210	61.3	49.6	38.7	28.4		245	46.3	37.1	28.5	19.9
	200	68.1	56.7	45.8	35.0		230	53.6	43.8	34.7	25.6		265	39.4	33.5	26.0	18.2
	210	59.7	54.0	43.9	33.6		250	40.5	40.2	32.2	23.9		285	30.2	31.1	24.4	17.1
	225				33.0		265				23.7		305				15.9

For complete chart, refer to www.cranelibrary.com.

Manitowoc Crane Care

Manitowoc Crane Care is the industry's most advanced service and support program, designed to keep your cranes up and running. Manitowoc's distributor network and customer support personnel are available to support you 24 hours a day, 7 days a week, 365 days a year. There are five key disciplines of Manitowoc Crane Care:

Parts

Genuine Manitowoc replacement parts are accessible through your distributor.

Service and technical support

Assistance with crane selection, lift planning and ground bearing calculations or field service and maintenance.

Technical publications

Operator, parts, service and capacity chart manuals are available in multiple formats in major languages.

Training

A variety of training courses are available online or through Manitowoc training centers.

EnCORE

Rebuild, repair, remanufacture or exchange your current crane through our local network, for a fraction of the cost of a new crane.

www.manitowoccranecare.com

CraneSTAR

CraneSTAR is an exclusive and innovative crane asset management system that helps improve your profitability and reduce costs by remotely monitoring critical crane data. Visit www.cranestar.com for more information.

Notes







Grove Maniowoc National Crane Potain



Maniowoc Cranes

Regional headquarters

Americas

Maniowoc, Wisconsin, USA

Tel: +1 920 684 6621

Fax: +1 920 683 6277

Shady Grove, Pennsylvania, USA

Tel: +1 717 597 8121

Fax: +1 717 597 4062

Europe, Middle East, Africa

Ecully, France

Tel: +33 (0)4 72 18 20 20

Fax: +33 (0)4 72 18 20 00

China

Shanghai, China

Tel: +86 21 6457 0066

Fax: +86 21 6457 4955

Greater Asia-Pacific

Singapore

Tel: +65 6264 1188

Fax: +65 6862 4040

Regional offices

Americas

Brazil

Alphaville

Mexico

Monterrey

Chile

Santiago

Europe, Middle East, Africa

France

Baudemont

Cergy

Decines

Germany

Langenfeld

Italy

Lainate

Netherlands

Breda

Poland

Warsaw

Portugal

Baltar

Russia

Moscow

South Africa

Johannesburg

U.A.E.

Dubai

U.K.

Buckingham

China

Beijing

Chengdu

Guangzhou

Xian

Greater Asia-Pacific

Australia

Brisbane

Melbourne

Sydney

India

Chennai

Delhi

Hyderabad

Pune

Korea

Seoul

Philippines

Makati City

Singapore

Factories

Brazil

Passo Fundo

China

TaiAn

Zhangjiagang

France

Charlieu

Moulins

Germany

Wilhelmshaven

India

Pune

Italy

Niella Tanaro

Portugal

Baltar

Fânzeres

Slovakia

Saris

USA

Maniowoc

Port Washington

Shady Grove

This document is non-contractual. Constant improvement and engineering progress make it necessary that we reserve the right to make specification, equipment, and price changes without notice. Illustrations shown may include optional equipment and accessories and may not include all standard equipment.

