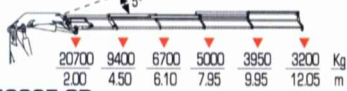
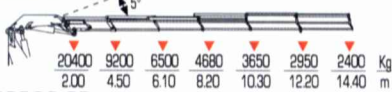




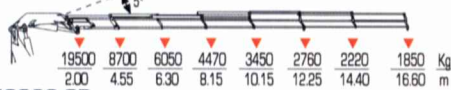
48024 SP



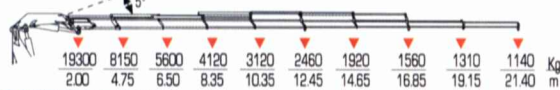
48025 SP



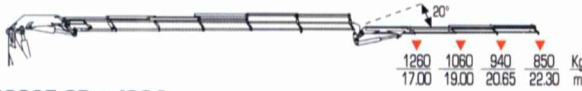
48026 SP



48028 SP



48025 SP + J903



48025 SP + J904



48026 SP + J703



New!



	tm	kNm	l/min	Mpa
48024 SP	42,3	415	80	29,5
48025 SP	41,4	406	80	29,5
48026 SP	39,6	388	80	29,5
48028 SP	38,7	380	80	29,5
48025 SP + J903	-	-	80	25,5
48025 SP + J904	-	-	80	25,5
48026 SP + J703	-	-	80	25,5

•
continuo
continuos
continuo
endlos
continuo

kg	ST	LC				
4870	5030	2495	2500	1364	48024 SP	
5100	5260	2495	2500	1364	48025 SP	
5300	5460	2495	2500	1364	48026 SP	
5630	5790	2495	2500	1364	48028 SP	
6080	6240	2495	2500	1364	48025 SP + J903	
6160	6320	2495	2500	1364	48025 SP + J904	
6060	6220	2495	2500	1364	48026 SP + J703	