



**TRUCK CRANE**

# GT-600EX

60 METRIC TON CAPACITY



# Total Performance

# GT-600EX

## Key specifications

1 : Crane capacity  
60,000 kg

2 : 5-section long boom  
43.0 m

3 : 2-section bi-fold jib  
8.8 & 15.2 m

4 : Strong winches  
5,600kgf

5 : Easy operation

6 : New safety suggestion  
TADANO New AML-C

7 : High speed travelling  
84km/h

8 : Smooth driving  
Hyd. suspension

bi-fold Jib  
length 8.8m / 15.2m

Boom length 43m  
Round shape construction

2 winches  
with cable follower



2-man full width cabin

Hi Performance ENGINE:  
EURO-3  
Daimler OM457LA  
Max. Output 260kW  
Max. Torque 1,850N-m

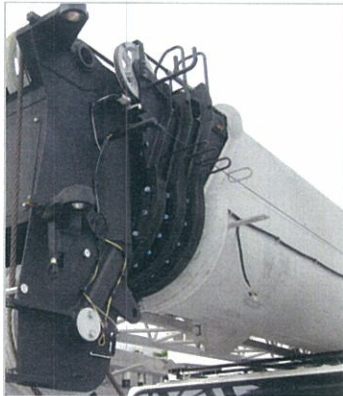
Hydraulic/pneumatic  
suspension on all axes



# Crane

# GT-600EX

## Full power round shape boom

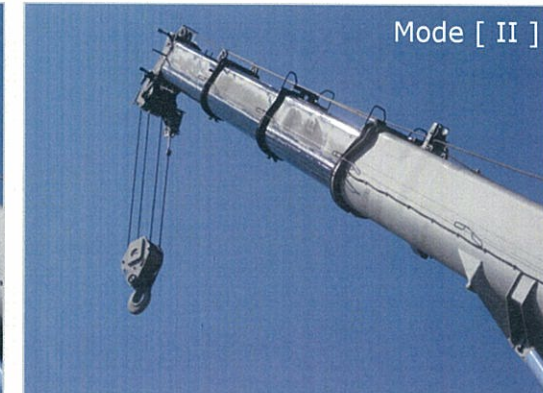


Max. length 43.0m  
Tadano new design 5-section round shape booms are lighter and stronger and have been designed to provide minimal deflection while reducing unnecessary weight. Single lever operation ensures smooth full power boom extension and retraction.

## 2-telescoping modes [I] & [II]



**Mode [I]** is extension of 2<sup>nd</sup> section only. Then synchronized extension of 3<sup>rd</sup>, 4<sup>th</sup> and 5<sup>th</sup> section.



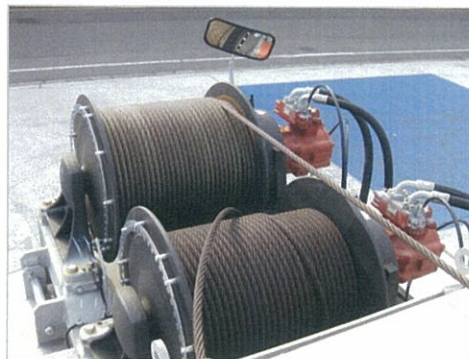
**Mode [II]** is synchronized extension of 3<sup>rd</sup>, 4<sup>th</sup> and 5<sup>th</sup> sections. Then 2<sup>nd</sup> section independently.

## Efficient winch design

Variable speed winches offer independent or simultaneous operation. Single line pull 5.6t

The wide diameter grooved winch drums are equipped with cable followers.

[Cable follower]



[Main & Aux. winch with a mirror]

## Hydraulic Pumps



Big capacity for high grade crane operation.

2 variable piston pumps  
and  
2 gear pumps

## Hydraulic Oil Cooler

A remote mounted hydraulic oil cooler has a thermostatically controlled hydraulically driven fan motor.



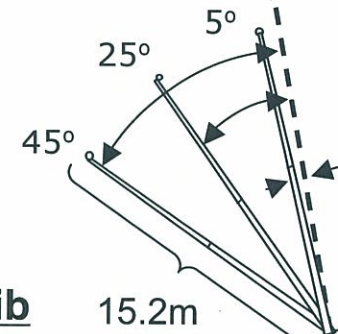
# Crane

# GT-600EX

## bi-fold Fly jib

Extra reach is provided by a two stage bi-fold lattice type jib that stows alongside the base boom section and features self stowing jib mounting pins.

When erected, the jib may be offset either 5° or 25° or 45° from the main boom center line, thus increasing operating range.



## Assist cylinder for Jib

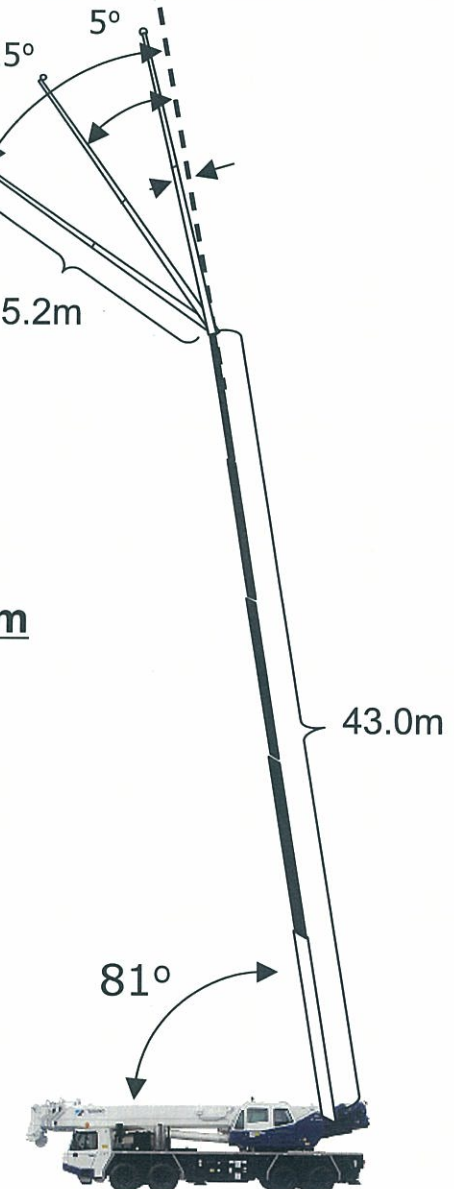
This crane is equipped with an assist cylinder that provides quick and easy Jib erection.



**Jib assist cylinder control switch**



## 5 sections boom

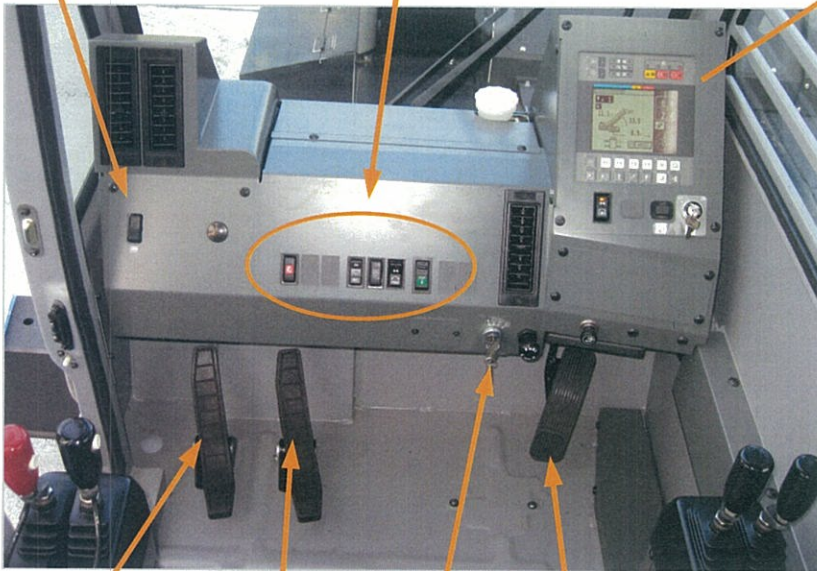


# Crane

# GT-600EX

**Power window switch**

**Crane control Switch's**



**Boom tele. control pedal**

**Boom elevating control pedal**

**Start switch**

**Accelerator pedal**

## Air Condition

Hot water heater and air conditioning



## AML (Automatic Moment Limiter)

AML electrically detects boom elevation cylinder pressure, boom angle, boom length and the extended length of each outrigger, enabling the AML to monitor and control steeples lifting capacity changes.

## Displayed outrigger status

Each outrigger is equipped with an outrigger extension length detector and the actual outrigger condition is displayed on the AML.



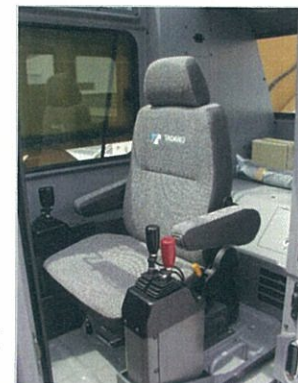
## Hydraulic control levers

Multiple valves actuated by pilot Pressure with integral pressure relief valves. Control lever stands can change neutral positions and tilt back for easy access to cab



## Seat

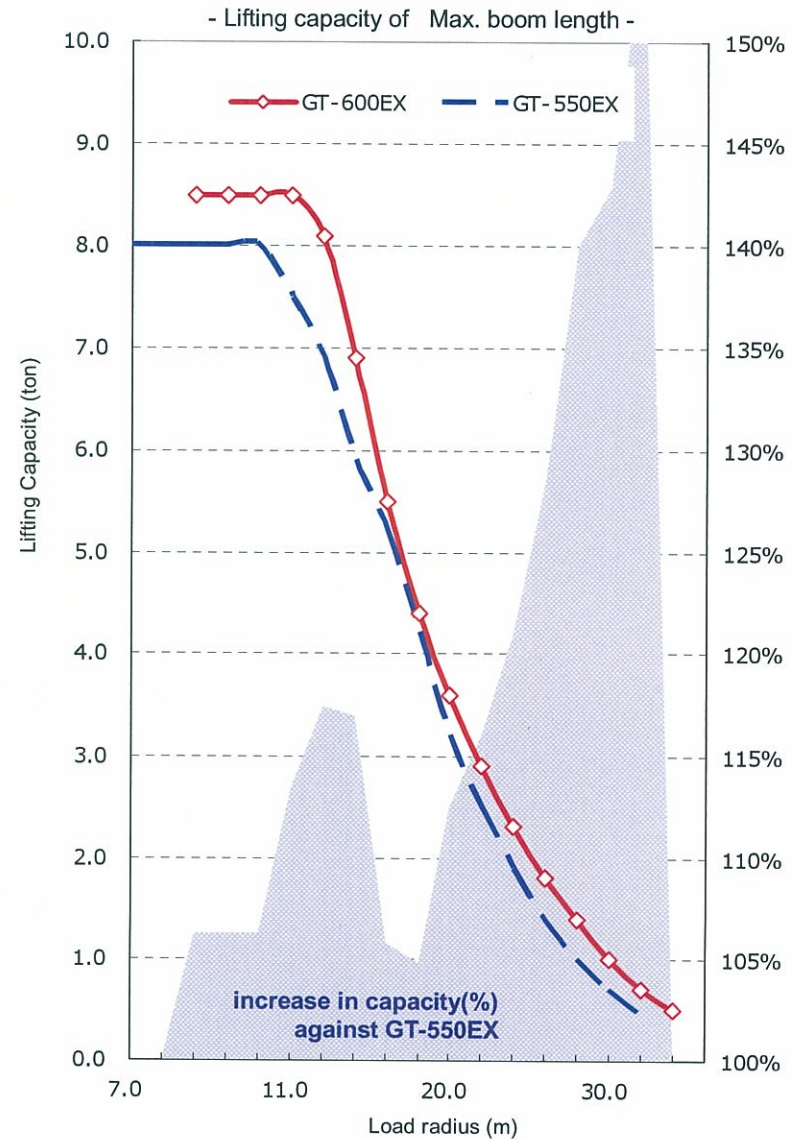
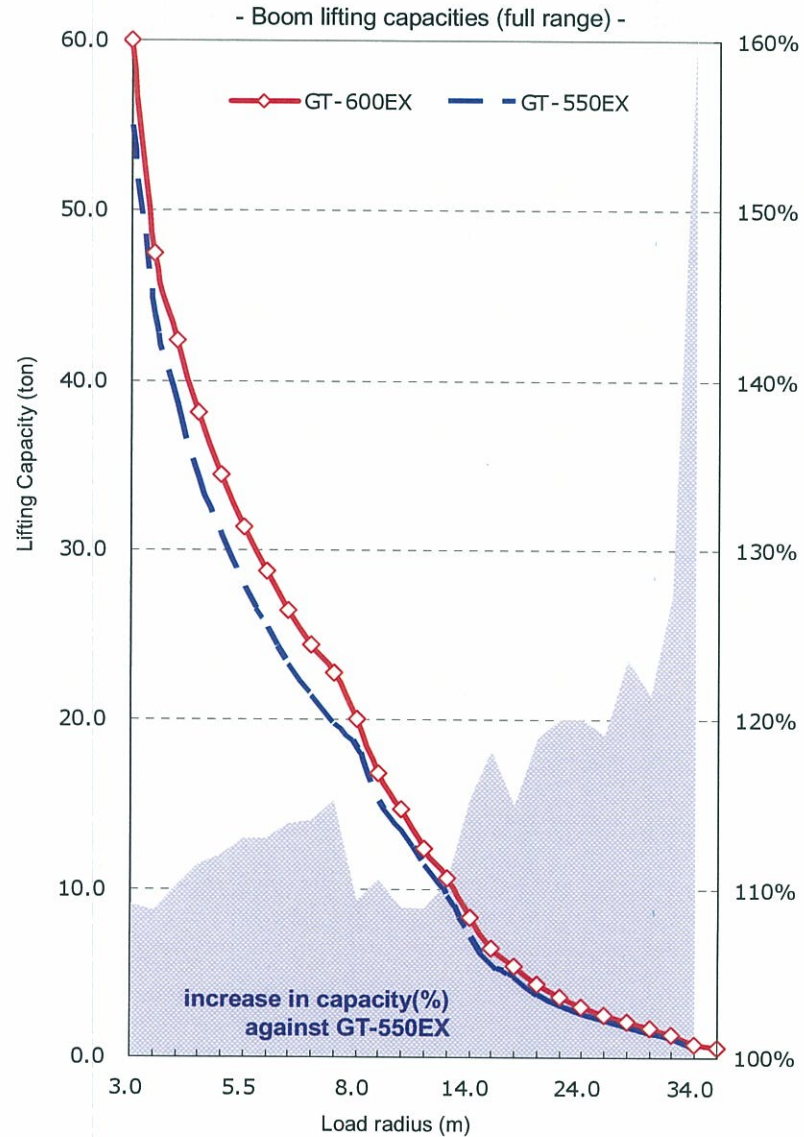
Operator's 3 way adjustable seat with headrest and armrest



# Lifting Performance

# GT-600EX

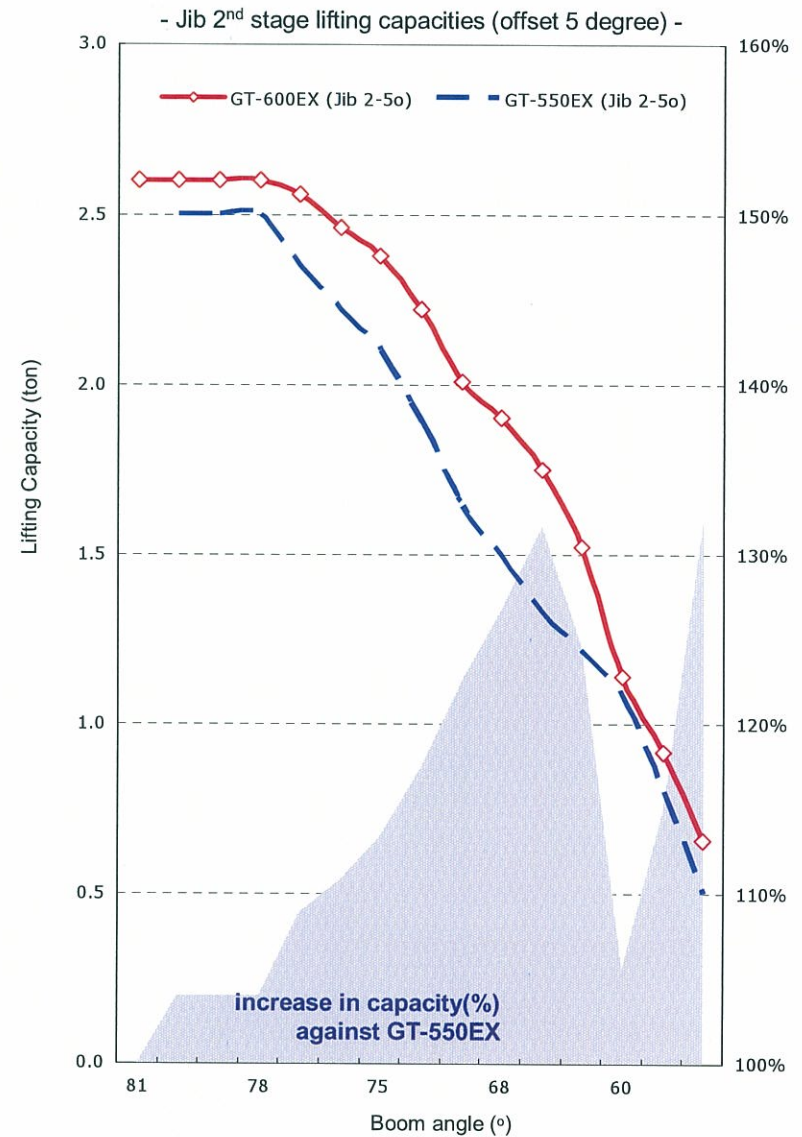
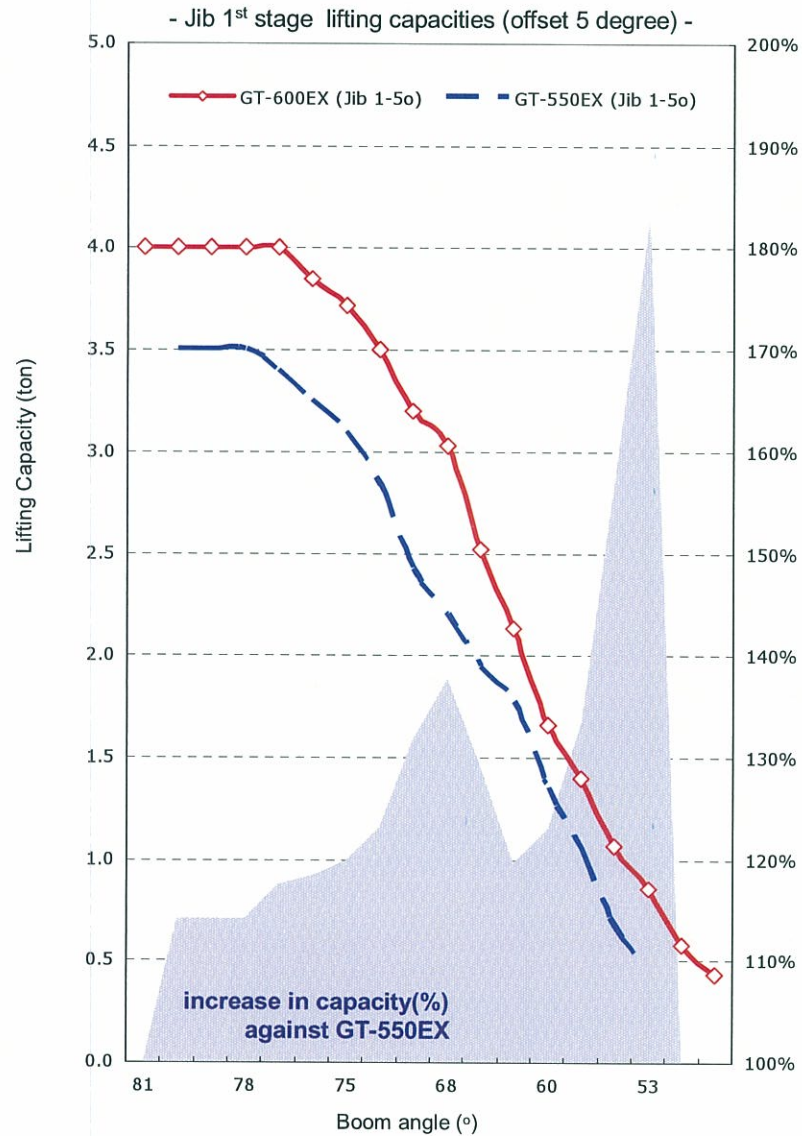
## GT-600EX vs. GT-550EX



# Lifting Performance

# GT-600EX

## GT-600EX vs. GT-550EX

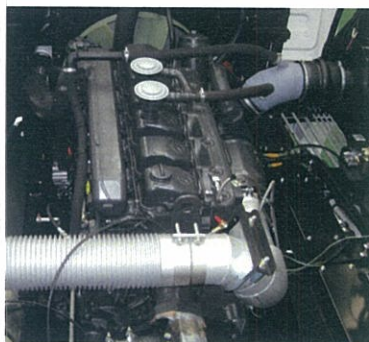


## TADANO New designed carrier for truck crane



### Maximum travelling speed 84 km/h

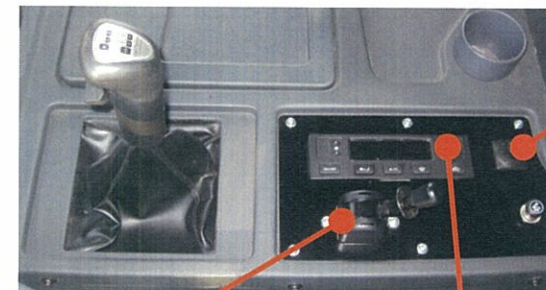
- Daimler Engine + 9 forward speeds T/M



Hi Performance Engine: [EURO 3]  
Daimler OM457LA  
4cycle, turbo charged and inter cooled  
Max. output 260kW {353PS}  
Max. torque 1,850Nm {188kgf-m}

Max. torque 26.7% UP  
(compare GT-550EX)

[ 9 forward speeds T/M ]



Parking brake lever

Air conditioner control

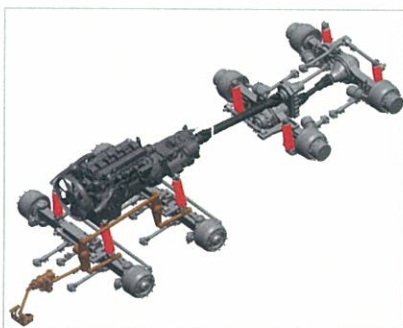
Mirrors adjustment



## Hydraulic suspension



The chassis is equipped with the hydraulic suspension system whose outstanding performance has already been proven in a series of Tadano all terrain and rough terrain cranes. The system ensures great stability even when driving at high speeds.

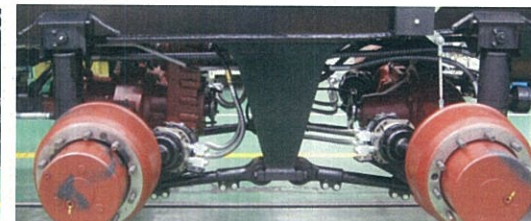


8 hydraulic cylinders on 4 axles

[ Front axles ]



[ Rear axles ]



# Carrier

# GT-600EX

## 2-Man full width cabin

The faun designed 2-man full width cabin of steel structure.  
With adjustment and heating rear view mirror on left and right.

Adjustment & heating mirror



Tilting-telescoping steering wheel

Adjustable and Air-suspended seats

