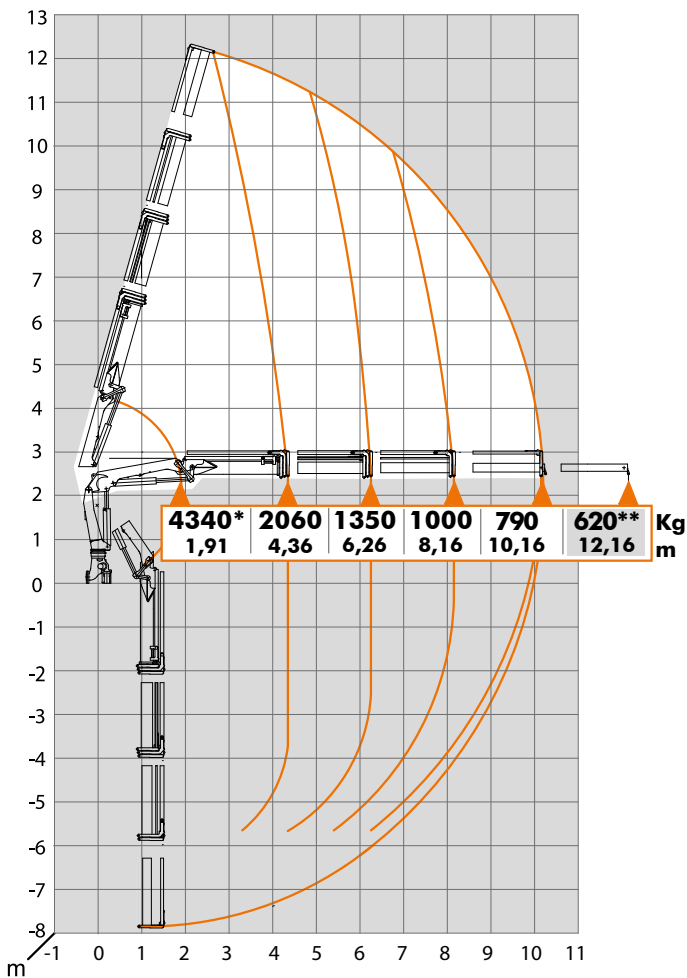


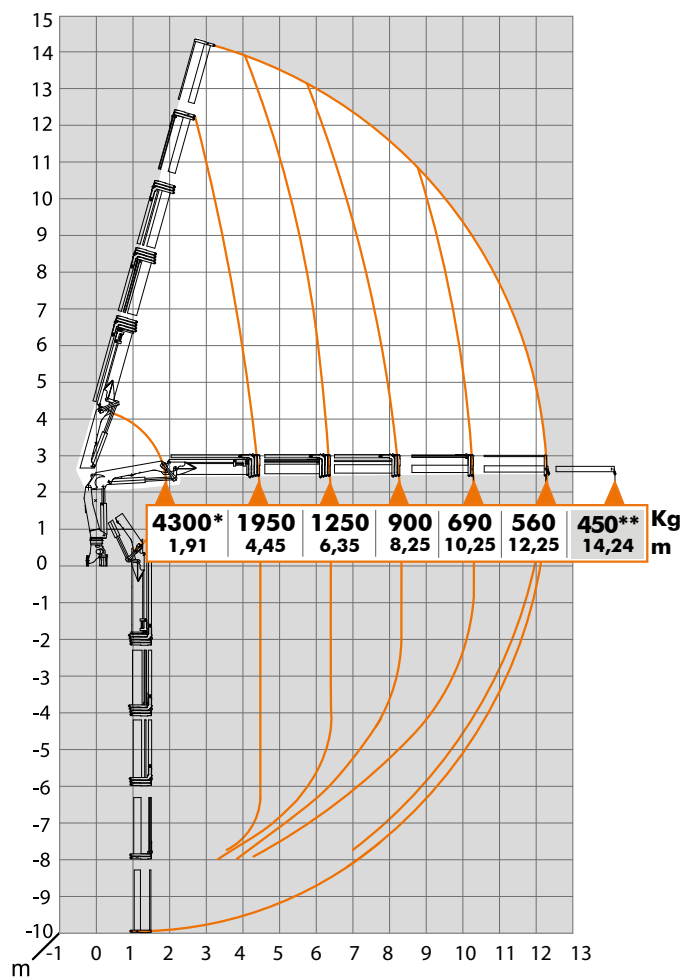
AK 96.3E

A3L-10,2/3/V103



AK 96.3E

A4L-12,3/4/V104



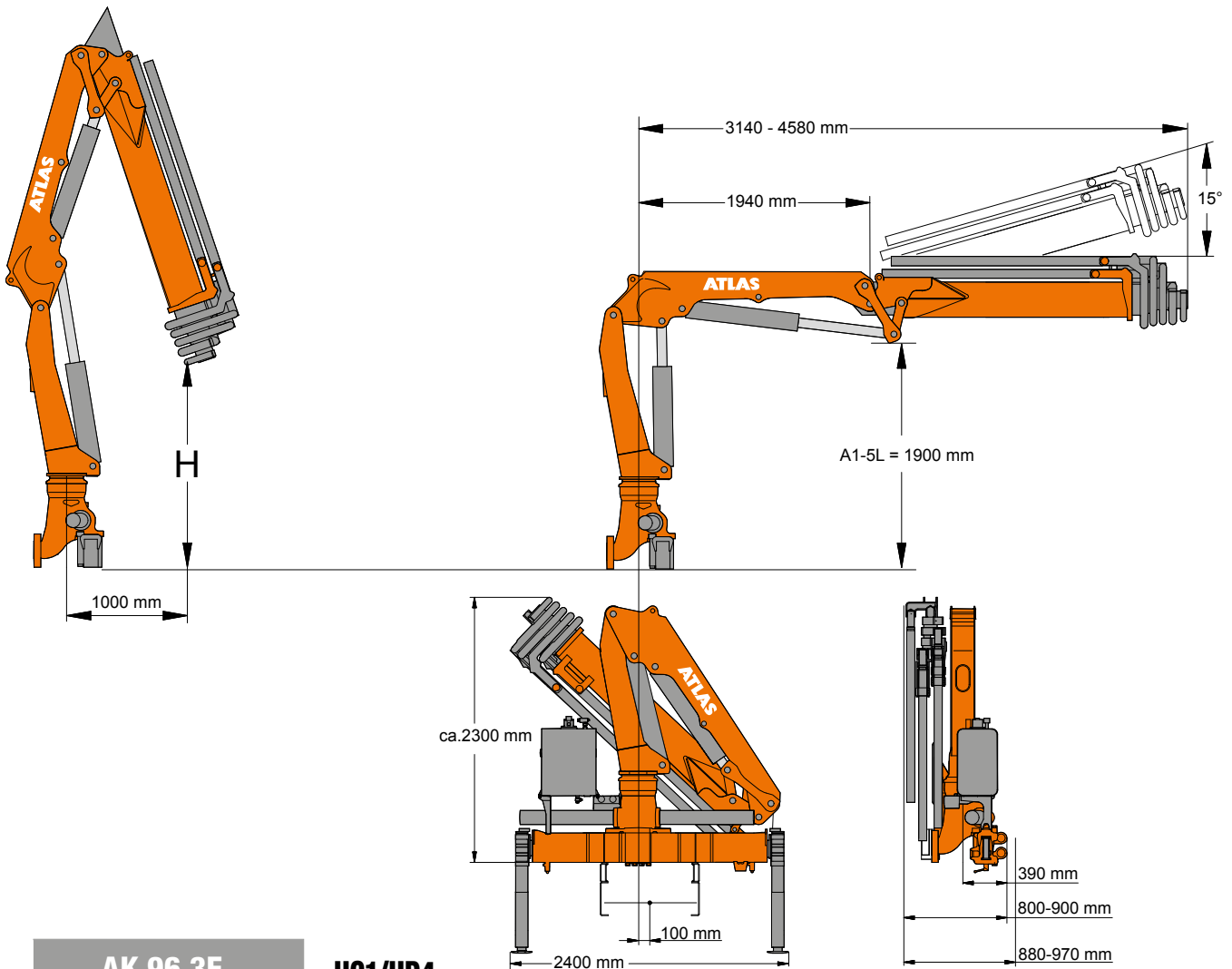
Hubarmstellung 10° / Boom position 10°

Kg - Traglast/lifting capacity in "Kg"
m - Mass/measurement in "m"

****** - Optional { Manuelle Verlängerung
 Manual extension








***** - - - - - { zusätzlicher Lasthakenpunkt am Knickarm
 additional load hook point at jib


ABMESSUNGEN / Dimensions



AK 96.3E

HC1/HD4

Typ	Gewicht ohne Abstützungsverbreiterungen und Stützbeine Weight without stabilizer extensions and stabilizer legs	H	Betriebsdruck Operating pressure	Ölfördermenge Oil supply amount	Schwenkbereich Swivel range	Schwenkmoment Swivel moment	Hubmoment Lifting moment
							
	Kg	m	bar	l/min		kNm	kNm
A1	1275	3,60					96,1
A2	1365	3,68					93,8
A3	1485	3,75					91,2
A1SL	1230	3,11					96,7
A2SL	1325	3,19					94,8
A3SL	1405	3,26	300	35	410°	18,1	92,7
A1L	1335	4,21					95,0
A2L	1445	4,28					91,1
A3L	1575	4,36					88,1
A4L	1675	4,45					85,1
A5L	1760	4,50					83,4

 einfaches Grundgerät im Lasthakenbereich / simple basic unit for loadhook work