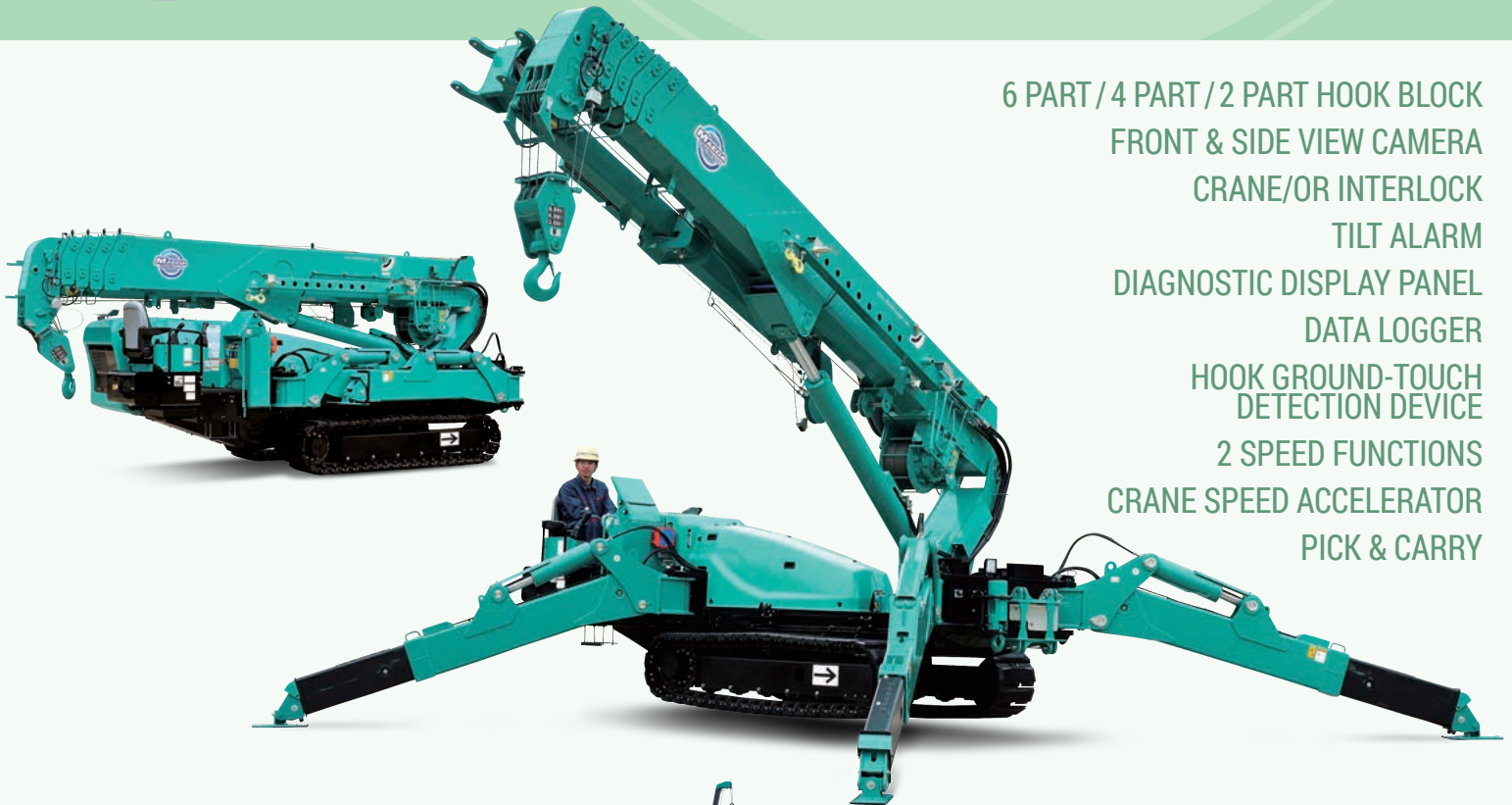




MINI CRAWLER CRANE

MC815C

17,800 lb.
Maximum Capacity



6 PART / 4 PART / 2 PART HOOK BLOCK
FRONT & SIDE VIEW CAMERA
CRANE/OR INTERLOCK
TILT ALARM
DIAGNOSTIC DISPLAY PANEL
DATA LOGGER
HOOK GROUND-TOUCH
DETECTION DEVICE
2 SPEED FUNCTIONS
CRANE SPEED ACCELERATOR
PICK & CARRY



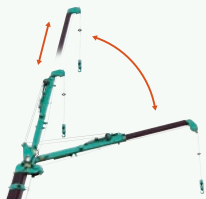
Programmable Moment Limiter (Touchscreen)



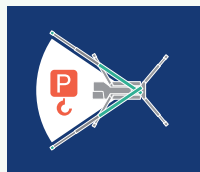
Joystick Radio Remote Control



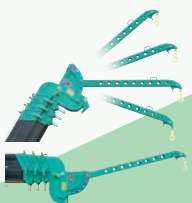
Electric Motor Power [Inverter System] (Option)



Hydraulic Fly Jib (Option)



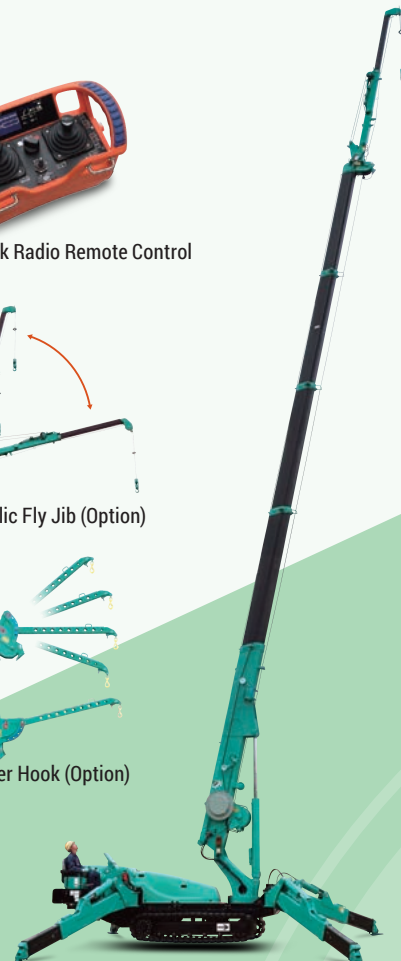
Power Lifting Mode



Searcher Hook (Option)



Multi Outrigger Lifting Mode



Specifications

| Model | | MC815C |
|-----------------------------|---------------------------|--|
| Maximum Capacity | | 17,800lb (8,090kg) |
| Maximum Working Radius | | 61.6' |
| Maximum Lifting Height | | 64.3' - 83.6' w/ Fly Jib |
| Hook Speed | | 67.5'/min 6 Part/4th Layer |
| Hoist Rope | | IWRC 6 x Fi(29) 10mm x 492' |
| Boom System | Type | Automatic 5 Section, Pentagonal Telescopic |
| | Length | 18.11' - 63.65' |
| | Telescopic Stroke / Speed | 18.11' - 63.65' / 52.0 sec |
| Boom Hoist Angle / Speed | | 0° - 80° / 22.9 sec |
| Swing Radius / Speed | | 360° / 2.0 RPM |
| Travel Crawler System | Drive | Hydraulic Motor, Stepless Speed Changer |
| | Travel Speed | 0 - 1.99 mph |
| | Gradability | 23° Design Limit 15° Set Limit |
| | Ground Pressure | 7.54 PSI Diesel Model 7.68 PSI Electric Dual Power Model |
| Engine | Type | Yanmar 4TNV88C-NMB 4 Cycle, 4 Cylinder, Water Cooled |
| | Rated Output | 40.9 hp / 2400 min ⁻¹ , 41.5 ps / 2400 RPM |
| | Fuel Tank | 18.4 Gallon |
| Electric Motor (Dual Power) | Type | Totally Enclosed Fan Cooled Motor |
| | Size | 15.0 kw, 4P, 230V, 3 phase, Inverter 30 hz - 60 hz |
| Remote Control (wireless) | | Wireless Remote Control, Travel, Outrigger & Crane Operation, Graduated Micro Speed, Load & Rated Load LCD Display |
| Dimensions | Stowed L x W x H | L 20'4" x W 5'9" x H 8'2" |
| Net Weight | | Diesel Model 20,860 lb. Electric Dual Power +530 lb. Fly Jib +1,080 lb. Rubber pads +485lb. |
| Optional Equipment | | Rubber Pads, Single Part Ball / Hook, Custom Paint Color, Searcher Hook 2,300lb (1,060kg) Fly jib 3,300lb (1,520kg) Pick and Carry 2,400lb (1,090kg) |

Rated Total Load Chart

(lb)

| MAXIMUM Outriggers, 6 Part Line | | | | | | | | | | |
|---------------------------------|--------------|--------|--------------|--------|--------------|--------|--------------|--------|--------------|--------|
| Boom Length | 18.11ft boom | | 29.49ft boom | | 40.88ft boom | | 52.26ft boom | | 63.65ft boom | |
| Radius (ft.) | N mode | P mode | N mode | P mode | N mode | P mode | N mode | P mode | N mode | P mode |
| 7.9 | 17800 | 17800 | 14000 | 14000 | 10300 | 10300 | | | | |
| 8.2 | 16900 | 16900 | 14000 | 14000 | 10300 | 10300 | 7400 | 7400 | | |
| 9.8 | 14000 | 14000 | 14000 | 14000 | 10300 | 10300 | 7400 | 7400 | | |
| 11.5 | 12100 | 12100 | 12100 | 12100 | 10300 | 10300 | 7400 | 7400 | 5200 | 5200 |
| 13.1 | 10500 | 10500 | 10500 | 10500 | 10300 | 10300 | 7400 | 7400 | 5200 | 5200 |
| 14.8 | 9200 | 9200 | 9200 | 9200 | 9000 | 9000 | 7400 | 7400 | 5200 | 5200 |
| 16.1 | 8300 | 8300 | 8300 | 8300 | 8100 | 8100 | 7400 | 7400 | 5200 | 5200 |
| 16.4 | | | 8300 | 8300 | 8100 | 8100 | 7400 | 7400 | 5200 | 5200 |
| 19.7 | | | 7000 | 7000 | 6800 | 6800 | 6100 | 6100 | 5200 | 5200 |
| 23.0 | | | 5900 | 5900 | 5700 | 5700 | 5200 | 5200 | 4300 | 4300 |
| 26.2 | | | 5000 | 5000 | 4600 | 4600 | 4600 | 4600 | 3700 | 3700 |
| 27.5 | | | 4600 | 4600 | 4100 | 4300 | 4100 | 4300 | 3500 | 3500 |
| 29.5 | | | | | 3700 | 4100 | 3700 | 4100 | 3200 | 3200 |
| 32.8 | | | | | 2800 | 3200 | 2800 | 3200 | 2800 | 3000 |
| 36.1 | | | | | 2200 | 2600 | 2200 | 2600 | 2200 | 2600 |
| 38.9 | | | | | 1900 | 2200 | 1900 | 2200 | 1900 | 2200 |
| 39.4 | | | | | | | 1900 | 2200 | 1900 | 2200 |
| 42.7 | | | | | | | 1800 | 2100 | 1800 | 2100 |
| 45.9 | | | | | | | 1600 | 1800 | 1600 | 1800 |
| 49.2 | | | | | | | 1400 | 1600 | 1400 | 1600 |
| 50.3 | | | | | | | 1300 | 1500 | 1300 | 1500 |
| 52.5 | | | | | | | | | 1300 | 1500 |
| 55.8 | | | | | | | | | 1000 | 1300 |
| 59.1 | | | | | | | | | 900 | 1100 |
| 61.7 | | | | | | | | | 700 | 900 |

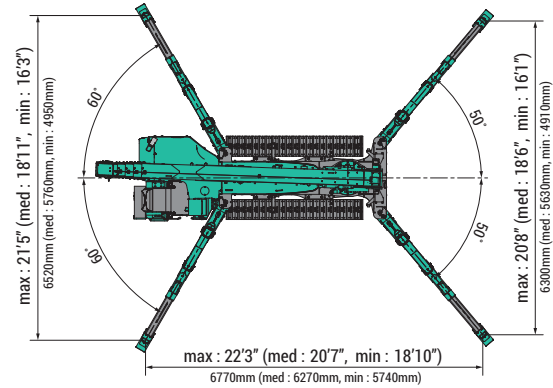
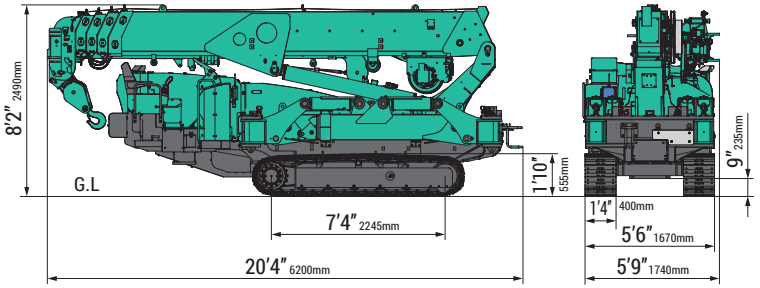
| MEDIUM Outriggers, 6 Part Line | | | | | | | | | | |
|--------------------------------|--------------|--------|--------------|--------|--------------|--------|--------------|--------|--------------|--------|
| Boom Length | 18.11ft boom | | 29.49ft boom | | 40.88ft boom | | 52.26ft boom | | 63.65ft boom | |
| Radius (ft.) | N mode | P mode | N mode | P mode | N mode | P mode | N mode | P mode | N mode | P mode |
| 7.9 | 13800 | 13800 | 13800 | 13800 | 10100 | 10100 | | | | |
| 8.2 | 13800 | 13800 | 13800 | 13800 | 10100 | 10100 | 7200 | 7200 | | |
| 9.8 | 13800 | 13800 | 13800 | 13800 | 10100 | 10100 | 7200 | 7200 | | |
| 11.5 | 11600 | 11600 | 11600 | 11600 | 10100 | 10100 | 7200 | 7200 | 5000 | 5000 |
| 13.1 | 10100 | 10100 | 10100 | 10100 | 10100 | 10100 | 7200 | 7200 | 5000 | 5000 |
| 14.8 | 8700 | 8700 | 8700 | 8700 | 8700 | 8700 | 7200 | 7200 | 5000 | 5000 |
| 16.1 | 8100 | 8100 | 8100 | 8100 | 8100 | 8100 | 7200 | 7200 | 5000 | 5000 |
| 16.4 | | | 7900 | 7900 | 7900 | 7900 | 7200 | 7200 | 5000 | 5000 |
| 19.7 | | | 6500 | 6500 | 6500 | 6500 | 5900 | 5900 | 5000 | 5000 |
| 23.0 | | | 4600 | 4800 | 4600 | 4600 | 4600 | 4600 | 4300 | 4300 |
| 26.2 | | | 3700 | 3900 | 3700 | 3900 | 3700 | 3700 | 3700 | 3700 |
| 27.5 | | | 3200 | 3500 | 3200 | 3500 | 3200 | 3200 | 3200 | 3200 |
| 29.5 | | | | | 3000 | 3200 | 3000 | 3200 | 3000 | 3000 |
| 32.8 | | | | | 2100 | 2400 | 2100 | 2400 | 2100 | 2400 |
| 36.1 | | | | | 1700 | 1900 | 1700 | 1900 | 1700 | 1900 |
| 38.9 | | | | | 1300 | 1500 | 1300 | 1500 | 1300 | 1500 |
| 39.4 | | | | | | | 1300 | 1500 | 1300 | 1500 |
| 42.7 | | | | | | | 1000 | 1300 | 1100 | 1400 |
| 45.9 | | | | | | | 900 | 1100 | 1000 | 1300 |
| 49.2 | | | | | | | 800 | 1000 | 900 | 1100 |
| 50.3 | | | | | | | 700 | 900 | 800 | 1000 |
| 52.5 | | | | | | | | | 800 | 1000 |
| 55.8 | | | | | | | | | 700 | 800 |
| 59.1 | | | | | | | | | 600 | 700 |
| 61.7 | | | | | | | | | 500 | 600 |

| MINIMUM Outriggers, 6 Part Line | | | | | | | | | | |
|---------------------------------|--------------|--------|--------------|--------|--------------|--------|--------------|--------|--------------|--------|
| Boom Length | 18.11ft boom | | 29.49ft boom | | 40.88ft boom | | 52.26ft boom | | 63.65ft boom | |
| Radius (ft.) | N mode | P mode | N mode | P mode | N mode | P mode | N mode | P mode | N mode | P mode |
| 7.9 | 13600 | 13600 | 13600 | 13600 | 10100 | 10100 | | | | |
| 8.2 | 13600 | 13600 | 13600 | 13600 | 10100 | 10100 | 6800 | 6800 | | |
| 9.8 | 13600 | 13600 | 13600 | 13600 | 10100 | 10100 | 6800 | 6800 | | |
| 11.5 | 11600 | 11600 | 11600 | 11600 | 10100 | 10100 | 6800 | 6800 | 4800 | 4800 |
| 13.1 | 10100 | 10100 | 10100 | 10100 | 10100 | 10100 | 6800 | 6800 | 4800 | 4800 |
| 14.8 | 8700 | 8700 | 8700 | 8700 | 8700 | 8700 | 6800 | 6800 | 4800 | 4800 |
| 16.1 | 6800 | 6800 | 6800 | 6800 | 6800 | 6800 | 6800 | 6800 | 4800 | 4800 |
| 16.4 | | | 6800 | 6800 | 6800 | 6800 | 6800 | 6800 | 4800 | 4800 |
| 19.7 | | | 4800 | 5000 | 4800 | 4800 | 4800 | 4800 | 4800 | 4800 |
| 23.0 | | | 3200 | 3500 | 3200 | 3500 | 3200 | 3200 | 3200 | 3200 |
| 26.2 | | | 2600 | 2800 | 2600 | 2800 | 2600 | 2800 | 2600 | 2600 |
| 27.5 | | | 2400 | 2600 | 2400 | 2600 | 2400 | 2600 | 2400 | 2400 |
| 29.5 | | | | | 2100 | 2400 | 2100 | 2400 | 2100 | 2400 |
| 32.8 | | | | | 1500 | 1700 | 1500 | 1700 | 1500 | 1700 |
| 36.1 | | | | | 1000 | 1300 | 1000 | 1300 | 1100 | 1400 |
| 38.9 | | | | | 800 | 1000 | 800 | 1000 | 1000 | 1300 |
| 39.4 | | | | | | | 800 | 1000 | 1000 | 1300 |
| 42.7 | | | | | | | 700 | 900 | 900 | 1100 |
| 45.9 | | | | | | | 600 | 800 | 800 | 1000 |
| 49.2 | | | | | | | 500 | 700 | 700 | 900 |
| 50.3 | | | | | | | 500 | 600 | 600 | 800 |
| 52.5 | | | | | | | | | 600 | 800 |
| 55.8 | | | | | | | | | 500 | 600 |
| 59.1 | | | | | | | | | 400 | 500 |
| 61.7 | | | | | | | | | 300 | 400 |

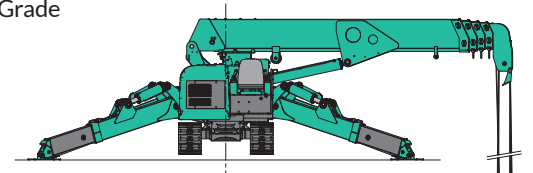
The Rated Total Load is based on the actual working radius including boom deflection. Due to wire rope strength and other limitations, when using four part, two part or single part hooks use the appropriate six part Rated Total Load Chart above but with maximum load of:

Four Part - 13,400 lb. Two Part - 6,800 lb. Single Part - 3,500 lb.

This Rated Total Load Chart is supplied for reference only. Operator and all personnel must refer to the actual crane Rated Total Load Chart to determine allowable machine lifting and operating procedures. We are constantly improving our products and reserve the right to change design and specifications at any time.



MAX. Reach Below Grade



Working Range Chart (4Parts)

