

XCR60_U Rough Terrain Crane

Technical specifications



60USt



143.0ft



187.3ft

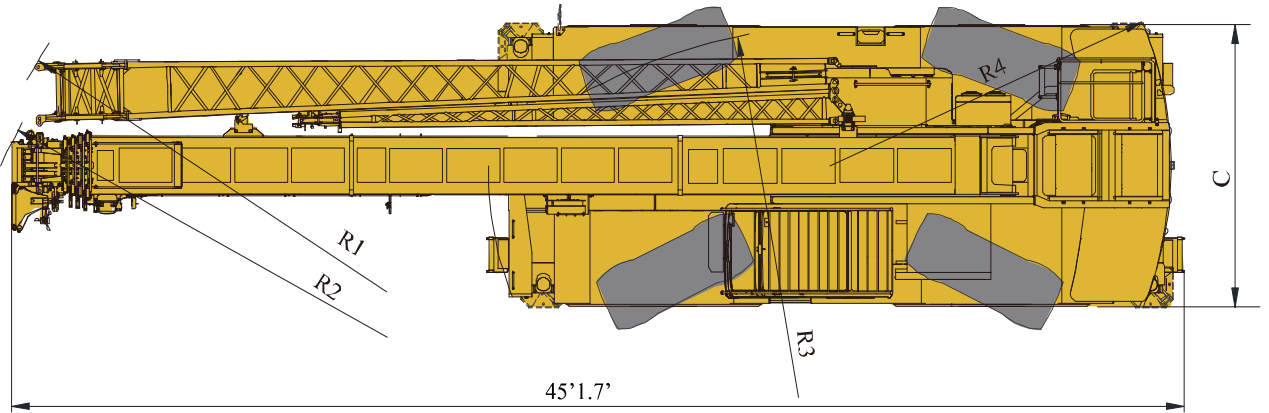
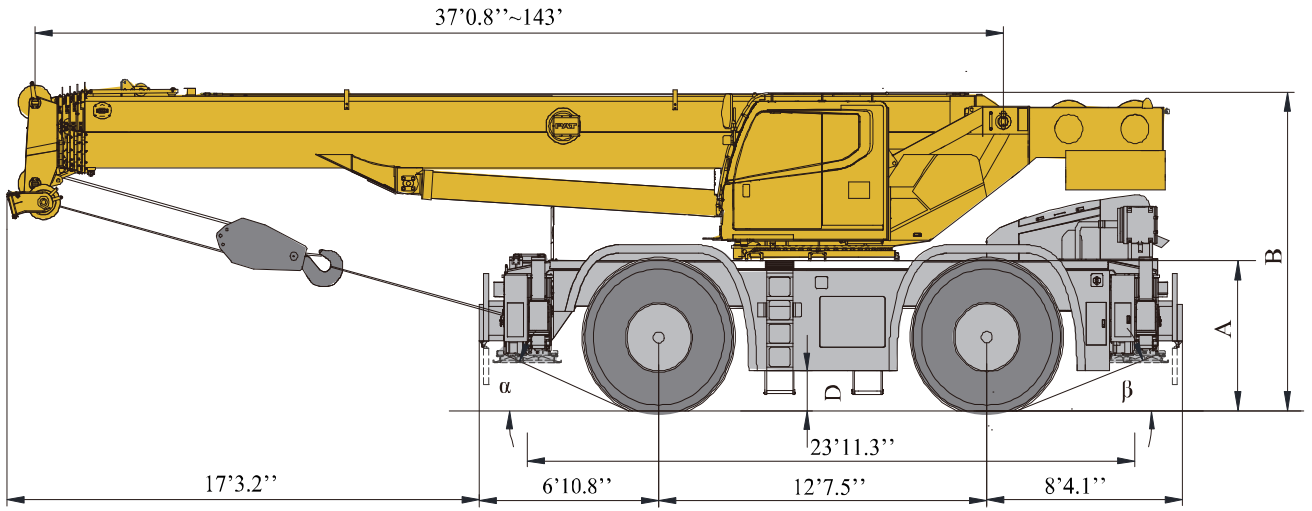


Contents

Contents


Dimensions	2
Technical specifications	3
Weight / Working speeds	4
Counterweight	5
Boom / Jib combinations	6-7
Boom	8-9
Jib	10-11
Description of symbols	12
Table of main technical parameters	13-14
Notes	15

Dimensions



	α	β	A	B	C	D	R1	R2	R3	R4
23.5R25	26°	20.5°	5'3.4''	11'9.3''	9'10.1''	1'5.5''	35'5.9''	34'11.1''	19'8.2''	13'7.7''

Technical specifications

		
Boom	1 basic boom and 4-telescoping sections, U-shape cross section welding structure. Double cylinder plus ropes telescoping mechanism. 6 pulleys on boom head are standard. Boom length:37.1ft ~ 143.0ft.	●
Jib	Two-section lattice structure. Three offset angles of 0° , 15° and 30° are available. It is stowed along the side of the boom. Jib length: 30.2ft~52.5ft.	●
Frame	Made of high strength fine grained steel, welded torsion-resistant frame type construction with large cross-section, high load-bearing capacity.	●
Outrigger	4outriggers, H-shaped arrangement, which are controlled by electrical and hydraulic and located at both sides of chassis frame.	●
Engine	QSB6.7,in line, six-cylinder water-cooled compression ignition diesel engine, manufactured by Cummins, with rated power of 260/2200(bhp/rpm), max. torque of 730/1500(lb.ft/rpm), U.S. EPA Tier 4F emission standard compliant Fuel tank capacity: approx. 80.6gal	●
Gearbox	6WG210, automatic transmission from ZF Germany, with 6 forward and 3 reverse gears	●
Axles	Both front and rear axles are for driving and steering, and the axles have features of great load bearing capacity.	●
Suspension	Front axle is rigidly connected with frame; rear axle is equipped with swing hydraulic suspensions, which have cushioning function when driving on roads; the rear suspension cylinder may be locked to rigid state so as to meet the requirement for travel with a load suspended, increasing operation stability.	●
Tires	4 specialized off-road, large bearing capacity. Tire specifications: 23.5R25.	●
Steering	Front axle independent steering, tight turning radius steering, crab walk steering and rear axle independent steering modes are available. The steering angle can be self-adjusted when changing mode.	●
Brakes	Service brake: double-circuit hydraulic disc brake, acting on all wheels. Automatically braking and alarm are available when the pressure in braking system is too low. Parking brake: spring-loaded brake, acting on front axles, hydraulic-released independent disc brake.	●

Hydraulic system	A dual-variable displacement pump, used for hoisting, elevating and telescoping operations, and a gear pump, used for slewing, outrigger, steering and braking operations; a load sensitive proportional multi-way change valve is used as main valve; an independent hydraulic oil radiator. Tank capacity: approx. 228gal.	●
Operating mode	Hydraulic controlled pilot operation system is equipped with two levers controlling the main movements of the crane.	●
Electrical System	24 V DC, two sets of 12 V battery in series.	●
Main and auxiliary winch system	The system is driven by a hydraulic motor through a planetary gear reducer, with a normally closed brake and a balance valve equipped.	●
Slewing system	Single-row four-point ball contact slewing ring, driven by a hydraulic motor through planetary gear reducer, and with a normally closed brake fitted.	●
Operator's cab	Tilttable cab, with sliding door and adjustable seat equipped. It is equipped with safe glass and roof protective grille. Sun shade is available for windshield and roof window. Heater and air conditioner, radio, 12 V and 24 V DC outlets are standard.	●
Safety devices	Hydraulic balance valve, hydraulic relief valve, hydraulic double-way valve and LMI. Lowering limiter is equipped in winch to prevent rope over-releasing. Anti-two block is fitted on the boom head to prevent rope over-winding.	●
Counterweight	The counterweight weight is 16535lb	●
Hook Block	60USt hook , 5.5USt hook block	●

Product parts list is as mentioned above. Please refer to the product quotation for specific parts.

Symbol explanation:

- —it means the standard configuration;
- —it means the optional configuration.

Weight



Axle	Front Axle	Rear Axle	Gross vehicle weight
lb	46746	45406	92152



Hook	No. of lines	Weight (lb)	Remarks
60USt	12	1151	Single hook
5.5USt	1	220	Single hook

Working speeds

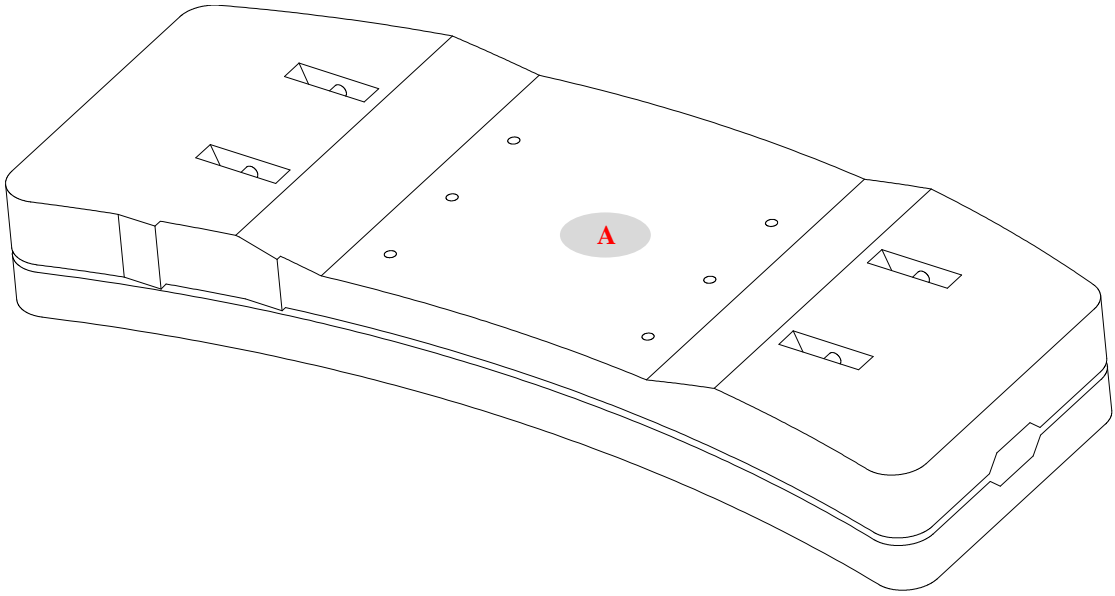


23.5 R 25	21.7	86%
-----------	------	-----



Drive	Working speed	Max. single line pull	Rope diameter/ length
	0-492 ft/min, no load, 4th layer	11473lb	0.7085in/629.8ft
	0-426 ft/min, no load, 4th layer	11473lb	0.7085in/426.4ft
	0-1.5r/min		
	Approx. 45s for boom elevation from -1.5° to 80°		
	Approx. 80s for boom extension from 37.1ft to 143.0ft		

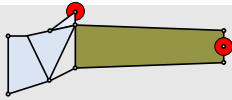
Counterweight



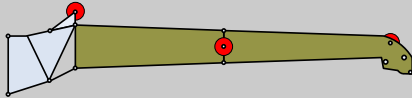
Counterweight	A
Size (L×W×H) ft	9.8×4.1×1.2
Weight lb	16535

Boom / Jib combinations

Jib – 30.2ft



Jib – 52.5ft



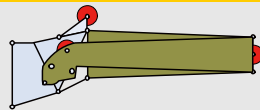
Component

Structure

Size (L×W×H) ft

Weight lb

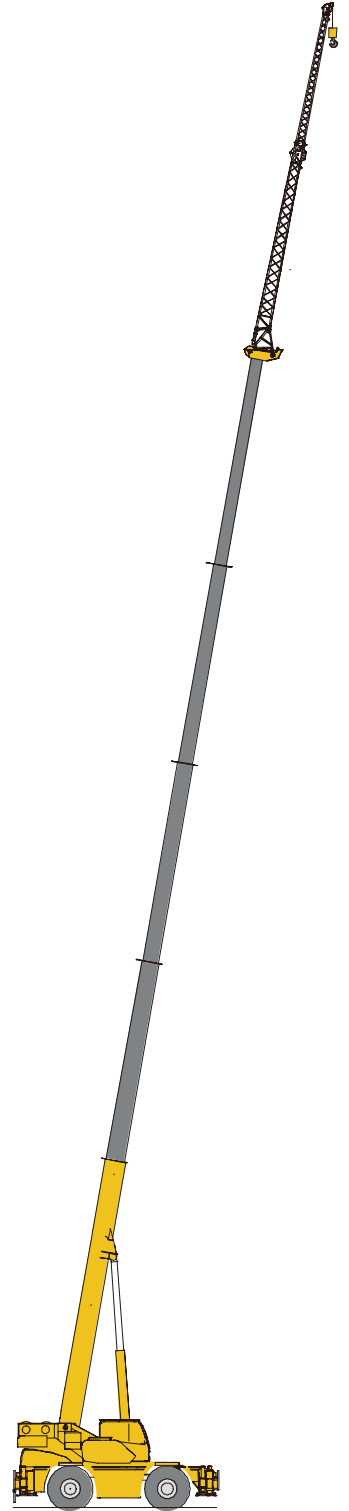
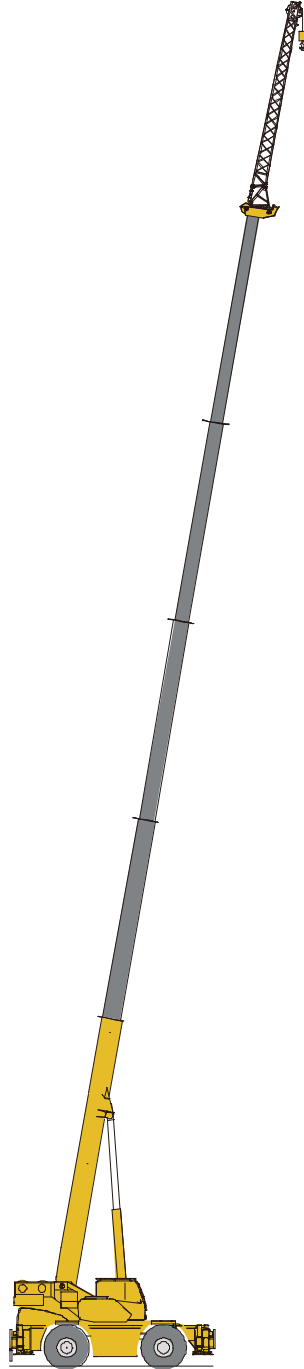
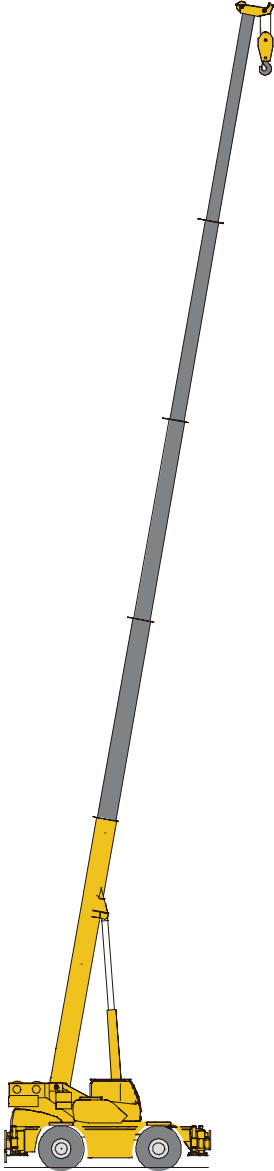
First and second jib section assembly +
Connecting bracket



折叠 (Folded) : 32.1×3.1×4.1

2055

Boom / Jib combinations



Telescopic boom

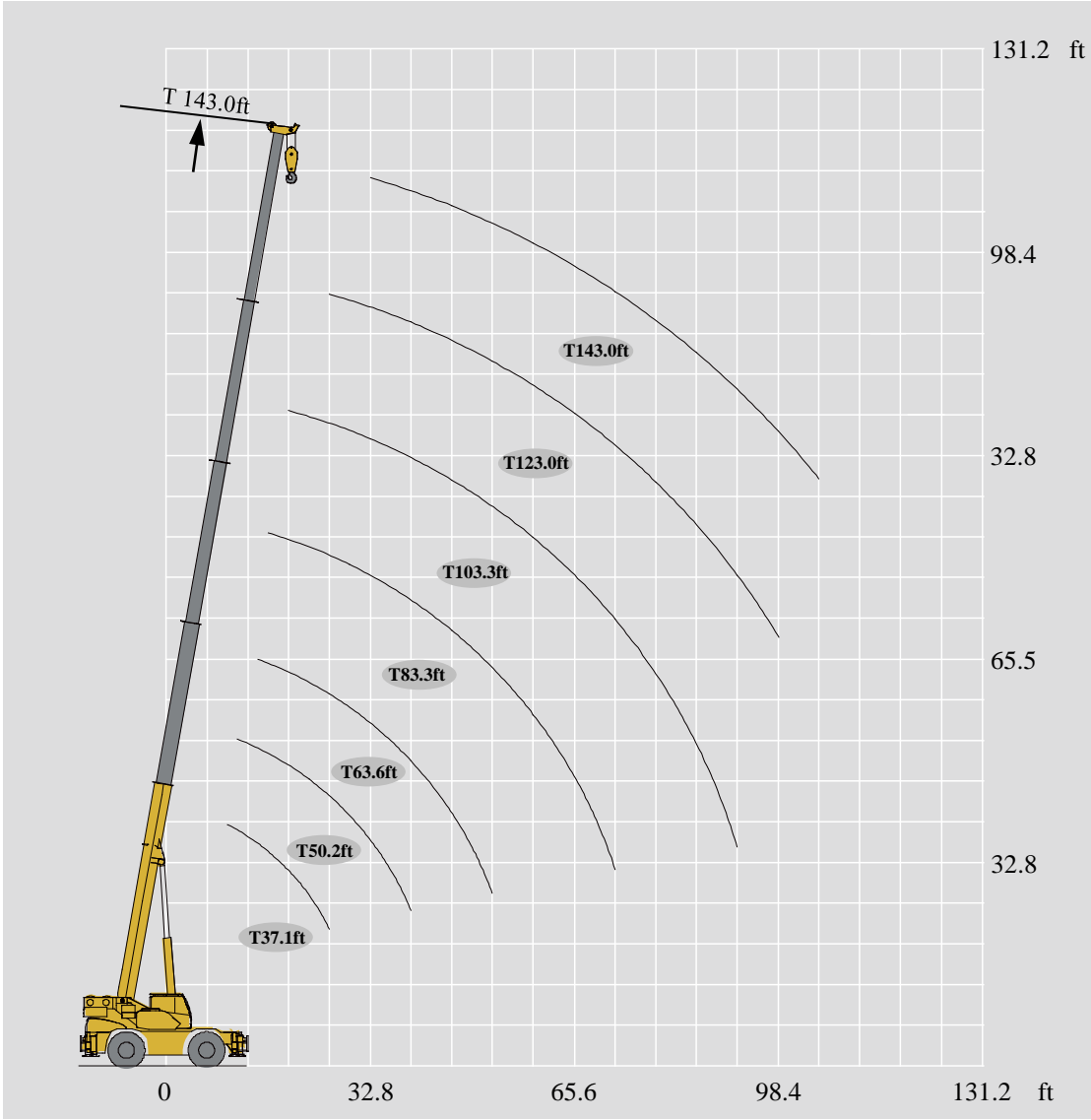
37.1~143.0ft

Telescopic boom + First jib section

143.0ft+30.2ft

Telescopic boom + First and second jib sections

143.0ft+52.5ft

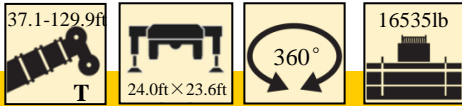


Lifting capacities

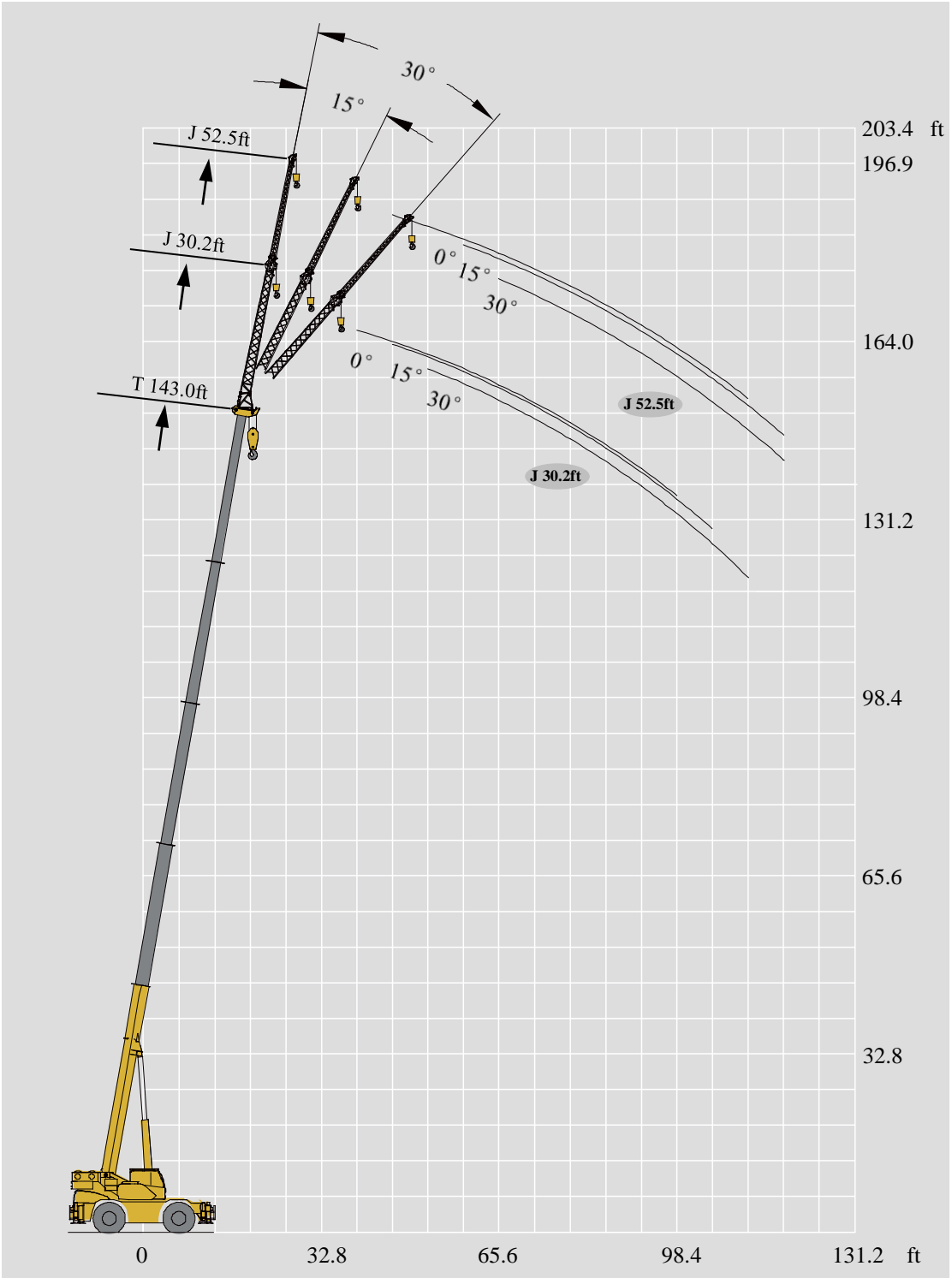
T 37.1~143.0ft

ASME B30.5 85%

Unit : lb



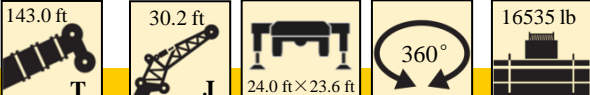
ft	37.1ft	50.2ft	63.6ft	83.3ft	103.3ft	123.0ft	143.0ft	57.1ft	76.8ft	96.8ft	116.5ft	70.2ft	90.2ft	109.9ft	129.9ft	ft
9.8	121253															9.8
11.5	113537	99207						52910								11.5
13.1	104719	94798						52910				52910				13.1
14.8	94798	88184	72752					52910	55115			52910				14.8
16.4	91491	82673	69445	49604				52910	55115			52910	54013			16.4
19.7	68343	72752	55115	49604	38581			52910	51147	36376		52910	54013			19.7
23.0	60847	59524	49604	41887	38581			52910	47619	33951	27117	52910	51147	35053		23.0
26.2	47399	51147	45194	36596	36376	26455		52910	44533	31305	25794	50706	48060	33069		26.2
29.5		39903	39021	32408	29762	24692		44533	41446	29101	24251	42990	44753	31085	24471	29.5
32.8		31967	31305	27778	23148	19180	19841	36376	37919	26896	22928	35053	36596	29101	22928	32.8
39.4		21826	21164	23810	20944	18078	16314	25794	27117	23369	20723	24692	26014	27117	21385	39.4
45.9			14991	17416	18739	16094	14330	19180	20503	21385	18298	18078	19621	20503	20944	45.9
52.5			10582	13007	14330	14550	13007		16094	16755	17416	13669	14991	15873	16314	52.5
59.1				9921	11023	11905	12566		12787	13448	14109	10582	11905	12566	13007	59.1
65.6				7496	8598	9480	10141		10362	11023	11684		9480	10141	10582	65.6
72.2				5512	6834	7496	8157			9039	9700		7496	8157	8598	72.2
78.7					5291	5952	6614			7496	8157		5952	6614	7055	78.7
85.3					3968	4630	5291			6173	6834			5512	5732	85.3
91.9					2866	3748	4189				5732			4409	4630	91.9
98.4						2866	3307				4850			3307	3748	98.4
105.0							2425				3968				3086	105.0
111.5															2425	111.5
2nd	0	50%	100%	100%	100%	100%	100%	0%	0%	0%	0%	50%	50%	50%	50%	2nd
3rd	0	0	0	25%	50%	75%	100%	25%	50%	75%	100%	25%	50%	75%	100%	3rd
4th	0	0	0	25%	50%	75%	100%	25%	50%	75%	100%	25%	50%	75%	100%	4th
5th	0	0	0	25%	50%	75%	100%	25%	50%	75%	100%	25%	50%	75%	100%	5th



Lifting capacities

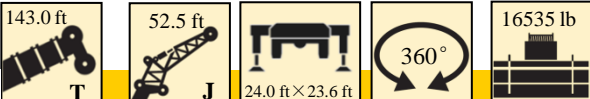
J 30.2-52.5ft

ASME B30.5 85% Unit : lb



ft	143.0 ft+30.2ft			ft
	0°	15°	30°	
39.4	11023			39.4
45.9	10582	7055		45.9
52.5	9921	6834	5512	52.5
59.1	8818	6614	5291	59.1
65.6	7055	6393	4850	65.6
72.2	5732	5952	4850	72.2
78.7	4630	5071	4409	78.7
85.3	3748	4189	4189	85.3
91.9	3086	3307	3968	91.9
98.4	2425	2646	3527	98.4
105.0		1984	2646	105.0
111.5			1984	111.5















ASME B30.5 85% Unit : lb



ft	143.0 ft+30.2 ft			ft
	0°	15°	30°	
45.9	6393			45.9
52.5	6173			52.5
59.1	5952	4189		59.1
65.6	5512	3968	2866	65.6
72.2	5071	3748	2646	72.2
78.7	4630	3307	2646	78.7
85.3	4189	3086	2646	85.3
91.9	3748	2866	2425	91.9
98.4	3527	2866	2425	98.4
105.0	2646	2646	2205	105.0
111.5	1984	2646	2205	111.5
118.1		2205	1764	118.1

Description of symbols

Symbol glossary

	Outriggers		Axle
	Radius		Driving speed
	Boom angle		Grade ability
	Boom length		Tires
	Hook block		Counterweight
	360° rotation		Superstructure
	Winch		Rough terrain crane

Crane specific symbols



	Boom		Jib
--	------	---	-----

Table of main technical parameters

Category	Item		Unit	Parameter	Allowance
Dimensions	Outline size (length×width×height)		ft	45.1×9.8×11.8	±1%
	Wheel base		ft	12.6	±1%
	Track (Front/ Rear)		ft	7.6/7.6	±1%
	Front/ Rear overhang		ft	6.9/8.3	±1%
	Front/ Rear extension		ft	17.3/0	±1%
Weight	Gross vehicle weight		lb	92152 (16535 lb counterweight)	±3%
	Axle load	1st axle	lb	46746	±3%
		2nd axle	lb	45406	±3%
Power	Engine model		—	QSB6.7	—
	Engine rated power		bhp/rpm	260/2000	—
	Engine rated torque		lb.ft/rpm	730/1500	—
Travel	Max. travel speed		mph	≥21.7	—
	Min. turning diameter		ft	≤39.4	—
	Min. ground clearance		ft	1.5	±1%
	Approach angle		°	26	±1°
	Departure angle		°	20.5	±1°
	Braking distance (at 14.91 mph)		ft	≤29.5	—
	Max. grade ability		%	≥86	—

Table of main technical parameters

Category	Item		Unit	Parameter	Allowance	
Main performance	Max. total rated lifting capacity		US _t	60	±5%	
	Min. rated working radius		ft	9.8	±1%	
	Turning radius at turntable tail	Counterweight	ft	13.6	±1%	
	Max. load moment	Base boom	ft·lb	1499832	±1%	
		Fully-extended boom	ft·lb	689546	±1%	
	Outrigger span	Longitudinal	ft	23.9	±1%	
		Lateral	ft	23.6	±1%	
	Hoist height	Base boom	ft	39.0	±1%	
		Fully-extended boom	ft	143.3	±1%	
		Fully-extended boom + Jib	ft	187.3	±1%	
	Boom length	Base boom	ft	37.1	±1%	
		Fully-extended boom	ft	143.0	±1%	
		Fully-extended boom + Jib	ft	195.5	±1%	
Jib offset angle			°	0、15、30	—	
Working speed	Boom raising time		s	45	—	
	Boom fully extending time		s	80	—	
	Max. slewing speed		r/min	1.5	—	
	Outrigger extending and retracting time	Outrigger beam	Retracting	s	20	—
			Extending	s	30	—
		Outrigger jack	Retracting	s	30	—
			Extending	s	35	—
	Hoisting speed (single line, 4th layer, no load)	Main winch	fpm	492.1	—	
Auxiliary winch		fpm	426.5	—		

Notes

1. The total rated loads given in the rated load charts are the maximum lifting capacity when the crane is set up on firm and level ground, which includes the weight of the hook block and slings. The weight of above-mentioned devices should be deducted from the rated lifting load.
2. The working radius shown in the rated load charts is the radius when the load is lifted off the ground, and it is the actual value including loaded boom deflection. Take boom deflection into consideration before beginning a lifting operation.
3. A lifting operation is permissible only when the wind force is below grade 5 (instantaneous wind speed is 46.2ft/s, wind pressure is 142.2psi).
4. Before beginning lifting operation, the operator should know the weight of the load to be lifted and its working range, and then select proper working conditions. Never operate the crane beyond the limit shown in the chart. Use the lower value from the chart when the boom length or working radius is between the range of values.
5. Observe the boom angle limit. Never operate the crane with the boom angle beyond the recommended limit even if a load is not being carried. Otherwise, the crane will tip.
6. The boom should be extended according to the telescoping code shown by digits, which means the percentage of boom sections extended.



Add : No. 68 Gaoxin Road, Economic and Technological
Development Zone, Xuzhou, Jiangsu, China

Tel : +86-516-83462242/83462350

Quality Inquiry Tel : +86-516-87888268

Spare Parts Tel : +86-516-83461542

Post Code : 221004

Web : www.xcmg.com/qizhongji

Service Tel

400-110-9999

400-001-5678



This print does not belong to the contract. We reserve the right to modify the design (such as product model, parameters and configuration) without notice for improvement. The pictures are just for reference. The product in the picture may not be standard configuration. Some parts need to be purchased separately. Conform to the local laws for license application and road traveling.