

# All Terrain Crane QAY200



## Zoomlion Mobile Crane Branch Company

Address: Zoomlion Quantang Industrial Park, Changsha Economic-Technological Development Zone, China

Find out more details at: [en.zoomlion.com](http://en.zoomlion.com)

Copyright © 2014 Zoomlion. All Rights Reserved.  
Reproduction and copying any part of the Contents is not allowed for any purposes without Zoomlion's written approval.



Contacts



**ZOOMLION**

## Outstanding lifting capacity

### Main boom:

1 basic boom and 6 telescopic sections

Max. main boom length: 72 m

Max. lifting height: 72 m

### Jib:

Max. jib length: 36 m

Max. lifting height: 103 m

Boom sections welded from high-tensile steel ( $\delta_s = 1100 \text{ MPa}$ )

Optimal oviform boom profile of outstanding local stability and particular torsional rigidity

Underslung self-handled multivariable counterweight system in a total weight of 72 t

Counterweight variants of 0 t, 10 t, 21 t, 32 t, 41 t, 57 t and 72 t, for a considerable application spectrum

## Robust drive concept for special purpose chassis

Modern variable steering concept:

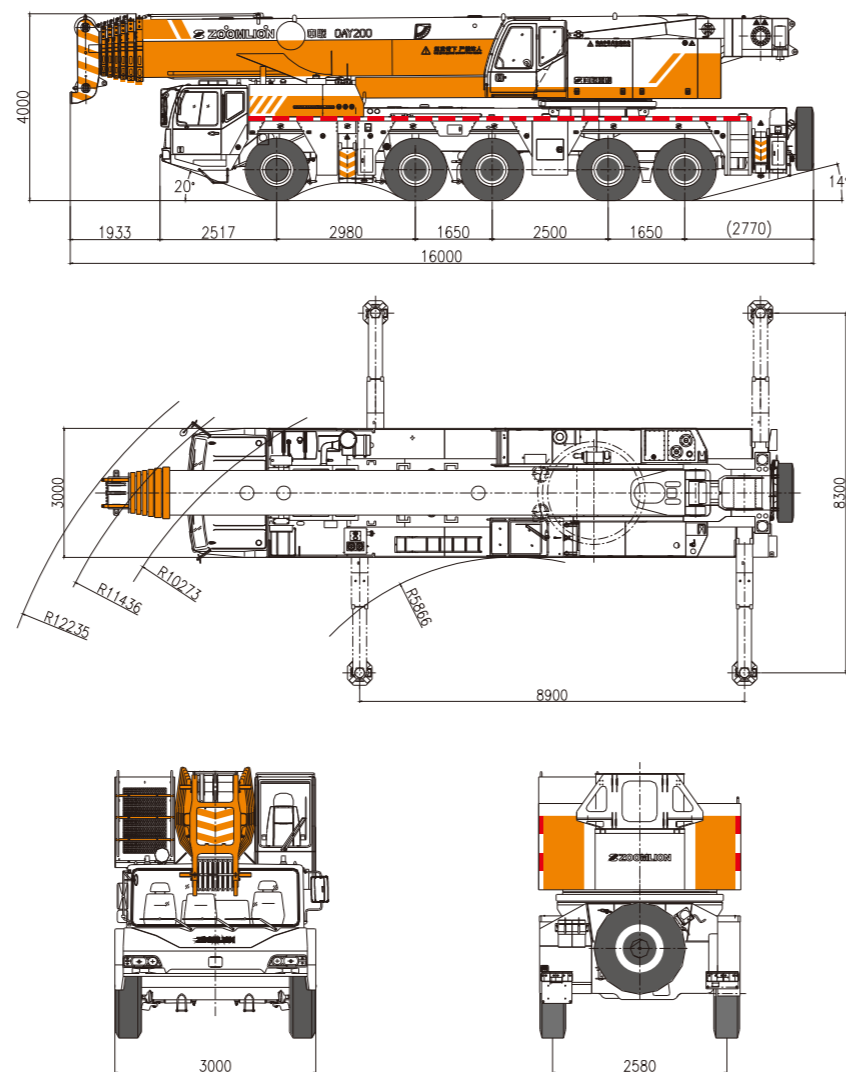
- All axles are steerable. The axles 2, 4 and 5 are driven.
- The axles 1 and 2 are mechanically steered by the steering wheel with hydraulic assistance.
- The axles 3, 4 and 5 are electrically steered.
- 6 steering programs pre-selectable by fixed programs
- Emergency steering function in case of failure
- The rear axles lockable after being set to straight travel.

## Stable and reliable hydraulic system

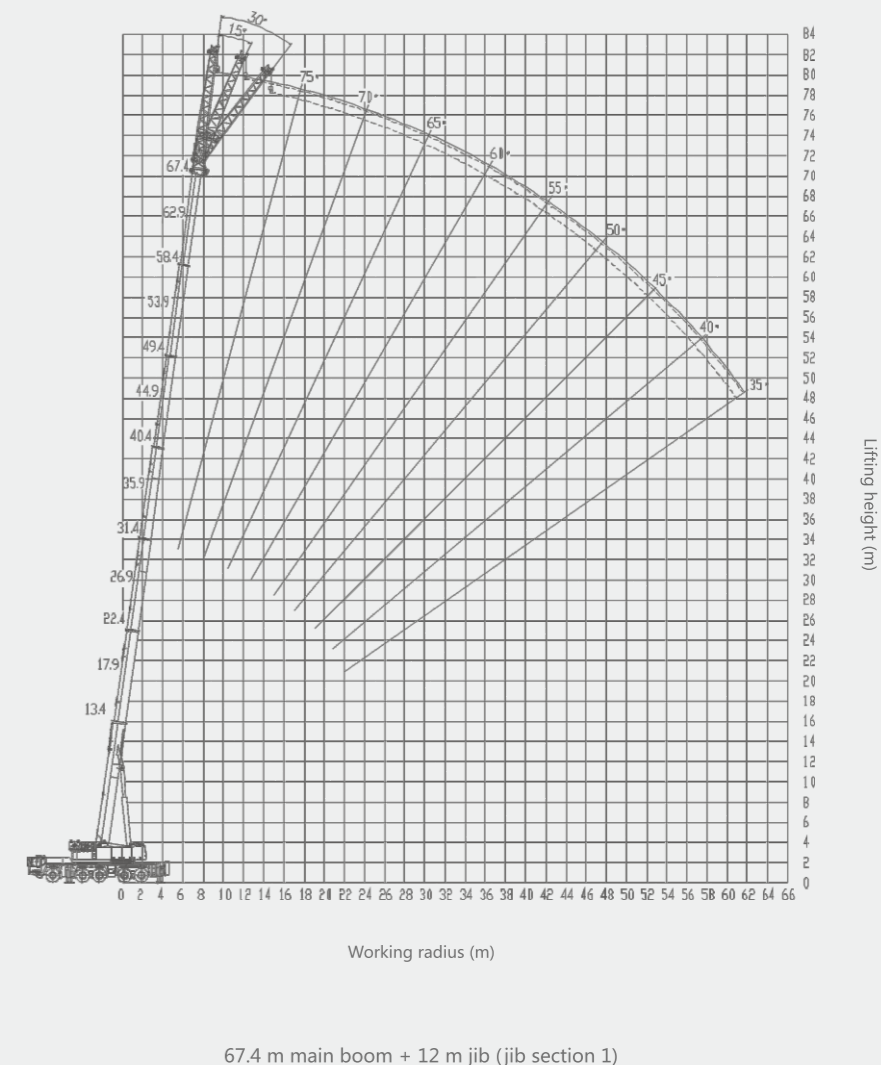
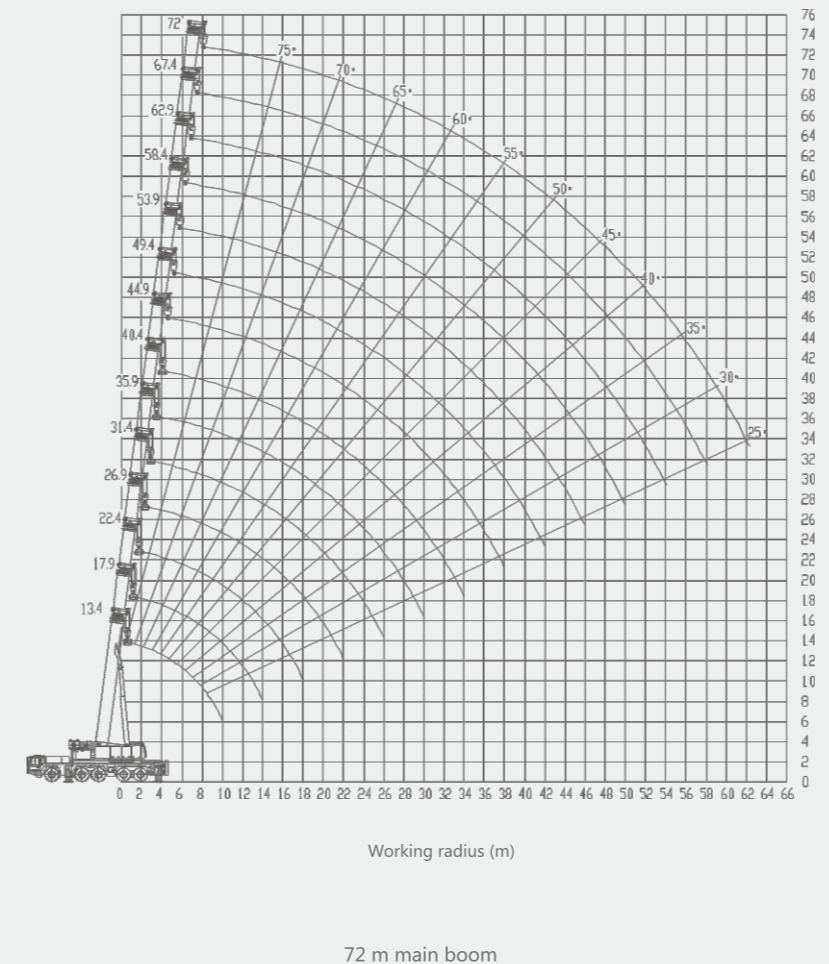
Innovated flow converging & diverging technology for simultaneous movements, providing notably improved work efficiency



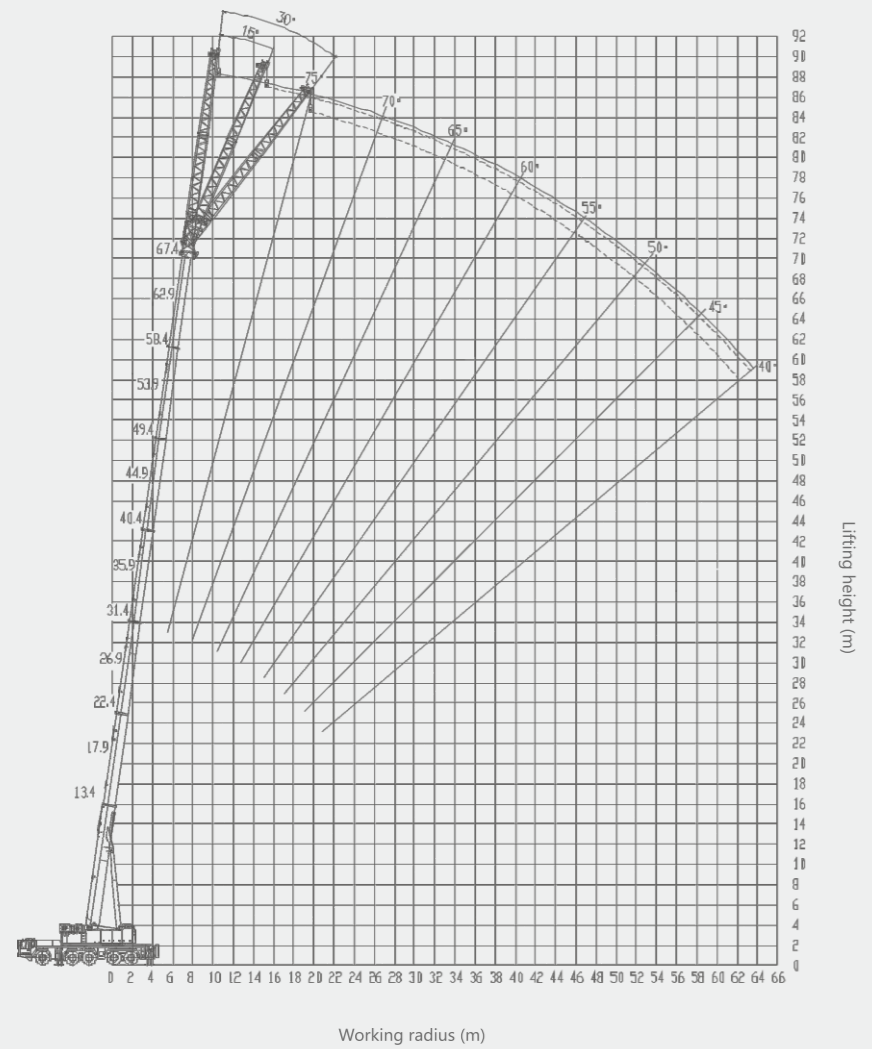
QAY200 Overall view (Unit: Metric mm)



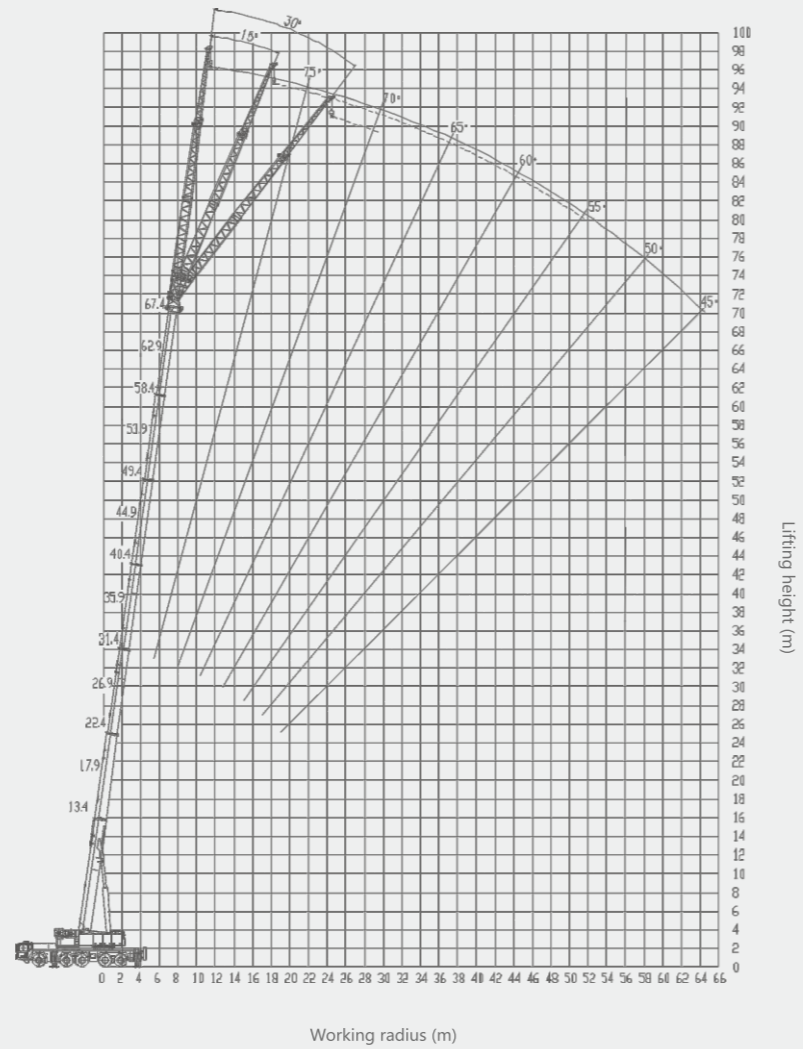
QAY200 Lifting height charts



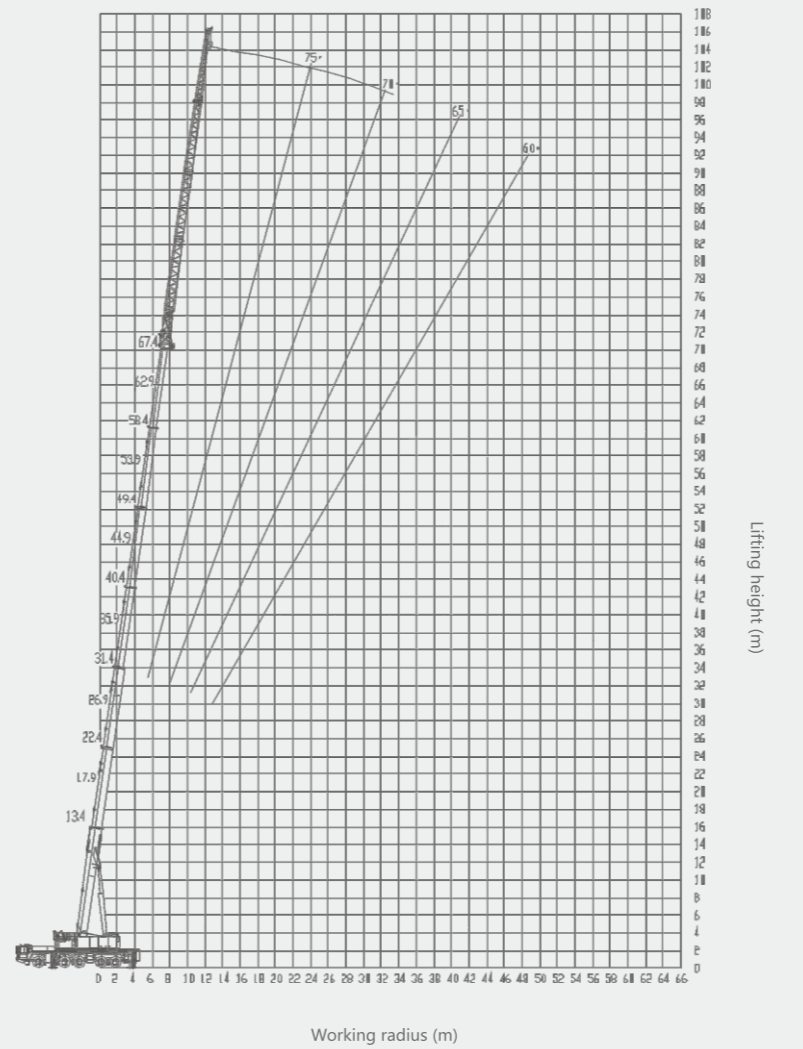
Item		Value	
Work performance	Max. rated lifting capacity	kg 200000	
	Max. load moment of basic boom	kN.m 6664	
	Max. lifting height of main boom	m 72	
	Max. lifting height of jib	m 95/ (103)	
Work speeds	Max. hoist rope speed (Main winch)	m/min 120	
	Max. hoist rope speed (Auxiliary winch)	m/min 70	
	Boom extending time	min 12	
	Boom derricking up time	s 97	
Driving	Slewing speed	r/min 0~1.4	
	Max. driving speed	m 2000	
	Max. gradeability	km/h 75	
	Min. turning diameter	% 40	
	Min. ground clearance	m 20	
	Limits for exhaust pollutants and smoke	mm 305	
	Oil consumption per hundred kilometers	Conform to related standards	
	Deadweight in driving condition	L 78	
	Mass	Axle load	kg 60000
		Overall dimensions (L × W × H)	kg 12000
Outrigger spread (L)		mm 16000×3000×4000	
Outrigger spread (W)		m 8.9	
Dimensions	Main boom length	m 8.3	
	Boom angle	m 13.4 ~ 72	
	Jib length	° -0.5 ~ 83	
	Jib + extension length	m 12、20、28	
	Offset	m 36	
	Model	° 0、15、30	
	Type	ZLJ5602JQZV4	
Chassis	Engine Model	OM460LA.E3B/3	
	Engine Max. rated power	361.1	
	Max. output torque	kW/r/min 2200	
	Manufacturer	N.m/r/min ZOOMLION HEAVY INDUSTRY SCIENCE AND TECHNOLOGY CO., LTD.	



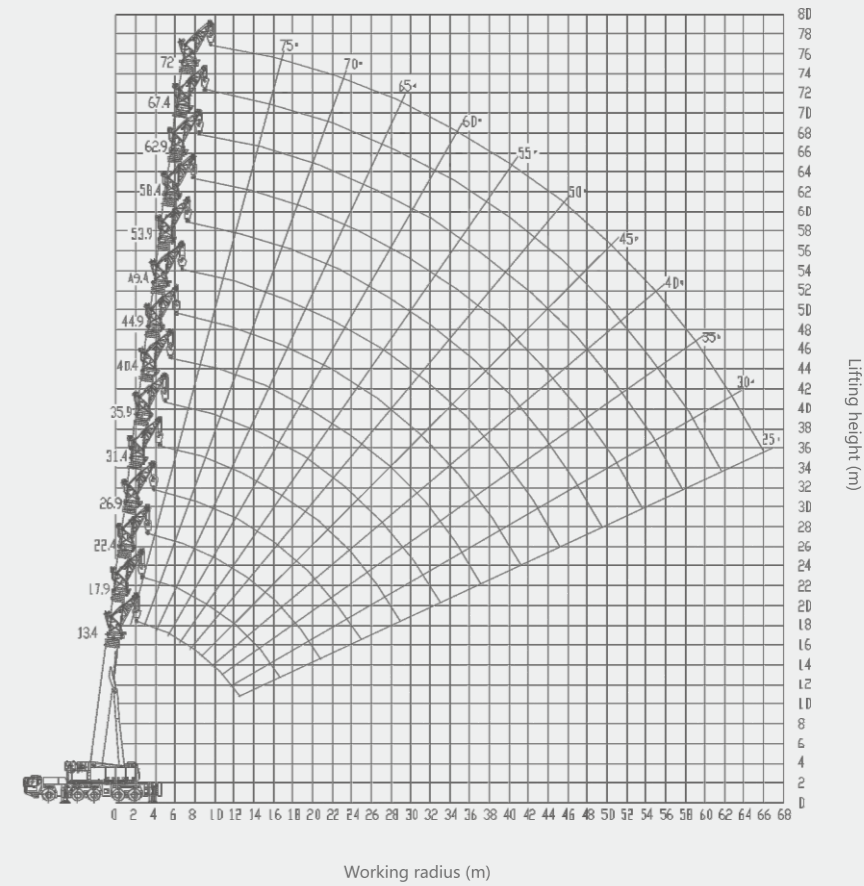
67.4 m main boom + 20 m jib (extension 2 + jib section 1)



67.4 m main boom + 28 m jib (extension 2 + jib section 1 + jib section 2)



67.4 m main boom + 36 m jib (extension 1 + extension 2 + jib section 1 + jib section 2)



72m main boom + 4.3 m tip boom



Table 5 Main boom Unit: Metric tons

Table with 14 columns (Working radius, 13.4, 17.9, 22.4, 26.9, 31.4, 35.9, 40.4, 44.9, 49.4, 53.9, 58.4, 62.9, 67.4, 72) and 24 rows of data.

NOTE The values with \* are suitable for 220 t hook. When the lifting capacity is 140 t, 15 reevings are recommended.

Table 6 Main boom Unit: Metric tons

Table with 14 columns (Working radius, 13.4, 17.9, 22.4, 26.9, 31.4, 35.9, 40.4, 44.9, 49.4, 53.9, 58.4, 62.9, 67.4, 72) and 24 rows of data.

Table 7 Main boom Unit: Metric tons

Table with 14 columns (Working radius, 13.4, 17.9, 22.4, 26.9, 31.4, 35.9, 40.4, 44.9, 49.4, 53.9, 58.4, 62.9, 67.4, 72) and 24 rows of data.

Table 8 Main boom Unit: Metric tons

Table with 14 columns (Working radius, 13.4, 17.9, 22.4, 26.9, 31.4, 35.9, 40.4, 44.9, 49.4, 53.9, 58.4, 62.9, 67.4, 72) and 24 rows of data.

NOTE The values with \* are suitable for 220 t hook. When the lifting capacity is 200 t, 18 reevings are recommended. When the lifting capacity is 145 t, 15 reevings are recommended.

Table 9 Main boom Unit: Metric tons

Table with 15 columns: Working radius (m) and 14 numerical columns representing load capacity for various outrigger configurations. The table is titled 'Outriggers intermediately extended, with 57 t counterweight, over full range'. It includes rows for working radii from 3.0m to 52.0m and a section for hook and telescoping modes (I-VI).

NOTE The values with \* are suitable for 220 t hook. When the lifting capacity is 200 t, 18 reevings are recommended. When the lifting capacity is 145 t, 15 reevings are recommended.

Table 10 Main boom Unit: Metric tons

Table with 15 columns: Working radius (m) and 14 numerical columns representing load capacity for various outrigger configurations. The table is titled 'Outriggers intermediately extended, with 41 t counterweight, over full range'. It includes rows for working radii from 3.0m to 42.0m and a section for hook and telescoping modes (I-VI).

NOTE The values with \* are suitable for 220 t hook. When the lifting capacity is 200 t, 18 reevings are recommended. When the lifting capacity is 145 t, 15 reevings are recommended.

Table 11 Main boom Unit: Metric tons

Table with 15 columns: Working radius (m) and 14 numerical columns representing load capacity for various outrigger configurations. The table is titled 'Outriggers intermediately extended, with 32 t counterweight, over full range'. It includes rows for working radii from 3.0m to 38.0m and a section for hook and telescoping modes (I-VI).

NOTE The values with \* are suitable for 220 t hook. When the lifting capacity is 200 t, 18 reevings are recommended. When the lifting capacity is 145 t, 15 reevings are recommended.

Table 12 Main boom Unit: Metric tons

Table with 15 columns: Working radius (m) and 14 numerical columns representing load capacity for various outrigger configurations. The table is titled 'Outriggers intermediately extended, with 21 t counterweight, over full range'. It includes rows for working radii from 3.0m to 30.0m and a section for hook and telescoping modes (I-VI).

NOTE The values with \* are suitable for 220 t hook. When the lifting capacity is 140 t, 15 reevings are recommended.





Table 21 Jib Unit: Metric tons

Table with columns for Jib length (12.0m, 20.0m, 28.0m, 36.0m) and Boom angle (0, 15, 30). Rows include Boom length (62.9m, 67.4m) and Boom angle (82, 80, 78, 76, 74, 72, 70, 68, 66, 64, 62, 60, 58, 56, 54).

Table 22 Jib Unit: Metric tons

Table with columns for Jib length (12.0m, 20.0m, 28.0m, 36.0m) and Boom angle (0, 15, 30). Rows include Boom length (62.9m, 67.4m) and Boom angle (82, 80, 78, 76, 74, 72, 70, 68, 66, 64, 62, 60).

Table 23 Main boom Unit: Metric tons

Table with columns for Working radius (m) (13.4, 17.9, 22.4, 26.9, 31.4, 35.9, 40.4, 44.9, 49.4, 53.9, 58.4, 62.9, 67.4, 72) and Working radius (m) (3, 3.5, 4, 4.5, 5, 5.5, 6, 7, 8, 9, 10, 11, 12, 14, 16, 18, 20, 22, 24, 26, 28, 30, 32, 34, 36, 38, 40, 42, 44, 46, 48, 50, 52, 54, 56, 58, 60, 62, 64, 66, 68). Rows include Main boom + tip boom, outriggers fully extended, with 72 t counterweight, 360° over full range.

Table 24 Main boom Unit: Metric tons

Table with columns for Working radius (m) (13.4, 17.9, 22.4, 26.9, 31.4, 35.9, 40.4, 44.9, 49.4, 53.9, 58.4, 62.9, 67.4, 72) and Working radius (m) (3, 3.5, 4, 4.5, 5, 5.5, 6, 7, 8, 9, 10, 11, 12, 14, 16, 18, 20, 22, 24, 26, 28, 30, 32, 34, 36, 38, 40, 42, 44, 46, 48, 50, 52, 54, 56, 58, 60, 62, 64, 66, 68). Rows include Main boom + tip boom, outriggers fully extended, with 57 t counterweight, 360° over full range.

Table 25 Main boom Unit: Metric tons

Table with columns for Working radius (m) (13.4, 17.9, 22.4, 26.9, 31.4, 35.9, 40.4, 44.9, 49.4, 53.9, 58.4, 62.9, 67.4, 72) and Working radius (m) (3, 3.5, 4, 4.5, 5, 5.5, 6, 7, 8, 9, 10, 11, 12, 14, 16, 18, 20, 22, 24, 26, 28, 30, 32, 34, 36, 38, 40, 42, 44, 46, 48, 50, 52, 54). Rows include Main boom + tip boom, outriggers fully extended, with 41 t counterweight, 360° over full range, and Reaving/Telescoping mode details.

Table 26 Main boom Unit: Metric tons

Main boom + tip boom, outriggers fully extended, with 32 t counterweight, 360°over full range														
Working radius (m)	13.4	17.9	22.4	26.9	31.4	35.9	40.4	44.9	49.4	53.9	58.4	62.9	67.4	72
3	36													
3.5	34													
4	33	33												
4.5	32.5	32	33											
5	32	32	33											
5.5	31	31	32	33										
6	30	30	31	32	33									
7	28	29	30	31	32	32								
8	27	28	29	30	31	31								
9	26	27	28	29	30	30	31							
10	25	26	27	28	29	29	30	28						
11	24	25	26	27	28	28	29	27						
12	23	24	25	26	27	27	28	25	26	21				
14	21.5	23	24	24	25	26	27	22	23.5	19	15			
16		21.5	22.5	22.5	23.5	24.5	25	20	21	18	15	12		
18		19	19.5	19	19	20	21	18	19	16	14	12	9	
20			16	15	15	16	17	16.5	16.5	15	13	11	9	7
22			13	12	12.5	13	14.5	13.5	13.5	13.5	12	10	9	7
24				10	10.5	11	12	11.5	11.5	12	11	9.8	9	7
26				8.5	9	9.5	10.5	10	10	10	10	9.4	8.5	7
28					7.5	8	9	8.5	8.5	8.5	8.5	8.8	8	7
30					6	7	7.8	7.3	7.3	7.3	7.4	7.5	7.5	7
32					6	6.5	6.2	6.2	6.2	6.2	6.2	6.5	6.5	6.5
34						5	5.6	5.2	5.2	5.2	5.5	5.8	6.2	6.2
36							4.8	4.4	4.3	4.3	4.5	5	5.3	5.3
38							4	3.6	3.5	3.5	3.8	4	4.5	4.5
40								3	2.8	3	3.2	3.5	3.8	3.8
42								2.3	2.2	2.4	2.5	3	3.2	3.2
44									1.6	1.7	2	2.3	2.5	2.5
46											1.5	1.8	2.2	2.2
48													1.8	1.8
Reeving	4	4	4	4	4	4	4	3	3	2	2	2	2	2
Hook	50 t							25 t						
Telescoping mode	I	1	1	1	2	2	2	2	3	3	3	3	3	4
	II	1	2	2	2	2	2	2	3	3	3	3	3	4
	III	1	1	2	2	2	2	2	2	3	3	3	3	4
	IV	1	1	1	1	2	2	2	2	3	3	3	3	4
	V	1	1	1	1	1	2	2	2	2	3	3	3	4
	VI	1	1	1	1	1	1	2	2	2	2	3	3	4

Table 27 Main boom Unit: Metric tons

Main boom + tip boom, outriggers fully extended, with 21 t counterweight, 360°over full range																	
Working radius (m)	13.4	17.9	22.4	26.9	31.4	35.9	40.4	44.9	49.4	53.9	58.4	62.9	67.4	72			
3	36																
3.5	34																
4	33	33															
4.5	32.5	32	33														
5	32	32	33														
5.5	31	31	32	33													
6	30	30	31	32	33												
7	28	29	30	31	32	32											
8	27	28	29	30	31	31											
9	26	27	28	29	30	30	31										
10	24.5	26	27	28	29	29	30	28									
11	23	25	26	27	28	28	29	27									
12	22	24	25	26	26	27	28	25	26	21							
14	21	22.5	23	22	22	23	22	21	21	19	15						
16		18.5	19	17	17	18	18	17	17	15	12						
18		14.5	15	13	13	15	15	14	14	14	12	9					
20			12	11	11	12	12	12	12	12	11	9	7				
22				9.5	8.5	9	10	10	10	10	10	9	7				
24					6.5	7.6	8	8.5	8	8	8	8	7				
26						5	6	6.5	7	6.8	6.8	7	7	7			
28							4.8	5.5	6	5.4	5.2	5.3	5.5	6	6		
30								3.8	4.5	5	4.4	4.2	4.3	4.5	5	5	
32									3.5	4	3.5	3.4	3.5	3.8	4	4.2	4.2
34										3.2	2.6	2.5	2.7	3	3	3.3	3.3
36										2.5	2	1.8	2	2.3	2.5	2.8	2.8
38												1.6	2	2.2	2.2		
40															1.8	1.8	
Reeving	4	4	4	4	4	4	4	3	3	2	2	2	2	2			
Hook	50 t							25 t									
Telescoping mode	I	1	1	1	2	2	2	3	3	3	3	3	3	4			
	II	1	2	2	2	2	2	2	3	3	3	3	3	4			
	III	1	1	2	2	2	2	2	2	3	3	3	3	4			
	IV	1	1	1	1	2	2	2	2	3	3	3	3	4			
	V	1	1	1	1	1	2	2	2	2	3	3	3	4			
	VI	1	1	1	1	1	1	2	2	2	2	3	3	4			

Table 28 Main boom Unit: Metric tons

Main boom + tip boom, outriggers fully extended, with 10 t counterweight, 360°over full range																	
Working radius (m)	13.4	17.9	22.4	26.9	31.4	35.9	40.4	44.9	49.4	53.9	58.4	62.9	67.4	72			
3	36																
3.5	34																
4	33	33															
4.5	32.5	32	33														
5	32	32	33														
5.5	31	31	32	33													
6	30	30	31	32	33												
7	28	29	30	31	32	32											
8	27	28	29	30	31	31											
9	26	27	28	29	30	30	31										
10	24.5	26	27	28	29	29	30	28									
11	23	25	26	26	27	27	28	25	25	21	20						
12	22	24	24	23.5	24	24	26	21	21	20							
14	18	17.5	17.5	16.5	17	18	19	18	18	18	15						
16		13	13	12.5	12.5	13	14	13.5	13.5	14	12	11					
18		9.5	9.5	9	9.5	10	11	10	10	10	10	8					
20			7.5	6.5	7.5	8	8.5	8	8	8	8	8.5	7	6			
22				5.5	4	5.5	6	7	6	6	6	6	6.5	6	6		
24					3.5	4	4.8	5.5	5	5	5	5	5	5			
26						2.5	3	3.8	4.2	3.8	3.8	3.8	4	4	4		
28							2	2.8	3.2	2.8	2.8	2.8	3	3	3	3	
30								1.8	2.2	1.8	1.8	1.8	2	2.2	2.5	2.5	
32									1.8					1.6	1.8	1.8	
Reeving	4	4	4	4	4	4	4	3	3	2	2	2	2	2			
Hook	50 t							25 t									
Telescoping mode	I	1	1	1	2	2	2	3	3	3	3	3	3	4			
	II	1	2	2	2	2	2	2	3	3	3	3	3	4			
	III	1	1	2	2	2	2	2	2	3	3	3	3	4			
	IV	1	1	1	1	2	2	2	2	3	3	3	3	4			
	V	1	1	1	1	1	2	2	2	2	3	3	3	4			
	VI	1	1	1	1	1	1	2	2	2	2	3	3	4			