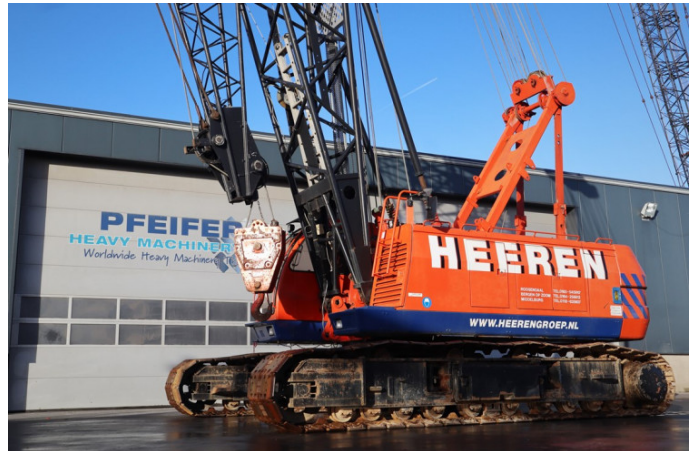


SUMITOMO SC700-II

1998 | PR-Id 60450

- > Incl. transport advice
- > Incl. required documents

POA



GENERAL SPECIFICATIONS

Item Number	PR-Id 60450	Manufacturer	Sumitomo
Model	SC700-II	Year of construction	1998
Hours	3024	Hours carrier	0
Hours superstructure	0	Kilometers	0
Loading (lifting) capacity	70000	Boom length maximum	43
Fuel	Diesel	Net weight (kg)	0
Length (m)	0	Width (m)	3.18
Height (m)	3.12	Loading/lifting capacity	70000
Total volume container m3	0	Transmission	Steel Tracks
Engine manufacturer	Mitsubisi	Engine type	6D24T
Cylinders	6	Topspeed (km/h)	2
Min-1 / R.P.M.	2000	Gearbox type	Hydrostatic
Tire brand	-	Tires size	-
Capacity in KW	184	Capacity in HP	250
kVA	0	Bar (Compressor)	0
Watt	0	Hertz	0
Volume (compressor)	0	Working height	0
Height of platform	0	Horizontal range (m)	0
Platform size (l*w) m2	0	Loading ramp Length (m)	0
Loading ramp Width (m)	0	Loading ramp Height (m)	0
Air conditioning	✓	Number of passenger seats	0
Balance system	✓	Cabine type	-
Counterweight total kg	0	Number of counterweights	0
Number of hookblocks	1	Carrying capacity block 1	20
Number of sheaves per hookblock 1	1	Carrying capacity block 2	0
Number of sheaves per hookblock 2	0	Carrying capacity block 3	0
Number of sheaves per hookblock 3	0	Ball weight	0
Boom length minimum	0	Boom type	-
Boom sections	0	Jib	✓
Jib type	Jib	Jib length	31 m
Safety loadindicator	✓	Lift height (m)	0
Free lift height	0	Width workspace	0
Headway height (m)	0	Number of axles	0
Retarder/intarder	niet bekend	Total volume concrete mixer (l)	0

Drilling distance0

Length of flat-belt conveyor0

SALES
TEAM

HEAD OF SALES POLAND

HEAD OF SALES UK

HEAD OF SALES LATIN AMERICA











Erik Frank

+31 (0) 622694752



Kevin Stoteler

+31 (0) 618880129



Adriaan Aagten

+48 (0) 692904762



Wesley Wittstock

+44 (0) 7810022129



Marcos Vinicius Costa

+55 (0) 21 99272-0022



