

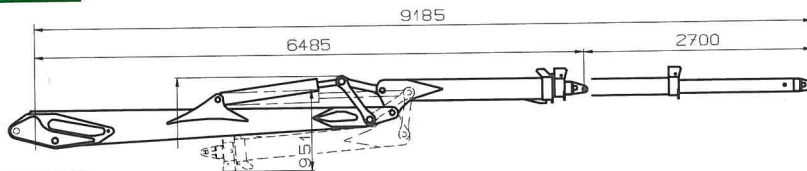


La serie "K"

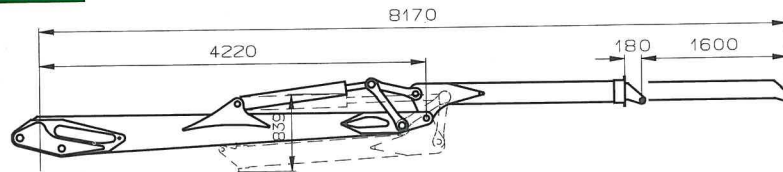
Las grúas de la serie "K" se distinguen por su potencia y su robustez. Durante el transporte, pueden aparcarse plegadas longitudinalmente sobre la carga o en el área de carga. Se distinguen de otras grúas no plegables por la biela de potencia entre los brazos principal y secundario. Esto permite un aumento adicional del momento de elevación en la posición horizontal. Las grúas "K" con una gran variedad de sistemas de brazo, prolonga sencilla o doble cumplen con los requisitos de la mayoría de los clientes. Son grúas versátiles para la carga de madera corta y troncos largos y también de residuos. Se fabrican en capacidades de elevación de 90 kNm a 260 kNm y son adecuadas para montaje en camión y estacionaria.

"K"

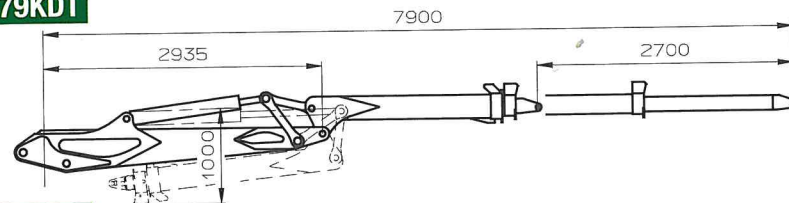
L14.92KDT



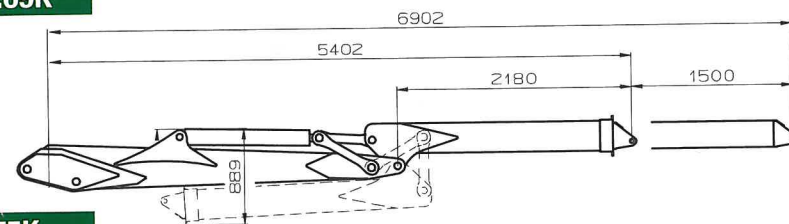
L14.81K



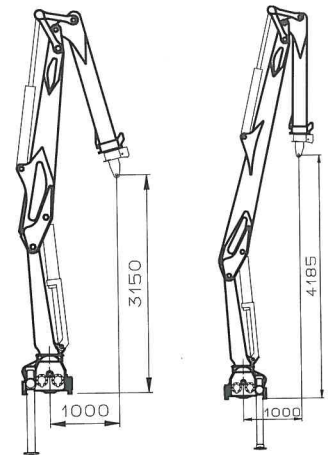
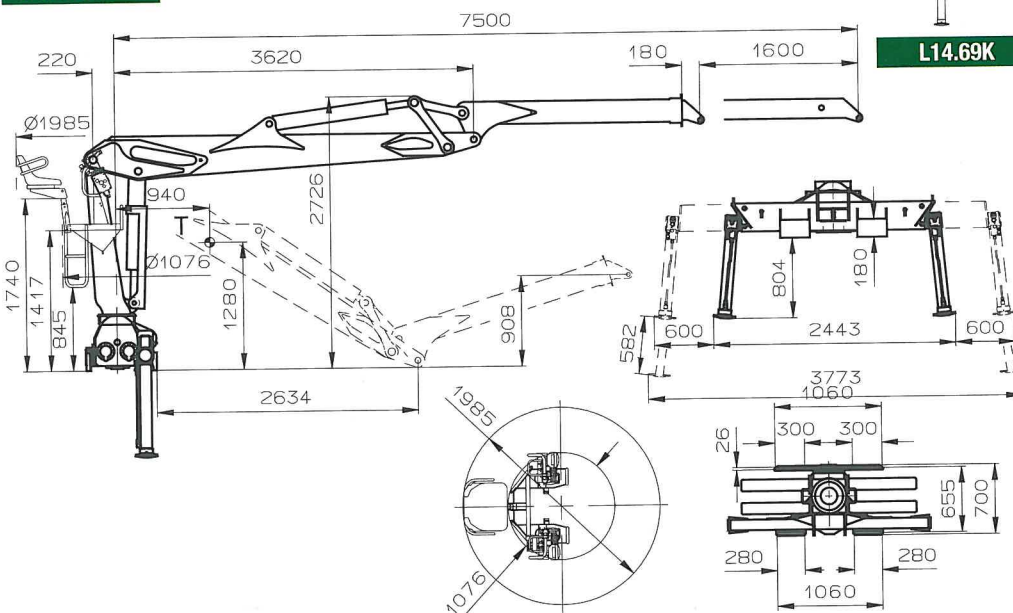
L14.79KDT



L14.69K

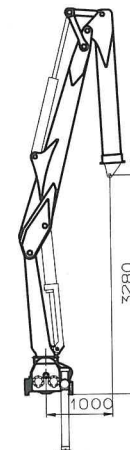


14.75K

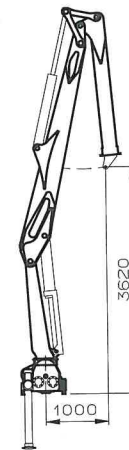


L14.79KDT

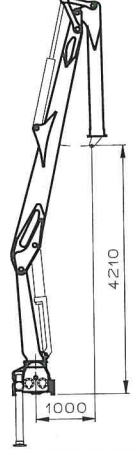
L14.92KDT



L14.69K

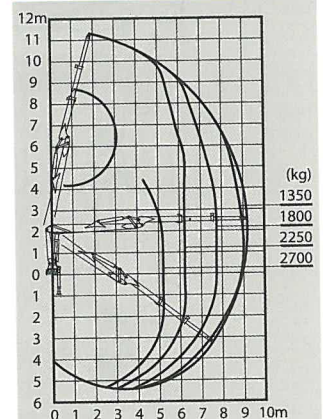


L14.75K

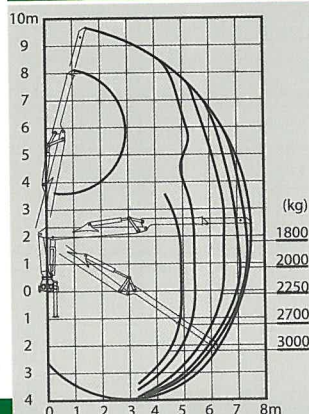


L14.81K

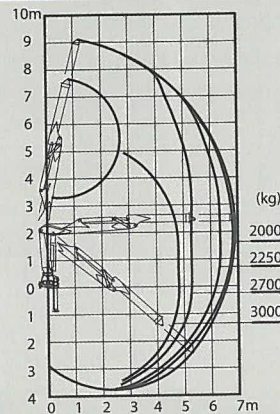
L14.92KDT



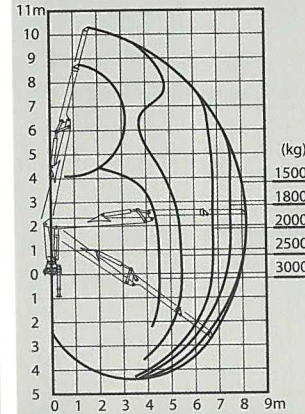
L14.75K



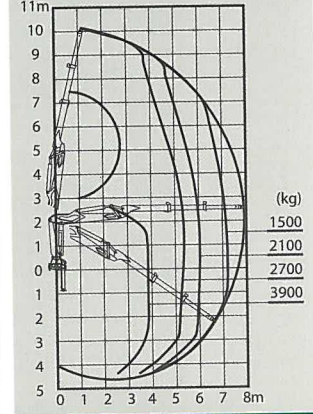
L14.69K



L14.81K

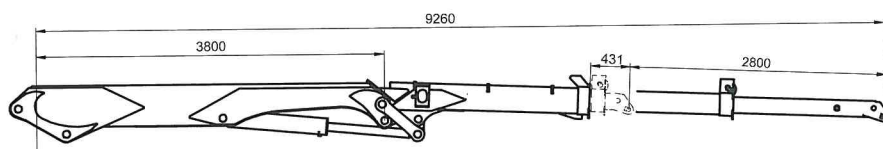


L14.79KDT

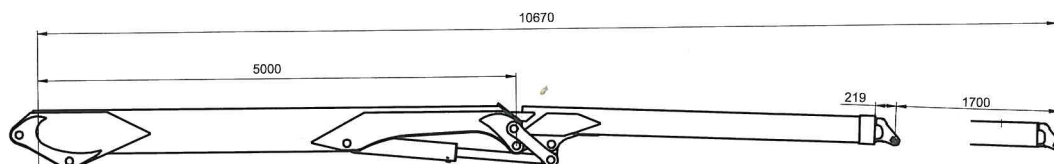


"K"

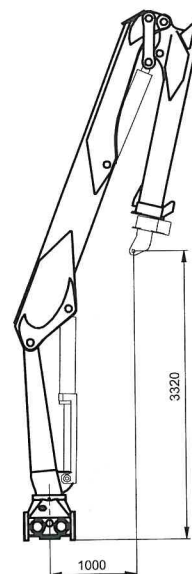
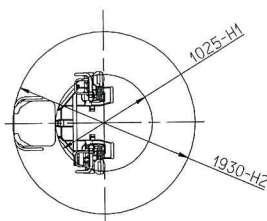
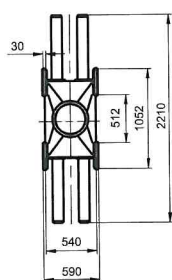
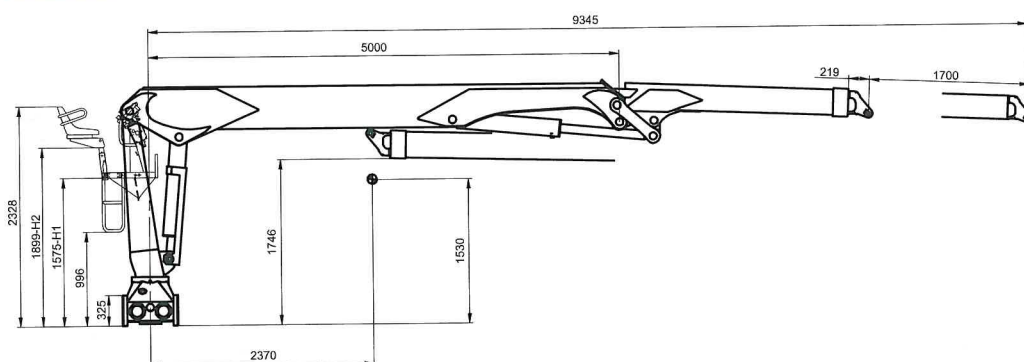
L27.92KDT



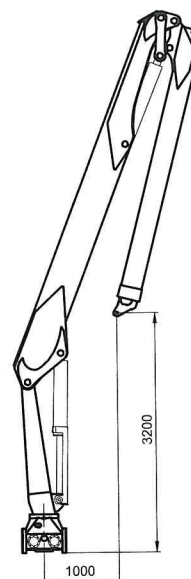
L27.107K



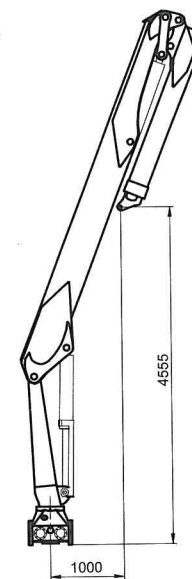
L27.94K



L27.92KDT

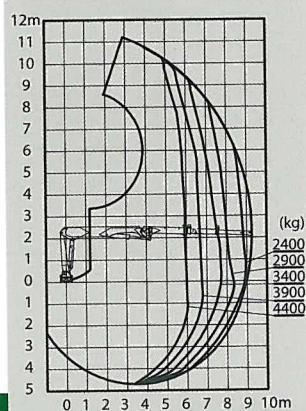


L27.107K

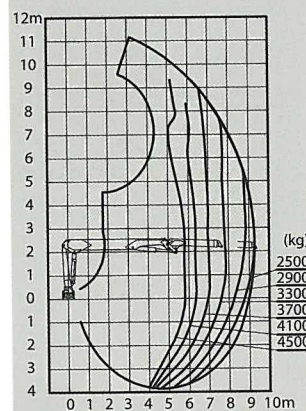


L27.94K

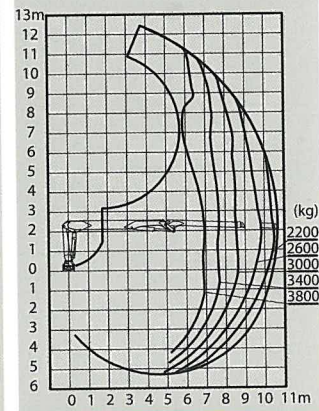
L27.92KDT



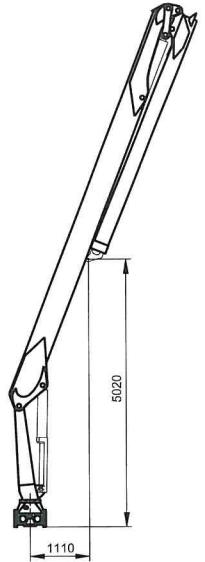
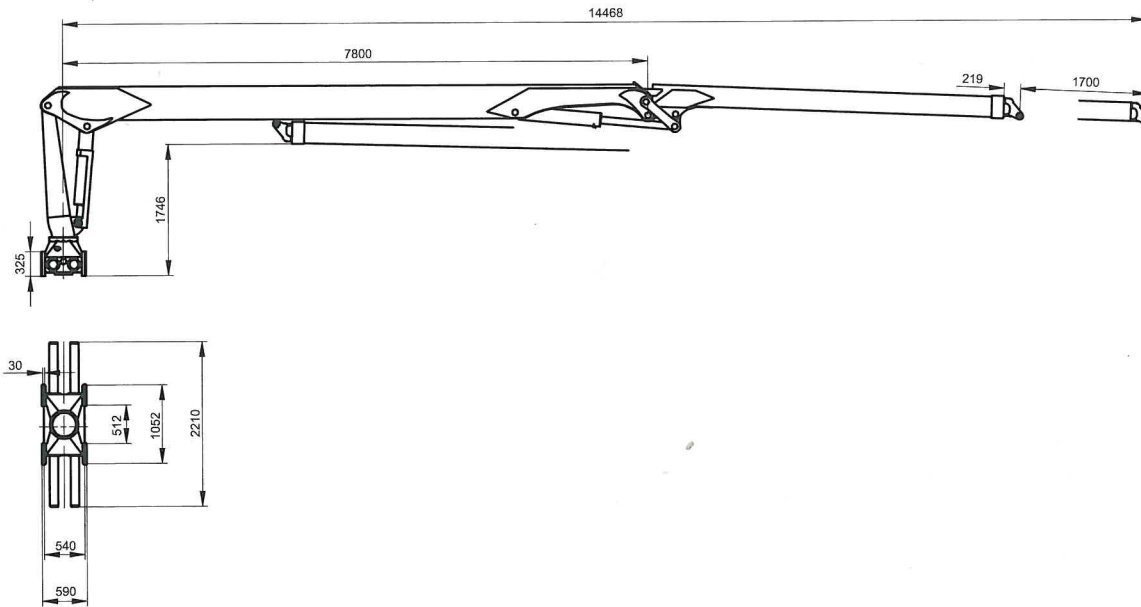
L27.94K



L27.107K

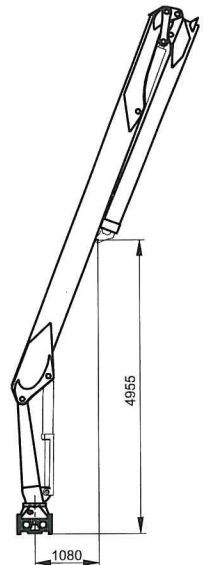
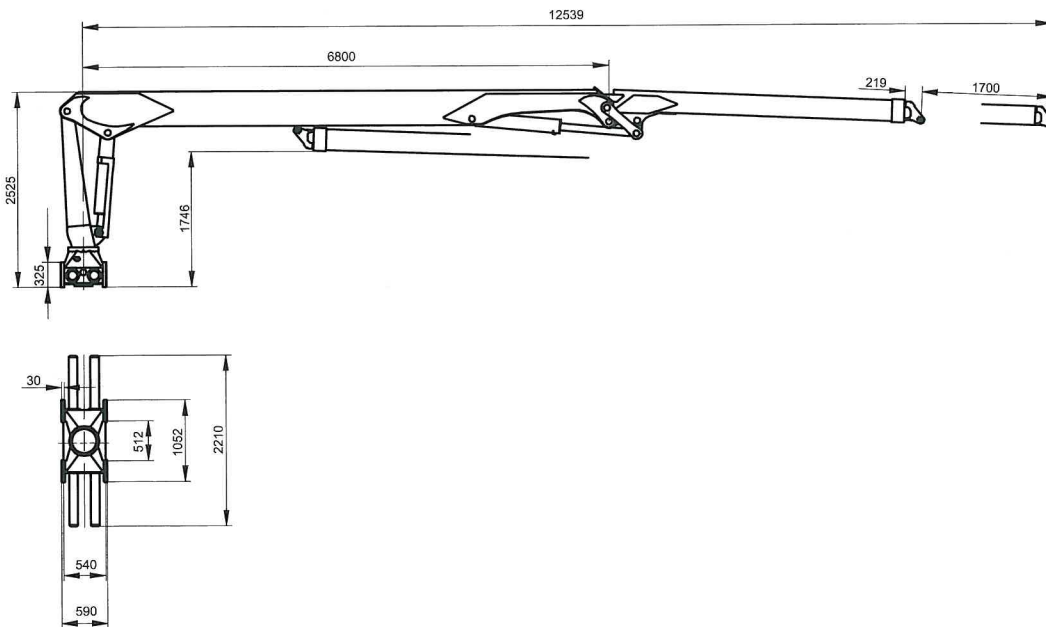


L27.145K



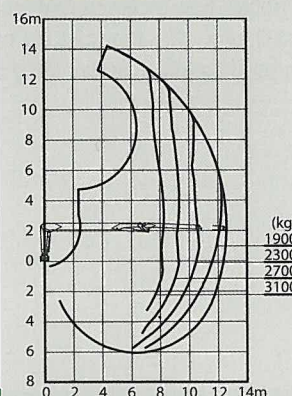
L27.145K

L27.125K



L27.125K

L27.125K



L27.145K

