



# SPIERINGS

## MOBILE CRANES

Make: **SPIERINGS**

Type: **SK498-AT4**

### Crane specification

Serial Number **498xxx**

Year of Construction **20xx**

Crane group : 3 as per NEN 2018  
Loadspectrum : 2 as per NEN 2018  
Classification : A as per NEN 2018  
Stability : as per NEN 2022

Max. load

**8,0 tonne**

Max. radius  
with max. load

**12,85 m**

Max. capacity

**103 tm**

Max.  
jib length

**44 m**

#### Speed Jib horizontal / jib 30° luffed

	m/min	kg		
	18	8000		0 - 70 m/min
	27	4000		0-0,9 rpm
	40	2000		
	60	0		

All motions with hydraulic proportional controls.  
Luffing the jib 30° can be controlled from crane cab or by remote control.  
The crane should be folded in at wind force 9 (Bf) (21 m/sec) or when not in use for a longer period.

Counterweight crane: 9500 kg.  
Continues slewing (360°) with outriggers out and support pads down.  
Crane can be driven in its erected position under special conditions (refer user guide).

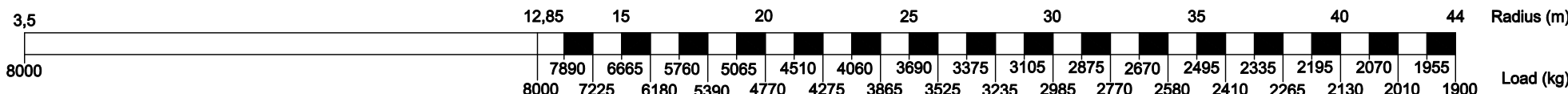
Rated lift capacity is net capacity.  
Always two parts of line.  
Max. line pull force: 4000 kg.  
Operating temperature range from: -15°C till + 40°C.  
Sail area of the load max.: 1,0 m²/ ton.

Outrigger positioned according to lifting chart  
Outrigger support base : **6,925 m x 6,85 m**.  
Operation allowed up to wind force 8 Bf (17 m/sec).  
Outrigger support base : **6,925 m x 5,15 m**.  
Operation allowed up to wind force 8 Bf (17 m/sec).  
**Max. outrigger force: 360 kN.**

### LIFTING CHART outrigger support base **6,925 m x 6,85 m** up to wind force 8 on the Beaufort scale (17 m/sec)

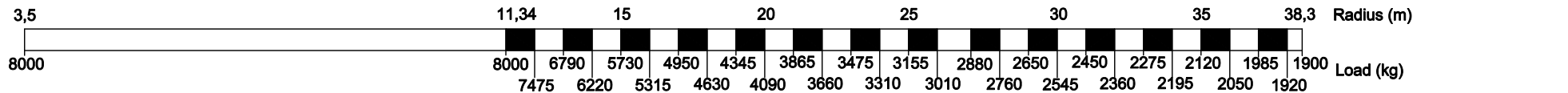
#### Jib horizontal

Hook height 25,3 m (height under the jib 27,3 m)



#### Jib 30° luffed

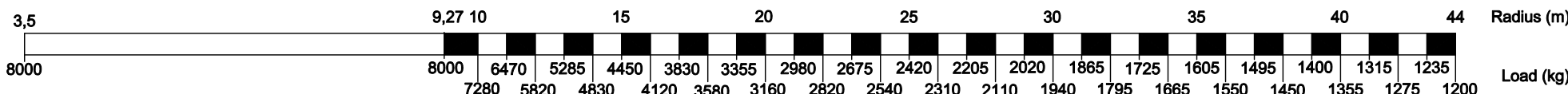
Hook height (m) 30,9 33 35,9 38,8 41,7 44,6 46,5



### LIFTING CHART outrigger support base **6,925 m x 5,15 m** up to wind force 8 on the Beaufort scale (17 m/sec)

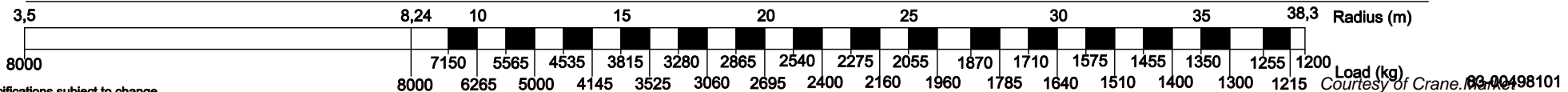
#### Jib horizontal

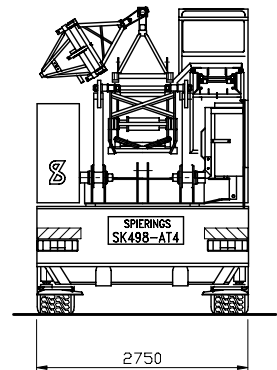
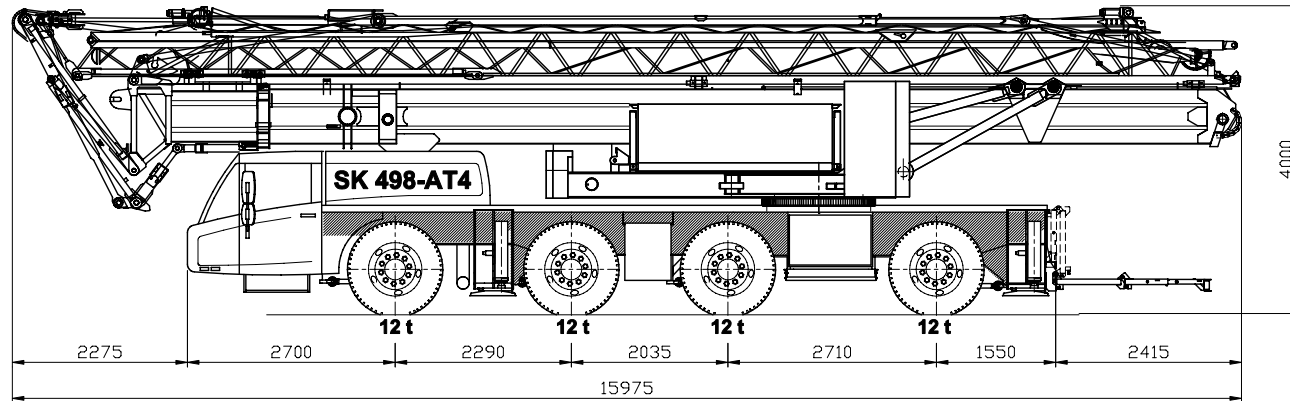
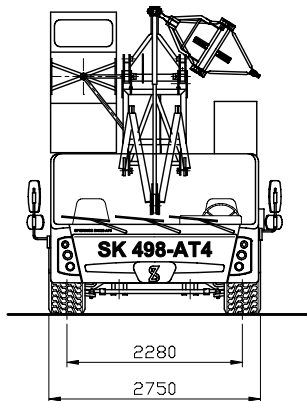
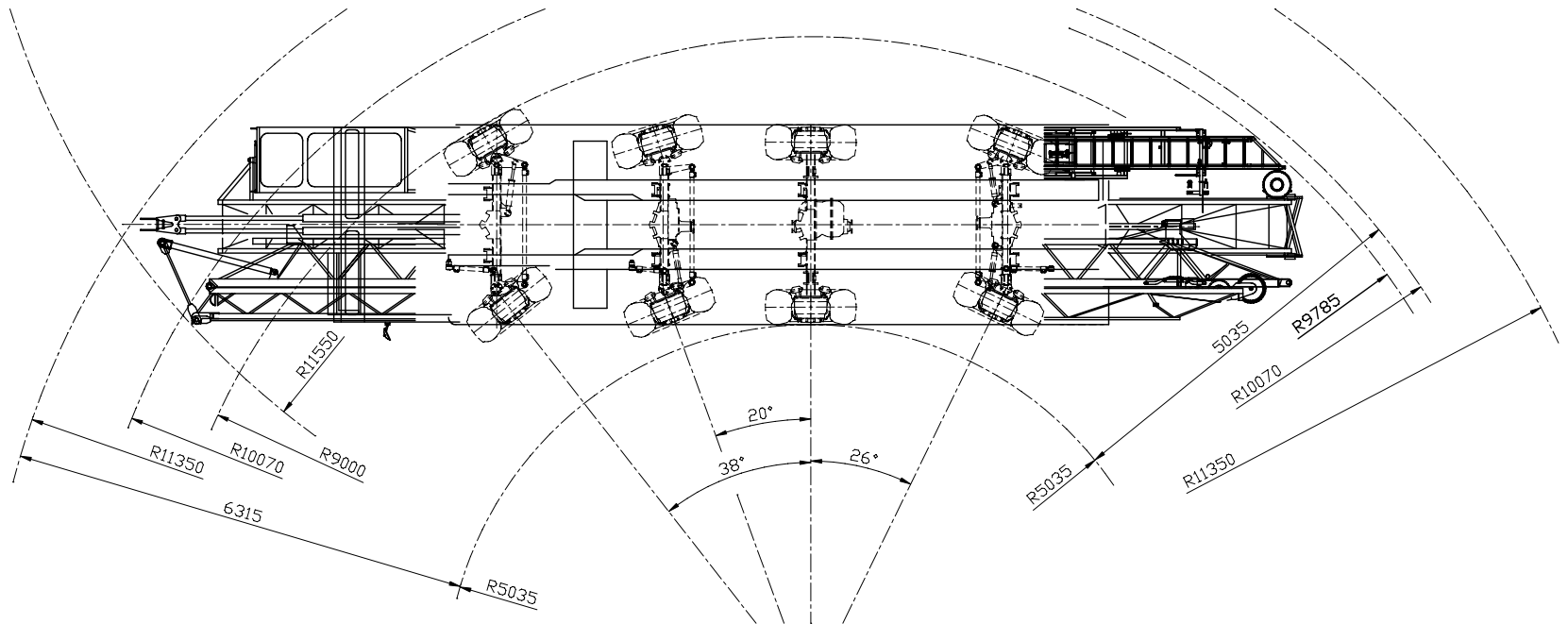
Hook height 25,3 m (height under the jib 27,3 m)



#### Jib 30° luffed

Hook height (m) 29,1 30,1 33 35,9 38,8 41,7 44,6 46,5





# **SPIERINGS HYDRAULIC FOLDING CRANE** **SK 498 - AT4**

**SPIERINGS**  
MOBILE CRANES

Merwedestraat 15  
5347 KZ Oss NL  
Tel. +31 (0)412-626964  
Fax +31 (0)412-645299  
[www.spieringscranes.com](http://www.spieringscranes.com)

Courtesy of **CraneMarket**

83-00496102

Overall weight: 48000 kg

Specifications subject to change

# SPIERINGS

## HYDRAULIC FOLDING CRANE

### SK498-AT4

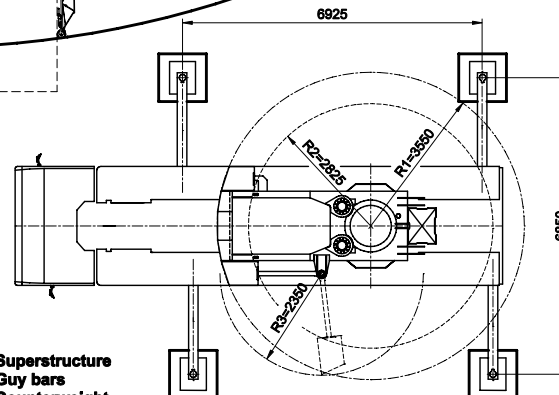
498xxx

## Erection procedure of the crane

Max. outrigger force : 360 kN  
 Outrigger support pads : 750x600 mm  
 Ground pressure : 0,80 N/mm<sup>2</sup>  
 Jib can be unfolded through 360°  
 Luffing the jib 30° can be controlled from the crane cab or remote control

Outrigger support plates : 1100x1100 mm  
 surface : 1,21 m<sup>2</sup>  
 Ground pressure : 0,30 N/mm<sup>2</sup>

Hook height (m)



R1 : Superstructure  
 R2 : Guy bars  
 R3 : Counterweight

Radius (m)

10 5 0 5 10 15 20 25 30 35 40 45 50

Specifications subject to change

**SPIERINGS**  
**MOBILE CRANES**

Merwedestraat 15  
 5347 KZ Oss NL  
 Tel. +31 (0)412-626964  
 Fax +31 (0)412-645299  
[www.spieringcranes.com](http://www.spieringcranes.com)

Courtesy of [www.cranemarket.nl](http://www.cranemarket.nl) 83-00498103

# SPIERINGS

## HYDRAULIC FOLDING CRANE

### SK 498 - AT4

498xxx

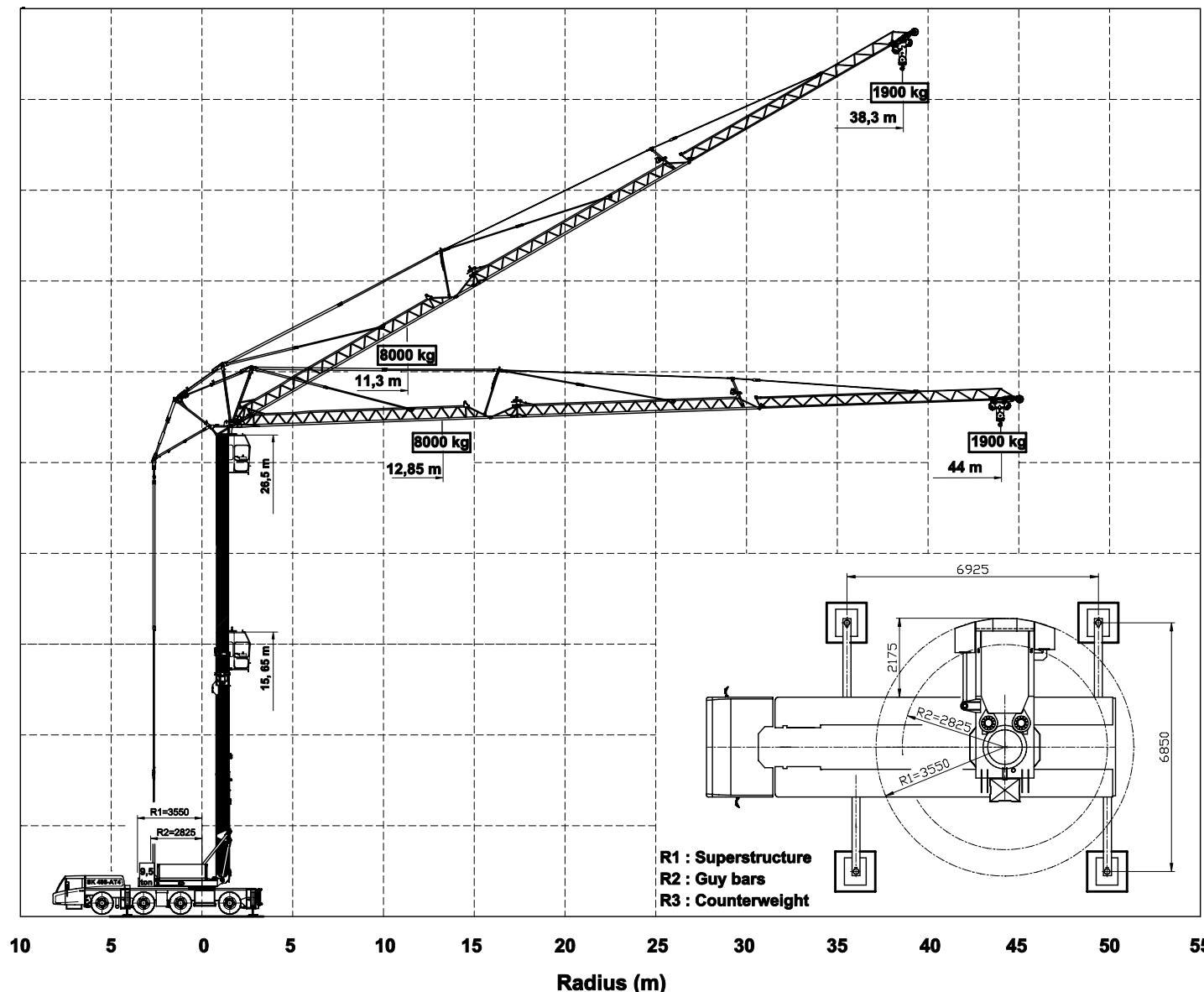
#### Hoisting Specifications

#### Outrigger support base

6,925 m x 6,85 m

Hook height (m)

Radius (m)



# SPIERINGS

## MOBILE CRANES

Merwedestraat 15

5347 KZ Oss NL

Tel. +31 (0)412-626964

Fax +31 (0)412-645299

[www.spierscranes.com](http://www.spierscranes.com)

# SPIERINGS

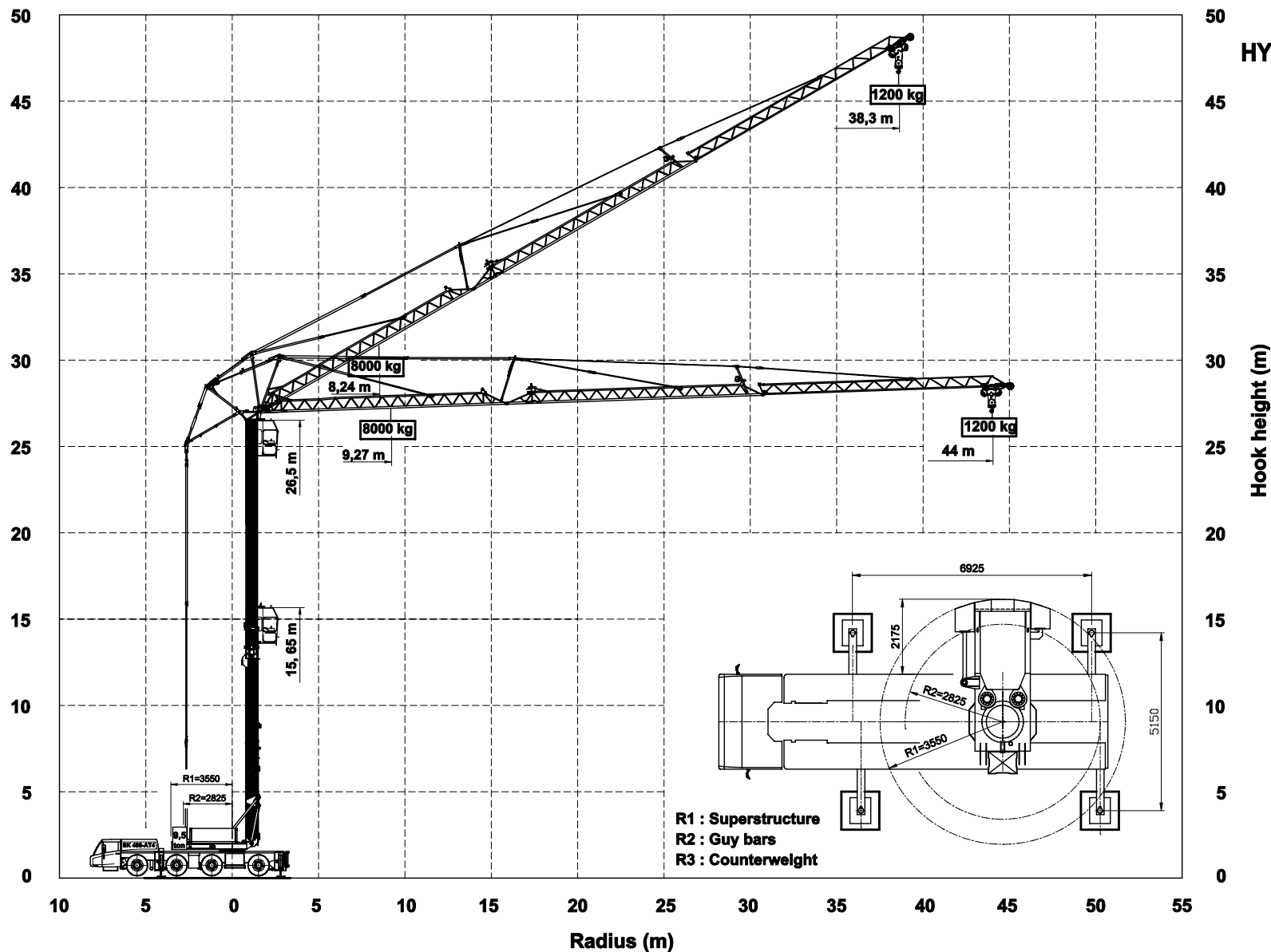
## HYDRAULIC FOLDING CRANE

### SK 498 - AT4

498xxx

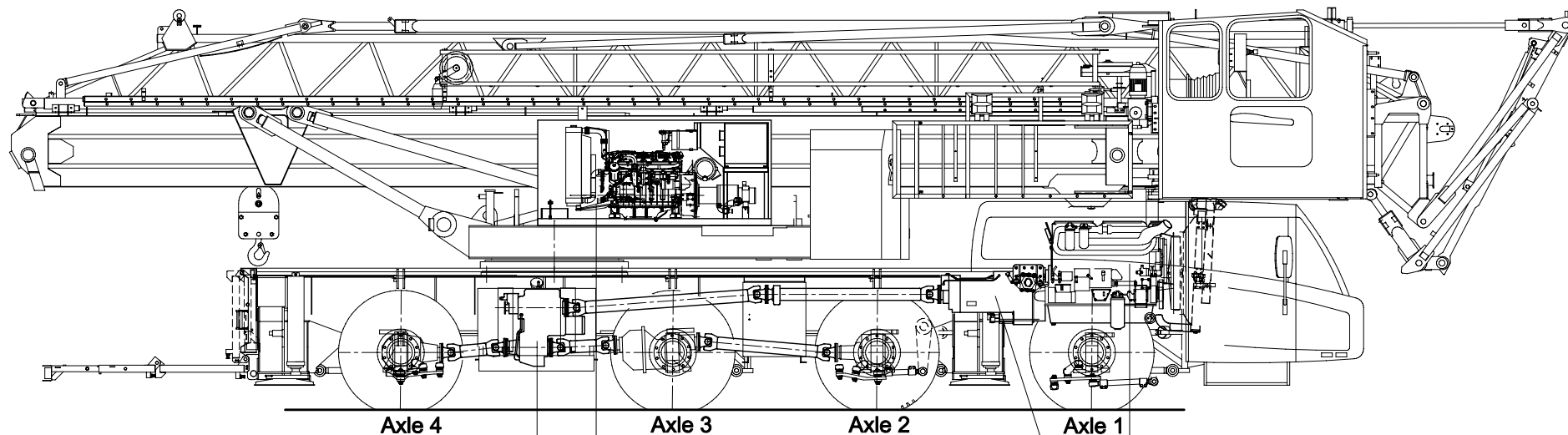
Hoisting Specifications  
Outrigger support base

6,925 m x 5,15 m



**SPIERINGS**  
MOBILE CRANES

Merwedestraat 15  
5347 KZ Oss NL  
Tel. +31 (0)412-626964  
Fax +31 (0)412-645299  
[www.spieringscranes.com](http://www.spieringscranes.com)



Transferbox  
STEYR VG2001/396  
Road gear  $i=0,89$   
Off road gear  $i=1,54$

Superstructure:  
John Deere 4045HF475  
Power: 129 kW (2200 rpm)  
Torque: 700 Nm (1400 rpm)

Gearbox:  
ZF 12AS2300  
Automatic  
+ Intarder

Carrier Diesel Engine :  
Euro IV  
DAF: MX 300 (12,9 ltr)  
Power: 300 kW (1900 rpm)  
Torque: 2050 Nm (1500 rpm)

Axle 1 :Steer axle

Axle 2 :Steer axle, driven (end reduction  $i=7,29$ )

Axle 3 :Driven (end reduction  $i=7,29$ )

Axle 4 :Steer axle, driven (end reduction  $i=7,29$ )

Tyres

Suspension: hydro-pneumatic on all axles, stroke cyl.

Max. speed carrier

Min. speed carrier (diesel engine 1000 rpm)

Overall weight

: 445/75 R22,5

: 247 mm

: 82 km/h

: 1,6 km/h

: 48.000 kg.

# **DRIVE TRAIN SPIERINGS FOLDING CRANE** **SK498-AT4**

**SPIERINGS**  
**MOBILE CRANES**

Merwedestraat 15  
5347 KZ Oss NL  
Tel. +31 (0)412-626964  
Fax +31 (0)412-645299  
[www.spieringscranes.com](http://www.spieringscranes.com)

# SPIERINGS

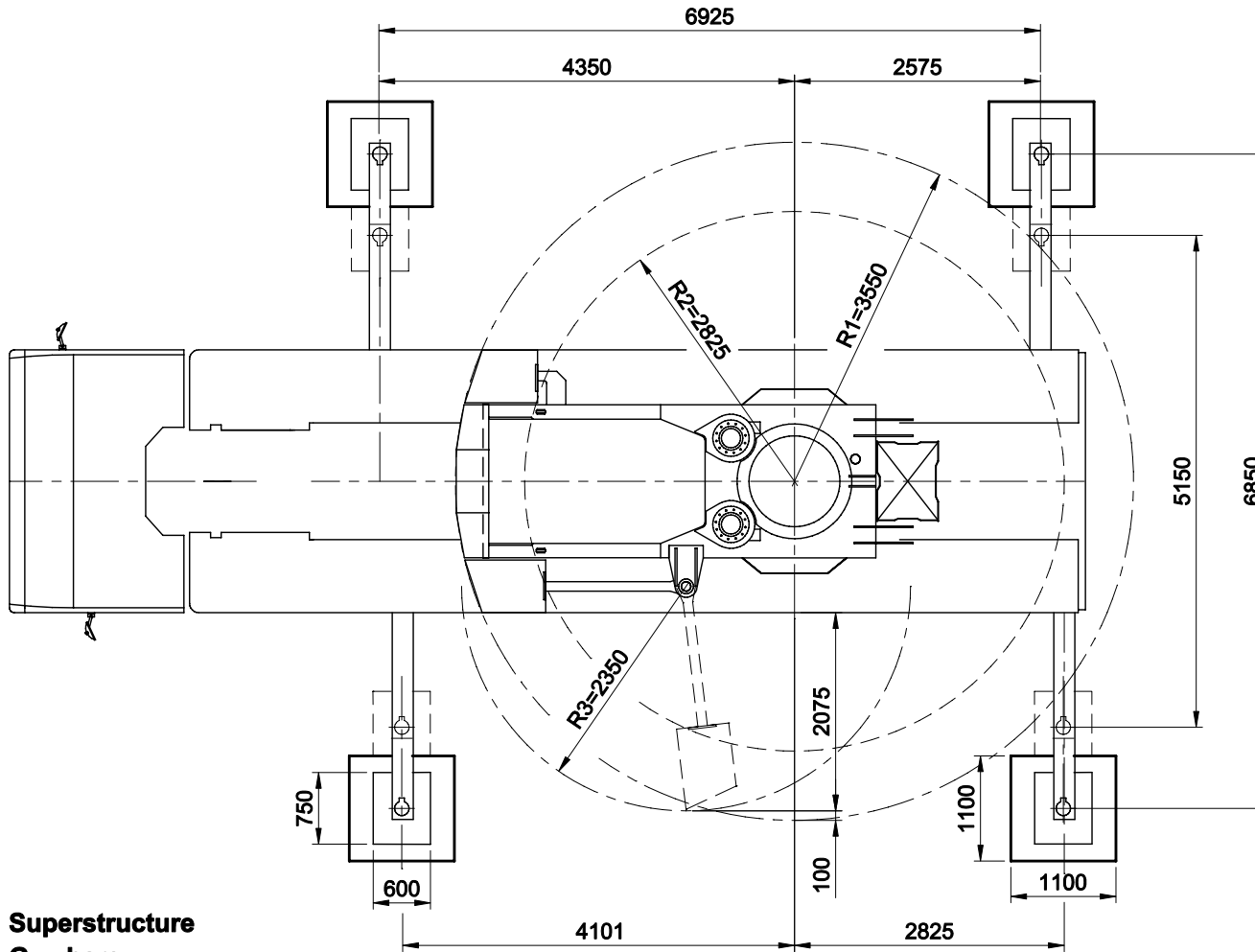
## HYDRAULIC FOLDING CRANE

### SK 498 - AT4

498xxx

#### Overzicht afstempeling

Max. outrigger force	360 kN
Outrigger support pads	750x600 mm
Ground pressure	0,80 N/mm <sup>2</sup>
Outrigger support plates	1100x1100 mm
Surface	1,21 m <sup>2</sup>
Ground pressure	0,30 N/mm <sup>2</sup>



**R1 : Superstructure**  
**R2 : Guy bars**  
**R3 : Counterweight**

**SPIERINGS**  
**MOBILE CRANES**

Merwedestraat 15  
 5347 KZ Oss NL  
 Tel. +31 (0)412-626964  
 Fax +31 (0)412-645299  
[www.spieringscranes.com](http://www.spieringscranes.com)