



FOR NEW EQUIPMENT SALES, CALL
866.966.2969
TO SPEAK WITH AN ALTEC REPRESENTATIVE
or visit us online at altec.com

 **Altec**
TELESCOPIC CRANE

Courtesy of CraneMarket

STANDARD FEATURES

- Altec LMAP (Load Moment & Area Protection) System
 - » Rated Capacity Limiter
 - » Displays: Boom Length, Boom Angle, Load on Hook, Percent of Rated Capacity
 - » Operator Defined Audible Alarm Set-Points for Boom Angle, Length and Rotational Position
- Outrigger Boom Interlock System
- Outrigger Motion Alarm
- Winch Drum Rotation Indicator
- Anti-Two Block Device
- Rotation Resistant Wire Rope
- Winch Control at Load Hook Stow Point
- Hydraulic Oil Cooling System

OPTIONS

- 1-Piece Jib: 26 ft (7.9 m)
- 2-Piece Jib: 26 ft (7.9 m) Retracted, 44 ft (13.4 m) Extended
- Load Block
- Load Block and Ball Storage on Deck of Crane
- ASME B30.23 Personnel Lifting Package
 - » 2-Man Fixed Steel Platform, 800 lbs (362.9 kg) capacity
 - » Radio Remote Controls
 - » Fall Protection
- ASME B30.23 Compliant Test Weight Package
- Hydraulic Tool Circuit at Tail Shelf

Recommended equipment, available through Altec Supply, include wheel chocks and outrigger pads.

CRANE SPECIFICATIONS

Maximum Lift Capacity	47,000 lb (21,319kg)
Boom Length (4-Section)	95 ft (29 m)
Powered Sheave Height	105 ft (32 m)
Maximum Sheave Height with 2-Stage Jib	149 ft (45.4 m)
Stowed Travel Height	13.25 ft (4 m)
Vehicle Travel Length	39.6 ft (12.1 m)
3-Position, Sequential Out and Down Outriggers	
Full Span	18.5 ft (5.6 m)
Mid Span	14 ft (4.3 m)
Short Span	9 ft (2.7 m)
Two Speed Winch Capacity	12,000 lb (5,443 kg)
Control System	Pilot-Operated, Hydraulic
ASME B30.5 Compliant	

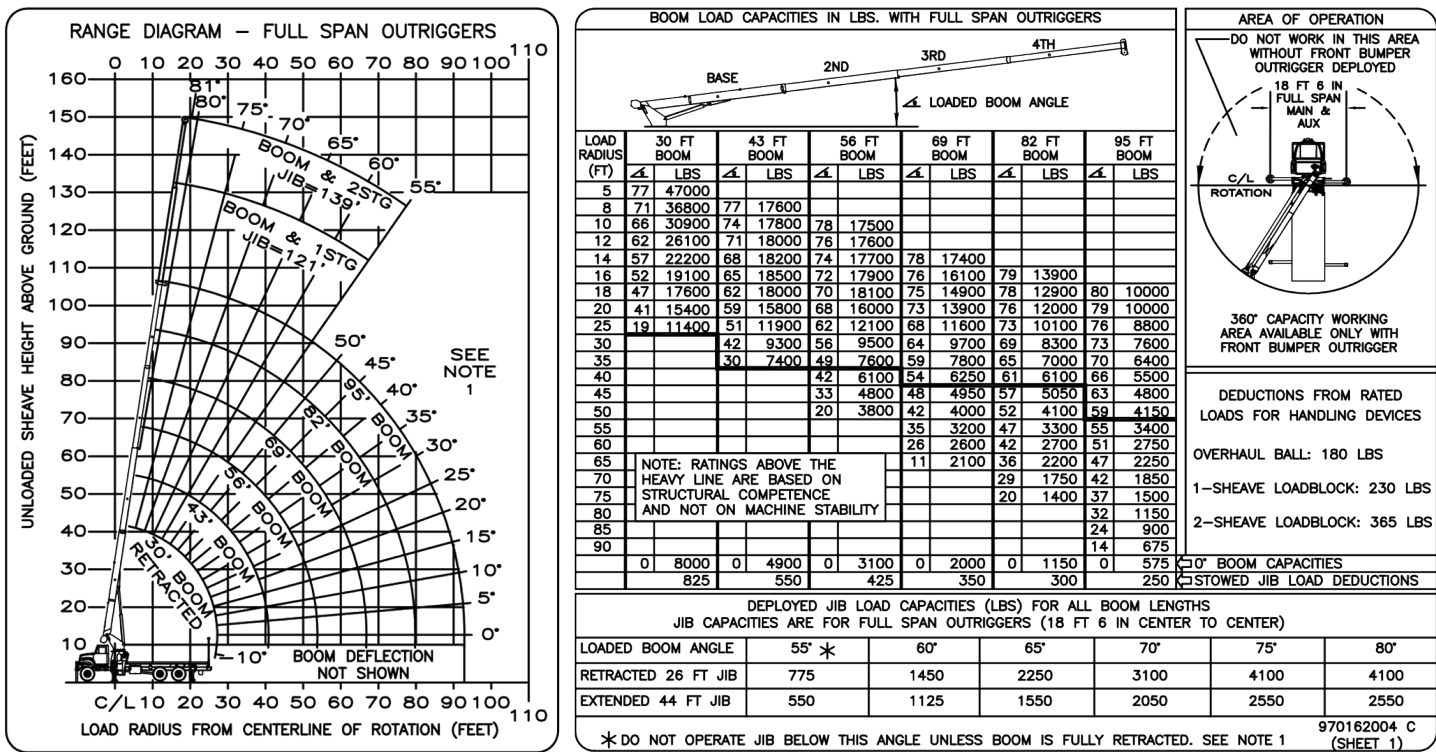
LOAD MOMENT AND AREA PROTECTION



The ability to provide vital data to operators, continuously monitor crane operation and send alerts of potential overloads, while maximizing crane work capacity, is invaluable. The LMAP system offers customers and operators easy operation, fast calibration and reliable technology.

UNIT		RECOMMENDED CHASSIS DIM				MINIMUM RECOMMENDED CHASSIS SPECIFICATIONS				
Model	Rear Axle	CT (in)	WB (in)	AF (in)	Rear Axle Spread (in)	Front Axle Rating (lb)	Rear Axle Rating (lb)	GVWR (lb) W	Frame Sec Modulus (in ^3)	Frame RBM (in-lb)
AC23-95B	Tandem	193	262	127	54	16,000	34,000	50,000	consult factory	
AC23-95R	Tandem	173	247	114	52	16,000	34,000	50,000	consult factory	
AC23-95S	Tandem	173	247	114	52	16,000	34,000	50,000	consult factory	

LOAD CHART - FULL SPAN OUTRIGGERS



Note 1: When jib is erected, boom must be fully retracted before lowering below minimum boom with jib angles. Retracted boom with jib has no lifting capacity below a 50 degree angle with full span outriggers and below a 65 degree angle not shown on jib load rating chart.



DUAL STAND-UP WALK THROUGH CONTROL STATIONS

Dual walk-through controls for the AC23-95B and AC23-95R models allow the operator the ability to work from either side of the bed for best visibility depending on application providing an unobstructed view of the bed and work area. In addition, the hand guards assist in providing three points of contact for users as they exit or enter the control station and also help prevent inadvertent actuation of controls.

ALTEC OPTI-VIEW® RIDING SEAT

As standard equipment on the AC23-95S, Altec's Opti-View riding seat control station maximizes the operator's visibility of the worksite. The operator is provided with safe and confident access to the controls all while maintaining operator comfort.



OUTRIGGER CONTROLS AT TAILSHELF

Outrigger controls at the tailshef allow the operator to access the controls from either side of the bed for best visibility of the contact surface which reduces the chance of a crushing hazard while deploying and retracting outriggers.



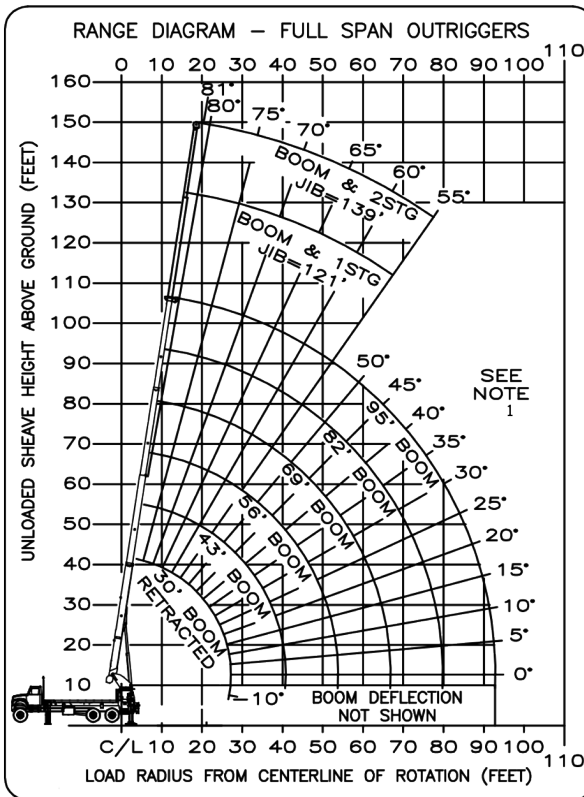
LOWER WINCH CONTROL

The lower winch control helps prevent boom damage by reducing the flow pressure to the winch during stowage. The operator can control the load block or ball while winching up or down during set up and stowage without the need to access the upper control station. Reducing slip/trip/fall hazard exposure.



AC23-95R | LOAD CHARTS

FULL SPAN OUTRIGGERS



BOOM LOAD CAPACITIES IN LBS. WITH FULL SPAN OUTRIGGERS

LOAD RADIUS (FT)	30 FT BOOM	43 FT BOOM	56 FT BOOM	69 FT BOOM	82 FT BOOM	95 FT BOOM
5	77 47000	77 17600				
8	71 36800	77 17600				
10	66 30900	74 17800	78 17500			
12	62 26100	71 18000	76 17600			
14	57 22200	68 18200	74 17700	78 17400		
16	52 19100	65 18500	72 17900	76 16100	79 13900	
18	47 17600	62 18000	70 18100	75 14900	78 12900	80 10000
20	41 15400	59 15800	68 16000	73 13900	76 12000	79 10000
25	19 11400	51 11900	62 12100	68 11600	73 10100	76 8800
30		42 9300	56 9500	64 9700	69 8300	73 7600
35		30 7400	49 7600	59 7800	65 7000	70 6400
40			42 6100	54 6250	61 6100	66 5500
45			33 4800	48 4950	57 5050	63 4800
50			20 3800	42 4000	52 4100	59 4150
55				35 3200	47 3300	55 3400
60				26 2600	42 2700	51 2750
65				11 2100	36 2200	47 2250
70					29 1750	42 1850
75					20 1400	37 1500
80						32 1150
85						24 900
90						14 675
0	8000	0 4900	0 3100	0 2000	0 1150	0 575
	825	550	425	350	300	250

NOTE: RATINGS ABOVE THE HEAVY LINE ARE BASED ON STRUCTURAL COMPETENCE AND NOT ON MACHINE STABILITY

AREA OF OPERATION

360° CAPACITY WORKING AREA AVAILABLE WITH ALL OUTRIGGERS IN FULL SPAN

DEDUCTIONS FROM RATED LOADS FOR HANDLING DEVICES

OVERHAUL BALL: 180 LBS

1-SHEAVE LOADBLOCK: 230 LBS

2-SHEAVE LOADBLOCK: 365 LBS

50° BOOM CAPACITIES

STOWED JIB LOAD DEDUCTIONS

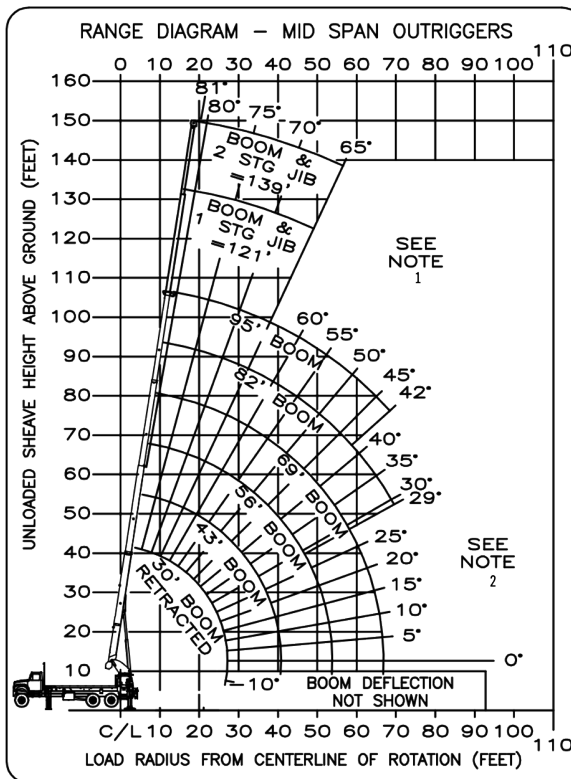
DEPLOYED JIB LOAD CAPACITIES (LBS) FOR ALL BOOM LENGTHS

JIB CAPACITIES ARE FOR FULL SPAN OUTRIGGERS (18 FT 6 IN CENTER TO CENTER)

LOADED BOOM ANGLE	55° *	60°	65°	70°	75°	80°
RETRACTED 26 FT JIB	775	1450	2250	3100	4100	4100
EXTENDED 44 FT JIB	550	1125	1550	2050	2550	2550

* DO NOT OPERATE JIB BELOW THIS ANGLE UNLESS BOOM IS FULLY RETRACTED. SEE NOTE 1

MID SPAN OUTRIGGERS



BOOM LOAD CAPACITIES IN LBS. WITH MID SPAN OUTRIGGERS

LOAD RADIUS (FT)	30 FT BOOM	43 FT BOOM	56 FT BOOM	69 FT BOOM	82 FT BOOM	95 FT BOOM
5	77 46000	77 17600				
8	71 35000	77 17600				
10	66 30900	74 17800	78 17500			
12	62 26100	71 18000	76 17600			
14	57 22200	68 18200	74 17700	78 17400		
16	52 18600	65 18500	72 17900	76 16100	79 13900	
18	47 14500	62 15200	70 15500	75 14900	78 12900	80 10000
20	41 11700	59 12300	68 12600	73 12800	76 12000	79 10000
25	21 7500	51 8100	62 8300	68 8500	73 8600	76 8700
30		42 5600	56 5800	64 6000	69 6100	73 6200
35		30 4000	49 4200	59 4400	65 4500	69 4600
40			42 3100	53 3300	61 3400	66 3400
45			33 2300	48 2450	56 2550	62 2600
50			20 1650	41 1800	52 1900	58 2000
55				34 1300	47 1400	55 1500
60				25 900	42 1000	51 1075
65				10 550	36 675	46 725
70					29 400	42 450
75						
80						
85						
90						
0	6600	0 2900	0 1350	0 500	SEE NOTE 9	0 250
	825	550	425	350	300	250

NOTE: RATINGS ABOVE THE HEAVY LINE ARE BASED ON STRUCTURAL COMPETENCE AND NOT ON MACHINE STABILITY

AREA OF OPERATION

360° CAPACITY WORKING AREA AVAILABLE WITH ALL OUTRIGGERS IN MID SPAN

DEDUCTIONS FROM RATED LOADS FOR HANDLING DEVICES

OVERHAUL BALL: 180 LBS

1-SHEAVE LOADBLOCK: 230 LBS

2-SHEAVE LOADBLOCK: 365 LBS

50° BOOM CAPACITIES

STOWED JIB LOAD DEDUCTIONS

DEPLOYED JIB LOAD CAPACITIES (LBS) FOR ALL BOOM LENGTHS

JIB CAPACITIES ARE FOR MID SPAN OUTRIGGERS (14 FT 0 IN MIN CENTER TO CENTER)

LOADED BOOM ANGLE	65° *	70°	75°	80°
RETRACTED 26 FT JIB	800	1925	3900	4100
EXTENDED 44 FT JIB	550	1500	2550	2550

* DO NOT OPERATE JIB BELOW THIS ANGLE UNLESS BOOM IS FULLY RETRACTED. SEE NOTE 1

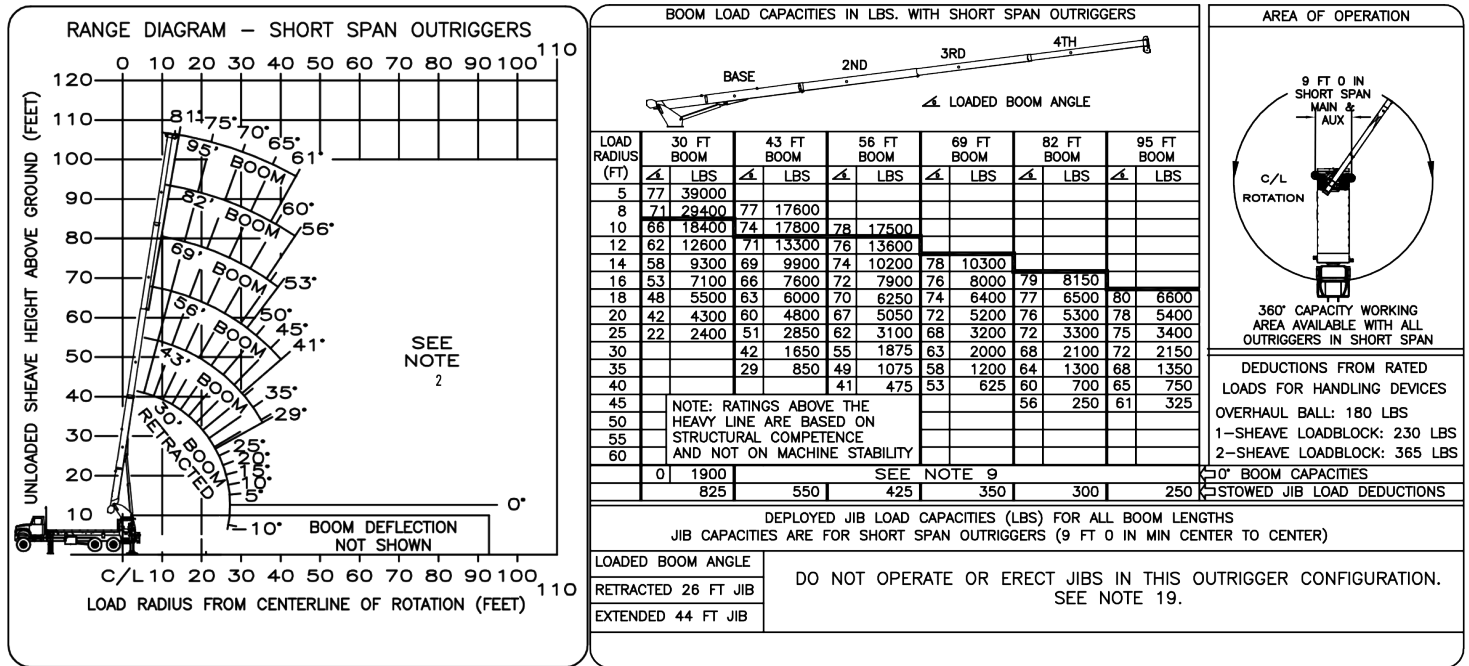
Note 1: When jib is erected, boom must be fully retracted before lowering below minimum boom with jib angles. Retracted boom with jib has no lifting capacity below a 50 degree angle with full span outriggers and below a 65 degree angle not shown on jib load rating chart.

Note 2: Do not lower boom into this area, instability may occur. Hydraulic pressure may not allow raising the boom without retracting boom first.



AC23-95R | LOAD CHARTS

SHORT SPAN OUTRIGGERS

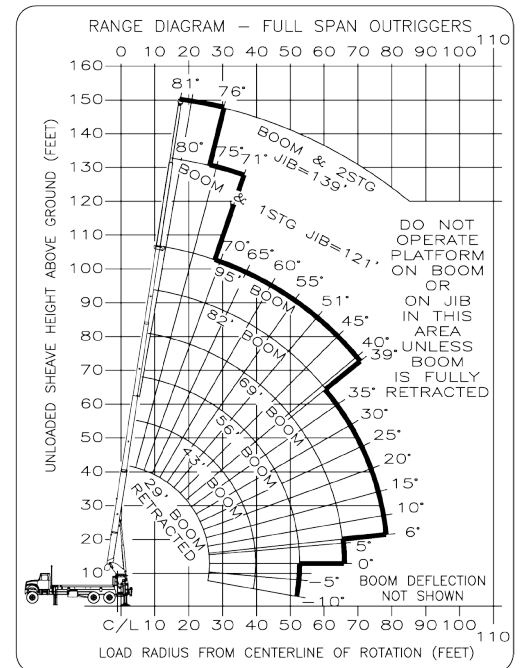


Note 1: When operating the crane in the "Short Span" mode, the outrigger beam pins must be properly engaged. Do not operate or erect jibs in "Short Span" outrigger configurations.
Note 2: Do not lower boom into this area, instability may occur. Hydraulic pressure may not allow raising the boom without retracting boom first.

WINCH CHART

1 PART LOAD LINE	2 PART LOAD LINE	3 PART LOAD LINE	4 PART LOAD LINE	5 PART LOAD LINE	CAUTION OPERATOR AIDS MUST BE IN GOOD OPERATING CONDITION BEFORE OPERATING CRANE. REFER TO OWNERS MANUAL. KEEP AT LEAST 3 WRAPS OF LOADLINE ON DRUM AT ALL TIMES. USE ONLY 9/16" DIAMETER IWRC OR ROTATION RESISTANT WIRE ROPE WITH 37,000 LBS. MIN. BREAKING STRENGTH ON THIS MACHINE.
LOADS UP TO	LOADS UP TO	LOADS UP TO	LOADS UP TO	LOADS UP TO	
10,571 LBS. IWRC XXIP	21,142 LBS. IWRC XXIP	31,713 LBS. IWRC XXIP	42,284 LBS. IWRC XXIP	47,000 LBS. IWRC XXIP	
7,400 LBS. ROT. RESISTANT WIRE ROPE	14,800 LBS. ROT. RESISTANT WIRE ROPE	22,200 LBS. ROT. RESISTANT WIRE ROPE	29,600 LBS. ROT. RESISTANT WIRE ROPE	37,000 LBS. ROT. RESISTANT WIRE ROPE	
95 FT + 44 FT JIB	95 FT BOOM	74 FT BOOM	56 FT BOOM	45 FT BOOM	
MAXIMUM BOOM LENGTH AT MAXIMUM ELEVATION WITH RIGGING SHOWN TO REACH THE GROUND					
SEE OWNERS MANUAL FOR OTHER REEVING OPTIONS					
With certain boom and hoist tackle combinations, maximum capacities may not be obtainable with standard cable lengths.					

PLATFORM CHART

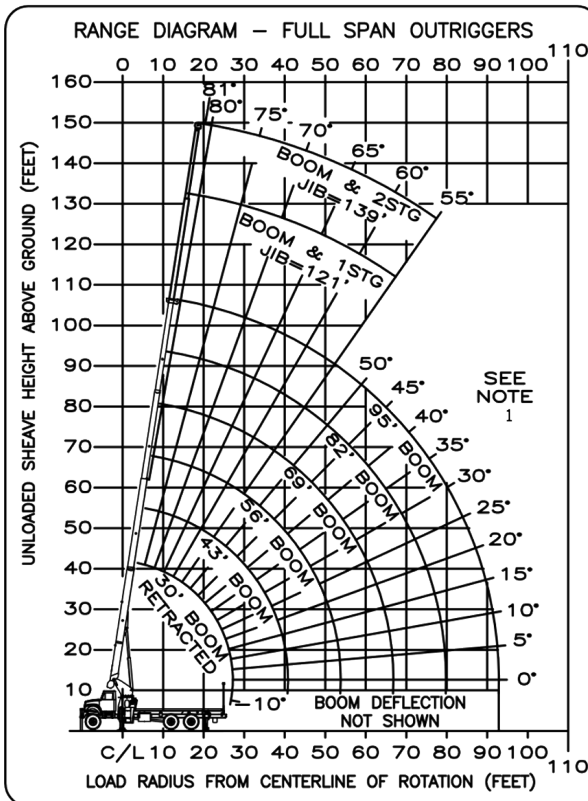


Altec
Altec.com/cranes
866.966.2969
sales@altec.com

For more complete information on Altec products and services, visit us on the web at www.altec.com. Material and specifications are subject to change without notice. Featured units in photos may include optional features. Please contact an Altec representative for all available options. Charts published herein are intended to be a guide only and should not be construed to warrant application for lifting purposes. Consult supplied operation manual for further details. Altec® and the Altec logo are registered trademarks of Altec Inc. in the United States and various other countries and may not be used without permission.
© 2014 Altec Inc. All Rights Reserved.

AC23-95B | LOAD CHARTS

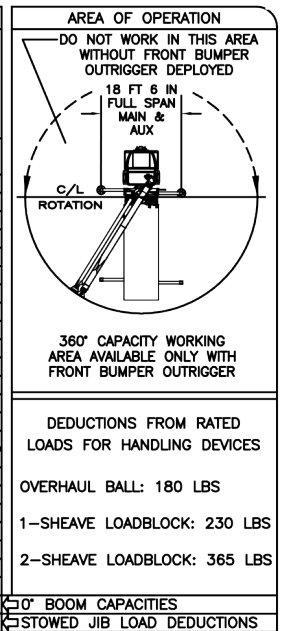
FULL SPAN OUTRIGGERS



BOOM LOAD CAPACITIES IN LBS. WITH FULL SPAN OUTRIGGERS

LOAD RADIUS (FT)	30 FT BOOM	43 FT BOOM	56 FT BOOM	69 FT BOOM	82 FT BOOM	95 FT BOOM
5	77 47000	77 17600				
8	71 36800	74 17800	78 17500			
10	66 30900	71 18000	76 17600			
12	62 26100	68 18200	74 17700	78 17400		
14	57 22200	65 18500	72 17900	76 16100	79 13900	
16	52 19100	62 18800	70 18100	75 14900	78 12900	80 10000
18	47 17600	59 15800	68 16000	73 13900	76 12000	79 10000
20	41 15400	56 16200	66 16200	71 13900	74 10100	77 8800
25	19 11400	51 11900	62 12100	68 11600	73 10100	76 8800
30		42 9300	56 9500	64 9700	69 8300	73 7600
35		30 7400	49 7600	59 7800	65 7000	70 6400
40			42 6100	54 6250	61 6100	66 5500
45			33 4800	48 4950	57 5050	63 4800
50			20 3800	42 4000	52 4100	59 4150
55				35 3200	47 3300	55 3400
60				26 2600	42 2700	51 2750
65				11 2100	36 2200	47 2250
70					29 1750	42 1850
75					20 1400	37 1500
80						32 1150
85						24 900
90						14 675
0	8000	4900	3100	2000	1150	575
	825	550	425	350	300	250

NOTE: RATINGS ABOVE THE HEAVY LINE ARE BASED ON STRUCTURAL COMPETENCE AND NOT ON MACHINE STABILITY



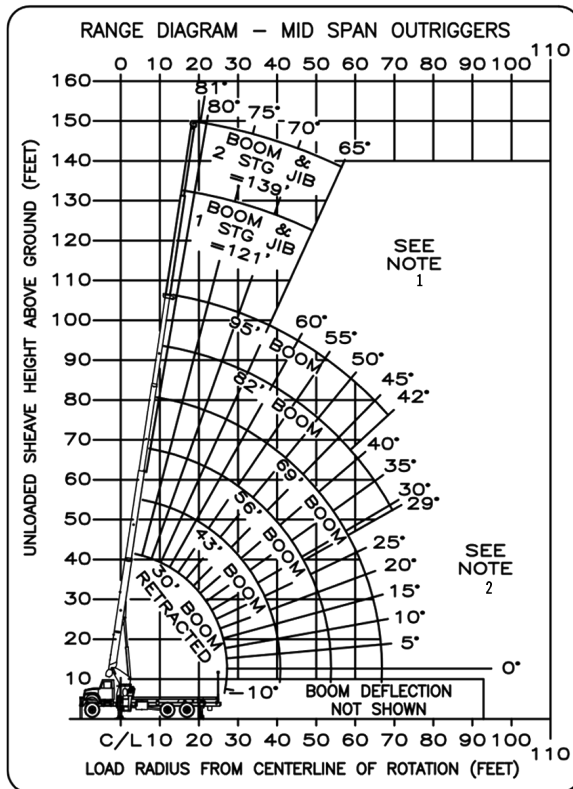
DEPLOYED JIB LOAD CAPACITIES (LBS) FOR ALL BOOM LENGTHS

JIB CAPACITIES ARE FOR FULL SPAN OUTRIGGERS (18 FT 6 IN CENTER TO CENTER)

LOADED BOOM ANGLE	55° *	60°	65°	70°	75°	80°
RETRACTED 26 FT JIB	775	1450	2250	3100	4100	4100
EXTENDED 44 FT JIB	550	1125	1550	2050	2550	2550

* DO NOT OPERATE JIB BELOW THIS ANGLE UNLESS BOOM IS FULLY RETRACTED. SEE NOTE 1

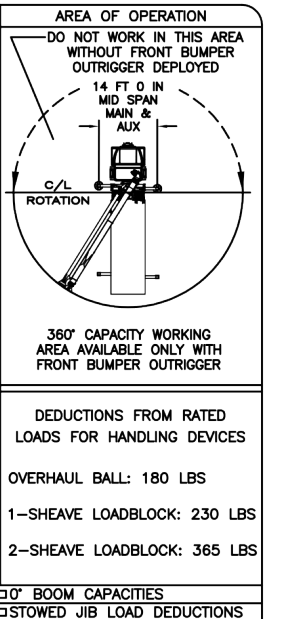
MID SPAN OUTRIGGERS



BOOM LOAD CAPACITIES IN LBS. WITH MID SPAN OUTRIGGERS

LOAD RADIUS (FT)	30 FT BOOM	43 FT BOOM	56 FT BOOM	69 FT BOOM	82 FT BOOM	95 FT BOOM
5	77 46000	77 17600				
8	71 35000	74 17800	78 17500			
10	66 30900	71 18000	76 17600			
12	62 26100	68 18200	74 17700	78 17400		
14	57 22200	65 18500	72 17900	76 16100	79 13900	
16	52 18600	62 18800	70 18100	75 14900	78 12900	80 10000
18	47 14500	59 15200	68 16000	73 13900	76 12000	79 10000
20	41 11700	56 16200	66 16200	71 13900	74 10100	77 8800
25	21 7500	51 8100	62 8300	68 8500	73 8600	76 8700
30		42 5600	56 5800	64 6000	69 6100	73 6200
35		30 4000	49 4200	59 4400	65 4500	69 4600
40			42 3100	53 3300	61 3400	66 3400
45			33 2300	48 2450	56 2550	62 2600
50			20 1650	41 1800	52 1900	58 2000
55				34 1300	47 1400	55 1500
60				25 900	42 1000	51 1075
65				10 550	36 675	46 725
70					29 400	42 450
75						
80						
85						
90						
0	6600	2900	1350	500		
	825	550	425	350	300	250

NOTE: RATINGS ABOVE THE HEAVY LINE ARE BASED ON STRUCTURAL COMPETENCE AND NOT ON MACHINE STABILITY



DEPLOYED JIB LOAD CAPACITIES (LBS) FOR ALL BOOM LENGTHS

JIB CAPACITIES ARE FOR MID SPAN OUTRIGGERS (14 FT 0 IN MIN CENTER TO CENTER)

LOADED BOOM ANGLE	65° *	70°	75°	80°
RETRACTED 26 FT JIB	800	1925	3900	4100
EXTENDED 44 FT JIB	550	1500	2550	2550

* DO NOT OPERATE JIB BELOW THIS ANGLE UNLESS BOOM IS FULLY RETRACTED. SEE NOTE 1

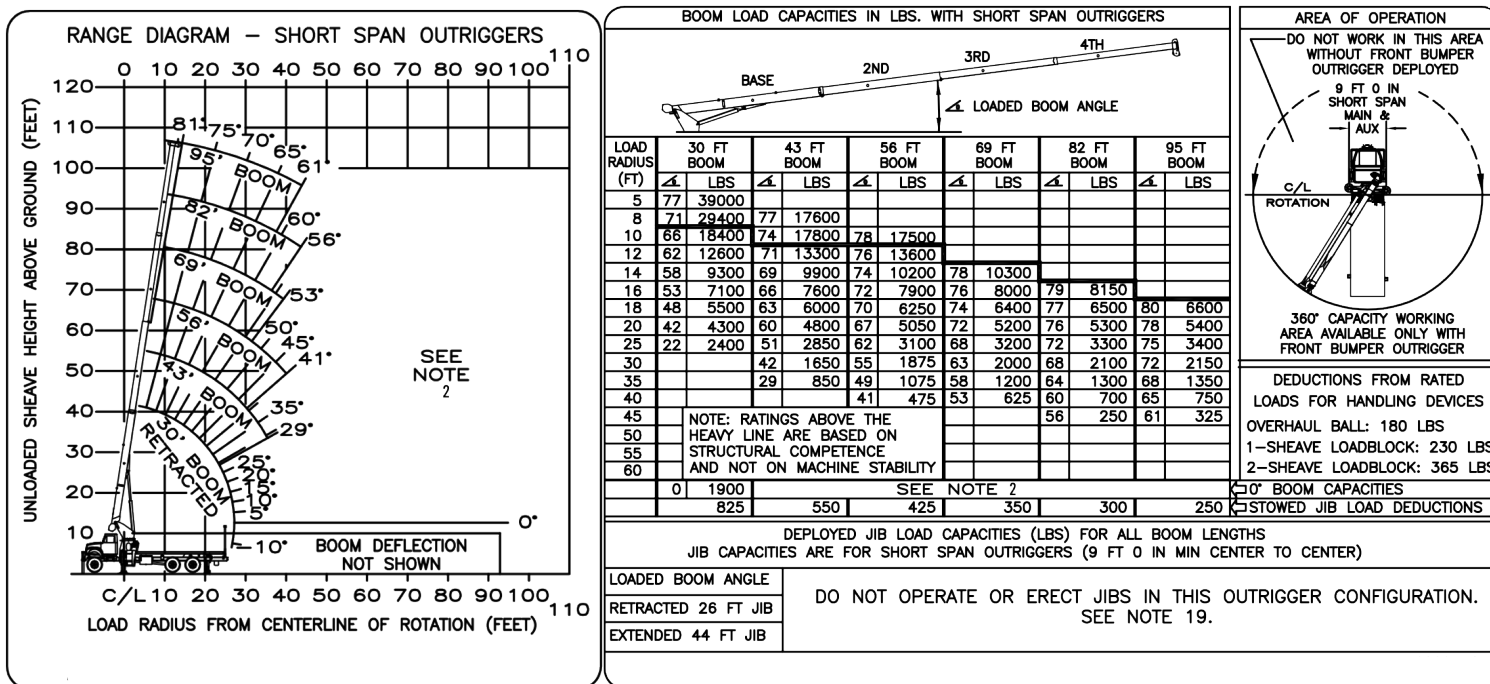
Note 1: When jib is erected, boom must be fully retracted before lowering below minimum boom with jib angles. Retracted boom with jib has no lifting capacity below a 50 degree angle with full span outriggers and below a 65 degree angle not shown on jib load rating chart.

Note 2: Do not lower boom into this area, instability may occur. Hydraulic pressure may not allow raising the boom without retracting boom first.



AC23-95B | LOAD CHARTS

SHORT SPAN OUTRIGGERS

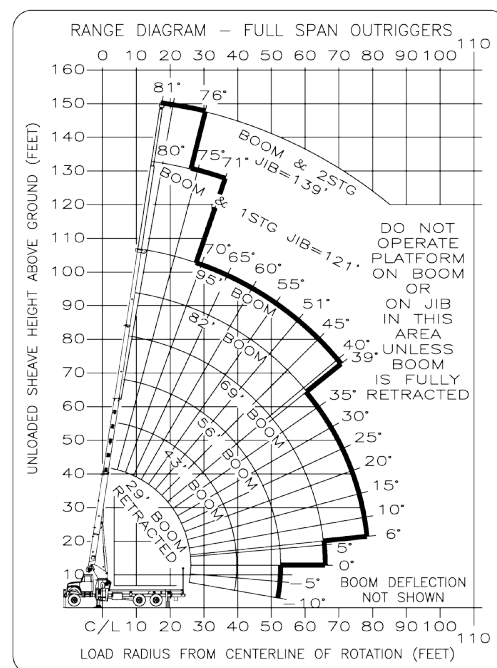


Note 1: When operating the crane in the "Short Span" mode, the outrigger beam pins must be properly engaged. Do not operate or erect jibs in "Short Span" outrigger configurations.
Note 2: Do not lower boom into this area, instability may occur. Hydraulic pressure may not allow raising the boom without retracting boom first.

WINCH CHART

1 PART LOAD LINE	2 PART LOAD LINE	3 PART LOAD LINE	4 PART LOAD LINE	5 PART LOAD LINE	CAUTION OPERATOR AIDS MUST BE IN GOOD OPERATING CONDITION BEFORE OPERATING CRANE. REFER TO OWNERS MANUAL. KEEP AT LEAST 3 WRAPS OF LOADLINE ON DRUM AT ALL TIMES. USE ONLY 9/16" DIAMETER IWRC OR ROTATION RESISTANT WIRE ROPE WITH 37,000 LBS. MIN. BREAKING STRENGTH ON THIS MACHINE.
LOADS UP TO	LOADS UP TO	LOADS UP TO	LOADS UP TO	LOADS UP TO	
10,571 LBS. IWRC XXIP	21,142 LBS. IWRC XXIP	31,713 LBS. IWRC XXIP	42,284 LBS. IWRC XXIP	47,000 LBS. IWRC XXIP	
7,400 LBS. ROT. RESISTANT WIRE ROPE	14,800 LBS. ROT. RESISTANT WIRE ROPE	22,200 LBS. ROT. RESISTANT WIRE ROPE	29,600 LBS. ROT. RESISTANT WIRE ROPE	37,000 LBS. ROT. RESISTANT WIRE ROPE	
95 FT + 44 FT JIB	95 FT BOOM	74 FT BOOM	56 FT BOOM	45 FT BOOM	
MAXIMUM BOOM LENGTH AT MAXIMUM ELEVATION WITH RIGGING SHOWN TO REACH THE GROUND					
SEE OWNERS MANUAL FOR OTHER REEVING OPTIONS					
With certain boom and hoist tackle combinations, maximum capacities may not be obtainable with standard cable lengths.					

PLATFORM CHART



For more complete information on Altec products and services, visit us on the web at www.altec.com. Material and specifications are subject to change without notice. Featured units in photos may include optional features. Please contact an Altec representative for all available options. Charts published herein are intended to be a guide only and should not be construed to warrant application for lifting purposes. Consult supplied operation manual for further details. Altec® and the Altec logo are registered trademarks of Altec Inc. in the United States and various other countries and may not be used without permission.
© 2014 Altec Inc. All Rights Reserved.

Altec
Altec.com/cranes
866.966.2969
sales@altec.com

866-966-2969
sales@altec.com

AIOSAC2395-1015-v1-r1

210 Inverness Center Drive
Birmingham, AL 35242
Fax 205.449.4774
www.altec.com

For more complete information on Altec products and services, visit us on the web at www.altec.com.

© 2015 Altec Inc
All Rights Reserved

Material and specifications are subject to change without notice. Featured units in photos may include optional features. Please contact an Altec representative for all available options. Charts published herein are intended to be a guide only and should not be construed to warrant application for lifting purposes. Consult supplied operation manual for further details.

Altec® and the Altec logo are registered trademarks of Altec Inc in the United States and various other countries and may not be used without permission.

