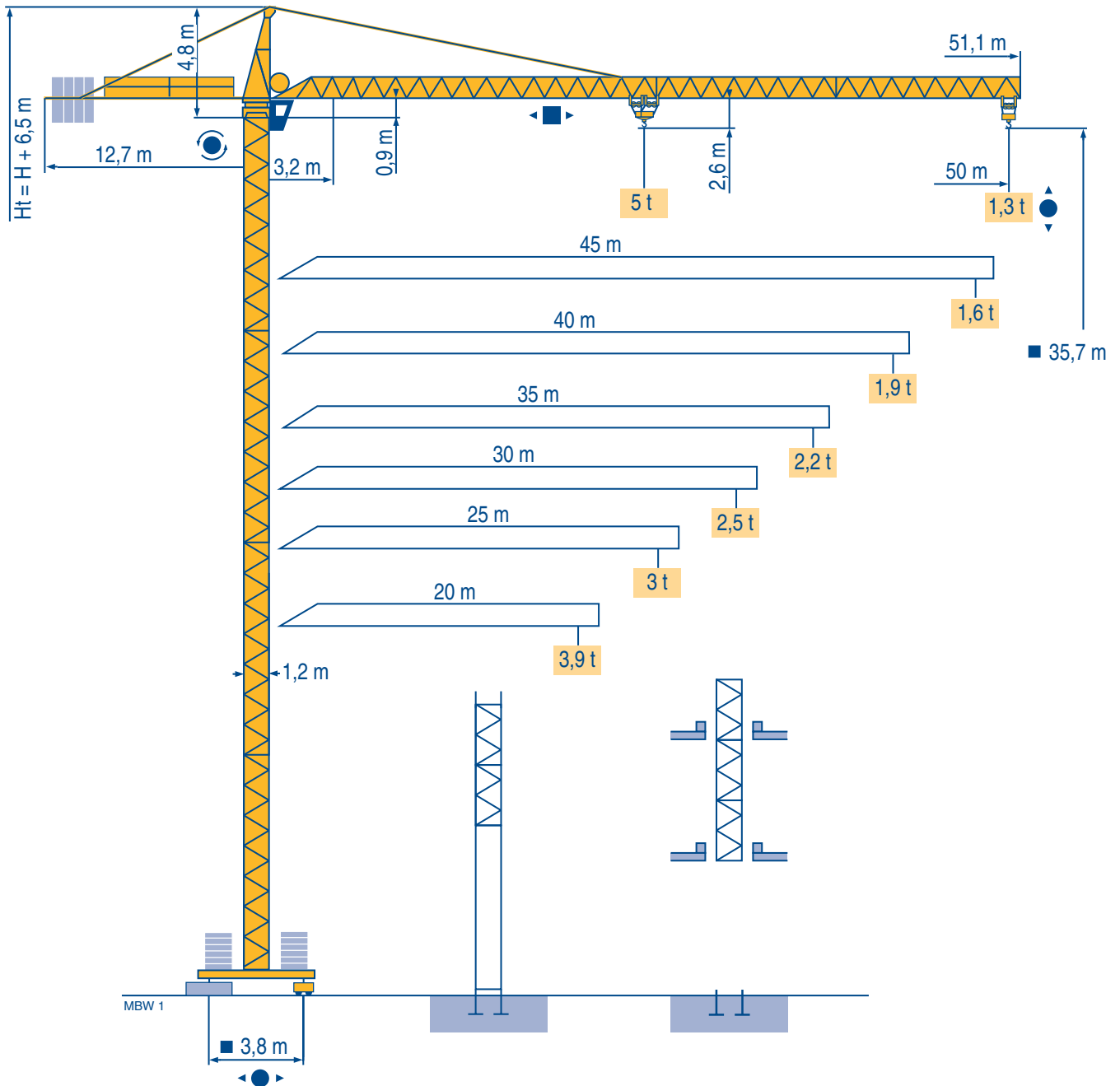


Mci 85 A/B



CITY CRANE

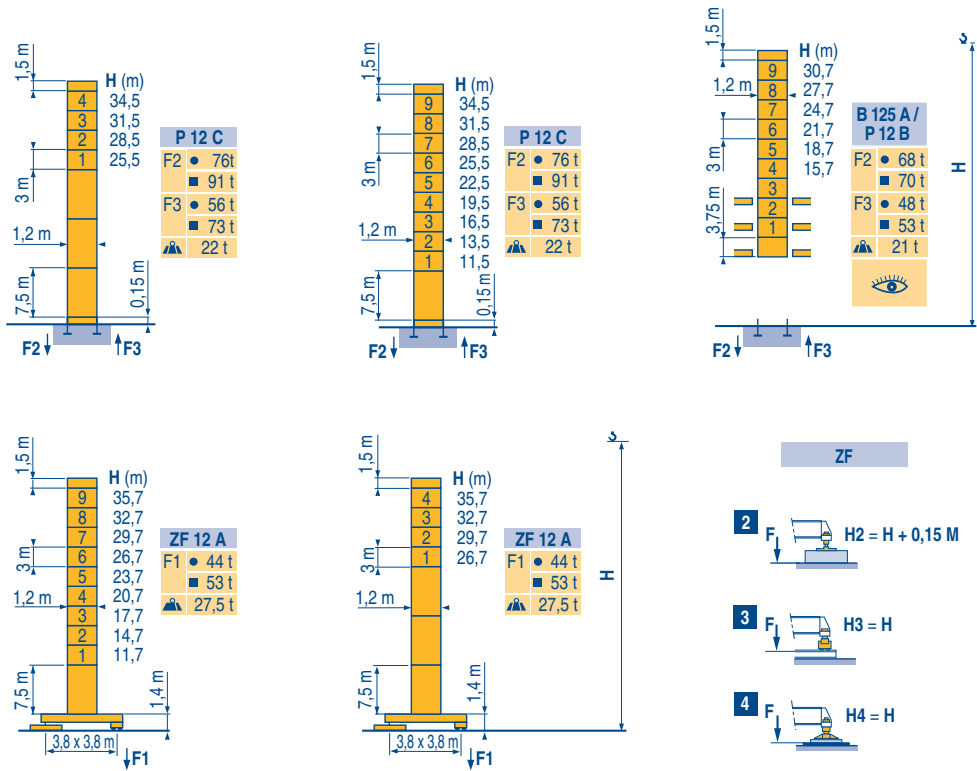
Masts / Reactions

□ 1,2 m



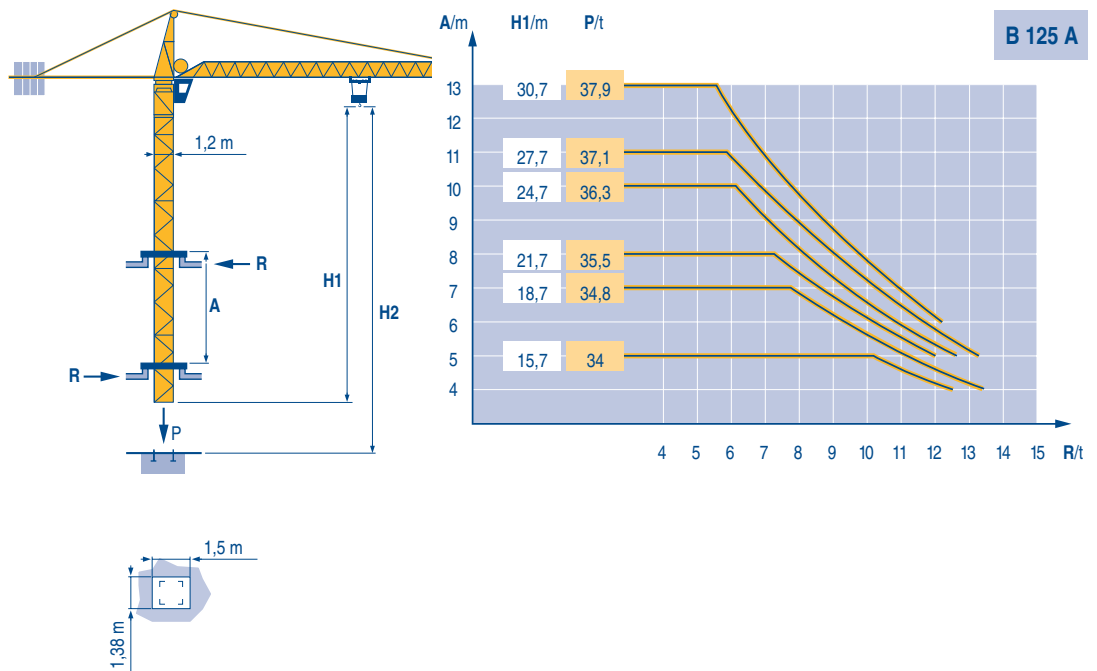
20 m ⇒ 50 m

MBW 1



Climbing crane

MBW 1



CITY CRANE
MCi 85 A/B

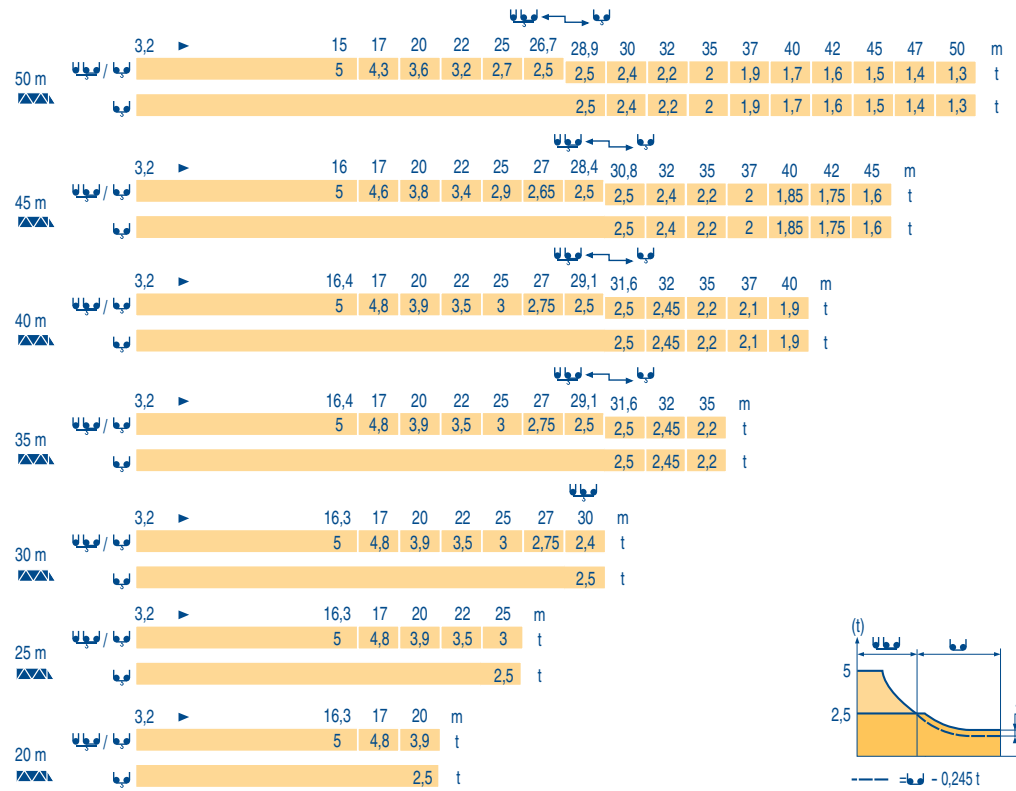


GB

- Reactions in service
- Reactions out of service
- ▲ Without load, ballast (or transport axles), with maximum jib and maximum height.
- 👁 See climbing crane

Load diagrams

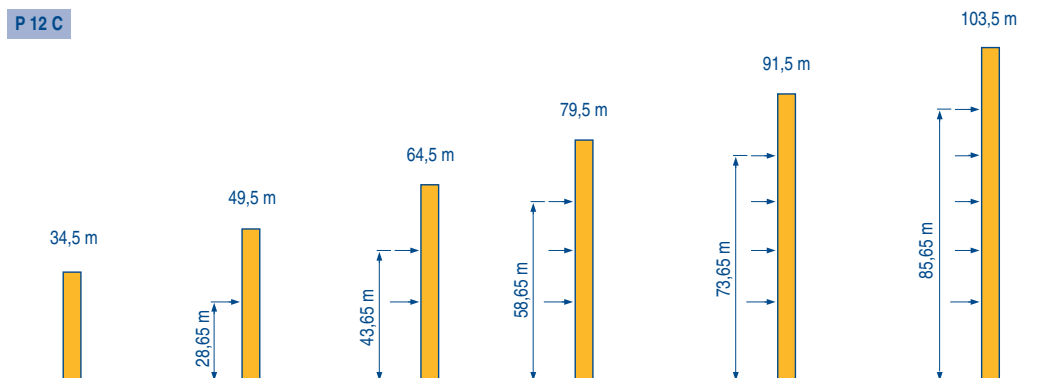
MBW 1



Anchorage

MBW 1

P 12 C



CITY CRANE MCi 85 A/B
















POTAIN

GB

- A Distance between collars
- H1 Crane height
- P Crane weight (in service)
- R Horizontal reaction

Mechanisms

MBW 1

									hp	kW	
											
	25 PC 13	m/min	8,2	33	66	4,1	16,5	33	25	18,4	323 m
		t	2,5	2,5	1,3	5	5	2,6			
	4 D3 V3	m/min	15 - 30 - 58						4	3	
	RCV 60	rpm	0 → 0,8						8	5	
	ZF RT 324	m/min	26						2 x 4	2 x 2,9	
CEI 38 		IEC 38		kVA							
400 V (+6% -10%) 50 Hz		25 PC : 35 kVA				2000/14					

GB

-  Hoisting
-  Trolleying
-  Slewing
-  Travelling

In compliance with the EEC Instructions on noise level



This commercial document is not legally binding.
For any technical information, please refer to the corresponding instructions.

Manitowoc
Crane CARE

Manitowoc
Crane Group



Americas

Tel: +1 920 683 6322
Tel: +1 717 597 8121

Europe - Middle East - Africa

Tel: +(33) 4 72 81 50 00
Tel: +(44) 191 565 6281

Asia - Pacific

Tel: +(65) 6861 7133
Fax: +(65) 6862 4142

www.manitowoccrane.com

Manitowoc Crane Group Asia Pte Ltd
Manitowoc Crane Group
26 Benoi Road
Singapore 629898

Tel: 65-6861 7133
Fax: (Admin/ Sales) : 65-6862 4040
Fax: (Service/ Parts) : 65-6862 4142
www.manitowoccrane.com

CITY CRANE MCI 85 A/B

Ref. 2004 45 MBW 1

Copyright.Reproduction interdite © POTAIN 2004

Réalisation Sedoc