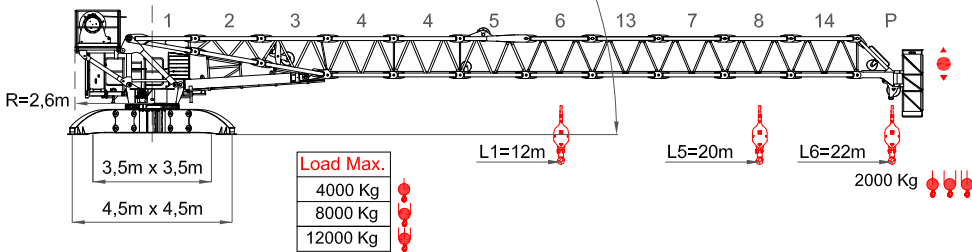
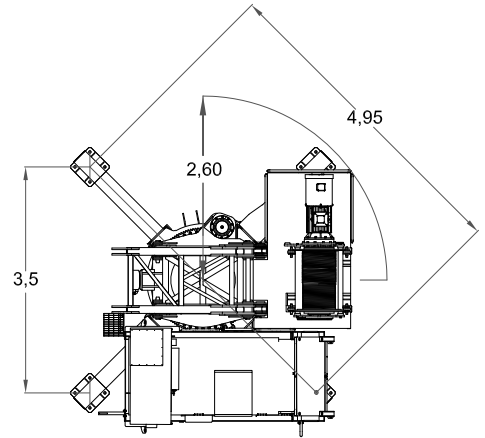
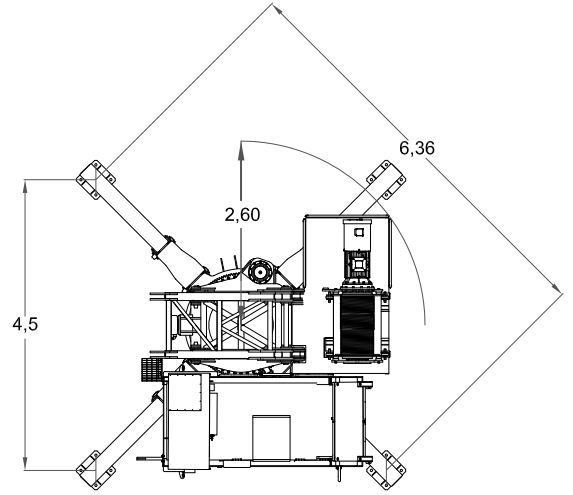


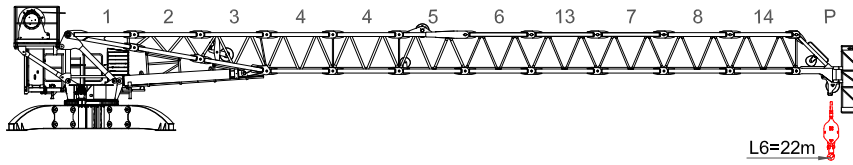
IN SERVICE / OUT OF SERVICE		
Max Angle (°)	84	
Jib (m)	L (m)	H (m)
22	3,21	22,9
20	3,01	20,9
18	2,80	18,9
16	2,59	16,9
14	2,38	14,9
12	2,28	14,9






84° IN SERVICE / OUT OF SERVICE

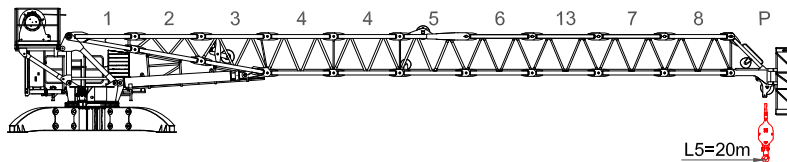
L1	12 m = 1 + 2 + 3 + 4 + 4 + 5 + P
L2	14 m = 1 + 2 + 3 + 4 + 4 + 5 + 6 + P
L3	16 m = 1 + 2 + 3 + 4 + 4 + 5 + 6 + 13 + P
L4	18 m = 1 + 2 + 3 + 4 + 4 + 5 + 6 + 13 + 7 + P
L5	20 m = 1 + 2 + 3 + 4 + 4 + 5 + 6 + 13 + 7 + 8 + P
L6	22 m = 1 + 2 + 3 + 4 + 4 + 5 + 6 + 13 + 7 + 8 + 14 + P

Curvas de cargas - Load diagrams - Lastkurven - Courbes de charges - Curve di carico - График грузоподъёмности






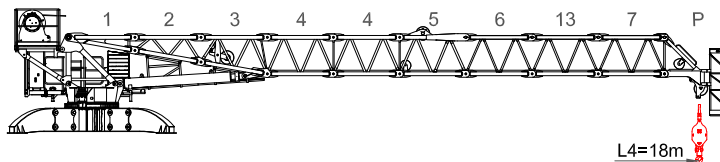
22 m

Max. load	6	7	8	10	12	14	16	18	20	22	m
15,0m	4000	4000	4000	4000	4000	4000	3853	3144	2570	2000	Kg 
9,0m	8000	8000	8000	7564	5939	4755	3853	3144	2570	2000	Kg 
6,0m	12000	11584	9937	7564	5939	4755	3853	3144	2570	2000	Kg 



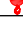


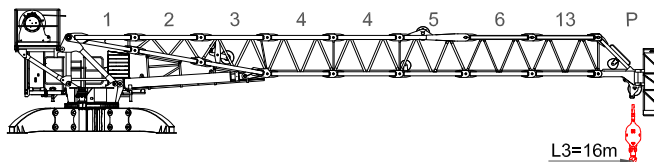
20 m

Max. load	6	7	8	10	12	14	16	18	20	m
15,0m	4000	4000	4000	4000	4000	4000	3900	3190	2500	Kg 
9,0m	8000	8000	8000	7608	5984	4801	3900	3190	2500	Kg 
6,0m	12000	11622	9977	7608	5984	4801	3900	3190	2500	Kg 






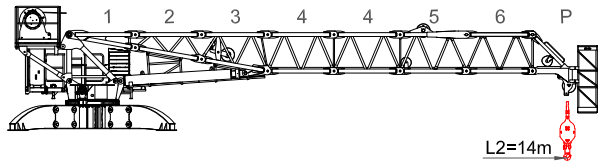
18 m

Max. load	6	7	8	10	12	14	16	18	m
15,0m	4000	4000	4000	4000	4000	4000	3955	3100	Kg 
9,0m	8000	8000	8000	7675	6047	4860	3955	3100	Kg 
6,0m	12000	11699	10049	7675	6047	4860	3955	3100	Kg 






16 m

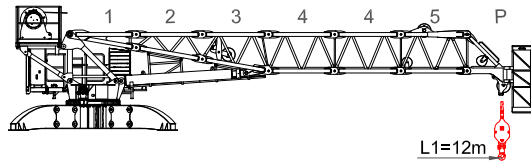
Max. load	6	7	8	10	12	14	16	m
16,0m	4000	4000	4000	4000	4000	4000	4000	Kg 
11,0m	8000	8000	8000	8000	6327	5109	4000	Kg 
7,0m	12000	12000	10426	8000	6327	5109	4000	Kg 



14 m






Max. load	7	8	9	10	12	13	14	m
14,0m	4000	4000	4000	4000	4000	4000	4000	Kg 
11,0m	8000	8000	8000	8000	7063	6357	5500	Kg 
7,0m	12000	11482	10038	8862	7063	6357	5500	Kg 





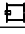










12 m










Max. load	8	9	10	11	12	m
12,0m	4000	4000	4000	4000	4000	Kg 
12,0m	8000	8000	8000	8000	8000	Kg 
8,0m	12000	11724	10398	9296	8000	Kg 


Mecanismos - Mechanisms - Antriebe - Mécanismes - Meccanismi - Приводы

50 Hp (37Kw) INV		 H. 690m Ø16				 H. 345m Ø16				 H. 230m Ø16			
		D-Max 715m 		D-Max 715m 		D-Max 715m 		D-Max 715m 					
	m/min	0—50	0—64	0—91	0—215	0—25	0—32	0—45,5	0—107,5	0—16,5	0—21	0—30	0—71,5
	Kg	4000	3000	2000	600	8000	6000	4000	1200	12000	9000	6000	1800
	Kw	37	37	37	37	37	37	37	37	37	37	37	37

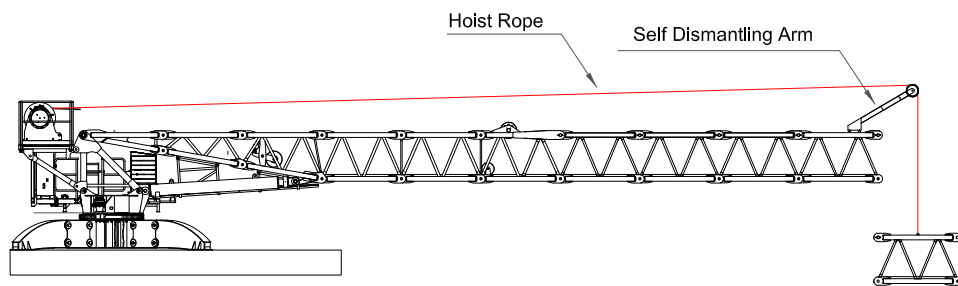
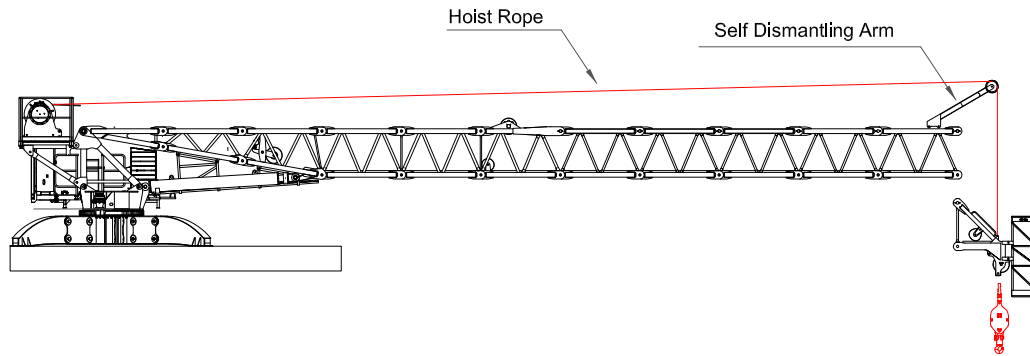
		 - 	
		2 min. de 2° a 84° 2 minutes from 2° to 84°	
	Kw	22	
	r.p.m.	0—0,8	
	Nm	1 x 85	
	m/min	12—24	
	Kw	4 x 3	

- * Opcional / Optional / Opzionale
-  Elevación / Hoisting / Heben / Levage / Sollevamento
-  Elevación de pluma / Luffing / Ausleger-Einziehen / Releage / Brandeggio
-  Orientación / Slewing / Schwenken / Orientation / Rotazione
-  Traslacion / Travelling / Schienenfahren / Translation / Traslazione
-  Cable / Rope / Seil / Câble / Fune

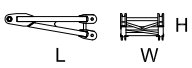



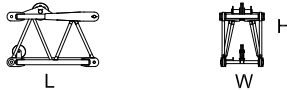
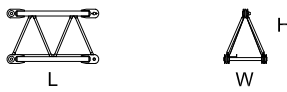


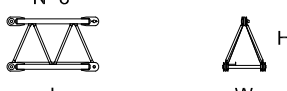



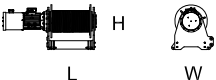
		400 V 50 Hz 60 Hz	100 m 4 x 35 mm ²
2000/14/CEE 2005/88/CEE	2006/95 /CEE		

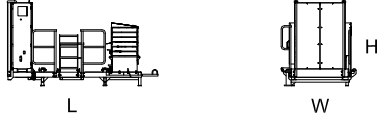
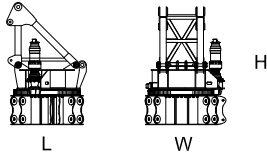
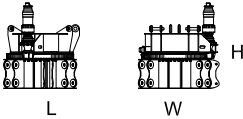
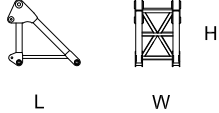

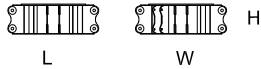

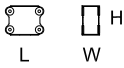

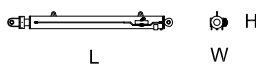
 37 Kw	74 Kw	145 kVA
---	-------	---------

Pluma Autodesmontable – Self Dismantling Jib - Selbstabbauausleger - Flèche Autodémontable –
Braccio Autosmontabile - саморазборная стрела



Dimensiones y transporte - dimensions and transport - Abmessungen und Transport - dimensions et des transporte - dimensioni e trasporti - Размеры и транспорта

	L(m)	W(m)	H(m)	Peso(Kg)				
Pluma tramo primero / Jib heel section / Ausleger-Anlenkstück / Pied de fleche / Settore articolato di braccio								
N° 1				1	2,22	1,04	0,61	540
	L	W	H	2	2,22	1,02	0,96	502
N° 2				3	2,22	1,02	1,37	1095
	L	W	H					
N° 3								
	L	W	H					
Elemento intermedio de pluma / Intermediate jib section / Ausleger-Zwischenstück / Elément interm. de fleche / Spezzone di braccio								
N° 4				X2	2,22	1,02	1,32	530
	L	W	H					
N° 5					2,22	1,08	1,53	795
	L	W	H					
N° 6					2,22	1,02	1,32	380
	L	W	H					
N° 13					2,22	1,02	1,32	340
	L	W	H					
N° 7					2,22	1,02	1,32	336
	L	W	H					
N° 8					2,22	1,02	1,32	283
	L	W	H					
N° 14					2,22	1,02	1,32	278
	L	W	H					
Elemento final de pluma / Intermediate jib section / Ausleger-Zwischenstück / Elément interm. de fleche / Spezzone di braccio								
	L	W	H		1,44	0,95	1,95	335
Contrapluma / Counter-jib / Gegenausleger / Contre-fleche / Controbraccio								
	L	W	H		1,76	2,46	0,45	450
Equipo de elevacion / Hoist winch / Heben / Levage / Sollevamento / подъёмник								
	L	W	H		2,5	1,02	1,08	1600

	L(m)	W(m)	H(m)	Peso(Kg)
Plataforma / Platform / Wartungs /Support /Supporto				
	3,64	1,77	2,05	2000
Unidad de rotacion / Complete slewing unit / Drehbühne / Orientation / Rotazione				
	2,21	2,21	3,48	3860
	2,21	2,21	2,07	2990
	1,76	1,12	1,60	870
	1,73	1,77	1,34	1900
	2,21	2,21	0,73	1090
Patas de Apoyo / Base Support / Basisträger / support de base / Supporto di base				
	1,84	0,45	0,76	340
Extension patas de Apoyo / Base Support extension / Grundplattenverlängerung / extension du support de base / Prolunga del supporto di base				
	0,94	0,43	0,70	245
Gancho / Hook / Lasthaken / Crochet / Gancio				
	0,45	0,15	1,3	180
Cilindro / Cylinder / Zylinder / Cylindre / Cilindro				
	3,96	0,41	0,44	1700

