

ALL TERRAIN CRANE ZAT2000



ZOOMLION

Zoomlion Heavy Industry Science & Technology Co.,Ltd.

Add: No.677, Lugu Road, Zoomlion Industrial Park, Changsha, Hunan, China, 410205
Copyright©2017 Zoomlion. All rights reserved. Reproduction and copying of any part of contents is not allowed for any purposes without Zoomlion's approval.
Production Date:20180615



websites.en.zoomlion.com

ZOOMLION

Vision Creates Future

CONTENTS

ZAT2000	Highlights	01 / 02
ZAT2000	Main Technical Parameters	03
ZAT2000	Overall Dimensions in Driving Condition / Lifting Height Chart	04
ZAT2000	Lifting Capacity Tables	07 / 08





103
m

Max. Lifting Height
(Main boom + Jib)

72
T

Counterweight
Total weight



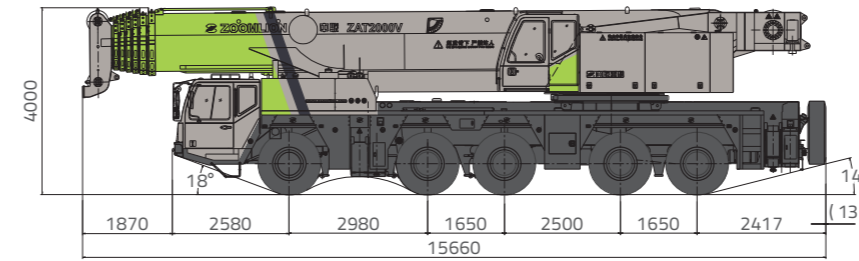
ZAT2000

Highlights

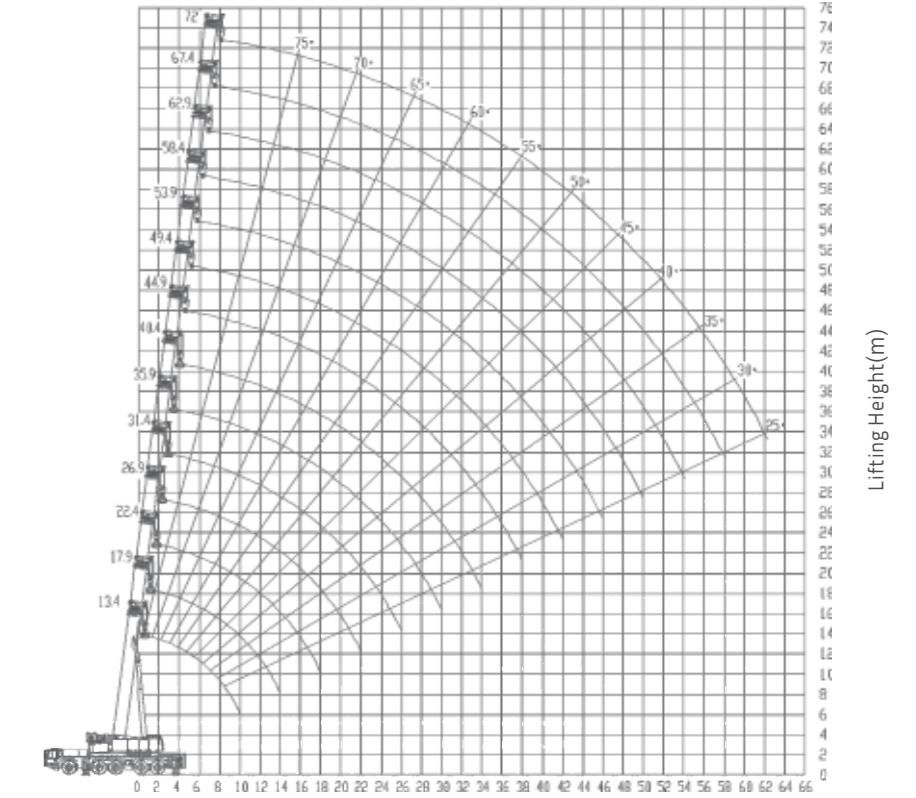
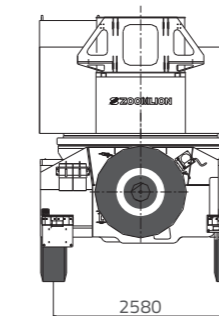
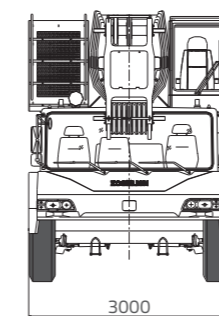
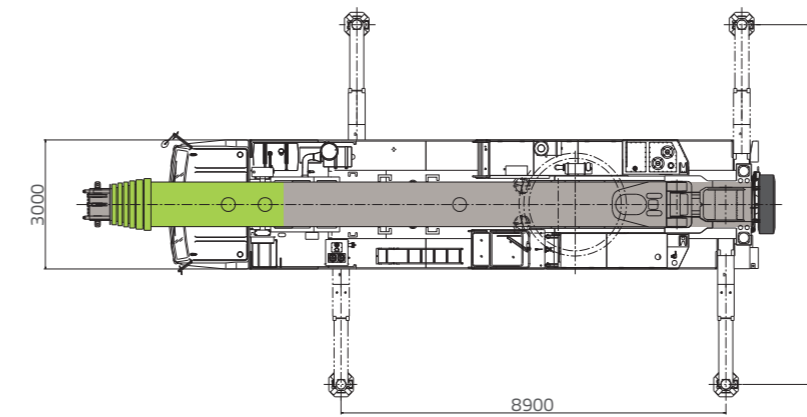
- 7 section 72m main boom, total 36m jibs (including optional 8m extension), max. lifting height can reach up to 103m.
- Elliptic shaped main boom with 1100Mpa high tensile imported plate, offers outstanding stability and strength.
- Advanced multi-steering modes and market-proven pneumatic-hydraulic suspension system enables suitable and stable driving.
- Golden driving chain with WHEICHAJ engine, FAST transmission and ZOOMLION axle, makes it max. cost efficient.



Item		Value	Remarks	
Work performance	Max. rated lifting capacity	kg	200000	
	Max. load moment of basic boom	kN.m	6664	
	Max. lifting height of main boom	m	72	
	Max. lifting height of jib	m	95/(103)	
The parameters do not include deflection of main boom and jib. The value in the brackets is the value with extensions installed.				
Work speeds	Max. hoist rope speed (Main winch)	m/min	120	
	Max. hoist rope speed (Auxiliary winch)	m/min	70	
	Boom extending time	min	12	
	Boom derricking up time	s	97	
	Slewing speed	r/min	0-1.4	
Driving	Max. height above sea level	m	2000	
	Max. driving speed	km/h	75	
	Max. gradeability	%	40	
	Min. turning diameter	m	20	
	Min. ground clearance	mm	305	
	Fuel consumption per hundred kilometers	L	78	
Mass	Deadweight in driving condition	kg	60000	
Remove the hook, the movable counterweight, the jib, the rooster sheave, the tip boom, the outrigger pads, sliding beams, main and auxiliary winches, wire ropes reeving on winches and the spare tire, and drain off hydraulic oil of superstructure before vehicle driving.				
Dimensions	Overall dimensions	mm	15660 × 3000 × 4000	
	Outrigger spread (L)	m	8.9	
	Outrigger spread (W)	m	8.3	
	Main boom length	m	13.4-72	
	Boom angle	°	-0.5-83	
	Jib length	m	12, 20, 28	
	Jib + extension length	m	36	
	Offset	°	0, 15, 30	
Chassis	Model	ZLJ5603JQZV4		
	Type	II		
	Engine	Model	WP13.530E40	
		Max. rated power	kW/r/min	390
		Max. net power	kW/r/min	385
Max. output torque	N.m/r/min	2220		

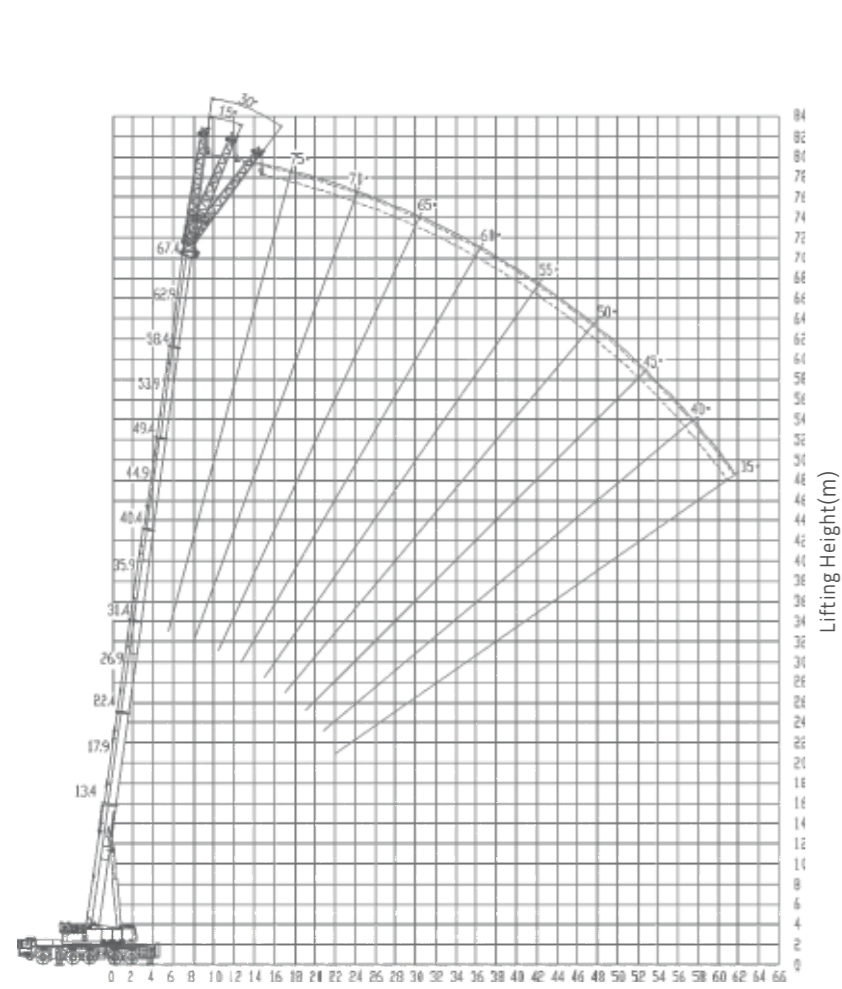


Overall view (Unit: Metric mm)



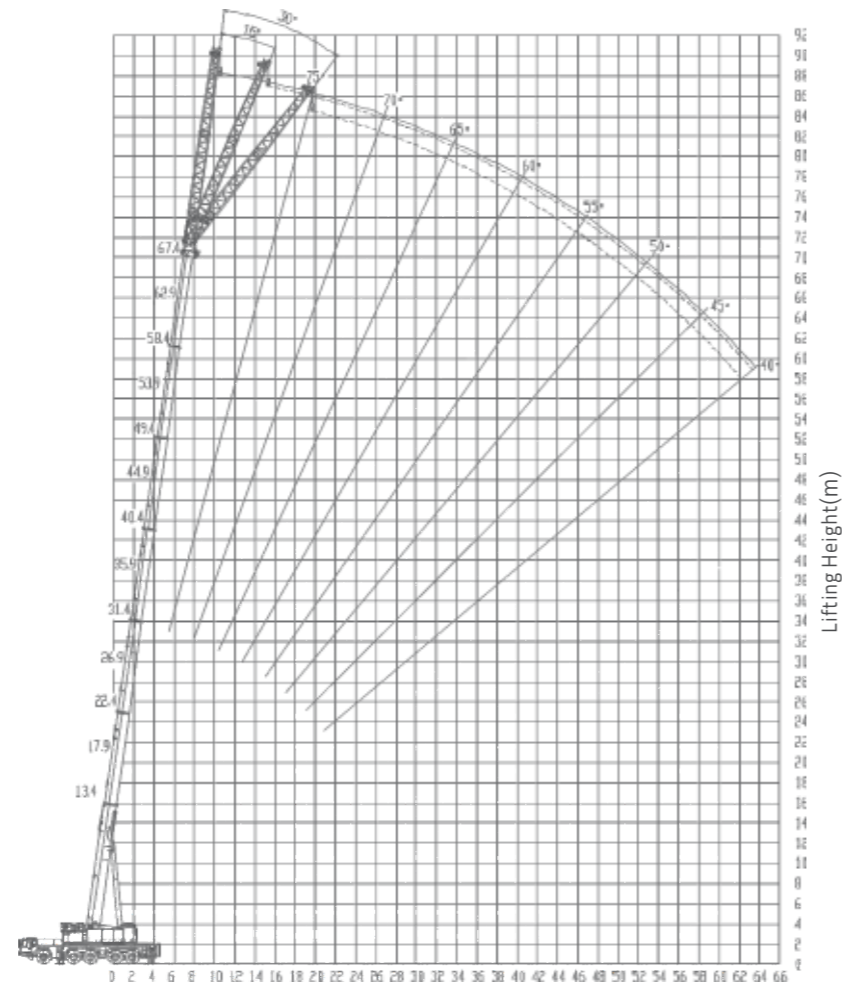
Working radius(m)

72 m main boom



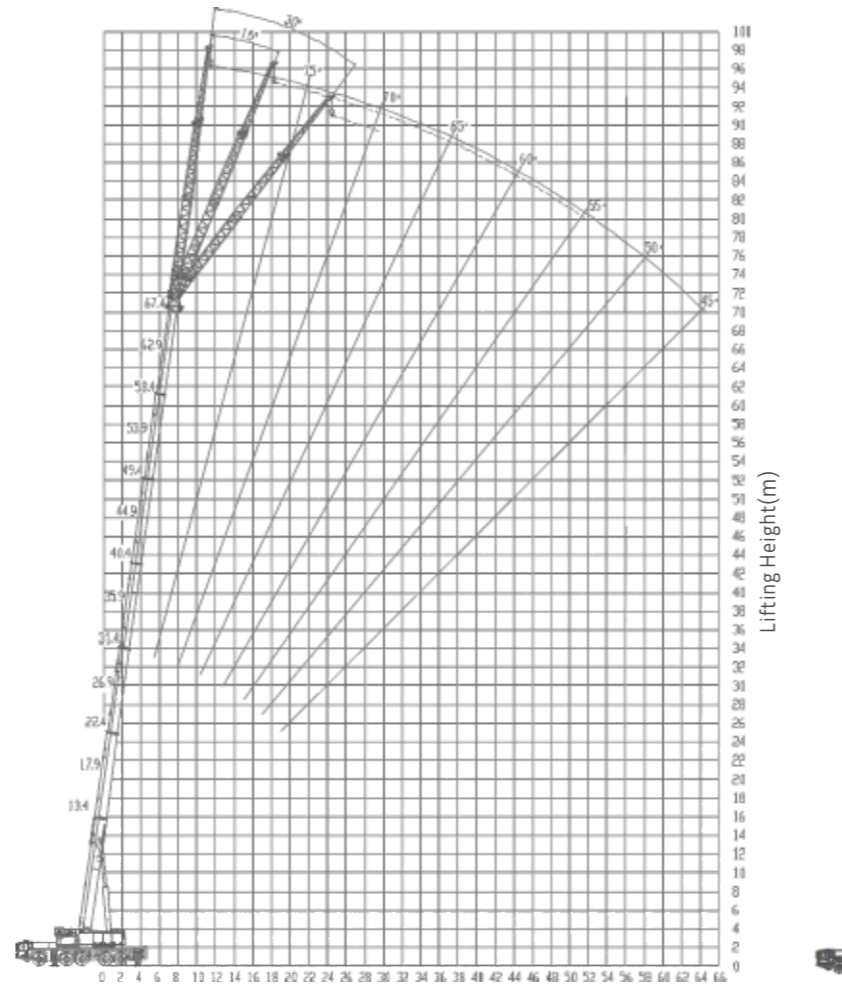
Working radius(m)

67.4 m main boom + 12 m jib (jib section 1)



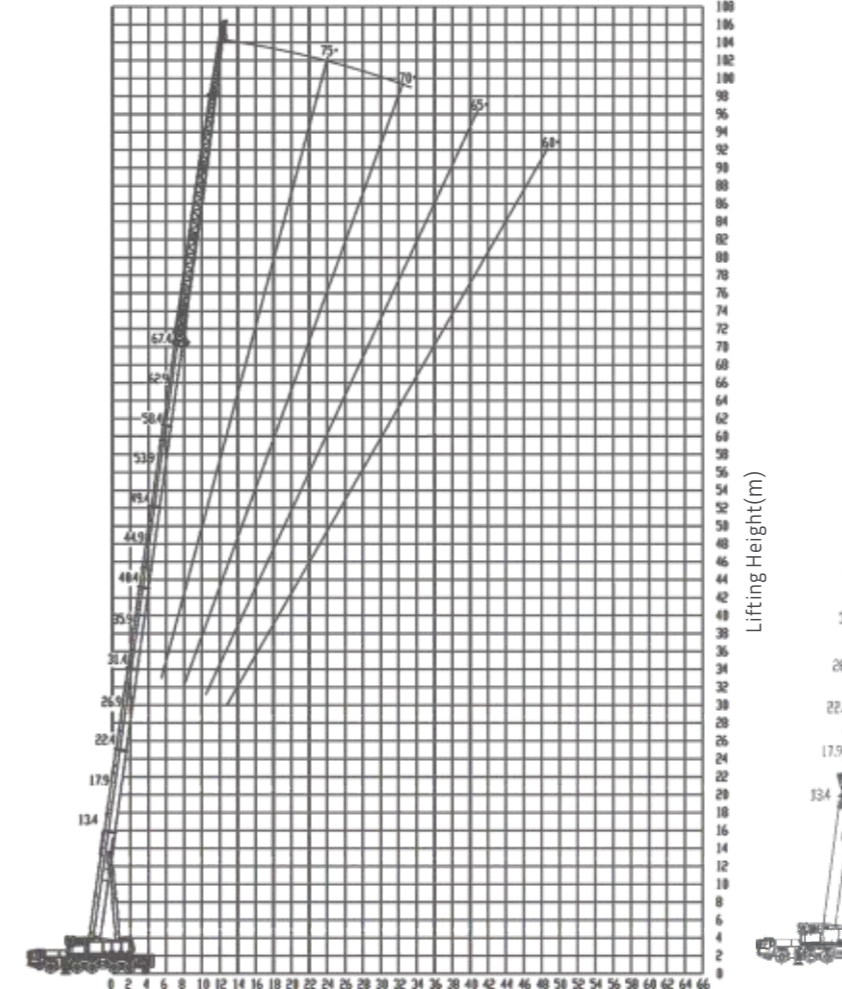
Working radius(m)

67.4 m main boom + 20 m jib (extension 2 + jib section 1)



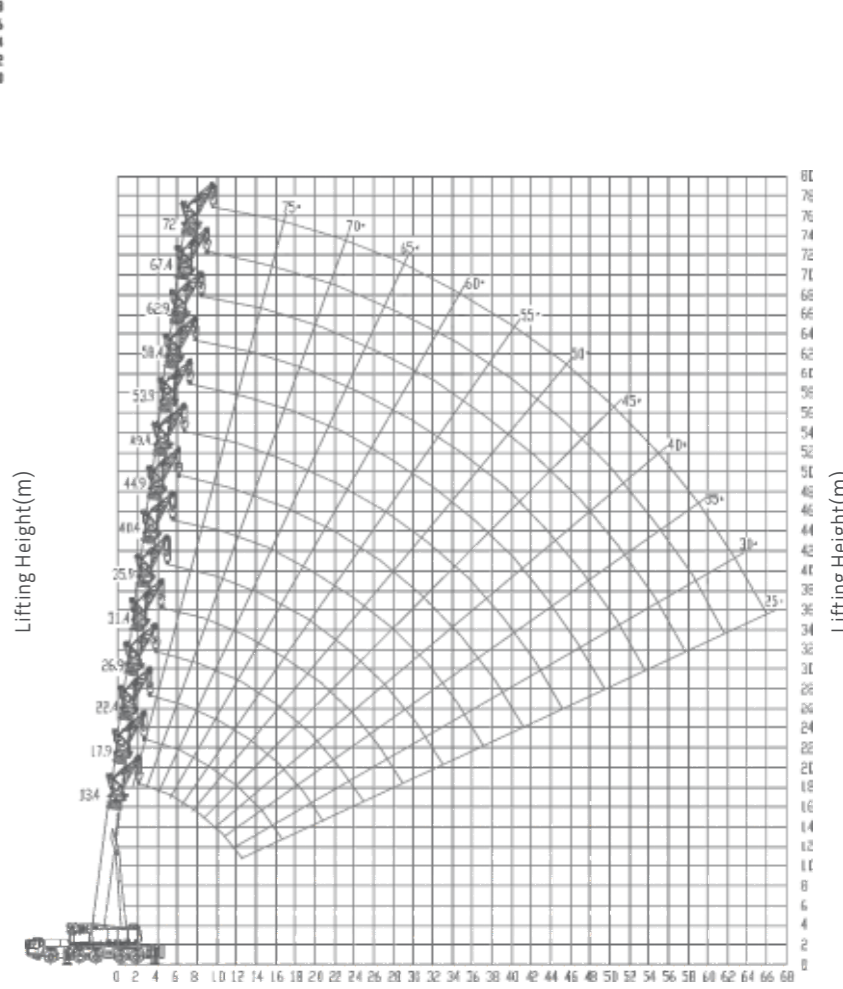
Working radius(m)

67.4 m main boom + 28 m jib (extension 2 + jib section 1 + jib section 2)



Working radius(m)

67.4 m main boom + 36 m jib (extension 1 + extension 2 + jib section 1 + jib section 2)



Working radius(m)

main boom + 4.3 m tip boom

ZAT2000 Lifting Capacity Tables

Table 1 Main boom Unit:×1000kg

Outriggers fully extended, with 72 tons counterweight, over full range																	
Radius(m)	13.4	17.9	22.4	26.9	31.4	35.9	40.4	44.9	49.4	53.9	58.4	62.9	67.4	72			
3.0	200*	135*	125														
3.5	145*	135*	125	110													
4.0	135*	130	125	110													
4.5	128	122	117	108	90												
5.0	120	115	109	105	88												
6.0	108	105	97	95	86	72											
7.0	95	93	87	86	82	70	54										
8.0	85	83	79	78	77	68	52	44									
9.0	75	75	73	72	71	64	50	41	34								
10.0	64	67	67	67	64.5	59	47.5	38	33	26							
11.0		60	60	60	59	56	45	36	32	25	20						
12.0		54	54	54	53.5	53	43.5	34	30	24	19.5	16					
14.0		45	45.5	45	45.5	46	40	30	27	22.5	18.5	15.5	13	11			
16.0			39	39	39.5	40	36.5	26.5	24	21	17.5	15	12.5	10.5			
18.0			33.5	33	34	35	33	24	22	19	16.5	14.2	12	10			
20.0				28	29	30	30	22	20	17.5	15.5	13.5	11.5	9.5			
22.0				24	25	25.5	26.5	20	18	16	14.5	12.5	11	9			
24.0					21.5	22.5	23.4	18	16.5	15	13.5	12	10.3	8.4			
26.0				19	19.5	20.4	16.5	15	13.7	12.5	11	9.7	7.9				
28.0					17.5	18.2	15	13.5	12.5	11.5	10.5	9.2	7.4				
30.0					15.5	16.2	14	12.5	11.5	10.7	10	8.7	6.7				
32.0						14.6	13	11.5	10.5	10	9.5	8.2	6.3				
34.0						13.2	12.3	10.7	9.8	9.3	8.9	7.7	5.9				
36.0							11	10	9.2	8.6	8.5	7.1	5.5				
38.0							10	9.3	8.6	8	8	6.7	5				
40.0								8.6	8	7.5	7.4	6.3	4.6				
42.0								8	7.3	6.8	6.8	6	4.3				
44.0										6.8	6.3	6.3	5.7	4			
46.0											6.3	5.8	5.4	3.8			
48.0												5.4	5.1	3.5			
50.0													5	4.8	3.2		
52.0														4.5	3		
54.0														4.2	4.4	2.8	
56.0															4	4.1	2.6
58.0																3.9	2.4
60.0																3.6	2.3
62.0																3.3	2.1
64.0																	2
Reeving Hook	14	14	12	10	8	7	5	4	3	3	2	2	2	2			
Telescoping mode	I	1	1	1	2	2	2	2	3	3	3	3	3	3	4		
	II	1	2	2	2	2	2	2	2	3	3	3	3	3	4		
	III	1	1	2	2	2	2	2	2	2	3	3	3	3	4		
	IV	1	1	1	1	2	2	2	2	2	2	3	3	3	4		
	V	1	1	1	1	1	2	2	2	2	2	2	3	3	4		
	VI	1	1	1	1	1	1	2	2	2	2	2	2	3	4		

Note:
The values with * are suitable for 220 tons hook. When the lifting capacity is 200 tons, 18 reevings are recommended.
When the lifting capacity is 145 tons, 15 reevings are recommended.

Table 2 Main boom Unit:×1000kg

Outriggers intermediately extended, with 72 tons counterweight, over full range																					
Radius(m)	13.4	17.9	22.4	26.9	31.4	35.9	40.4	44.9	49.4	53.9	58.4	62.9	67.4	72							
3.0	200*	135*	125																		
3.5	145*	135*	125	110																	
4.0	135*	130	125	110																	
4.5	128	122	117	108	90																
5.0	120	115	109	105	88																
6.0	108	105	97	95	86	72															
7.0	87	87	87	86	82	70	54														
8.0	77	77	77	78	77	68	52	44													
9.0	67	67	67	67	68	64	50	41	34												
10.0	57	57	57	57	57	47.5	38	33	26												
11.0		48	49.5	48	49	50	45	36	32	25	20										
12.0		42	43.5	42.5	43	44	43.5	34	30	24	19.5	16									
14.0			34	33	34	35	36	30	27	22.5	18.5	15.5	13	11							
16.0				28	27	28	28.5	29	28	24	21	17.5	15	12.5	10.5						
18.0					22.5	22	23	24	25	24	22	19	16.5	14.2	12	10					
20.0						18	19	20	20.5	20	20	17.5	15.5	13.5	11.5	9.5					
22.0						15	16	17	17.5	17	17	16	14.5	12.5	11	9					
24.0							14	14.5	15	15	15	15	13.5	12	10.3	8.4					
26.0							12	12.5	13	13	13	13	12.5	11	9.7	7.9					
28.0								11	11.5	11	11	11	11.5	10.5	9.2	7.4					
30.0									10	10	10	10	10.2	10	8.7	6.7					
32.0										9	8.7	8.7	8.9	9.2	9.5	8.2	6.3				
34.0										8	7.7	7.7	7.8	8.1	8.5	7.7	5.9				
36.0											6.8	6.7	6.8	7.2	7.5	7.1	5.5				
38.0											6	5.9	6	6.3	6.7	6.7	5				
40.0												5.2	5.2	5.5	6	6.3	4.6				
42.0												4.5	4.5	4.8	5.2	5.6	4.3				
44.0													4	4.3	4.6	5	4				
46.0														3.4	3.7	4	4.5	3.8			
48.0															3.1	3.5	4	3.5			
50.0																2.5	3	3.5	3.2		
52.0																	2.6	3	3		
54.0																		2.1	2.6	2.6	
56.0																			1.8	2.2	2.2
58.0																				1.8	1.8
60.0																				1.5	1.5
62.0																					1.2
64.0																					2
Reeving Hook	14	14	12	10	8	7	5	4	3	3	2	2	2	2							2
Telescoping mode	I	1	1	1	2	2	2	2	3	3	3	3	3	3	4						
	II	1	2	2	2	2	2	2	2	3	3	3	3	3	4						
	III	1	1	2	2	2	2	2	2	2	3	3	3	3	4						
	IV	1	1	1	1	2	2	2	2	2	2	3	3	3	4						
	V	1	1	1	1	1	2	2	2	2	2	2	3	3	4						
	VI	1	1	1	1	1	1	2	2	2	2	2	2	3	4						

Note:
The values with * are suitable for 220 tons hook. When the lifting capacity is 200 tons, 18 reevings are recommended.
When the lifting capacity is 145 tons, 15 reevings are recommended.

ZAT2000 Lifting Capacity Tables

Table 3 Main boom + jib Unit:×1000kg

Outriggers fully extended, with 72 tons counterweight, over sides and rear																								
Jib length	12.0m						20.0m						28.0m				36.0m							
	62.9m			67.4m			62.9m			67.4m			62.9m		67.4m		62.9m	67.4m						
Boom length	Offset (°)		0		15		30		0		15		30		0		15		30		0		0	
82	9	7.5	6.3	7.8	6.2	5.0	6	4.1	3.2	4.8	3.5	2.5	4.2	2.8	2.1	3.3	2.3	1.4	2.2	1.8				
80	8.5	7.3	6.1	7.6	6.2	4.8	5.8	4.1	3.2	4.8	3.5	2.5	4.1	2.7	2	3.3	2.3	1.4	2.1	1.7				
78	8.2	7	5.9	7.4	6.0	4.6	5.6	4.1	3.1	4.7	3.5	2.4	3.9	2.6	2	3.2	2.1	1.4	2	1.6				
76	7.9	6.6	5.6	7.3	6.0	4.5	5.2	3.9	3.1	4.6	3.4	2.4	3.6	2.4	1.9	3	2.1	1.3	1.9	1.6				
74	7.6	6.2	5.4	7	5.8	4.5	4.8	3.7	3.0	4.3	3.4	2.3	3.3	2.3	1.9	2.8	1.9	1.2	1.8	1.5				
72	7.3	5.9	5.1	6.5	5.5	4.5	4.5	3.4	2.9	4.0	3.2	2.3	3	2.2	1.8	2.6	1.9	1.1	1.6	1.4				
70	6.9	5.6	4.9	6	5.2	4.2	4.2	3.2	2.8	3.7	3.0	2.2	2.8	2.1	1.7	2.4	1.8	1.1	1.4	1.1				
68	6.6	5.4	4.8	5.6	4.9	4.2	4.2	3.9	3	2.7	3.5	2.8	2.0	2.5	2.0	1.6	2.2	1.7	1.1	1.3	1.0			
66	6.2	5.1	4.6	5.1	4.8	4.0	3.7	2.9	2.6	3.2	2.7	2.0	2.3	1.9	1.6	2	1.6			1.2				
64	5.8	4.9	4.5	4.8	4.6	4.0	3.5	2.8	2.5	3.0	2.6	2.0	2.2	1.8	1.5	1.8	1.5			1.1				
62	5.5	4.7																						