



FOR NEW EQUIPMENT SALES, CALL
866.966.2969
TO SPEAK WITH AN ALTEC REPRESENTATIVE
or visit us online at altec.com

 **Altec**
DUAL-RATED SOLUTION

STANDARD FEATURES

- Altec LMAP (Load Moment & Area Protection) System
 - » Rated Capacity Limiter
 - » Displays: Boom Length, Boom Angle, Load on Hook, Percent of Rated Capacity
 - » Operator Defined Audible Alarm Set-Points for Boom Angle, Length and Rotational Position
- Dual Entry 20° Tilt Cab with Heater and A/C
- Outrigger Boom Interlock System
- Outrigger Motion Alarm
- Winch Drum Rotation Indicator
- Anti-Two Block Device
- Rotation Resistant Wire Rope
- Winch Control at Load Hook Stow Point
- Hydraulic Oil Cooling System

OPTIONS

- ANSI A92.2 Compliant Aerial Operation Package
 - » Quick Attach 2-Man Platform, 1,200 lb (544.3 kg) capacity
 - » Radio Remote Controls
 - » Fall Protection
- 2-Piece 49 ft (14.9 m) Jib, 28 ft (8.5 m) Retracted
- Composite Reach Extension, 6 ft (1.8 m) Fixed

Recommended safety equipment, available through Altec Supply, include wheel chocks and outrigger pads.

GENERAL SPECIFICATIONS

| | |
|------------------------------------|---------------------------|
| Boom Length (6-Section) | 152 ft (46.3 m) |
| Stowed Travel Height | 13.16 ft (4.01 m) |
| Vehicle Travel Length | 40 ft (12.19 m) |
| 2 Position Out-and-Down Outriggers | |
| Full Span | 24 ft (7.3 m) |
| Mid Span | 17.9 ft (5.4 m) |
| Control System | Pilot-Operated, Hydraulic |

CRANE SPECIFICATIONS

| | |
|---|-------------------------|
| Maximum Lift Capacity | 80,000 lb (36,287.4 kg) |
| Powered Sheave Height | 161 ft (49.1 m) |
| Maximum Sheave Height with Telescopic Jib | 207 ft (63.1 m) |
| Two Speed Winch Capacity | 15,000 lb (6,803 kg) |

ASME B30.5 Compliant

AERIAL SPECIFICATIONS

| | |
|---|---------------------|
| Platform Capacity | 1,200 lb (544.3 kg) |
| Platform Working Height | 167.4 ft (51 m) |
| with Telescopic Jib | 215.1 ft (65.6 m) |
| with Telescopic Jib and Composite Reach Extension | 222 ft (67.7 m) |

ANSI A92.2 Compliant

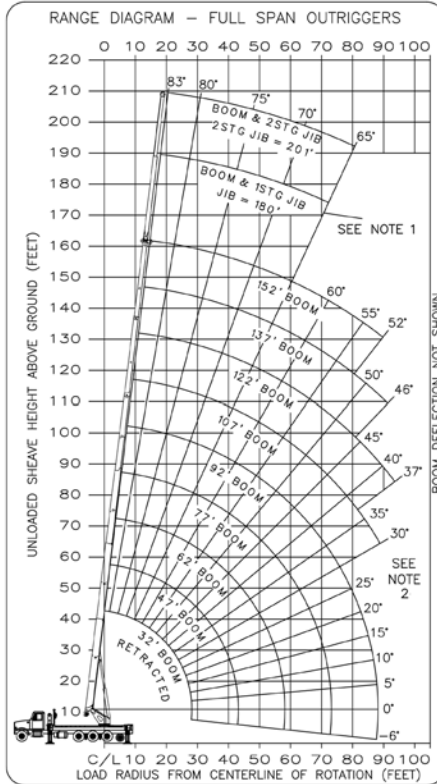
| UNIT | | RECOMMENDED CHASSIS DIM | | | | | MINIMUM RECOMMENDED CHASSIS SPECIFICATIONS | | | | |
|-----------|-------------------|-------------------------|---------|---------|---------|-------------------------|--|-----------------------|-----------|--------------------------------------|-------------------|
| Model | Rear Axle | CA (in) | WB (in) | AF (in) | AS (in) | Rear Axle to Tag Spread | Front Axle Rating (lb) | Rear Axle Rating (lb) | GVWR (lb) | Frame Sec Modulus (in ³) | Frame RBM (in-lb) |
| AC40-152S | Tri with tag axle | 186 | 273 | 165 | 110 | 50 | 20,000 | 66,000 | 86,000 | consult factory | |



LOAD MOMENT AND AREA PROTECTION

The convenient LMAP menu navigation with an intuitive user interface displays load on hook, rated capacity percentage, boom length and angle, load radius, and operator-defined protection with audible alarms. While this feature is unique to Altec, the system's hardware consists of common "off-the-shelf" components that were critically selected for their performance and serviceability.

LOAD CHART - FULL SPAN OUTRIGGERS



BOOM LOAD CAPACITIES IN LBS. WITH FULL SPAN OUTRIGGERS (24 FT)

| LOAD RADIUS (FT) | 32 FT BOOM | | 47 FT BOOM | | 62 FT BOOM | | 77 FT BOOM | | 92 FT BOOM | | 107 FT BOOM | | 122 FT BOOM | | 137 FT BOOM | | 152 FT BOOM | | |
|------------------|------------|-------|------------|-------|------------|-------|------------|-------|------------|-------|-------------|-------|-------------|-------|-------------|-------|-------------|------|--|
| | ◁ | ▷ | ◁ | ▷ | ◁ | ▷ | ◁ | ▷ | ◁ | ▷ | ◁ | ▷ | ◁ | ▷ | ◁ | ▷ | ◁ | ▷ | |
| 7 | 72 | 80000 | 78 | 21100 | 81 | 21000 | | | | | | | | | | | | | |
| 8 | 70 | 75000 | 76 | 21100 | 80 | 21000 | | | | | | | | | | | | | |
| 10 | 66 | 66500 | 74 | 21100 | 78 | 21000 | 80 | 20900 | | | | | | | | | | | |
| 12 | 62 | 58550 | 71 | 21100 | 76 | 21000 | 79 | 20900 | 81 | 20800 | | | | | | | | | |
| 15 | 56 | 47700 | 67 | 21100 | 73 | 21000 | 77 | 20900 | 79 | 20800 | 82 | 17200 | | | | | | | |
| 20 | 43 | 29350 | 60 | 21100 | 68 | 21000 | 73 | 20900 | 76 | 20800 | 79 | 17200 | 81 | 14100 | 82 | 10000 | | | |
| 25 | 27 | 18050 | 53 | 21100 | 63 | 21000 | 69 | 20900 | 73 | 20400 | 76 | 15700 | 78 | 14100 | 80 | 10000 | 81 | 8000 | |
| 30 | | | 44 | 18600 | 58 | 19100 | 65 | 19400 | 70 | 18900 | 74 | 13800 | 76 | 13000 | 78 | 10000 | 79 | 8000 | |
| 35 | | | 34 | 14600 | 52 | 15200 | 61 | 15500 | 66 | 15700 | 71 | 11800 | 74 | 10800 | 76 | 10000 | 78 | 8000 | |
| 40 | | | 20 | 11800 | 45 | 12400 | 56 | 12700 | 63 | 12800 | 68 | 10600 | 71 | 9900 | 74 | 9450 | 76 | 8000 | |
| 45 | | | | | 38 | 10100 | 51 | 10400 | 59 | 10600 | 65 | 9600 | 69 | 9000 | 72 | 8500 | 74 | 8000 | |
| 50 | | | | | 31 | 8250 | 47 | 8600 | 56 | 8800 | 62 | 8800 | 66 | 8200 | 70 | 7650 | 73 | 7050 | |
| 55 | | | | | 19 | 6700 | 41 | 7100 | 52 | 7300 | 59 | 7400 | 63 | 7300 | 67 | 6650 | 70 | 6050 | |
| 60 | | | | | | | 35 | 5500 | 47 | 5800 | 55 | 6000 | 61 | 6100 | 65 | 5800 | 68 | 5250 | |
| 65 | | | | | | | 28 | 4200 | 43 | 4500 | 52 | 4700 | 58 | 4800 | 62 | 4900 | 66 | 4550 | |
| 70 | | | | | | | 17 | 3200 | 38 | 3500 | 48 | 3600 | 55 | 3800 | 60 | 3900 | 64 | 3900 | |
| 75 | | | | | | | | | 32 | 2600 | 44 | 2800 | 51 | 2900 | 57 | 3000 | 61 | 3100 | |
| 80 | | | | | | | | | 25 | 1900 | 40 | 2100 | 48 | 2200 | 54 | 2300 | 59 | 2300 | |
| 85 | | | | | | | | | 16 | 1200 | 35 | 1400 | 45 | 1600 | 51 | 1600 | 57 | 1700 | |
| 90 | | | | | | | | | | | 30 | 900 | 41 | 1000 | 49 | 1100 | 54 | 1200 | |
| 95 | | | | | | | | | | | | 37 | 600 | 46 | 600 | 52 | 700 | | |
| 0 | 9400 | 0 | 8000 | 0 | 4700 | 0 | 2500 | 0 | 800 | | | | | | | | | | |
| | | 1130 | | 790 | | 600 | | 480 | | 400 | | 350 | | 300 | | 270 | | 240 | |

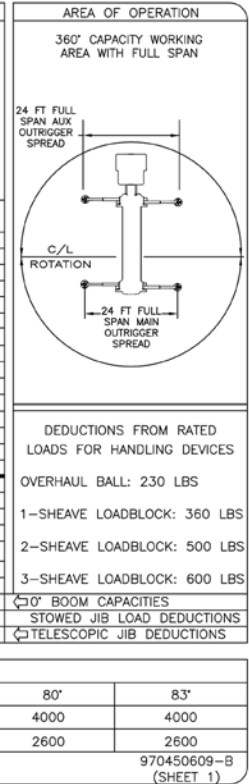
SEE NOTE 2

JIB LOAD CAPACITIES (LBS) FOR ALL BOOM LENGTHS. JIB CAPACITIES ARE FOR FULL SPAN OUTRIGGERS (24 FT)

| LOADED BOOM ANGLE | | 65°* | 70° | 75° | 80° | 83° |
|-------------------|---------------------|------|------|------|------|------|
| TELESCOPING | RETRACTED 28 FT JIB | 1700 | 3100 | 4000 | 4000 | 4000 |
| | EXTENDED 49 FT JIB | 1400 | 2600 | 2600 | 2600 | 2600 |

* DO NOT OPERATE JIBS BELOW THIS ANGLE UNLESS BOOM IS FULLY RETRACTED. SEE NOTE 1.

970450609-B (SHEET 1)



Note 1: When jib is erected, boom must be fully retracted before lowering below minimum boom with jib angles. Retracted boom with jib has no lifting capacity below a 50 degree angle with full span outriggers and below a 65 degree angle not shown on jib load rating chart.

Note 2: Do not lower boom into this area, instability may occur. Hydraulic pressure may not allow raising the boom without retracting boom first.

Charts published herein are intended to be a guide only and should not be construed to warrant application for lifting purposes. Consult supplied operation manual for further details.



QUICK ATTACH PLATFORM FOR AERIAL OPERATION

Altec's patent-pending quick attach platform reduces the overall time required to install the platform on uneven ground. The platform interfaces with the light-weight bracket that seamlessly interfaces and secures to the main boom, the end of the jib, or to the optional composite reach extension. Once the platform is in position on the ground and the bracket is attached to either of the above listed locations, the operator can simply extend the boom until the bracket engages the platform. The last step only requires a member of the ground-crew to quickly engage the spring-loaded, high visibility pins.

LONGER OUTRIGGER JACK CYLINDERS

Longer outrigger jack cylinders boost ground clearance, reduce the need to transport cribbing, free up deck space, minimize setup time, and reduce overall setup effort.



DUAL ENTRY CAB

Altec's dual entry cab provides safe access/egress throughout the entire range of rotation. The 20 degree tilt feature maximizes the viewing spectrum on the job site.



COMPOSITE REACH EXTENSION*

The feature provides an additional layer of protection for aerial workers when working de-energized lines in close proximity to energized lines, reducing the risk of electric-field induction hazards.



* This extension is rated as non-insulated and not intended for energized work.



866-966-2969
sales@altec.com

AIOSAC40152S-0115-v1-r5

210 Inverness Center Drive
Birmingham, AL 35242
Fax 205.449.4774
www.altec.com

For more complete information on Altec products and services, visit us on the web at www.altec.com.

© 2015 Altec Inc
All Rights Reserved

Material and specifications are subject to change without notice. Featured units in photos may include optional features. Please contact an Altec representative for all available options. Charts published herein are intended to be a guide only and should not be construed to warrant application for lifting purposes. Consult supplied operation manual for further details.

Altec® and the Altec logo are registered trademarks of Altec Inc in the United States and various other countries and may not be used without permission.

