



FUWA

TELESCOPIC CRAWLER CRANE

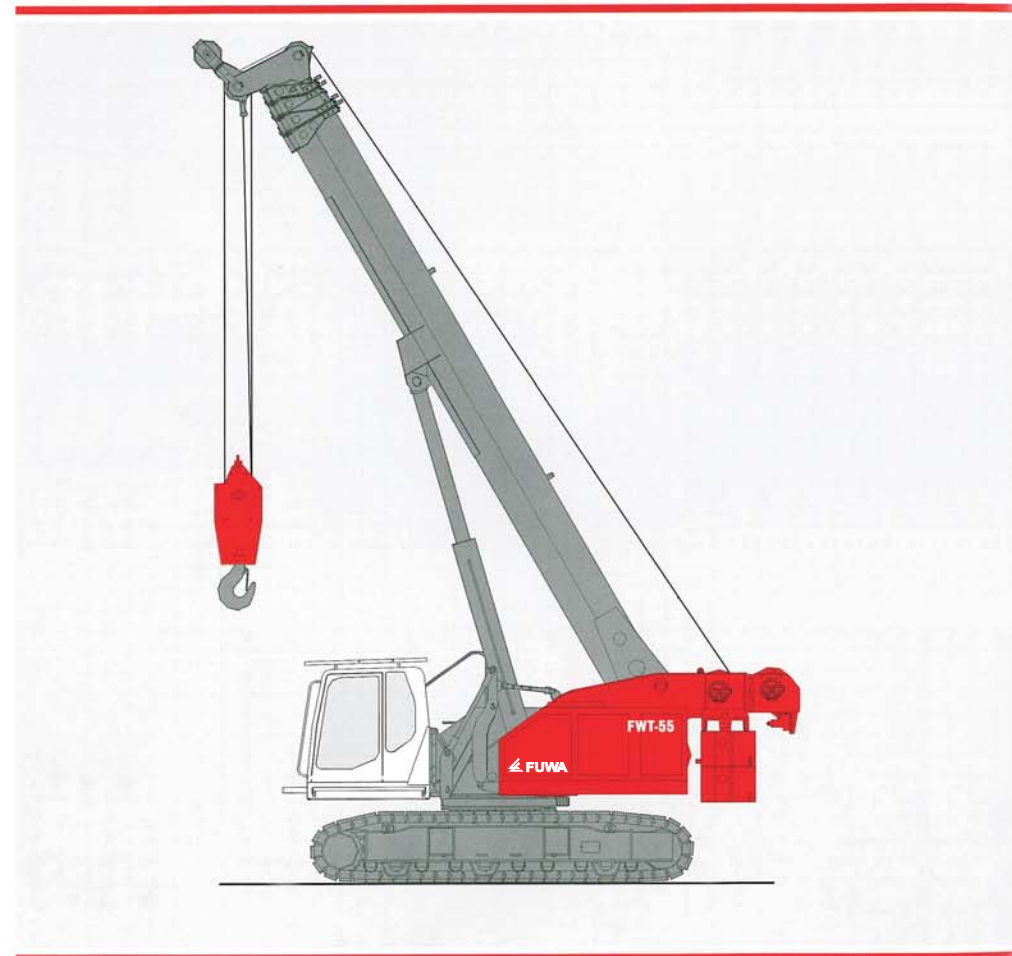
FWT-55



Ruta Panamericana Km. 78,100 (2804) Campana
Provincia de Buenos Aires
Tel: ++ 54 (03489) 403040
Fax: ++ 54 (03489) 403050
ventas@tecmacointegral.com.ar

Salguero 2533, Piso 8 (C1425DEJ)
Ciudad Autónoma de Buenos Aires
Tel: ++54 (011) 4011 5050
Fax: ++ 54 (011) 4011 5055
alquileres@tecmacointegral.com.ar

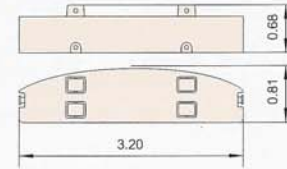
www.tecmacointegral.com.ar



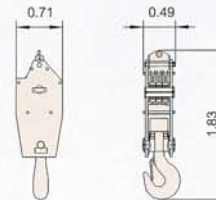


Dimensions for Transportation

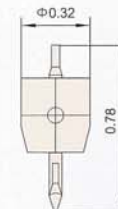
Unit: m



Counterweight	x2
Length	3.20m
Width	0.81m
Height	0.68m
Weight	7800Kg



55T Hook	x1
Length	1.83m
Width	0.71m
Height	0.49m
Weight	762Kg

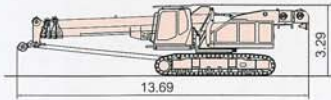


6T Hook	x1
Length	0.78m
Width	0.32m
Height	0.32m
Weight	132Kg

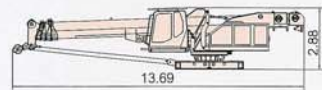


Dimensions for Transportation

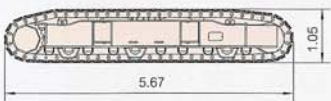
Unit: m



Basic machine	x1
Length	13.69m
Width	3.20m
Height	3.29m
Weight	43500Kg



Basic machine (without side frames)	x1
Length	13.69m
Width	3.20m
Height	2.88m
Weight	30500Kg



Crawler assy	x2
Length	5.67m
Width	0.80m
Height	1.05m
Weight	6500Kg

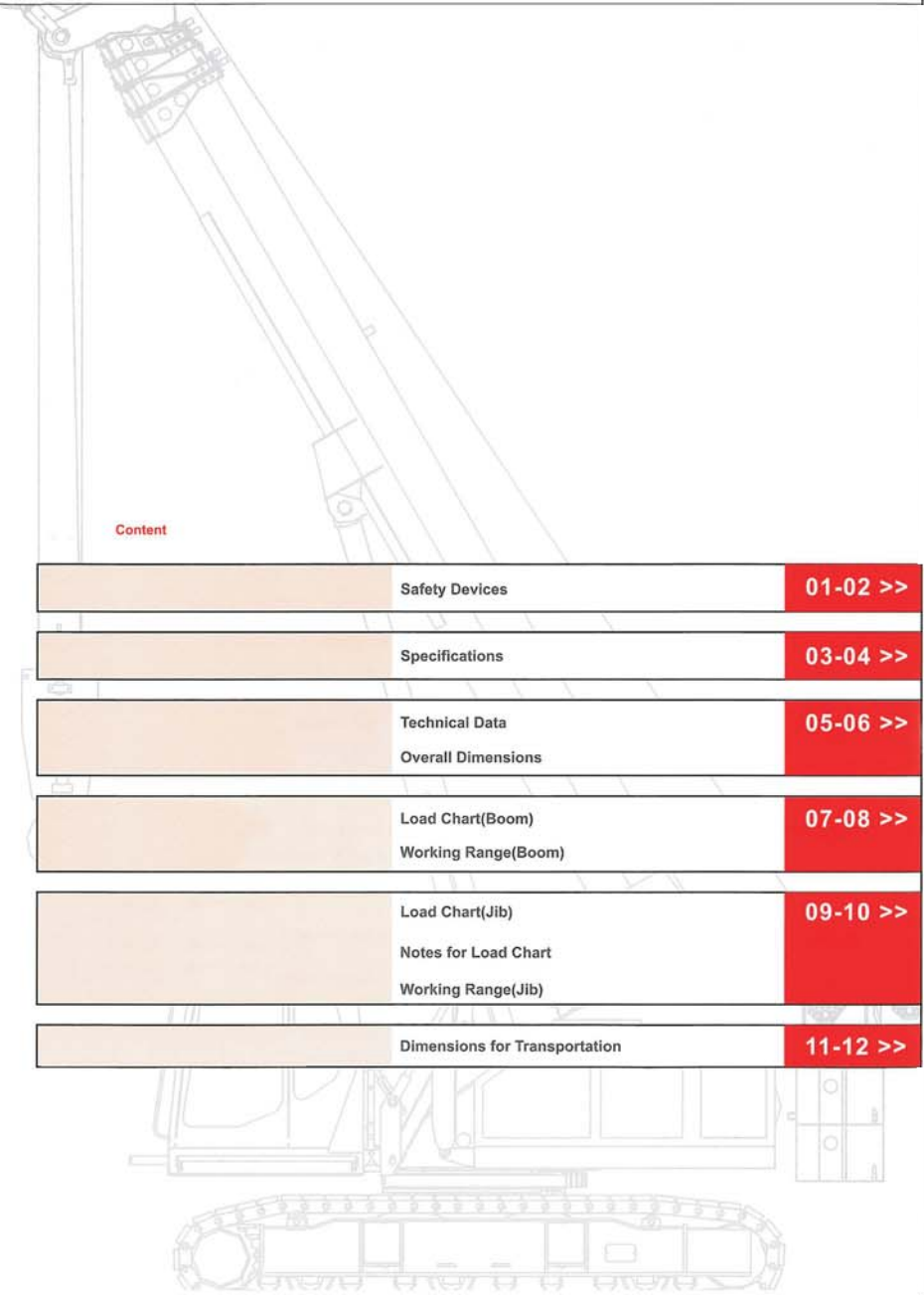


Telescopic boom	x1
Length	11.84m
Width	1.72m
Height	1.44m
Weight	10200Kg



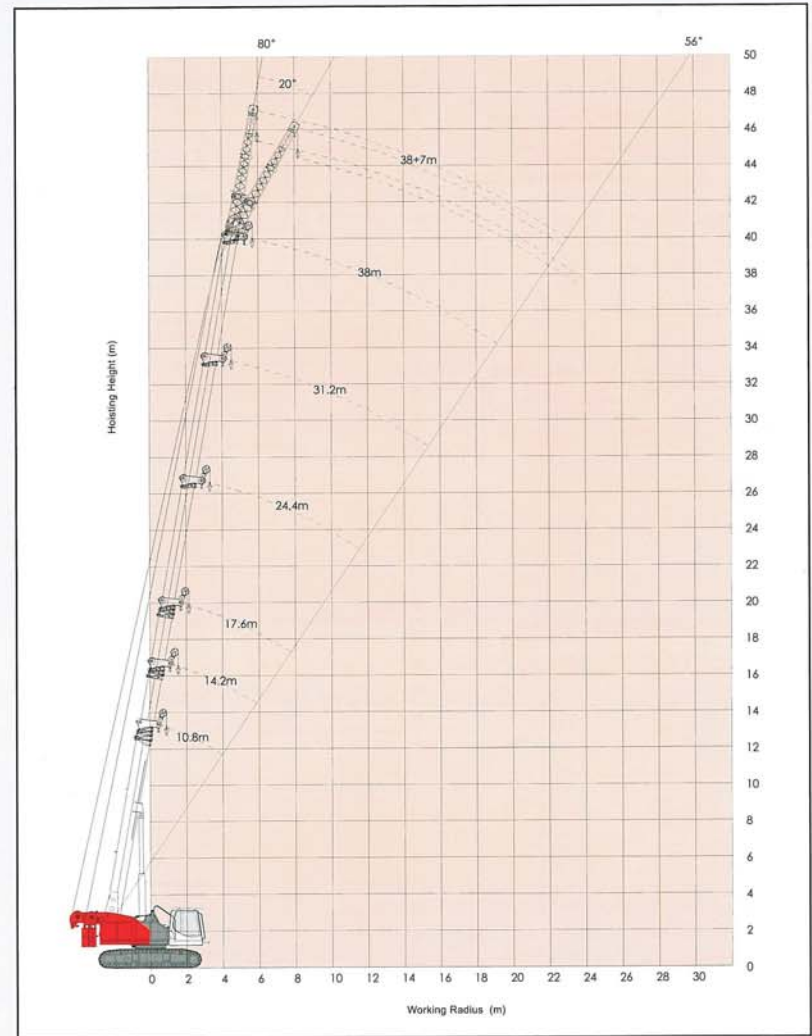
Content

	Safety Devices	01-02 >>
	Specifications	03-04 >>
	Technical Data	05-06 >>
	Overall Dimensions	
	Load Chart(Boom)	07-08 >>
	Working Range(Boom)	
	Load Chart(Jib)	09-10 >>
	Notes for Load Chart	
	Working Range(Jib)	
	Dimensions for Transportation	11-12 >>





Working Range(Jib)




Load Chart(Jib)

10.8m-38m		0°-20° 7m		360°		15.6t	
	0°	20°		80°	78°	76°	74°
80°	3.2	2.8	80°	80°	78°	76°	74°
78°	3.2	2.8	78°	78°	76°	74°	72°
76°	2.8	2.5	76°	76°	74°	72°	70°
74°	2.5	2.1	74°	74°	72°	70°	68°
72°	2.3	1.8	72°	72°	70°	68°	66°
70°	2.1	1.6	70°	70°	68°	66°	64°
68°	1.9	1.5	68°	68°	66°	64°	62°
66°	1.7	1.4	66°	66°	64°	62°	60°
64°	1.4	1.2	64°	64°	62°	60°	58°
62°	1.2	1.0	62°	62°	60°	58°	56°
60°	1.0	0.8	60°	60°	58°	56°	56°
58°	0.8	0.6	58°	58°	56°	56°	56°
56°	0.7	0.5	56°	56°	56°	56°	56°
Parts of line	N=1	N=1	Parts of line	Parts of line	Parts of line	Parts of line	Parts of line

Notes for load chart
Notes:

- Ratings according to GB3811, ISO4302 and ISO4305.
- The rated load in the table is the maximum allowed valued when the crane works on the level and firm ground and under the ideal conditions.
- The unit in the table is ton and the rated load capacity is 75 % of tipping load.
- The rated load is calculated based on the stable load, not including impacting load, the conditions of ground and operating speed, so the driver should reduce corresponding load. Weight of hook and slings should be deducted from the rated capacity.
Weight of hook block: 55t hook block--0.762t, 6t hook block--0.132t
- The counterweight is 15.6t.
- Max. boom hoist angle is 80°
- The allowed max. wind velocity for crane operation is 14m/s.
- Least stable rated position is over the side.

Safety Devices
Moment limiter

The device monitors the work of the crane permanently. You can press the key to set the parameters of all working conditions.
When the actual load is less than 90% of rated load, the indicator on the panel and the load indicator turn green at the same time.
When the actual load is more than 95% of rated load but less than 105% of rated load, the load indicator turns yellow.
When the actual load is equal to or more than 105% of rated load, but less than 110% of rated load the load indicator turns red and sounds continually.
When the actual load is equal to or more than 110% of rated load, the load indicator turns red and sounds continually. All the motions of the crane will be cut off.

Boom upper limit device

Boom upper limit angle is controlled by the load moment limiter. When the boom angle is greater than the limited, the luffing motion will be cut off.

Hook limit device

Both the main and auxiliary hoisting lines are equipped with motion cut devices. On activation, the control circuit is cut, the winches stop, and both visual and audible alarms sound.

Slewing limit device

Controlled by load moment limiter. A key switch on the left control panel. The slewing motion will be cut off if the slewing angle reaches the limited.

Load indicator

Three-color load indicator fitted for the people on site to know the actual load. The loudspeaker is also fitted.

Brakes and locking device

Brakes: brakes fitted on main, auxiliary winches and slewing system
Locking devices: pawl system fitted on main, auxiliary winches. The slewing system is along with locking ability in four positions.

Level gauge

Used for testing the angle between the machine and the ground to ensure the conditions of the ground meet the requirements.

Slewing alarm

Controlled by pressure switch. When the crane swings, the buzzer will sound intermittently to alarm the ambient people.

Monitoring system

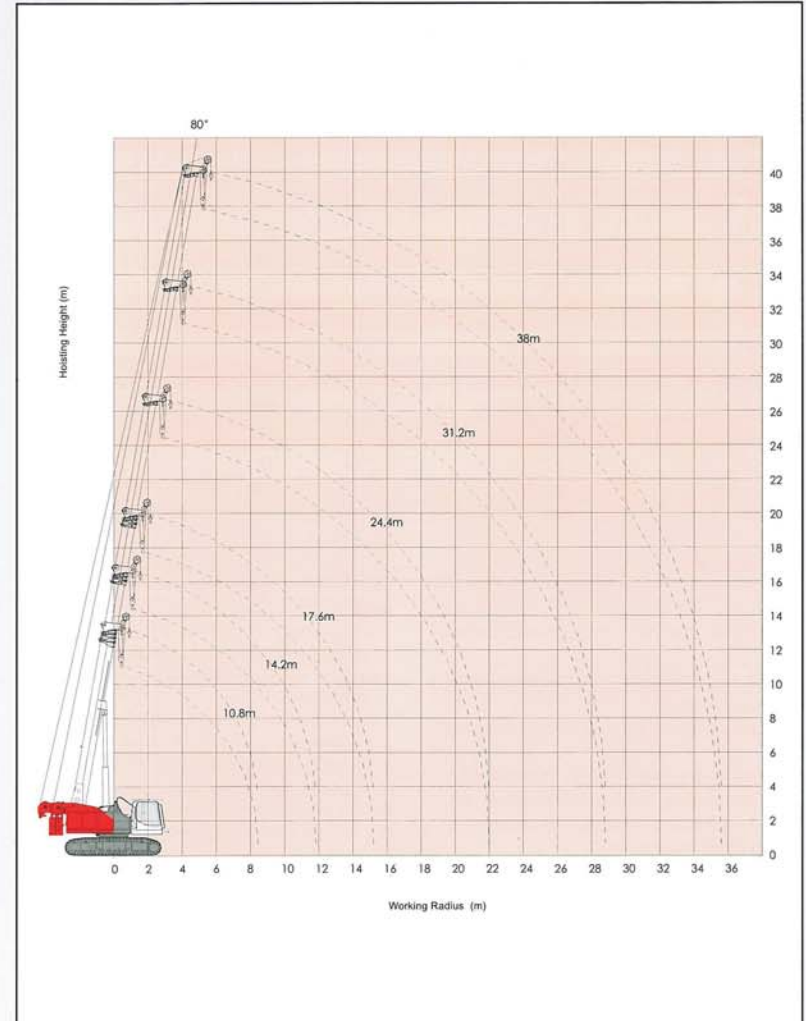
Two cameras fitted on the main and auxiliary drums, the driver can observe the motion of the drums through the display in the cab.

Travel alarm

When the crane travels with more than 70% of rated load, the alarm buzzer will sound. But the crane can continue to travel.



Working Range(Boom)




Load Chart(Boom)

10.8m-38m 360° 15.6t

10.8	10.8-14.2	14.8-17.6	17.6-24.4	24.4-31.2	31.2-38
2.5	55.0	30.0	28.0		2.5
3.0	50.0	30.0	28.0		3.0
3.2	48.0	30.0	28.0		3.2
3.5	45.0	30.0	28.0		3.5
4.0	40.0	30.0	28.0	14.5	4.0
4.5	38.0	30.0	25.5	20.0	4.5
5.0	34.0	28.6	23.6	20.0	5.0
5.5	30.0	26.6	22.0	20.0	5.5
6.0	26.4	24.4	20.5	19.4	6.0
6.5	23.2	22.0	19.2	18.6	6.5
7.0	20.0	18.6	18.0	17.5	7.0
8.0	15.5	16.2	15.7	15.1	8.0
9.0		13.4	13.0	12.8	9.0
10.0		11.3	11.0	10.8	10.0
11.0		9.7	9.4	9.1	11.0
12.0			8.1	7.9	12.0
13.0			7.0	6.8	13.0
14.0			6.1	5.9	14.0
15.0				5.1	15.0
16.0				4.4	16.0
17.0				3.8	17.0
18.0				3.2	18.0
19.0				2.8	19.0
20.0				2.3	20.0
22.0					2.1
24.0				1.4	2.1
26.0					1.7
28.0					1.4
30.0					1.2
Parts of line	N=12	N=10	N=7	N=6	N=4

10.8m-38m 360° 7.8t

10.8	10.8-14.2	14.8-17.6	17.6-24.4	24.4-31.2	31.2-38
2.5	55.0	30.0	28.0		2.5
3.0	50.0	30.0	28.0		3.0
3.2	48.0	30.0	28.0		3.2
3.5	45.0	30.0	28.0		3.5
4.0	39.7	30.0	28.0	14.5	4.0
4.5	31.5	30.0	25.5	20.0	4.5
5.0	26.7	25.5	23.6	20.0	5.0
5.5	22.7	21.7	21.1	20.0	5.5
6.0	19.7	18.8	18.2	19.2	6.0
6.5	17.3	16.4	15.9	16.9	6.5
7.0	15.3	14.5	14.1	15.0	7.0
8.0	12.3	11.6	11.2	12.2	8.0
9.0		9.5	9.1	10.1	9.0
10.0		7.9	7.5	8.4	10.0
11.0		6.6	6.3	7.2	11.0
12.0			5.3	6.2	12.0
13.0			4.4	5.3	13.0
14.0			3.7	4.6	14.0
15.0				4.0	15.0
16.0				3.5	16.0
17.0				3.0	17.0
18.0				2.6	18.0
19.0				2.3	19.0
20.0				2.0	20.0
22.0					1.9
24.0				1.4	1.7
26.0					1.3
28.0					1.0
30.0					0.7
Parts of line	N=12	N=10	N=7	N=6	N=4

Specifications
Superstructure
Power device

A Cummins QS86.7, water-cooled, direct injected turbocharged diesel engine.

Displacement:6.7L

Rated power:128kw/2000rpm

Max. torque:658Nm/1500rpm

Capacity of fuel tank:400L

Capacity of hydraulic oil tank:500L

Rope diameter:ø18mm

Rope length:200m

Rope speed:120m/min

Derricking device

One single acting hydraulic cylinder with imported counterbalance valve.

Boom hoist angle: -2°~80°

Hydraulic system

Pumps and motors are manufactured by Rexroth, Load-sensing control, double variable displacement pump and M7 main valve. The variable displacement motors for main and auxiliary hoists can realize the infinitely variable speeds. One single hydraulic cylinder for luffing motion. The advanced design of oil circuit and the Cindy counterbalance valve fitted with load-compensation make the luffing motion smoother.

Slewing device

The slewing system provides 360° rotation and the speed is 0~1.71rpm.

The cabin

Fully enclosed, with 1.7m of elevation and 20°tilting angle. The fitted with air-conditioning, heater, rear view mirror, windshield wipers, stereo, colorful electronic monitor, load moment limiter, adjustable driver's chair and fire extinguisher.

Electronic monitoring system

Permanently monitor the motions of main and aux. winches.

Counterweight

2 individual counterweights are fitted,resulting in a total of 15.6t.

Main winch and aux. winch

Driven by the hydraulic motor from Rexroth through the reduction gear with wet-disc type brake made in Shandong. Wet-disc type brake. Drum:ø442mm

Undercarriage
Lower frame

The structural steel plate welded improves the stability of lower frame. The side frame has the function of extension and retraction.

Track rollers

Each side has 10 track rollers. All track rollers are equipped with bushings and seals. They are coated with the lubricating oil.

Track shoe

116 pieces of track shoe, the width of track shoe is 800mm. Travel speed is greatly improved because track shoe is secured on chain link with bolts. The tension of track shoe can be adjusted through the hydraulic jack.

Crawler drive

Independent hydraulic propel driver is built into each crawler side frame. Each drive consists of a hydraulic motor propelling a drive sprocket through a planetary reduction gear. The whole driving device is built into the side frame with compact structure.

Travel speed

0~1.3 Km/h

Gradeability

30%

The attachment
Boom

Buckling and torsion resistant design of high-tensile structure steel, oviform boom profile Length: 10.8~38m

Jib

Length: 7m:Two kinds of offset angle: 0°and 20°

Hook blocks

55t hook 6t hook

The symbols of working conditions


Boom

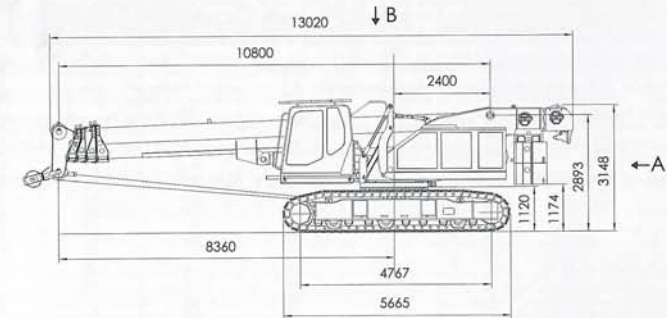
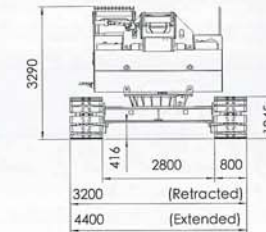


Jib


Technical Data

Descriptions		Unit	Data
Max.lifting capacity		t	55
Boom		m	10.8~38
Jib		m	7
Max. length of boom plus jib		m	38+7
Boom angle		o	-2~80
Working speed	Rope speed	Hoist	m/min ※High 120
		Lower	m/min ※120
	Swing	r/min	0~1.71
	Travel	km/h	※0~1.3
Max. parts of line	12	Single line pull	5t
Gradeability(boom retracted, the cab in the rear)		%	30
Engine output/rotating speed		kw/rpm	128kw/2000rpm
Weight of whole machine		t	59.1
Counterweight		t	15.6
Overall dimensions		mm	13020×3200×3290
Ground pressure		kg/cm ²	0.7

Note: Speed with ※ may vary with the load.

Overall Dimensions

A View

B View
