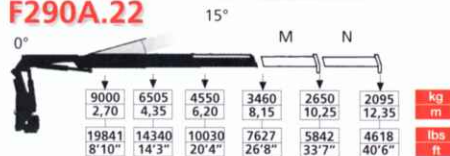
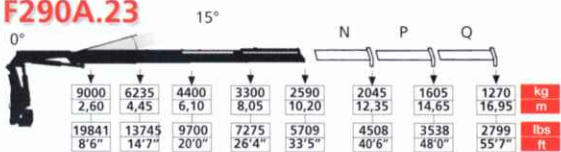




F290A.22



F290A.23



F290A.24



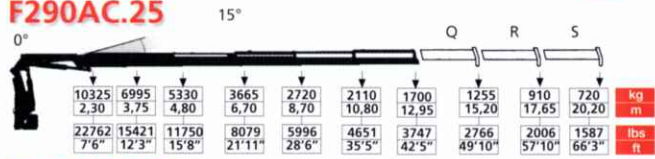
F290AC.24



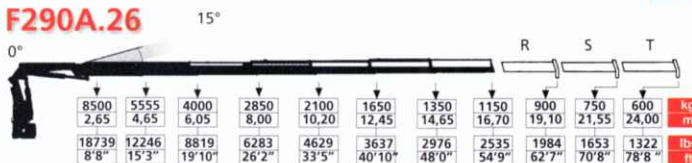
F290A.25



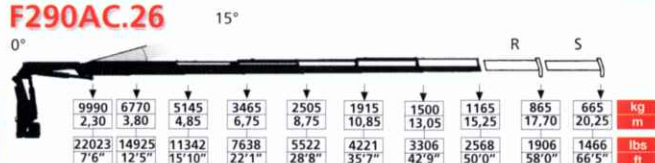
F290AC.25



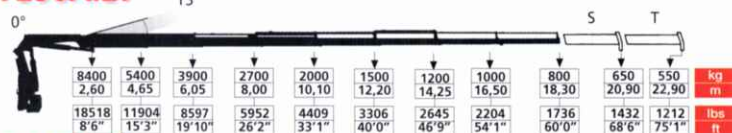
F290A.26



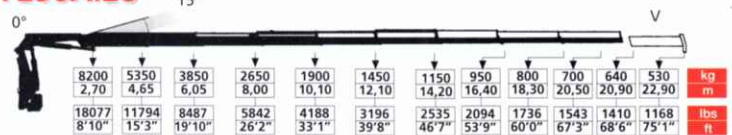
F290AC.26



F290A.27



F290A.28



	T		M		R		K		MPa		I/min		oil		
	tm	lbs.ft	m	ft	°	kNm	lbs.ft	Mpa	psi	l/min	gal/min	l	gal	kg	lbs
F290A.22	28,3	204694	8,15	26'8"	400	41,0	30248	30,5	4430	60-80	16-21	180	48	3070	6768
F290A.23	27,7	200354	10,20	33'5"	400	41,0	30248	30,5	4430	60-80	16-21	180	48	3220	7098
F290A.24	26,8	193884	12,30	40'0"	400	41,0	30248	30,5	4430	60-80	16-21	180	48	3465	7638
F290AC.24	26,9	194568	10,70	35'1"	400	41,0	30248	30,5	4430	60-80	16-21	180	48	3365	7418
F290A.25	26,4	190951	14,60	47'10"	400	41,0	30248	30,5	4430	60-80	16-21	180	48	3665	7418
F290AC.25	26,5	191675	12,95	42'5"	400	41,0	30248	30,5	4430	60-80	16-21	180	48	3565	7859
F290A.26	25,8	186611	16,70	54'9"	400	41,0	30248	30,5	4430	60-80	16-21	180	48	3840	8465
F290AC.26	25,8	186611	15,25	50'0"	400	41,0	30248	30,5	4430	60-80	16-21	180	48	3740	8245
F290A.27	25,3	182995	18,30	60'0"	400	41,0	30248	30,5	4430	60-80	16-21	180	48	3980	8774
F290A.28	24,8	179378	20,90	68'6"	400	41,0	30248	30,5	4430	60-80	16-21	180	48	4110	9060