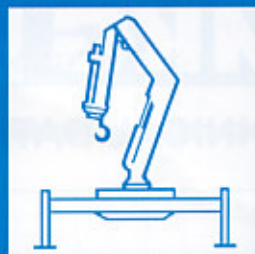


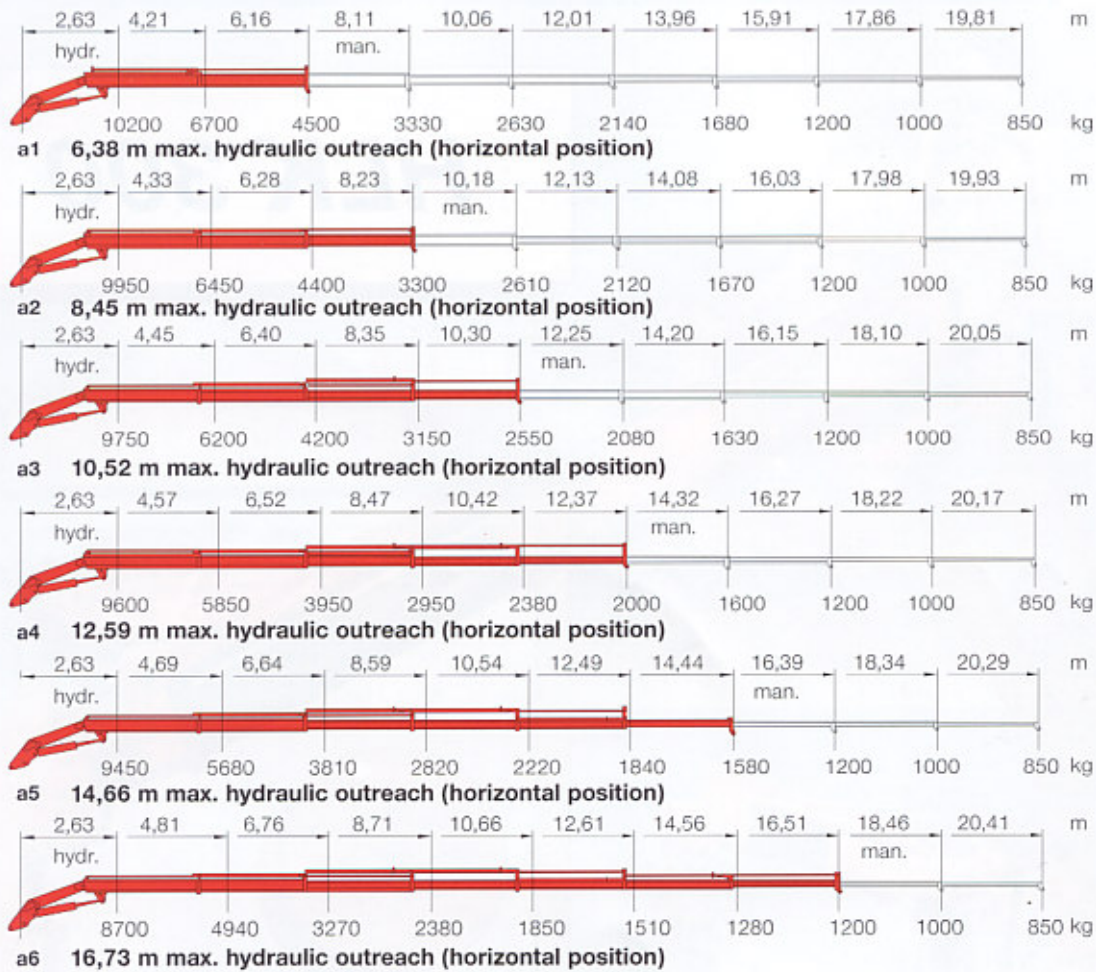
# MIKG



***HLK 300***



## TECHNICAL DATA



Position of main boom + 20°. All lifting capacities for max. hydr. outreach are to be understood excluding any manual extensions. All data given without obligation and subject to alteration without notice.

### HLK 300 (up to 300 kNm)

Technical Data		a1	a2	a3	a4	a5	a6
		single extension	double extension	triple extension	quadruple extension	quintuple extension	sixfold extension
Standard reach max.	m	6,38	8,45	10,52	12,59	14,66	16,73
Hydraulic extension (under load)	m	1,95	3,90	5,85	7,80	9,75	11,70
Height in transport position (from subframe)	m	2,39	2,39	2,39	2,47	2,56	2,63
Width of crane, support legs retracted (standard)	m	2,48	2,48	2,48	2,48	2,48	2,48
Stabilizer width (standard)	m	5,70	5,70	5,70	5,70	5,70	5,70
Width of crane incl. b2 (extra wide stabilizers)	m	---	---	---	---	---	---
Stabilizer width incl. b2 (b6 on request)	m	---	---	---	---	---	---
Max. operating pressure	bar	300	300	300	300	300	300
Min. engine output	kw/hp	28,5/39	28,5/39	28,5/39	28,5/39	28,5/39	28,5/39
Min. pump capacity	l/min	55	55	55	55	55	55
Slewing range	°	410	410	410	410	410	410
Slewing moment	Nm	40000	40000	40000	40000	40000	40000
Capacity of oil tank	l	85	85	85	85	85	85
Slewing speed 410°	sec.	38	38	38	38	38	38
Luffing speed from min. to max.	sec.	28	28	28	28	28	28
Dead weight incl. extendable supports	approx. kg	3375	3585	3765	3915	4065	4205
Add. weight for b5 (4-fold stab. system)	approx. kg	500	500	500	500	500	500
Space required (depending on superstructure)	m	1,03	1,03	1,03	1,03	1,15	1,15
Space required incl. d3 (hose-guide)	m	1,12	1,12	1,17	1,17	1,29	1,29

# a real truck crane in the 30 m/t category

**Stabilizers hydr. operated in vertical and horizontal direction,** equipped with piloted twin stop-valves to prevent unintentional retraction and/or extension of support legs.

**Dual linkage system** at main boom and jib.

Large reach owing to **6 hydr. extensions;** all man. extensions fully retractable.

**All rams are double acting** with hard chromium plated piston rods.

**Load holding valves** at lifting-, jib- and extension rams to guarantee position of lifting boom and load at all times and to prevent unintentional lowering of same.

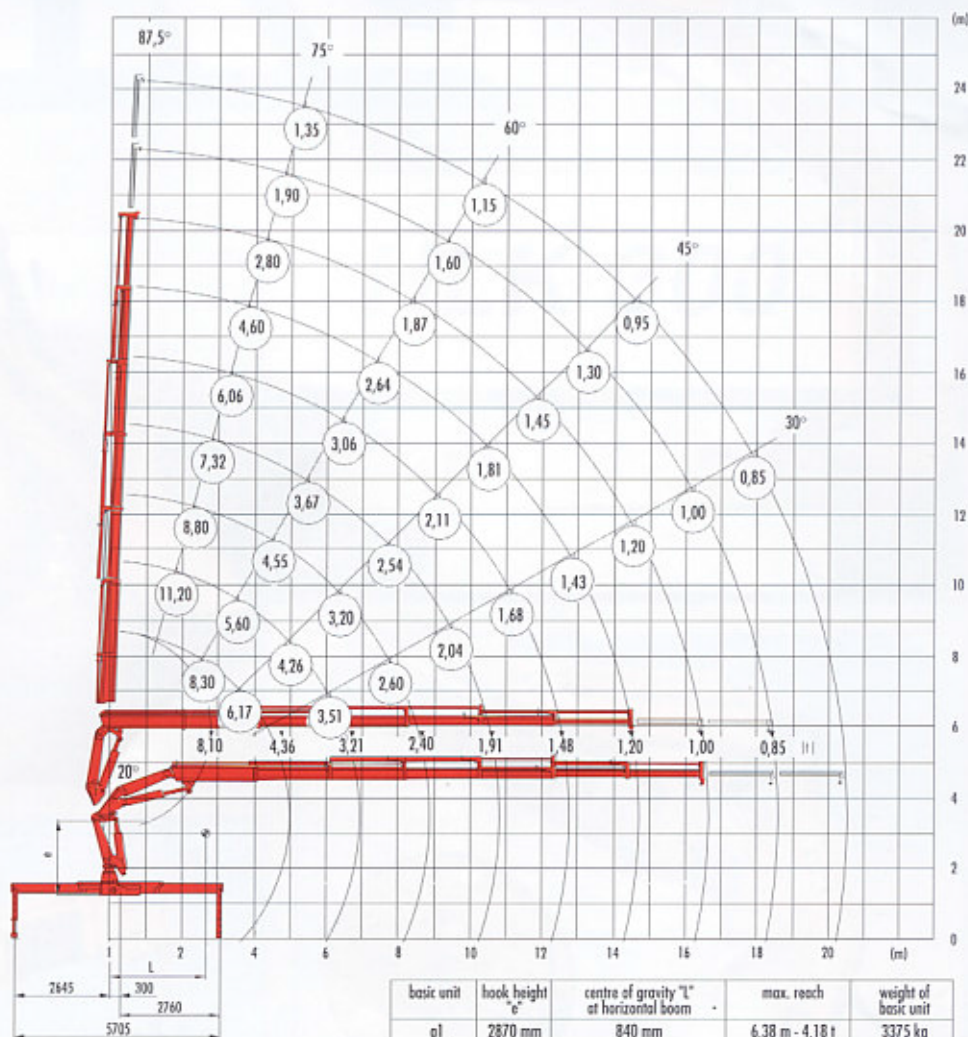
**3rd articulation** (hydr. jib) on request.

**High precision control valves** with integrated safety- and suction valves for two motions simultaneously.

**Low dead weight** due to high tensile steel components.

Cranes fitted behind the cabin may require a slewing limitation for stability reasons, if the chassis is too light.

**Made in Germany;** All components of DIN-standard.



basic unit	hook height e	centre of gravity "L" at horizontal boom	max. reach	weight of basic unit
a1	2870 mm	840 mm	6,38 m - 4,18 t	3375 kg
a2	2740 mm	1200 mm	8,45 m - 3,05 t	3585 kg
a3	2610 mm	1530 mm	10,52 m - 2,36 t	3765 kg
a4	2480 mm	1840 mm	12,59 m - 1,86 t	3915 kg
a5	2265 mm	2250 mm	14,66 m - 1,48 t	4065 kg
a6	2135 mm	2680 mm	16,73 m - 0,98 t	4205 kg

