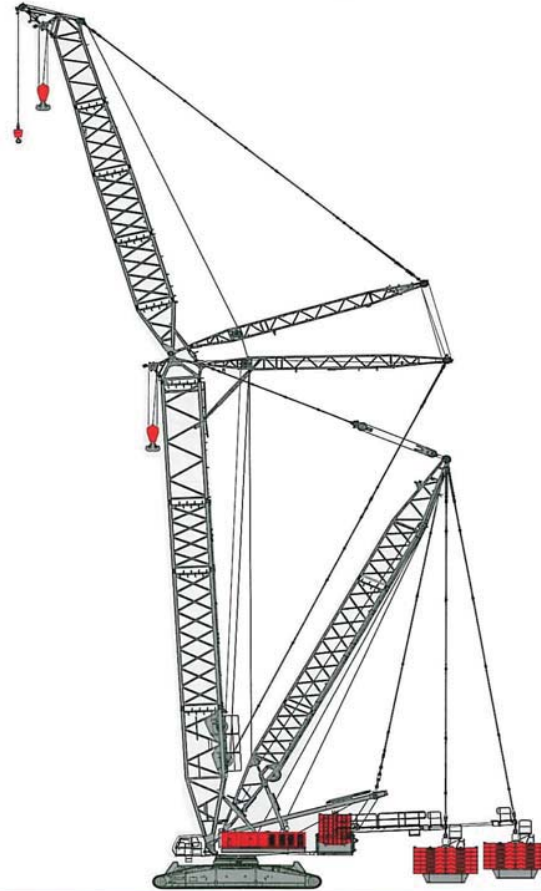


HYDRAULIC CRAWLER CRANE

**QUY750**





### Safety Device

<b>Hook block upper limiter and boom backstop device</b>	Used for preventing material damage to the machine and tipping accidents due to over-hoist of winch.
<b>Hook upper limiter (anti two block)</b>	When the hook is lifted up as high as to touch the plumb, the microswitch will be activated and disconnected by the restoration of spring, cutting off the control circuit while the buzzer gives audible alarm and the indicator lights up. At the same time, the rise of the hook will stop automatically.
<b>Boom tople prevention device</b>	Both angle sensor and moment limiter can measure boom angle, so the earlier control signal given by whichever will be effective to stop boom movement.
<b>Moment limiter</b>	The limiter can monitor the current load of all working attachments, for which the data can be set by buttons. When the green light is lit and the moment proportion bar on display green, this indicates that the load is less than 90% of the maximum rated capacity. When the yellow light is lit and the moment proportion bar yellow, this means that the crane is between 90% and 100% of the maximum rated capacity, also an intermittent audible alarm sounds. When the crane reaches 105% of the maximum rated capacity, the red light comes on, the moment proportion bar shows red, a continuous alarm sounds, and all motions which would bring the crane into an unsafe state are disabled.
<b>Tricolor load indicator</b>	For the operator' s easy knowledge of actual load and rated load, the crane adopts tricolor load indicator as said above, and is also equipped with interphone for communication between operator and directing personnel.
<b>Anemoscope</b>	Anemometer, or the wind speed sensor, is installed on the top of boom to test wind speed which is shown in the moment limiter display.
<b>Brake and locking device</b>	The main hoist winch, auxiliary hoist winch, main derricking winch, and auxiliary derricking winch as well as slew mechanism are all equipped with brake and locking device.
<b>Pull sensor and angle sensor</b>	Pull sensors are installed on mast, front strut for luffing jib, and superlift mast to measure pull force, the value of which are calculated by moment limiter, showing the weight of load. The angle sensors are installed on the boom foot, luffing jib foot, and superlift boom foot as well as boom head and luffing jib head to measure the respective angle and included angle.
<b>Gradienter</b>	The gradienter is used for measuring the angle between cranebody and level surface to ensure the machine can work in as level position as to meet the requirements.
<b>Rope over feeding prevention system (three-loop protection)</b>	Three-loop protection devices are installed on main hoist winch and auxiliary hoist winch, preventing rope from being over fed.
<b>Slew and travel alarm</b>	The alarm will sound when the platform is slewing or crane is traveling.


**Specifications**
**Superstructure**
**Engine**

The crane is powered by Cummins QSK15 Diesel Engine, 6-cylinder, water cooled, rated power 418 KW/1800rpm, up to Tier3/Stage II Emission standard, fitted with air pre-filter, dual-process air filter, muffler, cooler, radiator and fan used are the designated accessories of Cummins. The transfer case provides drive via five variable displacement plunger pumps and two gear pumps to all function modules; four 12V maintenance-free batteries together provide 24V power and there is a 75 amp AC generator equipped, too. A 740L fuel tank for engine is installed on power station and the fuel level is shown by indicator on operator's cab.

**Control System**

Modulating electronic-over-hydraulic controls provide infinite speed response directly proportional to control lever movement. Fault diagnosis system is built-in for troubleshooting. The dual-color touch screen enables operator to operate moment limiter. Automatic power control optimizes efficiency of the engine output. The controls adjust Rexroth RC controller, display, coder, moment limiter and monitor system. Data transmission is conducted through Controller Area Network (CAN)-Bus, improving system reliability.

**Hydraulic System**

Under electronic-over-hydraulic control, the system consists of main circuit, control system, and auxiliary system. The key hydraulic elements are from Rexroth. It adopts LUDV load independent flow distribution system. The pressure of system is 30Mpa. The system is equipped with a hydraulic oil tank of 1600L, cartridge and hydraulic oil cooler. Each function is equipped with relief valves to protect the hydraulic circuit from overheat or shock.

**Hoist Winches**

Normally, the basic machine is equipped with two hoist winches, main hoist winch and auxiliary hoist winch. Besides there is also an optional hoist winch available. The grooved drum is independently driven by variable displacement hydraulic motor via built-in planetary reduction gear that is compact-structured while easy to install and dismantle. The brake is normal close type.

**Hoist Winches**

Drum diameter: 650mm  
Max rope speed: 0~130m/min  
Wire rope diameter: 28mm  
Wire rope length: 1300m

**Derricking Winch**

The grooved drum is independently driven by variable displacement hydraulic motor via built-in planetary reduction gear that is compact-structured while easy to install and dismantle. The brake is normal close type.

**Main Derricking Drum**

Drum diameter: 650mm  
Max rope speed: (0~60) × 2m/min  
Wire rope diameter: 28mm  
Wire rope length: 760m

**Auxiliary Derricking Drum**

Drum diameter: 650mm  
Max rope speed: 0~130m/min  
Wire rope diameter: 28mm  
Wire rope length: 1300m

**Superlift Derricking Drum**

Drum diameter: 650mm  
Max rope speed: 0~130m/min  
Wire rope diameter: 28mm  
Wire rope length: 1400m

**Slew Mechanism**

Slew mechanism has close hydraulic circuit and the platform is driven to slew from 0 to 360 degree at speed from 0 to 0.75rpm by two hydraulic motors via planetary reduction gear running in oil. The slew bearing has six rows of supporting rollers.

**Centerweight**

Central ballast: 95L, 6 blocks, 2 trays;  
Rear counterweight: 245t, 18 blocks, 2 trays;  
Superlift counterweight: 400t, 30 blocks, 1 Tray.

**Operator's Cab**

The operator's cab, fully closed, of steel frame structure, with low noise inside, is equipped with large windshield wiper, air conditioner, skylight, meters for all functions, control devices, extinguisher, air ventilator, CD player, to name but a few, making it comfortable to work in. Operator's seat and control levers are ergonomically designed. The cab can tilt up 20 degrees, enlarging the view of operator. Inside the cab are the displays for video cameras installed to monitor winches. The cab can be placed in front of superstructure, reducing transportation width.

**Undercarriage**

The undercarriage consists of the chassis and two crawlers. The chassis and crawlers are connected by power-actuated pins, making it easy to install and dismantle.

**Chassis (Lower Frame)**

The chassis is a weldment made from high strength alloy steel, box structure, torque resistant.

**Crawlers**

The crawlers are weldments made from high strength alloy steel, torque resistant. Track shoes are made from high strength cast steel after heat treatment, 1500mm wide each. The tension of track can be adjusted by the propelling of cylinders and secured by adding or reducing shims. The automatic centralized lubrication system is standard.

**Crawler Drive**

Four wheel drive: each crawler is propelled by two variable displacement motors via closed planetary reduction gear running in oil, normal close hydraulic brake with spring. Both crawlers can stably travel at infinite speed under operator's control, 1km/h at maximum, independently or reverse.

**Working Attachments**
**Boom Combination**

Boom is made from imported high strength steel pipes, lattice structure, consisting of the following combinations:  
heavy-duty boom; heavy-duty boom+superlift mast; heavy-duty boom+superlift mast+superlift counterweight; heavy-duty and light-duty combined boom; heavy-duty and light-duty combined boom+superlift mast; heavy-duty and light-duty combined boom+superlift mast+superlift counterweight; luffing jib; luffing jib+superlift mast; luffing jib+superlift mast+superlift counterweight; heavy-duty boom+heavy-duty fixed jib+superlift mast; heavy-duty boom+heavy-duty fixed jib+superlift mast+superlift counterweight; special boom for wind mill generator+superlift mast.

**Heavy-duty boom (H)**

Boom length: 24m~84m  
Combination: 12m boom foot section, 12m and 6m boom insert, 10.5m tapered section, 1.5m boom top section.

**Heavy-duty boom+superlift mast (HS)**

Boom length: 36m~138m  
Superlift structure: 30m superlift mast consisting of 12m foot section, 12m insert, 12m top section

**Heavy-duty boom+superlift mast+superlift counterweight (HSD)**

Boom length: 36m~138m  
Superlift structure: 30m superlift mast consisting of 12m foot section, 12m insert, 12m top section, 0~400t counterweight

**Heavy-duty and light-duty combined boom (H/L)**

Boom length: 36m~102m  
Boom: 12m boom foot section, 12m and 6m boom insert, 10.5m tapered section, 6m luffing jib tapered section, 12m and 6m luffing jib insert and 7.5m luffing jib top section.

**Heavy-duty and light-duty combined boom+superlift mast (HSL)**

Boom length: 36m~150m  
Superlift structure: 36m superlift mast

**Heavy-duty/light-duty combined boom +SL mast+SL counterweight (HSD/L)**

Boom length: 36m~150m  
Superlift structure: 30m superlift mast, 0~400t superlift counterweight

**Luffing jib (HT)**

Boom length: 36m~60m; luffing jib length: 30m~102m  
Boom 12m boom foot section, 12m and 6m boom insert, 10.5m tapered section, 1.5m boom top section  
Luffing jib: 4.5m basic section, 12m and 6m luffing jib insert and 7.5m luffing jib top section

**Luffing jib+SL mast+SL counterweight (HTSD)**

Boom length: 42m~96m; luffing jib length: 30m~102m  
Superlift structure: 36m SL mast, 0~400t SL counterweight

**Heavy-duty boom+heavy-duty jib+SL mast (HZS)**

Boom length: 42m~96m; jib length: 12m, 18m  
Offset angle: 12°~20°  
Superlift structure: 36m SL mast

**Heavy-duty boom+heavy-duty jib+SL mast+SL counterweight (HZSD)**

Boom length: 42m~96m; jib length: 12m, 18m  
Offset angle: 12°~20°  
Superlift structure: 36m SL mast, 0~400t SL counterweight

**Special boom for wind mill generator+superlift mast (HWS)**

Boom length: 84m~114m  
Combination: 12m boom foot section, 12m and 6m boom insert, 10.5m tapered section, 6m luffing jib tapered section, 2m special transition section for wind mill generator and 5.5m special top section for wind mill generator  
Superlift structure: 36m SL mast

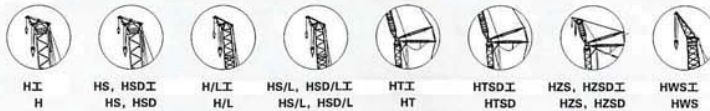
**Hook Block**

Type	Lifting capacity	Max pins of link	Weight
2 × 400t	750t	2 × 28	20.00t
250t	250t	19	7.00t
150t	150t	11	6.00t
50t	50t	3	1.55t
15t	15t	1	0.98t

Note: a 750t dust pulley block hook can be converted to 400t single pulley block hook.

**Work Attachment Symbols**

1. Heavy-duty boom: H
2. Heavy-duty boom+superlift (SL) mast: HS
3. Heavy-duty boom+SL mast+SL counterweight: HSD
4. Heavy-duty and light-duty combined boom: H/L
5. Heavy-duty and light-duty combined boom+SL mast: HSL
6. Heavy-duty and light-duty combined boom+SL mast+SL counterweight: HSD/L
7. Luffing jib: HT
8. Luffing jib+SL mast+SL counterweight: HTSD
9. Heavy-duty boom+heavy-duty fixed jib+SL mast: HZS
10. Heavy-duty boom+heavy-duty fixed jib+SL mast+SL counterweight: HZSD
11. Special boom for wind mill generator+SL mast: HWS

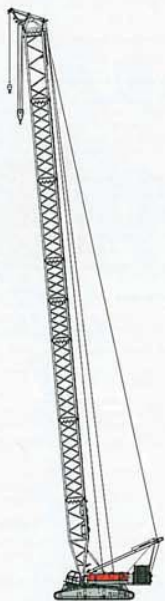
**Graphic symbols of working attachments:**




Boom Combination

**Heavy-duty boom(H)**

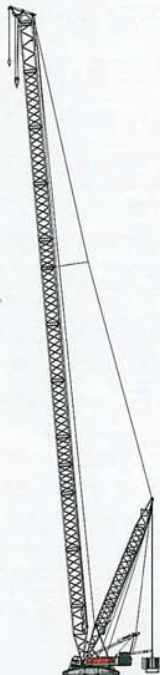
Max lifting capacity: 650t x 6m  
Max length: 84m



Boom  
24m-84m

**Heavy-duty boom+SL mast +SL counter-weight(HSD)**

Max lifting capacity: 750t x 7m  
Max length: 138m



Boom  
36m-138m

**Heavy-duty and light-duty combined boom (H/L)**

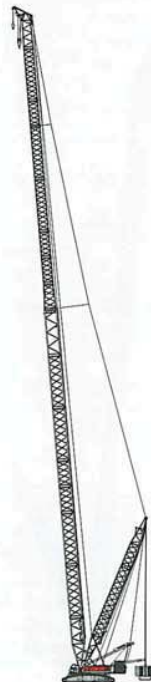
Max lifting capacity: 400t x 7m  
Max length: 102m



Boom  
36m-102m

**Heavy-duty/light-duty combined boom +SL mast+ SL counterweight (HSD/L)**

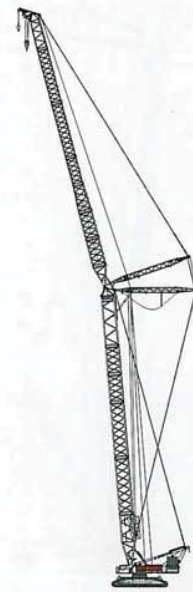
Max lifting capacity: 400t x 7m  
Max length: 150m



Boom  
36m-150m

**Luffing jib ( HT )**

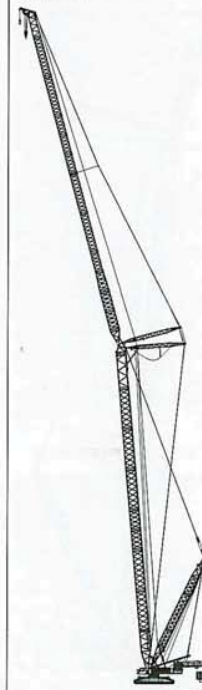
Max lifting capacity: 250t x 14m  
Max boom and jib combination: 60m+60m



Boom | Luffing jib  
36m-60m | 30m-102m

**Luffing jib+SL mast+SL counterweight ( HTSD )**

Max lifting capacity: 380t x 14m  
Max boom and jib combination: 96m+102m



Boom | Luffing jib  
42m-96m | 30m-102m

Technical Data

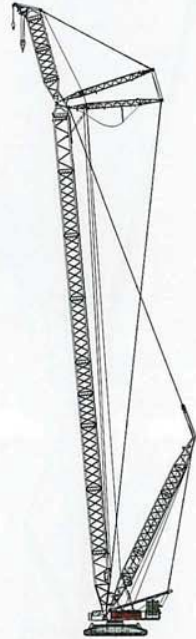




Boom Combination

**Heavy-duty boom +heavy-duty jib +SL mast ( HZS )**

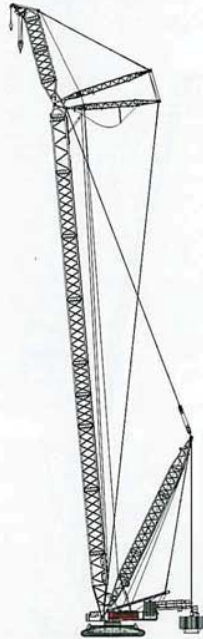
Max.lifting capacity: 340t x 10m  
Max.boom and jib combination: 96m+18m



Boom 42m-96m | Jib 12m, 18m

**Heavy-dutyboom+heavy-duty jib+SL mast+ SL counterweight ( HZSD )**

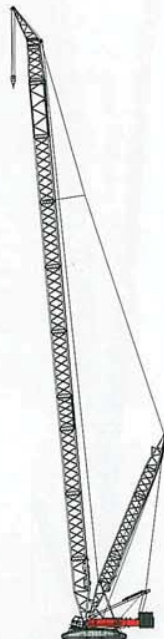
Max.lifting capacity: 580t x 10m  
Max.boom and jib combination: 96m+18m



Boom 42m-96m | Jib 12m, 18m

**Special boom for wind mill generator +SL mast ( HWS )**

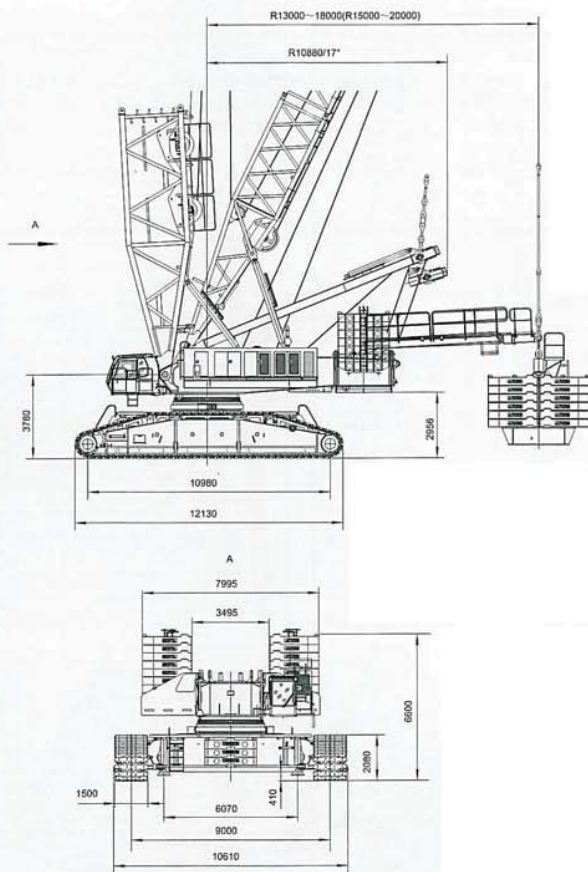
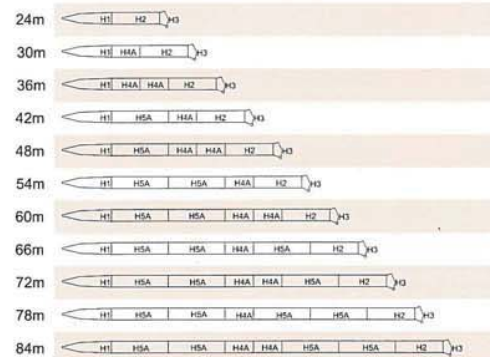
Max.lifting capacity: 140t x 24m  
Max. boom and jib combination: 114m



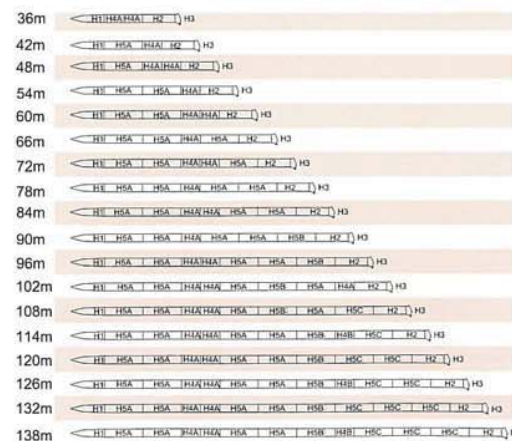
Boom 84m-114m

Technical Data

Descriptions		Data	
Without superlift	Heavy-duty boom	Max rated lifting capacity(t)	650 ( 6m load radius )
		Length(m)	24-84
	Heavy-duty/light-duty combined boom	Max rated lifting capacity(t)	400 ( 7m load radius )
		Length (m)	36-102
	Luffing jib	Lifting capacity(t)	250 ( 14m load radius )
		Boom length(m)	36-60
Luffing jib length(m)		30-102	
Heavy-duty fixed jib	Max rated lifting capacity(t)	338 ( 10m load radius )	
	Boom length (m)	42-96	
	Fixed jib length(m)	12, 18	
With superlift	Special boom for wind mill generator	Max rated lifting capacity(t)	140 ( 24m load radius )
		Length(m)	84-114
	SL mast	Length(m)	36
		Slew radius(m)	13, 18
	SL counterweight	Weight(t)	0-400
		Slew radius(m)	13-18; 15-20
	Heavy-duty boom	Max rated lifting capacity(t)	750 ( 7m load radius )
		Length(m)	36-138
	Heavy-duty/light-duty combined boom	Max rated lifting capacity (t)	400 ( 7m load radius )
		Length(m)	36-150
Luffing jib	Lifting capacity(t)	380 ( 14m load radius )	
	Boom length(m)	42-96	
	Luffing jib length(m)	30-102	
Heavy-duty jib	Lifting capacity(t)	580 ( 13m load radius )	
	Boom length(m)	42-96	
	Fixed jib length(m)	12, 18	
Hook type ( t )		15/50/150/250/750(400 x 2)	
Working capacity	Main/aux. hoist winch speed ( m/min )		0-130
	Main derricking drum speed ( m/min )		(0-60) x 2
	Luffing jib derricking drum speed ( m/min )		0-130
	SL mast derricking drum speed ( m/min )		0-130
	Slew speed ( r/ min )		0-0.75
	Travel speed ( km/h )		0-1.0
Weight (with 24m boom)(t)		615	Ground pressure(kg/cm <sup>2</sup> ) 1.72
Boom derricking angle(° )		30-85	Luffing jib-attached boom derricking angle(° ) 67, 77, 87
Luffing jib derricking angle(° )		20-75	
Max lifting torque( t · m )		With SL structure 9500	
Cranebody transportation dimension ( L x W x H )		13400 x 3300 x 2440	
Engine	Model		QSK15 Cummins electronic control diesel engine
	Power ( KW )		418
	Revolution ( rpm )		1800


**Overall Dimensions**

**Boom and Jib Combinations**
**Heavy boom(H)**

**Note**

Symbol	Boom length	Remarks
H1	12m	Boom foot section
H2	10.5m	10.5m boom insert
H3	1.5m	Boom head
H4A	6m	6m boom insert A
H5A	12m	12m boom insert A

**Boom+SL mast (HS)  
Boom+SL mast+SL counterweight (HSD)**

**Note**

Symbol	Boom length	Remarks
H1	12m	Boom foot section
H2	10.5m	10.5m boom insert
H3	1.5m	Boom head
H4A	6m	6m boom insert A
H4B	6m	6m boom insert B
H5A	12m	12m boom insert A
H5B	12m	12m boom insert B
H5C	12m	12m boom insert C

Note: ☆ shows the position of connecting waist rope.



Rated Lifting Capacity Chart ( H )



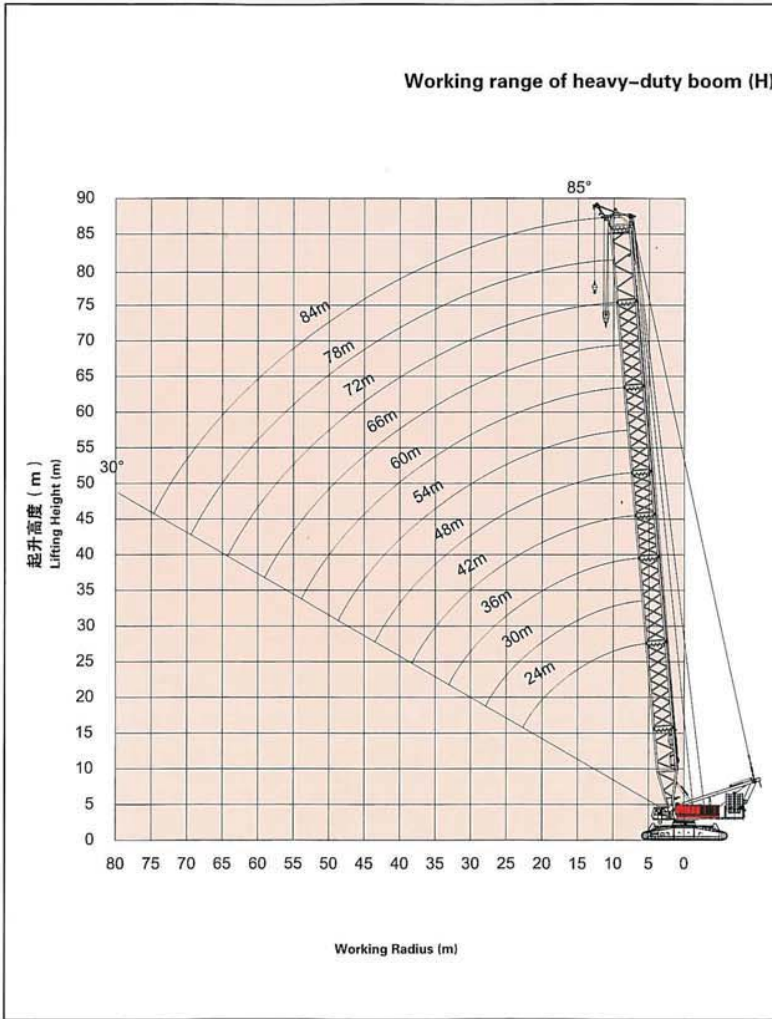
Working radius	Boom length												
	24.0m	30.0m	36.0m	42.0m	48.0m	54.0m	60.0m	66.0m	72.0m	78.0m	84.0m		
6.0m	620.0	6.4m/620.0	6.9m/611.7	7.0									
7.0m	606.6	605.4	603.2	7.4m/561.3	8.0m/509.8								
8.0m	521.1	520.1	517.8	516.4	506.2	8.5m/444.4							
9.0m	456.1	455.1	452.8	447.3	427.9	409.9	9.0m/392.5	9.5m/350.5					
10.0m	405.0	404.1	400.5	384.8	369.6	365.5	342.0	329.5	10.1m/315.2	10.6m/285.6	11.1m/259.8		
12.0m	329.8	320.7	309.0	298.7	288.5	279.1	269.6	261.0	252.3	244.2	236.1		
14.0m	265.9	258.6	249.9	242.5	234.9	227.9	220.7	214.2	207.4	201.2	194.8		
16.0m	217.5	215.6	208.6	202.8	196.8	191.3	185.4	180.2	174.6	169.5	164.1		
18.0m	184.4	182.3	178.1	173.4	168.3	163.7	158.7	154.4	149.5	145.3	140.5		
20.0m	157.7	155.6	153.7	150.7	146.2	142.3	137.8	134.1	129.8	126.0	121.8		
22.0m	137.2	135.1	133.1	132.2	128.5	125.1	121.0	117.7	113.8	110.4	106.6		
24.0m	23.6m/121.1	118.7	116.7	115.7	114.0	111.0	107.2	104.3	100.6	97.5	93.9		
26.0m		105.4	103.3	102.3	100.6	99.3	95.7	93.0	89.5	86.7	83.3		
28.0m		94.2	92.2	91.2	89.5	88.3	85.9	83.4	80.1	77.4	74.2		
30.0m		28.8m/90.2	82.9	81.8	80.1	78.8	76.8	75.2	72.0	69.5	66.3		
34.0m			67.8	66.9	65.0	63.8	61.7	60.5	58.4	56.4	53.4		
38.0m				55.4	53.6	52.3	50.2	49.0	46.8	45.4	43.2		
42.0m					39.2m/52.4	44.6	43.3	41.2	39.9	37.7	36.3	34.1	
46.0m						44.4m/40.0	36.0	33.8	32.6	30.4	28.9	26.7	
50.0m							49.6m/30.5	27.8	26.5	24.3	22.8	20.6	
54.0m								22.7	21.4	19.2	17.7	15.5	
58.0m									54.8m/21.7	17.1	14.9	13.4	11.1
62.0m										60.0m/15.1	11.1	9.8	7.3
66.0m											65.2m/8.4	6.3	4.1
70.0m												3.5	1.2

Rated Lifting Capacity Chart ( H )



Working radius	Boom length													
	24.0m	30.0m	36.0m	42.0m	48.0m	54.0m	60.0m	66.0m	72.0m	78.0m	84.0m			
6.0m	650.0	6.4m/650.0	6.9m/636.8											
7.0m	631.4	630.2	628.0	7.4m/564.5	8.0m/538.8									
8.0m	542.6	541.5	539.3	537.9	535.9	8.5m/499.5								
9.0m	475.0	474.0	471.7	470.4	468.3	466.8	9.0m/464.2	9.5m/423.6						
10.0m	421.9	420.9	418.6	417.2	415.2	413.7	411.5	398.7	10.1m/381.9	10.6m/346.8	11.1m/310.5			
12.0m	343.7	342.8	340.5	339.1	337.0	335.5	327.3	317.3	307.1	297.7	288.3			
14.0m	288.8	288.0	285.7	284.3	282.2	277.4	269.1	261.6	253.8	246.6	239.2			
16.0m	248.3	247.5	245.1	243.8	240.2	233.8	227.1	221.1	214.7	209.0	202.9			
18.0m	217.0	216.3	213.9	212.1	206.2	201.0	195.3	190.4	184.9	180.1	174.9			
20.0m	191.3	190.4	188.5	185.0	179.9	175.5	170.5	166.3	161.5	157.3	152.6			
22.0m	166.8	165.9	163.9	163.0	168.9	155.0	150.5	146.8	142.5	138.8	134.5			
24.0m	23.0m/149.3	146.4	144.4	143.4	141.7	138.2	134.1	130.8	126.9	123.4	119.5			
26.0m		130.4	128.4	127.4	125.7	124.3	120.4	117.4	113.6	110.5	106.8			
28.0m		117.2	115.2	114.2	112.4	111.2	108.8	106.0	102.4	99.5	96.0			
30.0m		28.8m/112.4	104.0	103.0	101.2	100.0	97.9	96.2	92.8	90.1	86.7			
34.0m			86.1	85.2	83.3	82.1	80.0	78.8	76.7	74.5	71.4			
38.0m				34.0m/86.1	71.5	69.7	68.4	66.3	65.1	62.9	61.5	59.3		
42.0m					39.2m/68.0	58.9	57.7	55.5	54.3	52.1	50.7	48.5		
46.0m						44.4m/53.5	49.0	46.8	45.6	43.4	41.9	39.7		
50.0m							49.6m/42.4	39.6	38.4	36.1	34.7	32.4		
54.0m								33.6	32.3	30.1	28.6	26.4		
58.0m									64.8m/32.5	27.2	24.9	23.5	21.2	
62.0m										60.0m/24.8	20.5	19.0	16.7	
66.0m											65.2m/17.3	15.1	12.8	
70.0m												11.7	9.4	
74.0m													70.4m/11.4	6.4
78.0m														75.6m/5.2



**Working Range ( H )**
**Working range of heavy-duty boom ( H )**

**Rated Lifting Capacity Chart ( HS )**


Boom length \ Working radius	36.0m	42.0m	48.0m	54.0m	60.0m	66.0m	72.0m	78.0m	84.0m	90.0m	96.0m		
7.0m	594.0												
8.0m	555.1	541.0	495.2										
9.0m	485.7	484.3	482.2	456.3									
10.0m	431.1	429.7	427.6	426.1	421.7	390.3	351.6	319.1					
12.0m	350.7	349.3	347.2	345.7	343.5	337.3	326.7	316.8	290.8	266.4	244.6		
14.0m	294.4	293.0	290.9	289.4	286.4	278.5	270.3	262.8	255.1	247.9	240.6		
16.0m	252.7	251.3	249.2	247.7	241.9	235.7	229.1	223.0	216.7	210.8	204.8		
18.0m	220.6	219.3	217.2	214.3	208.4	203.3	197.6	192.5	187.1	182.1	176.9		
20.0m	195.2	193.8	191.7	187.3	182.1	177.7	172.8	168.4	163.6	159.3	154.6		
22.0m	174.5	173.1	169.7	165.7	161.0	157.2	152.7	148.8	144.5	140.6	136.4		
24.0m	154.3	153.3	151.6	147.9	143.7	140.3	136.1	132.7	128.6	125.1	121.2		
26.0m	137.4	136.4	134.7	133.2	129.2	126.1	122.2	119.0	115.3	112.0	108.3		
28.0m	123.4	122.4	120.6	119.4	116.9	114.0	110.4	107.4	103.8	100.8	97.3		
30.0m	111.6	110.6	108.8	107.5	105.5	103.7	100.2	97.4	94.0	91.1	87.8		
34.0m	92.7	91.7	89.9	88.6	86.5	85.3	83.2	81.0	77.8	75.2	72.0		
38.0m	92.6	77.3	75.5	74.2	72.1	70.8	68.7	67.3	65.1	62.6	59.6		
42.0m		73.5	64.1	62.8	60.7	59.4	57.2	55.8	53.6	52.0	49.6		
46.0m			58.3	53.6	51.5	50.2	48.0	46.6	44.3	42.7	40.5		
50.0m				46.7	43.8	42.6	40.4	38.9	36.7	35.1	32.8		
54.0m					37.5	36.2	34.0	32.5	30.3	28.7	26.4		
58.0m						36.3	30.8	28.5	27.1	24.8	23.2	20.9	
62.0m							28.3	23.8	22.4	20.1	18.5	16.2	
66.0m								20.6	18.3	16.0	14.4	12.1	
70.0m									14.6	12.4	10.7	8.4	
74.0m										14.3	9.1	7.5	5.2
78.0m											8.0	4.7	
82.0m												2.8	
86.0m													





Rated Lifting Capacity Chart ( HS )



Working radius	Boom length												
	36.0m	42.0m	48.0m	54.0m	60.0m	66.0m	72.0m	78.0m	84.0m	90.0m	96.0m		
7.0m	596.4												
8.0m	557.4	543.2	497.3										
9.0m	487.7	486.3	484.2	458.3									
10.0m	432.9	431.5	429.4	427.9	423.5	392.2	353.3	320.6					
12.0m	352.2	350.8	348.7	347.2	345.0	339.0	328.3	318.3	292.2	267.7	245.8		
14.0m	295.6	294.3	292.1	290.7	287.8	279.9	271.7	264.1	256.4	249.2	241.9		
16.0m	253.8	252.4	250.3	248.8	243.2	236.9	230.2	224.2	217.8	212.0	205.9		
18.0m	221.6	220.2	218.1	215.4	209.4	204.3	198.6	193.6	188.1	183.1	177.9		
20.0m	196.1	194.7	192.6	188.3	183.1	178.7	173.7	169.3	164.5	160.2	155.5		
22.0m	175.3	173.9	170.6	166.5	161.9	158.0	153.5	149.7	145.3	141.4	137.2		
24.0m	155.1	154.1	152.4	148.7	144.5	141.0	136.9	133.4	129.4	125.9	121.9		
26.0m	138.1	137.1	135.4	133.9	129.9	126.8	122.9	119.7	115.9	112.7	109.0		
28.0m	124.1	123.1	121.3	120.1	117.6	114.7	111.0	108.1	104.5	101.5	97.9		
30.0m	112.2	111.2	109.4	108.2	106.1	104.3	100.8	98.0	94.6	91.7	88.3		
34.0m	93.2	92.2	90.4	89.2	87.1	85.9	83.7	81.5	78.3	75.7	72.6		
38.0m	93.1	77.7	75.9	74.7	72.5	71.3	69.1	67.7	65.5	63.1	60.1		
42.0m		74.0	64.5	63.2	61.1	59.9	57.7	56.2	54.0	52.5	50.0		
46.0m			58.7	54.0	51.9	50.6	48.4	46.9	44.7	43.1	40.9		
50.0m				47.1	44.2	43.0	40.7	39.3	37.0	35.4	33.2		
54.0m					37.8	36.5	34.3	32.8	30.6	29.0	26.7		
58.0m						36.6	31.1	28.8	27.4	25.1	23.5	21.2	
62.0m							28.6	24.1	22.6	20.3	18.7	16.4	
66.0m								20.7	18.5	16.2	14.6	12.3	
70.0m									14.8	12.6	11.0	8.7	
74.0m										14.5	9.4	7.8	5.5
78.0m											8.2	4.9	
82.0m												3.0	
86.0m													

RUMAH KUNCI ALUMINIUM KAYEN WAKU

Rated Lifting Capacity Chart ( HS )

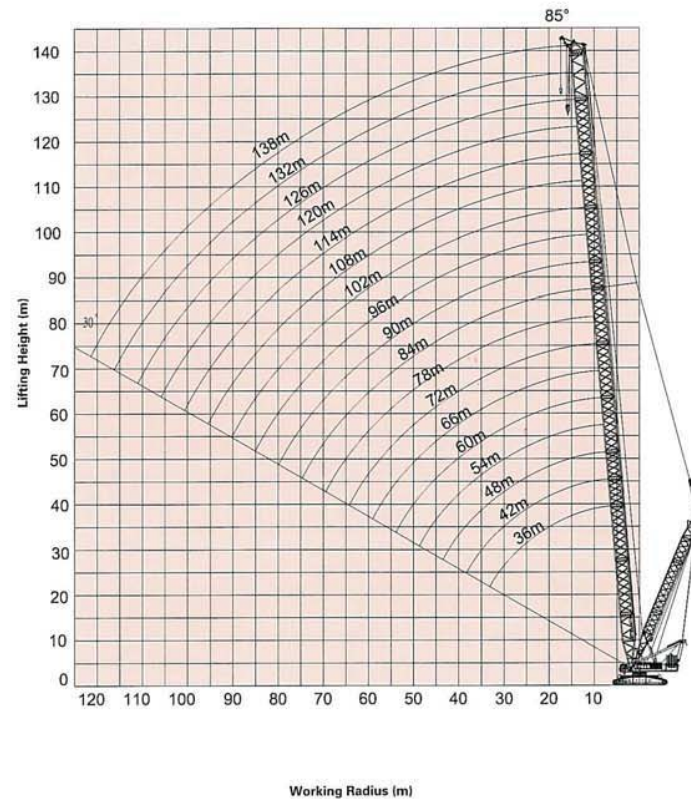


Working radius	Boom length												
	36.0m	42.0m	48.0m	54.0m	60.0m	66.0m	72.0m	78.0m	84.0m	90.0m	96.0m		
7.0m	600.1												
8.0m	560.8	546.6	500.4										
9.0m	490.7	489.3	487.2	461.1									
10.0m	435.5	434.2	432.1	430.6	426.1	395.0	355.9	323.0					
12.0m	354.4	353.0	350.9	349.4	347.2	341.4	330.7	320.7	294.4	269.8	247.7		
14.0m	297.5	296.1	294.0	292.5	289.9	282.0	273.7	266.1	258.3	251.1	243.7		
16.0m	255.5	254.1	252.0	250.5	245.0	238.7	232.0	225.9	219.5	213.6	207.5		
18.0m	223.1	221.7	219.6	217.0	211.1	205.9	200.2	195.1	189.6	184.6	179.3		
20.0m	197.4	196.0	193.9	189.7	184.5	180.1	175.1	170.7	165.8	161.5	156.8		
22.0m	176.5	175.1	172.0	167.9	163.2	159.3	154.8	150.9	146.5	142.6	138.4		
24.0m	156.3	155.3	153.6	149.9	145.7	142.2	138.0	134.6	130.5	127.0	123.0		
26.0m	139.2	138.2	136.5	135.0	131.0	127.9	124.0	120.8	117.0	113.7	110.0		
28.0m	125.1	124.1	122.3	121.1	118.6	115.7	112.0	109.0	105.4	102.4	98.9		
30.0m	113.1	112.1	110.3	109.1	107.0	105.2	101.7	98.9	95.5	92.6	89.2		
34.0m	94.0	93.0	91.2	90.0	87.9	86.7	84.5	82.3	79.1	76.5	73.3		
38.0m	93.9	78.5	76.6	75.4	73.2	72.0	69.9	68.4	66.3	63.8	60.8		
42.0m		74.7	65.1	63.9	61.7	60.5	58.3	56.9	54.7	53.1	50.7		
46.0m			59.3	54.6	52.4	51.2	49.0	47.5	45.3	43.7	41.5		
50.0m				47.6	44.7	43.5	41.3	39.8	37.5	36.0	33.7		
54.0m					38.3	37.0	34.8	33.3	31.1	29.5	27.2		
58.0m						37.1	31.5	29.3	27.8	25.5	23.9	21.6	
62.0m							29.0	24.5	23.0	20.8	19.1	16.9	
66.0m								21.1	18.9	16.6	15.0	12.7	
70.0m									15.2	13.0	11.3	9.0	
74.0m										14.9	9.7	8.1	5.8
78.0m											8.5	5.2	
82.0m												3.4	
86.0m													
90.0m													

RUMAH KUNCI ALUMINIUM KAYEN WAKU


**Rated Lifting Capacity Chart ( HS )**


Boom length / Working radius	36.0m	42.0m	48.0m	54.0m	60.0m	66.0m	72.0m	78.0m	84.0m	90.0m	96.0m		
7.0m	602.5												
8.0m	563.1	548.8	502.5										
9.0m	492.7	491.3	489.2	463.0									
10.0m	437.3	436.0	433.9	432.4	427.9	396.9	357.6	324.6					
12.0m	355.9	354.5	352.4	350.9	348.7	343.1	332.3	322.3	295.9	271.1	249.0		
14.0m	298.8	297.4	295.3	293.8	291.3	283.3	275.1	267.4	259.6	252.4	245.0		
16.0m	266.5	255.2	253.1	251.6	246.2	239.9	233.2	227.1	220.7	214.7	208.6		
18.0m	224.0	222.7	220.5	218.1	212.1	207.0	201.2	196.1	190.6	185.6	180.3		
20.0m	198.2	196.9	194.7	190.7	185.5	181.1	176.0	171.6	166.7	162.4	157.7		
22.0m	177.2	175.9	172.8	168.7	164.0	160.2	155.6	151.8	147.3	143.5	139.2		
24.0m	157.1	156.1	154.4	150.7	146.4	143.0	138.8	135.3	131.2	127.7	123.7		
26.0m	140.0	139.0	137.2	135.7	131.7	128.6	124.7	121.5	117.7	114.4	110.7		
28.0m	125.7	124.7	123.0	121.8	119.3	116.4	112.7	109.7	106.1	103.0	99.5		
30.0m	113.7	112.7	110.9	109.7	107.7	105.8	102.3	99.5	96.1	93.2	89.8		
34.0m	94.5	93.6	91.7	90.5	88.4	87.2	85.1	82.9	79.6	77.0	73.9		
38.0m	94.5	78.9	77.1	75.8	73.7	72.5	70.3	68.9	66.7	64.3	61.3		
42.0m		75.1	65.6	64.3	62.2	60.9	58.7	57.3	55.1	53.5	51.1		
46.0m			59.7	55.0	52.8	51.5	49.3	47.9	45.7	44.1	41.9		
50.0m				47.9	45.1	43.8	41.6	40.1	37.9	36.3	34.0		
54.0m					38.6	37.3	35.1	33.6	31.4	29.8	27.5		
58.0m						37.4	31.8	29.6	28.1	25.8	24.2	21.9	
62.0m							29.3	24.8	23.3	21.0	19.4	17.1	
66.0m								21.4	19.2	16.9	15.2	13.0	
70.0m									15.5	13.2	11.6	9.3	
74.0m										15.1	9.9	8.3	6.0
78.0m											8.7	5.4	3.1
82.0m												3.6	0.5
86.0m													-1.9
90.0m													

**Working Range ( HS )**
**Working range of heavy-duty boom+SL mast ( HS )**






Rated Lifting Capacity Chart ( HSD )



Booms length \ Working radius	36.0m	42.0m	48.0m	54.0m	60.0m	66.0m	72.0m	78.0m	84.0m	90.0m	96.0m
7.0m	750.0										
8.0m	750.0	730.3	710.8								
9.0m	715.0	700.3	684.5	659.9							
10.0m	687.0	675.8	657.4	641.5	558.8	490.8	446.4	405.3			
12.0m	650.0	642.6	633.6	577.3	554.2	484.1	445.9	403.5	347.9	313.9	273.3
14.0m	590.0	580.3	560.2	543.2	519.7	479.2	442.5	401.4	346.4	312.1	273.3
16.0m	540.2	538.8	527.4	509.5	485.3	464.2	437.0	399.4	344.8	310.9	273.3
18.0m	475.0	473.6	471.5	470.0	441.2	439.4	411.6	397.3	343.1	309.7	273.3
20.0m	423.3	421.9	419.8	418.3	416.0	414.5	396.1	381.2	340.5	306.9	273.3
22.0m	381.2	379.9	377.8	376.3	374.0	372.5	370.2	355.1	334.8	301.7	273.3
24.0m	346.4	345.0	342.9	341.4	339.1	337.7	335.3	329.0	318.4	296.1	269.3
26.0m	317.0	315.7	313.5	312.1	309.7	308.3	306.0	304.4	300.5	290.1	263.9
28.0m	291.9	290.6	288.5	287.0	284.7	283.2	280.9	279.3	277.0	273.8	258.3
30.0m	270.2	268.9	266.8	265.3	263.0	261.6	259.2	257.7	255.3	253.6	251.3
34.0m	234.5	233.3	231.3	229.8	227.5	226.0	223.7	222.1	219.8	218.1	215.7
38.0m	234.4	205.3	203.3	201.8	199.5	198.1	195.8	194.2	191.8	190.1	187.8
42.0m		198.0	180.7	179.3	177.0	175.6	173.2	171.7	169.3	167.6	165.2
46.0m			169.1	160.7	158.4	157.0	154.7	153.1	150.7	149.0	146.7
50.0m				146.5	142.8	141.4	139.1	137.5	135.2	133.5	131.1
54.0m					129.5	128.2	126.8	124.3	121.9	120.2	117.9
58.0m					127.1	116.7	114.4	112.9	110.5	108.8	106.5
62.0m						111.6	104.5	103.0	100.6	98.9	96.6
66.0m							97.4	94.2	91.9	90.2	87.9
70.0m								86.5	84.2	82.5	80.2
74.0m								85.8	77.3	75.6	73.3
78.0m									74.7	69.5	67.1
82.0m										65.5	61.5
86.0m											56.5

Rated Lifting Capacity Chart ( HSD )



Booms length \ Working radius	36.0m	42.0m	48.0m	54.0m	60.0m	66.0m	72.0m	78.0m	84.0m	90.0m	96.0m		
7.0m	750.0												
8.0m	750.0	730.3	710.8										
9.0m	715.0	700.3	684.5	659.9									
10.0m	687.0	675.8	657.4	641.5	558.8	490.8	446.4	405.3					
12.0m	650.0	642.6	633.6	577.3	554.2	484.1	445.9	403.5	347.9	313.9	273.3		
14.0m	590.0	580.3	560.2	543.2	519.7	479.2	442.5	401.4	346.4	312.1	273.3		
16.0m	552.1	540.5	527.4	509.5	485.3	464.2	437.0	399.4	344.8	310.9	273.3		
18.0m	512.9	511.5	501.6	486.0	441.2	439.4	411.6	397.3	343.1	309.7	273.3		
20.0m	457.2	455.8	453.7	451.1	434.7	414.5	396.1	381.2	340.5	306.9	273.3		
22.0m	412.0	410.6	408.5	407.0	404.7	390.1	370.8	355.1	334.8	301.7	273.3		
24.0m	374.5	373.1	371.0	369.5	367.2	365.8	353.7	329.0	318.4	296.1	269.3		
26.0m	342.9	341.6	339.4	338.0	336.6	334.2	326.6	310.9	300.5	290.1	263.9		
28.0m	315.9	314.6	312.5	311.0	308.7	307.2	304.9	303.3	284.3	273.8	258.3		
30.0m	292.6	291.3	289.2	287.7	285.4	284.0	281.6	280.0	276.6	267.2	252.3		
34.0m	236.3	253.0	250.9	249.5	247.2	245.7	243.4	241.8	239.5	237.8	235.4		
38.0m	236.0	222.9	220.9	219.4	217.1	215.7	213.3	211.8	209.4	207.7	205.4		
42.0m		214.1	196.6	195.2	192.9	191.5	189.1	187.5	185.2	183.5	181.1		
46.0m			184.1	175.2	172.9	171.5	169.1	167.6	165.2	163.5	161.2		
50.0m				159.9	156.1	154.7	152.4	150.8	148.5	146.8	144.4		
54.0m					141.8	140.5	138.1	136.6	134.2	132.5	130.2		
58.0m						139.2	128.2	125.9	124.3	122.0	117.9		
62.0m							122.7	115.2	113.7	111.3	109.6	107.3	
66.0m								107.6	104.3	101.9	100.3	97.9	
70.0m									96.0	93.6	92.0	89.6	
74.0m										95.2	86.2	84.6	82.2
78.0m											83.5	77.9	75.6
82.0m												73.7	69.6
86.0m													64.2





QUY750

Rated Lifting Capacity Chart ( HSD )



Boom length \ Working radius	36.0m	42.0m	48.0m	54.0m	60.0m	66.0m	72.0m	78.0m	84.0m	90.0m	96.0m		
7.0m	750.0												
8.0m	750.0	730.3	710.8										
9.0m	715.0	700.3	684.5	659.9									
10.0m	687.0	675.8	657.4	641.5	558.8	490.8	446.4	405.3					
12.0m	650.0	642.6	633.6	617.3	554.2	484.1	445.9	403.5	347.9	313.9	273.3		
14.0m	590.0	580.3	560.2	543.2	519.7	479.2	442.5	401.4	346.4	312.1	273.3		
16.0m	552.1	540.5	527.4	509.5	485.3	464.2	437.0	399.4	344.8	310.9	273.3		
18.0m	525.5	514.0	501.6	486.0	441.2	439.4	411.6	397.3	343.1	309.7	273.3		
20.0m	474.7	480.7	468.5	451.1	434.7	414.5	396.1	381.2	340.5	306.9	273.3		
22.0m	429.2	456.7	445.4	433.9	411.6	390.1	370.8	355.1	334.8	301.7	273.3		
24.0m	404.6	415.3	413.2	409.8	387.5	376.1	353.7	329.0	318.4	296.1	269.3		
26.0m	358.1	380.4	378.3	376.8	360.4	349.0	326.6	310.9	300.5	290.1	263.9		
28.0m	326.4	350.6	348.5	347.0	336.7	327.3	314.9	303.3	284.3	273.8	258.3		
30.0m	290.1	324.8	322.7	321.3	318.9	309.9	297.5	286.0	276.6	267.2	252.3		
34.0m	224.7	271.3	260.5	279.0	276.7	275.3	272.9	271.0	268.7	243.2	239.9		
38.0m	224.4	218.7	247.2	245.8	243.5	242.1	239.7	238.1	235.8	221.7	226.8		
42.0m		203.5	207.5	219.0	216.7	215.3	212.9	211.4	209.0	203.2	204.9		
46.0m			183.3	195.2	194.6	193.2	190.9	189.3	186.9	185.2	182.9		
50.0m				165.6	176.1	174.7	172.3	170.8	168.4	166.7	164.4		
54.0m					154.0	158.9	156.6	155.1	152.7	151.0	148.6		
58.0m						148.7	145.4	143.1	141.5	138.1	137.5	135.1	
62.0m							134.3	131.2	129.7	127.4	125.7	123.3	
66.0m								120.2	119.4	117.0	115.3	113.0	
70.0m									109.8	107.8	106.2	103.8	
74.0m										108.3	99.7	98.0	95.7
78.0m											96.4	90.7	88.3
82.0m												86.0	81.7
86.0m													75.1
90.0m													

TECMACO HEAVY INDUSTRY CO., LTD.

Rated Lifting Capacity Chart ( HSD )



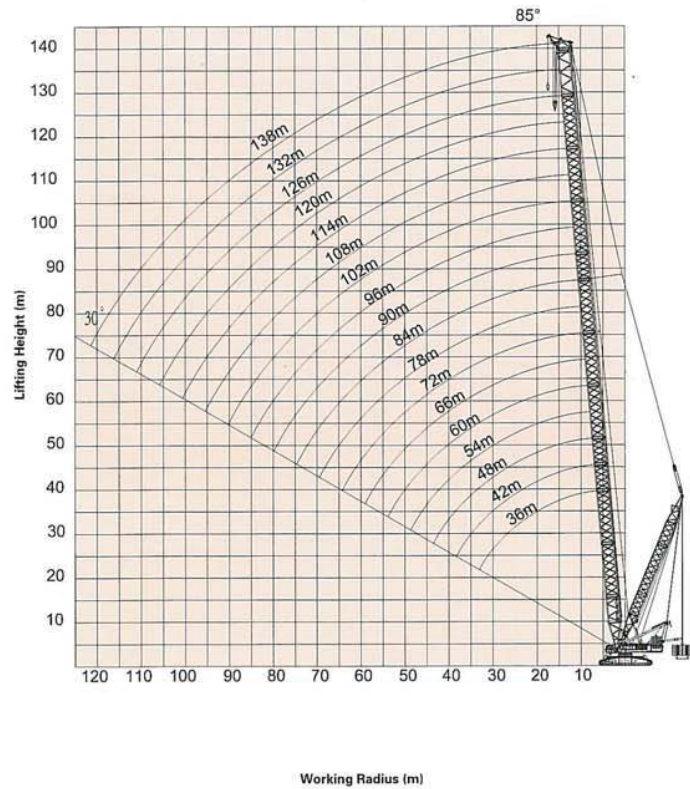
Boom length \ Working radius	36.0m	42.0m	48.0m	54.0m	60.0m	66.0m	72.0m	78.0m	84.0m	90.0m	96.0m		
7.0m	750.0												
8.0m	750.0	730.3	710.8										
9.0m	715.0	700.3	684.5	659.9									
10.0m	687.0	675.8	657.4	641.5	558.8	490.8	446.4	405.3					
12.0m	650.0	642.6	633.6	617.3	554.2	484.1	445.9	403.5	347.9	313.9	273.3		
14.0m	590.0	580.3	560.2	543.2	519.7	479.2	442.5	401.4	346.4	312.1	273.3		
16.0m	552.1	540.5	527.4	509.5	485.3	464.2	437.0	399.4	344.8	310.9	273.3		
18.0m	525.5	514.0	501.6	486.0	441.2	439.4	411.6	397.3	343.1	309.7	273.3		
20.0m	474.7	480.7	468.5	451.1	434.7	414.5	396.1	381.2	340.5	306.9	273.3		
22.0m	429.2	456.7	445.4	433.9	411.6	390.1	370.8	355.1	334.8	301.7	273.3		
24.0m	404.6	415.3	413.2	409.8	387.5	376.1	353.7	329.0	318.4	296.1	269.3		
26.0m	358.1	402.1	404.2	382.7	360.4	349.0	326.6	310.9	300.5	290.1	263.9		
28.0m	317.6	360.7	372.5	351.0	338.7	327.3	314.9	303.3	284.3	273.8	258.3		
30.0m	281.4	324.6	345.1	329.5	321.3	309.9	297.5	286.0	276.6	267.2	252.3		
34.0m	216.2	263.2	282.5	286.2	296.4	295.0	282.6	271.0	258.7	243.2	239.9		
38.0m	215.9	210.8	243.1	252.2	261.1	259.6	257.3	255.7	243.4	221.7	226.8		
42.0m		195.6	200.4	224.0	232.6	231.2	228.8	227.2	224.9	203.2	213.2		
46.0m			176.1	188.8	204.8	207.7	205.3	203.8	201.4	199.7	197.4		
50.0m				159.2	175.5	187.8	185.7	184.1	181.7	180.0	177.7		
54.0m					148.3	163.3	168.9	167.4	165.0	163.3	161.0		
58.0m						142.8	140.3	150.2	153.0	150.6	148.9	146.6	
62.0m							129.1	130.7	138.6	138.1	136.4	134.0	
66.0m								115.5	121.8	126.6	125.4	123.0	
70.0m									105.6	112.1	115.7	113.3	
74.0m										104.0	98.1	103.4	104.6
78.0m											92.5	91.2	94.1
82.0m												82.7	83.4
86.0m													72.3
90.0m													

TECMACO HEAVY INDUSTRY CO., LTD.



Working Range ( HSD )

Working range of heavy-duty boom+SL mast+SL counterweight (HSD)

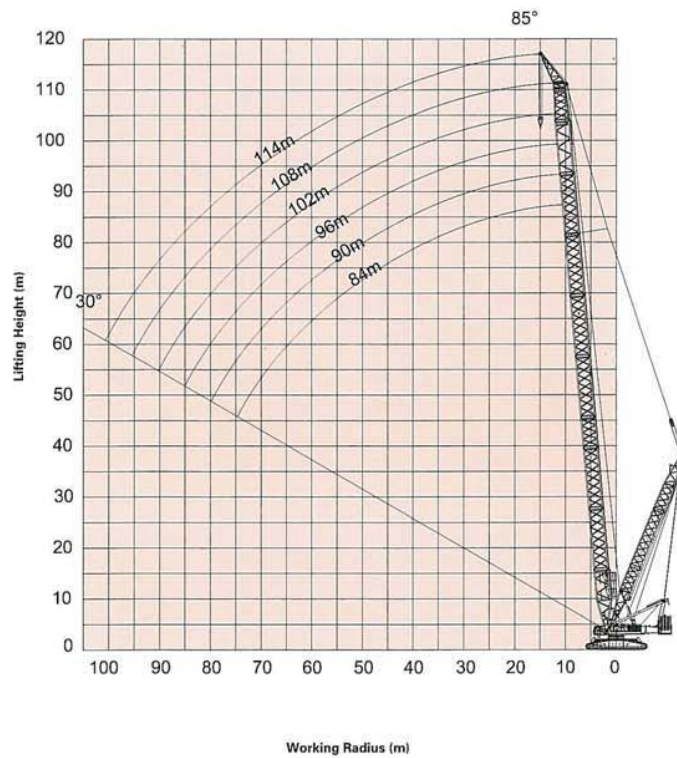


Rated Lifting Capacity Chart ( HWS )



Boom length	84.0m	90.0m	96.0m	102.0m	108.0m	114.0m	Boom length
Working radius							Working radius
12.0m	140.0						12.0m
14.0m	140.0	140.0	140.0	140.0			14.0m
16.0m	140.0	140.0	140.0	140.0	140.0	140.0	16.0m
18.0m	140.0	140.0	140.0	140.0	140.0	140.0	18.0m
20.0m	140.0	140.0	140.0	140.0	140.0	140.0	20.0m
22.0m	140.0	140.0	140.0	140.0	140.0	135.0	22.0m
24.0m	140.0	140.0	140.0	140.0	136.0	131.0	24.0m
26.0m	136.0	135.0	133.2	132.2	131.1	127.6	26.0m
28.0m	132.6	129.3	126.2	123.1	119.3	115.9	28.0m
30.0m	121.6	118.4	115.6	112.6	109.0	105.8	30.0m
34.0m	103.5	100.6	98.1	95.3	92.0	89.0	34.0m
38.0m	89.3	86.6	84.2	81.7	78.5	75.7	38.0m
42.0m	77.1	75.3	73.1	70.6	67.6	64.9	42.0m
46.0m	66.7	65.0	63.7	61.5	58.5	55.9	46.0m
50.0m	58.1	56.4	55.0	53.4	50.9	48.3	50.0m
54.0m	50.9	49.1	47.8	46.1	43.8	41.8	54.0m
58.0m	44.7	43.0	41.6	39.9	37.6	35.6	58.0m
62.0m	39.4	37.6	36.3	34.6	32.3	30.3	62.0m
66.0m	34.8	33.0	31.6	29.9	27.6	25.6	66.0m
70.0m	30.7	28.9	27.6	25.8	23.5	21.5	70.0m
74.0m	27.1	25.3	23.9	22.2	19.9	17.8	74.0m
78.0m	25.2	22.1	20.7	19.0	16.6	14.6	78.0m
82.0m		19.6	17.8	16.1	13.7	11.7	82.0m
86.0m			15.2	13.4	11.1	9.1	86.0m
90.0m			14.8	11.0	8.7	6.7	90.0m
94.0m				10.0	6.5	4.5	94.0m
98.0m					5.0	2.5	98.0m



**Working Range ( HWS )**
**Working range of special boom for wind mill generator+SL mast (HWS)**

**Note for Rated Lifting Capacity Chart**
**Notes**

1. This model conforms to GB3811 as well as ISO4302 and ISO4305.
  2. The rated lifting capacities are the maximums allowable for the crane standing on solid and level ground under ideal work condition
  3. The values in the load charts are in tonne and based on equilibrium load, excluding such factors as shock of sudden stop, poor ground condition, wind load and operation speed, under which condition, the applied load must be reduced for safety concern.
  4. The rated lifting capacities include the weight of hook, wire rope and other slings, which shall be deducted from the listed value to obtain the net load to be lifted.
  5. Hook block weight:
    - 750t hook block.....0.00t
    - 250t hook block.....7.09t
    - 150t hook block.....5.03t
    - 50t hook block.....1.55t
    - 15t hook.....0.98t
  6. A 750t dual pulley block hook can be converted to 400t single pulley block hook.
  7. The counterweights mounted on basic machine weigh 245t, superlift counterweight 400t.
  8. Stability is minimum over sides.
- ※ It should be understood that the listed rated lifting capacities are not finally decided results, which may vary with mechanical improvement.

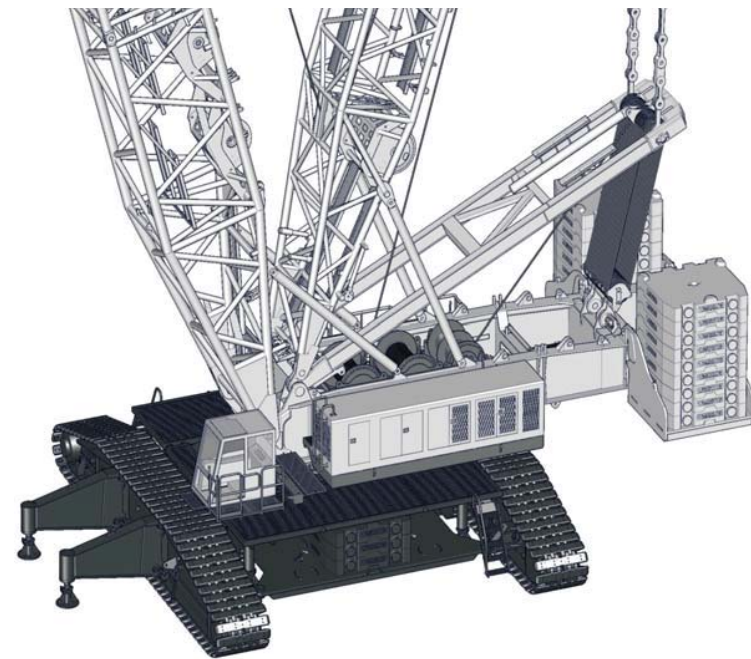
**Abbreviations:**

B=Boom, L=Length, Ld R=Load Radius



QUY750

750 MetricTon Capacity



**CENTRO DE OPERACIONES  
DEMOSTRACIONES-EXPOSICIÓN Y VENTAS**  
Ruta Panamericana Km. 78,100  
(2804) Campana  
Provincia de Buenos Aires  
Tel: ++ 54 (03489) 403040  
Fax: ++ 54 (03489) 403050  
ventas@tecmacointegral.com.ar

**CENTRO DE EXPOSICIÓN Y VENTAS**  
Colectora Este de Panamericana  
esq. Gral. Alvear 2702, (alt. Km 26.600)  
(CP1611) Don Torcuato  
Provincia de Buenos Aires  
Tel: ++ 54 (011) 4011-5050  
Fax: ++ 54 (011) 4011-5055  
tecmaco@tecmacointegral.com.ar