



70 USt



157 ft



155 ft



207 ft

# Ideally prepared for any road

## LTM 1060-3.1

Mobile crane  
Grue mobile

# LIEBHERR

Mobile and crawler cranes



# Technical data

## Caractéristiques technique

---

### Dimensions

Encombrement ..... 3

### Mobile crane

Grue mobile ..... 4-5

### High performance boom with single cylinder system

Une flèche encore plus puissante avec un système à un vérin ..... 6

### Counterweight

Contrepoids ..... 6

### On-road driving

Déplacement sur route ..... 7

### Jobsite driving

Déplacement sur chantier ..... 7

### Crane data

Dates de la grue ..... 8

### Boom/jib combinations

Configurations de flèche ..... 9

T ..... 10-16

TK ..... 17-23

TK ..... 24-27

### Equipment

Équipement ..... 28-29

### Description of symbols

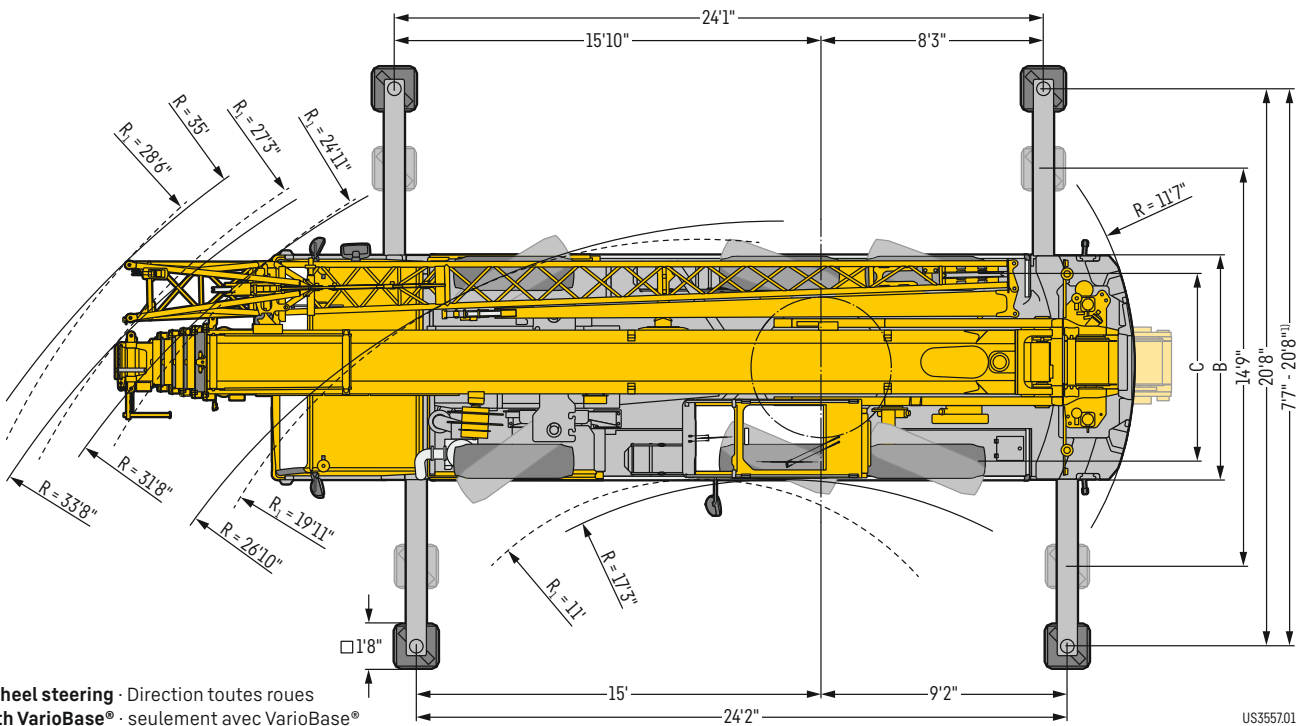
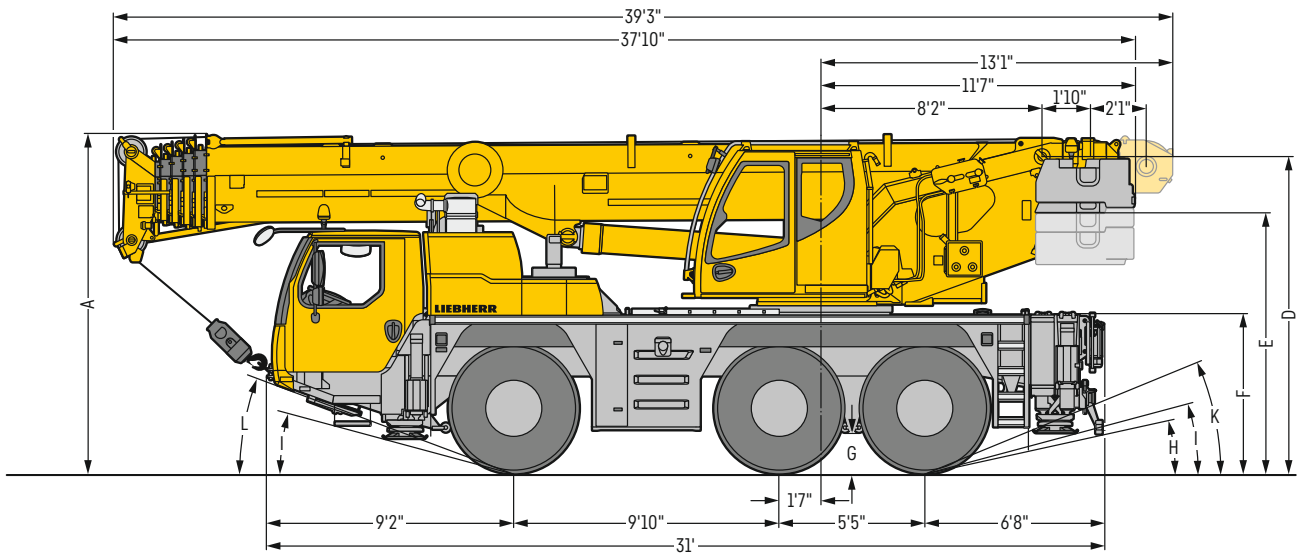
Explication des symboles ..... 30

### Remarks

Remarques ..... 31

# Dimensions


## Encombrement



R<sub>1</sub> = All-wheel steering · Direction toutes roues  
<sup>1)</sup> only with VarioBase® · seulement avec VarioBase®

US355701

## Dimensions · Encombrement

	A	A 4"*	B	C	D	E	F	G	H	I	K	L
445/95 R 25 (16.00 R 25)	12'6"	12'2"	8'4"	6'11"	11'8"	9'7"	5'9"	1'5"	12°	15°	23°	21°
525/80 R 25 (20.5 R 25)	12'6"	12'2"	8'10"	7'1"	11'8"	9'7"	5'9"	1'5"	12°	15°	23°	21°

\* lowered · abaissé

# LTM 1060-3.1

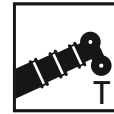
---



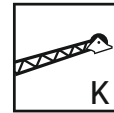


**Hillstart Aid makes starting on gradients easier. Move off safely and easily without rolling backwards.**

La fonction Hillstart-Aid facilite le démarrage en côte. Démarrage sûr et facile sans recul du véhicule.



157 ft



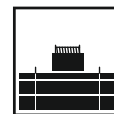
31 ft - 52 ft



8 ft 4 in (445/95 R 25)



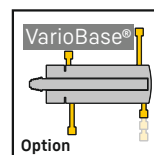
8 ft



28,200 lb

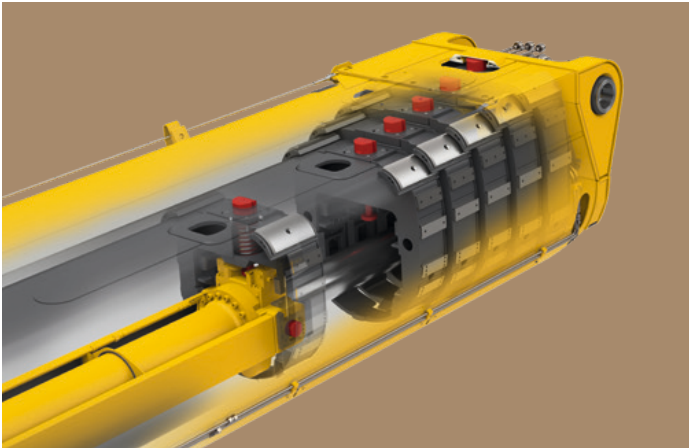


270 kW (367 h.p.)



# High performance boom with single cylinder system

## Une flèche encore plus puissante avec un système à un vérin



- Automatic fast cycle telescoping system TELEMATIK
- High capacities over the complete working range
- Système de télescopage séquentiel rapide automatique TELEMATIK
- Forces de levage élevées sur l'ensemble de la zone de travail

## Counterweight

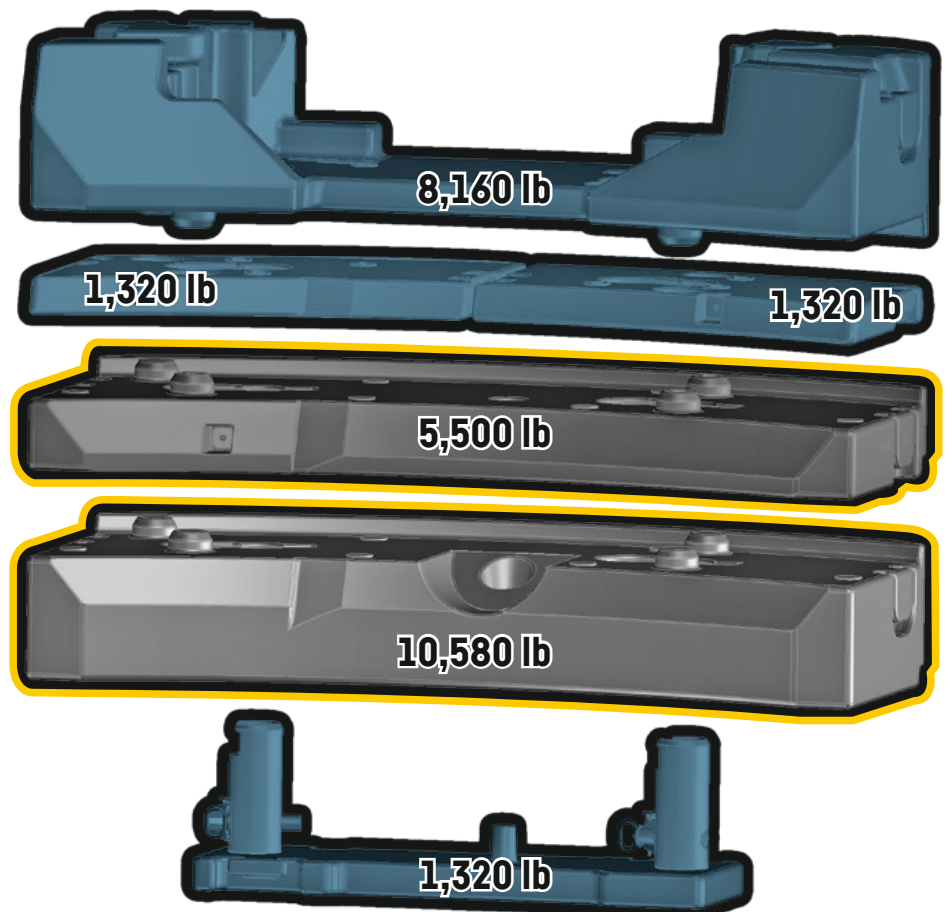
### Contrepoids



26,450 lb axle load  
26,450 lb de charge par essieu

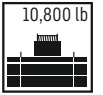
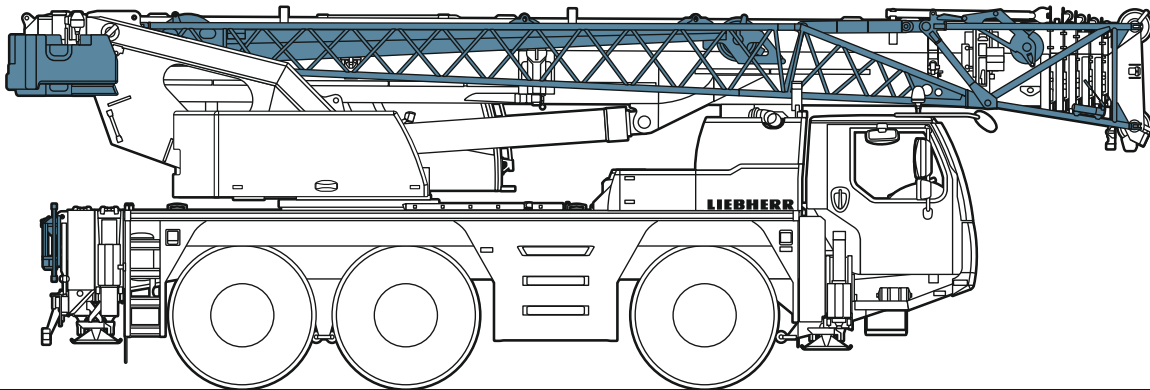
Technically transportable  
Transport techniquement simplifié

Additional counterweight  
Contrepoids additionnel



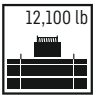
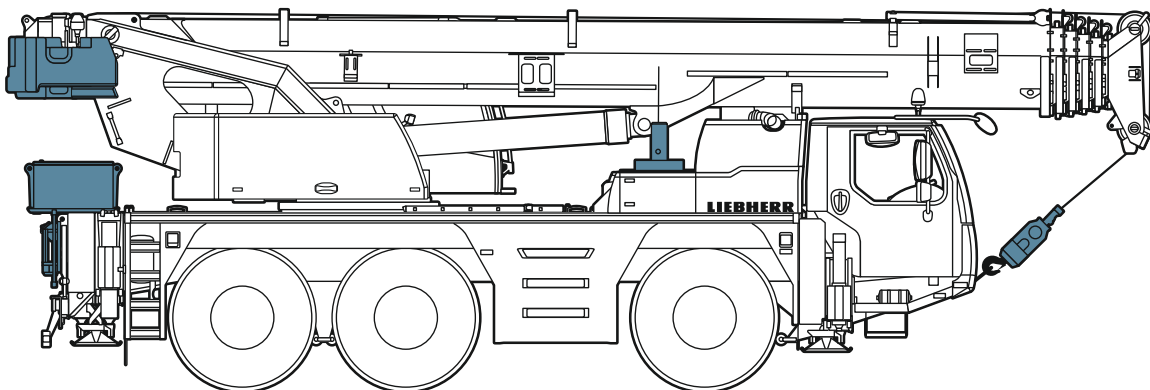
# On-road driving

## Déplacement sur route



≤ 79,400 lb

≤ 26,450 lb    ≤ 26,450 lb    ≤ 26,450 lb

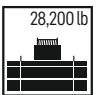
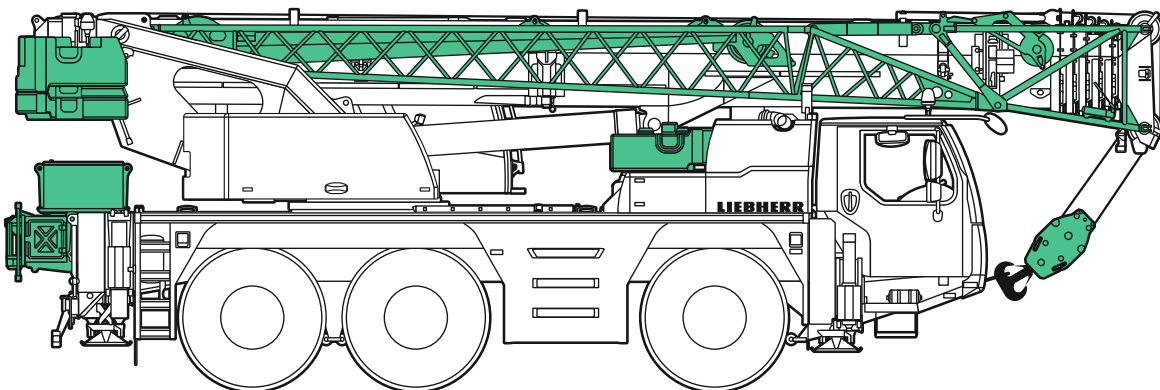


≤ 79,400 lb

≤ 26,450 lb    ≤ 26,450 lb    ≤ 26,450 lb

# Jobsite driving

## Déplacement sur chantier



≤ 101,500 lb





≤ 34,200 lb    ≤ 34,200 lb    ≤ 34,200 lb

US3547









# Crane data

## Dates de la grue

### Hook block · Moufles à crochet




			
132,270 lb	7	15	880 lb
101,630 lb	5	11	880 lb
66,580 lb	3	7	620 lb
29,300 lb	1	3	440 lb
9,920 lb	-	1	220 lb

### Crane carrier · Châssis porteur










	 mph min.	 mph max.	 %		
445/95 R 25 (16.00 R 25)	0.4	53	> 60%		12 / R2
525/80 R 25 (20.5 R 25)	0.4	53	> 60%		4 / R2

Theoretical gradeability · aptitude théorique en pente

### Max. supporting forces · Forces d'appui max.

		
F <sub>max</sub>	62,900 lb	100,000 lb

### Crane superstructure · Partie tournante

			
 0 - 427 ft/min single line · au brin simple	15 mm	722 ft	10,100 lb
 0 - 427 ft/min single line · au brin simple	15 mm	722 ft	10,100 lb
 0 - 1,5 rpm			
 approx. 60 seconds to reach 82° boom angle env. 60 s jusqu'à 82°			
 approx. 405 seconds for boom extension from 34 ft - 157 ft env. 405 s pour passer de 34 ft - 157 ft			



# Boom/jib combinations

## Configurations de flèche

- T**      **Telescopic boom** · Flèche télescopique
- K**      **Mechanical swing away jib** · Flechette pliante mecanique
- K**      **Assembly jib** · Fléchette de montage

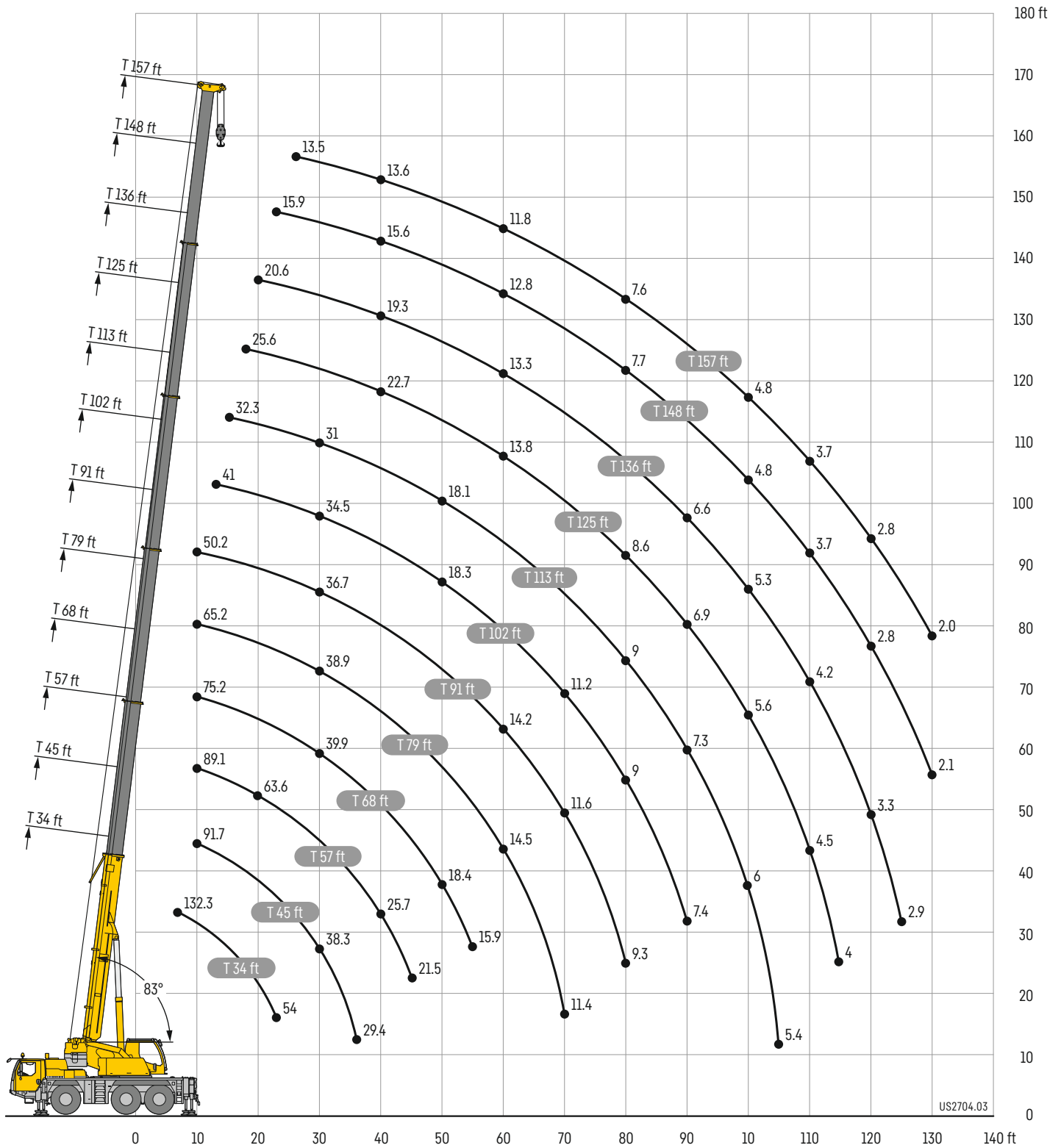


S3145.01

# Lifting heights

## Hauteurs de levage

T



# Lifting capacities

## Forces de levage

T



	34 ft	45 ft	57 ft	68 ft	79 ft	91 ft	102 ft	113 ft	125 ft	136 ft	148 ft	157 ft			
7	132.3												7		
8	129.1												8		
9	124.3												9		
10	119.6	93.3	91.7	89.1	75.2	65.2	50.2						10		
11	113.5	93.3	92.7	89.7	75.7	65.8	50.8						11		
12	106.1	93.3	91.8	89.8	76.1	66.5	51.4						12		
13	99	89.8	89.2	84.6	76.6	66.7	52	41					13		
14	92.5	85.3	84.6	79.7	75.4	66.3	52.5	41.4					14		
15	86.5	80.9	80.3	76.2	72.3	65.9	53	41.7	32.3				15		
16	81.6	76.9	76.8	73.7	69.1	65.4	53.1	42	32.6				16		
17	78.3	73.2	74	70.8	67.4	64.1	53	42.1	32.8				17		
18	75	69.4	70.3	69.3	65.3	61.9	52.8	42.2	33	25.6			18		
19	71.8	65.7	66.7	66.8	63.5	60	52.5	42.3	33.1	25.8			19		
20	68.6	62.2	63.2	63.6	61.6	58.2	52.2	42.2	33.1	26	20.6		20		
22	62.1	56.1	57	57.5	57.2	54.6	51.6	41.6	33.4	26.3	20.8	15.9	22		
24	54	50.4	51.5	51.9	51.7	51.1	48.3	40.6	33.3	26.5	21	16	24		
26			46.7	47.1	47.3	46.7	43.9	39.3	32.8	26.7	21.2	16.2	13.5	26	
28			42.2	42.8	43.7	42.5	40	37.6	32	26.6	21.3	16.4	13.6	28	
30			38.3	39.6	39.9	38.9	36.7	34.5	31	26.2	21.4	16.4	13.7	30	
32			34.8	36.2	36.4	35.8	33.8	32	29.9	25.7	21.1	16.4	13.8	32	
34			32.1	33	33.2	32.9	31.2	30.1	28.5	25	20.8	16.3	13.8	34	
36			29.4	30.2	30.4	30.1	29.1	27.9	26.8	24.3	20.4	16.1	13.8	36	
38				27.8	28	27.7	27	26.2	25.5	23.5	19.9	15.8	13.8	38	
40				25.7	25.9	25.6	25.2	25.2	24.1	22.7	19.3	15.6	13.6	40	
45				21.5	21.6	21.3	22	21.4	21	19.8	18.2	15	13.2	45	
50					18.4	19.1	18.7	18.3	18.1	17.4	17	14.3	12.8	50	
55					15.9	16.5	16.2	15.8	16	15.8	14.8	13.6	12.3	55	
60						14.5	14.2	14.4	14	13.8	13.3	12.8	11.8	60	
65						12.8	12.6	12.7	12.3	12.3	12.1	11.3	11	65	
70						11.4	11.6	11.2	11.3	10.9	10.7	9.9	9.7	70	
75							10.4	10	10.1	9.7	9.3	8.7	8.6	75	
80							9.3	9	9	8.6	8.3	7.7	7.6	80	
85								8.2	8.1	7.7	7.4	6.8	6.8	85	
90								7.4	7.3	6.9	6.6	6.1	6	90	
95									6.6	6.2	5.9	5.4	5.3	95	
100									6	5.6	5.3	4.8	4.8	100	
105									5.4	5	4.7	4.2	4.2	105	
110										4.5	4.2	3.7	3.7	110	
115										4	3.7	3.2	3.2	115	
120											3.3	2.8	2.8	120	
125												2.9	2.4	125	
130													2.1	2	130

\* 0° = over rear · sur arrière

t\_250\_00101\_00\_000 / t\_250\_00501\_00\_000

# Lifting capacities

## Forces de levage

T



	34 ft	45 ft	57 ft	68 ft	79 ft	91 ft	102 ft	113 ft	125 ft	136 ft	148 ft	157 ft	
10	93.3	91.7	89.1	75.2	65.2	50.2							10
11	93.3	92.7	89.7	75.7	65.8	50.8							11
12	93.3	93.2	89.8	76.1	66.5	51.4							12
13	93.3	92.5	84.6	76.6	66.7	52	41						13
14	92.3	87.4	79.7	75.4	66.3	52.5	41.4						14
15	86.5	82.6	76.2	72.3	65.9	53	41.7	32.3					15
16	81.6	79	73.7	69.1	65.4	53.1	42	32.6					16
17	78.3	76.3	70.8	67.4	64.1	53	42.1	32.8					17
18	75	73.5	69.7	65.3	61.9	52.8	42.2	33	25.6				18
19	71.8	70.9	67.7	63.5	60	52.5	42.3	33.1	25.8				19
20	68.5	68.5	65.9	61.6	58.2	52.2	42.2	33.1	26	20.6			20
22	62.1	63.3	61.8	58.4	54.6	51.6	41.6	33.4	26.3	20.8	15.9		22
24	54	56.2	55.8	52.6	51.1	48.3	40.6	33.3	26.5	21	16		24
26		49	49.6	47.4	46.7	43.9	39.3	32.8	26.7	21.2	16.2	13.5	26
28		43.3	43.9	44.5	42.5	40	37.6	32	26.6	21.3	16.4	13.6	28
30		38.6	39.9	40.4	38.9	36.7	34.5	31	26.2	21.4	16.4	13.7	30
32		34.8	36.3	36.5	35.8	33.8	32	29.9	25.7	21.1	16.4	13.8	32
34		32.1	33	33.2	32.9	31.2	30.1	28.5	25	20.8	16.3	13.8	34
36		29.4	30.2	30.4	30.1	29.1	27.9	26.8	24.3	20.4	16.1	13.8	36
38			27.8	28	27.7	27	26.2	25.5	23.5	19.9	15.8	13.8	38
40			25.7	25.9	25.6	25.2	25.2	24.1	22.7	19.3	15.6	13.6	40
45			21.5	21.6	21.3	22	21.4	21	19.8	18.2	15	13.2	45
50				18.4	19.1	18.7	18.3	18.1	17.4	17.1	14.3	12.8	50
55				15.9	16.5	16.2	15.8	16	15.9	15	13.6	12.3	55
60					14.5	14.2	14.4	14	13.8	13.4	12.9	11.8	60
65					12.8	12.6	12.7	12.4	12.3	12.2	11.5	11.1	65
70					11.5	11.7	11.3	11.4	11	10.8	10.1	9.9	70
75						10.5	10.2	10.2	9.8	9.5	8.9	8.8	75
80						9.5	9.1	9.1	8.8	8.5	7.9	7.8	80
85							8.4	8.3	7.9	7.6	7	7	85
90							7.6	7.5	7.1	6.8	6.3	6.2	90
95								6.8	6.4	6.1	5.6	5.5	95
100								6.1	5.7	5.5	5	5	100
105								5.6	5.1	4.9	4.4	4.4	105
110									4.6	4.4	3.9	3.9	110
115									4.2	3.9	3.4	3.4	115
120										3.5	3	3	120
125										3.1	2.6	2.6	125
130											2.2	2.2	130
135											1.9	1.9	135

t\_250\_00201\_00\_000

# Lifting capacities

## Forces de levage

T



	34 ft	45 ft	57 ft	68 ft	79 ft	91 ft	102 ft	113 ft	125 ft	136 ft	148 ft	157 ft	
10	93.3	91.7	89.1	75.2	65.2	50.2							10
11	93.3	92.7	89.7	75.7	65.8	50.8							11
12	92.9	91.3	89.8	76.1	66.5	51.4							12
13	88.6	87.9	84.6	76.6	66.7	52	41						13
14	83.8	83.1	79.7	75.4	66.3	52.5	41.4						14
15	79.1	78.8	76.2	72.3	65.9	53	41.7	32.3					15
16	74	75.1	73.3	69.1	65	53.1	42	32.6					16
17	69.6	70.5	69.5	66.8	62.1	53	42.1	32.8					17
18	65.4	66.5	66.6	62.5	58.6	52.8	42.2	33	25.6				18
19	61.3	62.5	62.2	58.3	55.9	51.1	42.3	33.1	25.8				19
20	57.6	58.8	58.1	54.1	52.6	48.9	42.2	33.1	26	20.6			20
22	50.6	51.9	50.8	49.4	46.5	43.4	40.2	33.4	26.3	20.8	15.9		22
24	44.1	45.5	45.8	44.2	41.6	38.8	36.9	33.3	26.5	21	16		24
26		39.6	41.3	39.8	37.6	35.4	33.5	31.4	26.7	21.2	16.2	13.5	26
28		35.5	36.5	36.1	34.2	32.2	30.9	29.7	26.6	21.3	16.4	13.6	28
30		31.6	32.6	32.7	31.1	29.4	28.8	27.5	25.6	21.4	16.4	13.7	30
32		28.4	29.3	29.5	28.4	27.6	26.5	25.3	23.7	21.1	16.4	13.8	32
34		25.7	26.6	26.8	26.1	26	24.6	23.3	21.8	20.8	16.3	13.8	34
36		23.4	24.2	24.4	24.2	24.2	22.7	21.8	21	19.8	16.1	13.8	36
38			22.2	22.4	23	22.4	21.1	20.7	19.8	18.5	15.8	13.8	38
40			20.3	20.5	21.3	20.8	19.6	19.3	18.5	17.2	15.6	13.6	40
45			16.7	17.6	17.6	17.2	17.5	16.5	15.9	15.2	14.3	13.2	45
50				14.8	14.8	15.1	14.8	14.6	13.8	13.2	12.2	11.9	50
55				12.7	12.6	12.9	12.7	12.6	12	11.4	10.5	10.2	55
60					10.9	11.2	11	10.9	10.5	9.9	9	8.8	60
65					9.5	9.8	9.5	9.4	8.9	8.5	7.8	7.6	65
70					8.4	8.6	8.4	8.2	7.7	7.4	6.8	6.5	70
75						7.6	7.4	7.3	6.8	6.4	5.8	5.7	75
80						6.8	6.5	6.4	5.9	5.6	5.1	4.9	80
85							5.7	5.6	5.2	4.9	4.4	4.2	85
90							5.1	5	4.6	4.3	3.8	3.6	90
95								4.4	4	3.7	3.2	3.1	95
100								3.8	3.4	3.2	2.7	2.6	100
105								3.4	3	2.7	2.2	2.2	105
110									2.6	2.3	1.8	1.8	110
115									2.2	1.9			115

t\_250\_00507\_01\_000



	34 ft	45 ft	57 ft	68 ft	79 ft	91 ft	102 ft	113 ft	125 ft	136 ft	148 ft	157 ft	
10	93.3	91.7	89.1	75.2	65.2	50.2							10
11	93.3	92.7	89.7	75.7	65.8	50.8							11
12	93.3	93.2	89.8	76.1	66.5	51.4							12
13	93.3	92.5	84.6	76.6	66.7	52	41						13
14	91.4	87.4	79.7	75.4	66.3	52.5	41.4						14
15	86.2	82.6	76.2	72.3	65.9	53	41.7	32.3					15
16	81.4	79	73.3	69.1	65	53.1	42	32.6					16
17	76.9	76.1	70.3	66.8	62.1	53	42.1	32.8					17
18	72.1	71.4	67.4	62.5	58.6	52.8	42.2	33	25.6				18
19	67.5	66.3	62.3	58.3	55.9	51.1	42.3	33.1	25.8				19
20	62.2	61.5	58.1	54.1	52.6	48.9	42.2	33.1	26	20.6			20
22	51.7	53.4	50.8	49.4	46.5	43.4	40.2	33.4	26.3	20.8	15.9		22
24	44.1	45.6	45.8	44.2	41.6	38.8	36.9	33.3	26.5	21	16		24
26		39.6	41.3	39.8	37.6	35.4	33.5	31.4	26.7	21.2	16.2	13.5	26
28		35.5	36.5	36.1	34.2	32.2	30.9	29.7	26.6	21.3	16.4	13.6	28
30		31.6	32.6	32.7	31.2	29.5	29	27.7	25.7	21.4	16.4	13.7	30
32		28.4	29.3	29.5	28.6	27.6	26.7	25.6	24.1	21.1	16.4	13.8	32
34		25.7	26.6	26.8	26.4	26.3	24.9	23.7	22.3	20.8	16.3	13.8	34
36		23.4	24.3	24.4	24.2	24.5	23.1	22	21.2	20.1	16.1	13.8	36
38			22.2	22.4	23	22.8	21.6	21	20.3	19	15.8	13.8	38
40			20.5	20.7	21.5	21.1	20.1	19.7	19	17.8	15.6	13.6	40
45			17	17.9	17.8	17.5	17.7	17	16.4	15.7	14.9	13.2	45
50				15.2	15.2	15.4	15.1	14.9	14.4	13.8	12.8	12.4	50
55				13.1	13	13.3	13	13	12.6	12	11.1	10.7	55
60					11.3	11.6	11.4	11.3	10.9	10.4	9.6	9.3	60
65					9.9	10.2	9.9	9.9	9.4	9	8.4	8.1	65
70					8.8	9	8.8	8.7	8.2	7.9	7.3	7.1	70
75						8	7.8	7.7	7.2	6.9	6.3	6.2	75
80						7.2	6.9	6.8	6.4	6.1	5.5	5.4	80
85							6.1	6	5.7	5.4	4.8	4.7	85
90							5.5	5.4	5	4.7	4.2	4.1	90
95								4.8	4.4	4.1	3.6	3.5	95
100								4.2	3.8	3.6	3.1	3.1	100
105								3.8	3.4	3.1	2.6	2.6	105
110									2.9	2.7	2.2	2.2	110
115									2.6	2.3	1.8	1.8	115
120										1.9			120

t\_250\_00207\_01\_000

# Lifting capacities

## Forces de levage

T

	34 ft	45 ft	57 ft	68 ft	79 ft	91 ft	102 ft	113 ft	125 ft	136 ft	148 ft	157 ft	
10	93.3	91.7	89.1	75.2	65.2	50.2							10
11	93.3	92.7	89.7	75.7	65.8	50.8							11
12	92.4	91.1	89.8	76.1	66.5	51.4							12
13	88	87.2	84.6	76.6	66.7	52	41						13
14	82.9	81.9	79.4	74.9	66.3	52.5	41.4						14
15	77.4	77.4	74.3	70.2	65.9	53	41.7	32.3					15
16	72.5	73.5	70.1	67.5	61.7	53.1	42	32.6					16
17	67.9	69	66.2	62	58.9	52.5	42.1	32.8					17
18	63.4	64.5	61.9	57.4	55.3	50.8	42.2	33	25.6				18
19	59.3	60.4	57.3	54	51.5	47.8	42.3	33.1	25.8				19
20	55.3	56.4	53.3	51.6	48.3	44.8	41.1	33.1	26	20.6			20
22	47.4	48.9	47.2	45.5	42.7	39.7	37.7	33.4	26.3	20.8	15.9		22
24	40.3	41.8	42.5	40.5	38.1	35.8	33.6	32.2	26.5	21	16		24
26		36.9	38	36.4	34.3	32.1	31.2	29.8	26.5	21.2	16.2	13.5	26
28		32.5	33.5	32.8	30.9	29.9	28.6	27	25.2	21.3	16.4	13.6	28
30		28.8	29.9	29.7	28	27.8	26.1	24.6	23	21.4	16.4	13.7	30
32		25.8	26.8	27	26	25.5	23.9	23.2	22	20.6	16.4	13.8	32
34		23.2	24.1	24.3	24.8	23.4	22	21.6	20.5	19.1	16.3	13.8	34
36		20.9	21.8	22.1	22.9	21.6	21.1	20	19	17.8	16.1	13.8	36
38			19.9	20.9	20.9	20	19.7	18.6	17.9	16.9	15.8	13.8	38
40			18.2	19.2	19.2	18.6	18.4	17.6	16.7	16	14.9	13.6	40
45			14.8	15.8	15.7	16	15.6	15.2	14.2	13.5	12.5	12.2	45
50				13.2	13.2	13.5	13.3	13	12.1	11.5	10.6	10.3	50
55				11.2	11.2	11.5	11.3	11.2	10.5	9.9	9	8.7	55
60					9.6	9.9	9.7	9.5	8.9	8.5	7.7	7.4	60
65					8.4	8.6	8.3	8.2	7.7	7.3	6.6	6.3	65
70						7.5	7.3	7.1	6.6	6.3	5.6	5.4	70
75							6.6	6.4	6.2	5.8	5.4	4.8	75
80							5.8	5.5	5.5	5	4.7	4.1	80
85								4.8	4.7	4.3	4	3.4	85
90								4.2	4.1	3.7	3.4	2.9	90
95									3.6	3.2	2.9	2.4	95
100									3.1	2.7	2.4	1.9	100
105									2.7	2.3	2		105
110									1.9				110

t\_250\_00511\_00\_000

	34 ft	45 ft	57 ft	68 ft	79 ft	91 ft	102 ft	113 ft	125 ft	136 ft	148 ft	157 ft	
10	93.3	91.7	89.1	75.2	65.2	50.2							10
11	93.3	92.7	89.7	75.7	65.8	50.8							11
12	93.3	93.2	89.8	76.1	66.5	51.4							12
13	93.3	92.5	84.6	76.6	66.7	52	41						13
14	90.3	87.4	79.4	74.9	66.3	52.5	41.4						14
15	85.1	81.5	74.3	70.2	65.9	53	41.7	32.3					15
16	80.1	76.6	70.1	67.5	61.7	53.1	42	32.6					16
17	74.6	71.9	66.2	62	58.9	52.5	42.1	32.8					17
18	69.6	66	61.9	57.4	55.3	50.8	42.2	33	25.6				18
19	63.3	60.9	57.3	54	51.5	47.8	42.3	33.1	25.8				19
20	57.1	56.4	53.3	51.6	48.3	44.8	41.1	33.1	26	20.6			20
22	47.4	48.9	47.2	45.5	42.7	39.7	37.7	33.4	26.3	20.8	15.9		22
24	40.3	41.8	42.5	40.5	38.1	35.8	33.6	32.2	26.5	21	16		24
26		36.9	38	36.4	34.3	32.3	31.5	30.1	26.7	21.2	16.2	13.5	26
28		32.5	33.5	33	31.2	29.9	29	27.5	25.7	21.3	16.4	13.6	28
30		28.8	29.9	30	28.4	28.1	26.6	25.2	23.7	21.4	16.4	13.7	30
32		25.9	26.8	27	26.1	26	24.5	23.3	22.3	21.1	16.4	13.8	32
34		23.4	24.3	24.5	25	24	22.6	22.1	21.2	19.8	16.3	13.8	34
36		21.3	22.1	22.3	23.1	22.3	21.1	20.6	19.7	18.4	16.1	13.8	36
38			20.3	21.2	21.2	20.7	20.2	19.3	18.4	17.4	15.8	13.8	38
40			18.6	19.6	19.6	19.2	19.1	18	17.3	16.5	15.6	13.6	40
45			15.4	16.3	16.2	16.5	16.2	15.9	15	14.3	13.3	12.8	45
50				13.7	13.7	14	13.7	13.7	12.9	12.3	11.4	11	50
55				11.8	11.8	12	11.8	11.8	11.2	10.6	9.7	9.4	55
60					10.2	10.4	10.2	10.2	9.6	9.2	8.4	8.1	60
65					8.9	9.1	8.9	8.8	8.3	7.9	7.2	7	65
70						8.1	7.8	7.7	7.2	6.9	6.3	6.1	70
75							7.1	6.9	6.8	6.3	6	5.4	75
80							6.3	6.1	6	5.5	5.2	4.7	80
85								5.3	5.2	4.8	4.6	4	85
90								4.7	4.6	4.2	4	3.4	90
95									4	3.6	3.4	2.9	95
100									3.6	3.1	2.9	2.4	100
105									3.1	2.7	2.4	1.9	105
110									2.7	2.3	2		110
115									2				115

t\_250\_00211\_00\_000

# Lifting capacities

## Forces de levage

T

34 - 157 ft  
360°  
10,800 lb  
85%

	34 ft	45 ft	57 ft	68 ft	79 ft	91 ft	102 ft	113 ft	125 ft	136 ft	148 ft	157 ft	
10	93.3	91.7	89.2	75.2	65.2	50.2							10
11	93.3	92.7	89.7	75.7	65.8	50.9							11
12	92.2	91	89.8	76.1	66.5	51.4							12
13	87.9	87	84.7	76.6	66.7	51.9	41						13
14	82.4	81.6	79.3	73.6	66.2	52.5	41.4						14
15	76.9	76.9	73.1	68.5	64.4	52.9	41.7	32.3					15
16	71.9	72.9	69.9	65.4	61.1	53.1	42	32.6					16
17	67.3	68.3	65.1	60.1	57.8	51.9	42.1	32.8					17
18	62.7	64	60.1	56.2	53.9	49.5	42.1	33	25.6				18
19	58.6	59.2	55.7	53.2	50.1	46.3	42	33.1	25.8				19
20	54.4	54.8	51.7	50.2	46.8	43.6	40.2	33.1	26	20.6			20
22	46	47.5	46.5	44.1	41.5	38.7	36.6	33.4	26.3	20.8	15.9		22
24	39.1	40.6	41.2	39.3	37	34.6	33.1	31.6	26.5	21	16		24
26		35.9	36.8	35.2	33.1	31	30.4	28.8	26	21.2	16.2	13.5	26
28		31.5	32.6	31.6	29.8	29.2	27.6	26	24.3	21.3	16.4	13.6	28
30		28	29	28.6	27.1	26.9	25.1	24	22.8	21.4	16.4	13.7	30
32		24.9	25.9	26.1	25.9	24.6	23	22.6	21.4	19.9	16.4	13.8	32
34		22.3	23.2	23.5	23.9	22.6	21.7	20.8	19.7	18.4	16.3	13.8	34
36		20.1	21	22.1	22	20.8	20.4	19.3	18.5	17.4	15.9	13.8	36
38			19.2	20.2	20.2	19.3	19.1	18.1	17.4	16.4	15.3	13.8	38
40			17.5	18.5	18.6	18.4	17.7	17.1	16.2	15.4	14.2	13.6	40
45			14.3	15.2	15.2	15.5	15	14.6	13.7	13	12	11.6	45
50				12.7	12.7	13	12.8	12.5	11.6	11	10.1	9.8	50
55				10.8	10.7	11	10.8	10.7	10	9.4	8.5	8.3	55
60					9.2	9.4	9.2	9	8.5	8.1	7.3	7	60
65					8	8.2	8	7.8	7.3	6.9	6.2	6	65
70					7	7.2	6.9	6.8	6.3	6	5.2	5	70
75						6.3	6	5.9	5.4	5.1	4.4	4.3	75
80						5.5	5.2	5.1	4.7	4.4	3.7	3.6	80
85							4.5	4.4	4.1	3.8	3.1	3	85
90							4	3.8	3.4	3.2	2.6	2.5	90
95								3.3	2.9	2.7	2.1	2	95
100								2.9	2.4	2.2			100
105								2.5	2	1.8			105

maxt\_250\_00512\_00\_000

34 - 157 ft  
±10°  
10,800 lb  
85%


	34 ft	45 ft	57 ft	68 ft	79 ft	91 ft	102 ft	113 ft	125 ft	136 ft	148 ft	157 ft	
10	93.3	91.7	89.2	75.2	65.2	50.2							10
11	93.3	92.7	89.7	75.7	65.8	50.9							11
12	93.3	93.2	89.8	76.1	66.5	51.4							12
13	93.3	92.5	84.7	76.6	66.7	51.9	41						13
14	90	87.6	79.3	73.6	66.2	52.5	41.4						14
15	84.7	80.4	73.1	68.5	64.4	52.9	41.7	32.3					15
16	79.3	75.5	69.9	65.4	61.1	53.1	42	32.6					16
17	73.8	69.9	65.1	60.1	57.8	51.9	42.1	32.8					17
18	68.5	64.3	60.1	56.2	53.9	49.5	42.1	33	25.6				18
19	61.4	59.2	55.7	53.2	50.1	46.3	42	33.1	25.8				19
20	55.4	54.8	51.7	50.2	46.8	43.6	40.2	33.1	26	20.6			20
22	46	47.5	46.5	44.1	41.5	38.7	36.7	33.4	26.3	20.8	15.9		22
24	39.1	40.6	41.2	39.3	37	34.7	33.3	31.6	26.5	21	16		24
26		35.9	36.8	35.4	33.3	31.2	30.8	29.3	26.4	21.2	16.2	13.5	26
28		31.5	32.6	32	30.2	29.6	28.1	26.6	25	21.3	16.4	13.6	28
30		28	29	29.1	27.6	27.5	25.8	24.4	23	21.4	16.4	13.7	30
32		25.1	26	26.3	26	25.3	23.8	23.2	22	20.6	16.4	13.8	32
34		22.7	23.5	23.8	24.5	23.3	22	21.6	20.5	19.2	16.3	13.8	34
36		20.6	21.4	22.1	22.4	21.6	21	20.1	19	17.9	16.1	13.8	36
38			19.6	20.6	20.7	20.1	19.8	18.7	18.1	17	15.8	13.8	38
40			18	19	19	18.6	18.5	17.6	16.9	16.3	15.1	13.6	40
45			14.9	15.8	15.7	16	15.7	15.4	14.5	13.8	12.8	12.4	45
50				13.3	13.3	13.6	13.4	13.3	12.5	11.8	10.9	10.6	50
55				11.4	11.4	11.7	11.4	11.4	10.8	10.2	9.3	9	55
60					9.8	10.1	9.9	9.7	9.2	8.8	8	7.8	60
65					8.6	8.8	8.6	8.4	7.9	7.6	6.9	6.7	65
70					7.6	7.8	7.5	7.4	6.9	6.6	5.9	5.7	70
75						6.9	6.6	6.5	6.1	5.7	5.1	4.9	75
80						6.1	5.8	5.7	5.3	5	4.4	4.2	80
85							5.1	5	4.6	4.3	3.8	3.6	85
90							4.5	4.4	4	3.7	3.2	3	90
95								3.8	3.4	3.2	2.7	2.6	95
100								3.3	2.9	2.7	2.2	2.1	100
105								2.9	2.5	2.2			105
110									2.1	1.8			110
115									1.8				115

maxt\_250\_00212\_00\_000

# Lifting capacities – on tyres

## Forces de levage – sur pneus

T




34-45ft  
14.00 R 25  
360°/0°  
28,200lb  
12,100lb  
10,800lb  
**85%**

	34 ft					45 ft						
	28,200 lb		12,100 lb		10,800 lb	28,200 lb		12,100 lb		10,800 lb		
	0°	360°	0°	360°	0°	0°	360°	0°	360°	0°		
10	33.2		20.9		19.8	32.3		21.3		20.4	10	
11	29.8		18.4		17.4	29.7		19		18.1	11	
12	26.8		16.2		15.4	27.1		17		16.2	12	
13	24.3		14.6		13.8	24.7		15.3		14.6	13	
14	22.2		13.2		12.5	22.7		14		13.3	14	
15	20.3		11.9		11.3	21		12.8		12.2	15	
16	18.5	9.8	10.8		9.1	19.3		11.8		11.2	16	
17	16.9	8.8	9.6		8.3	17.7		10.8		10.1	17	
18	15.6	8.1	8.6		7.6	16.4		9.9	7.7	9.1	18	
19	14.5	7.4	7.9		6.9	15.3	7	9	7.5	8.3	19	
20	13.5	6.8	7.2		6.3	14.3	7	8.2	7	7.7	20	
22	11.8	5.8	6		5.4	12.6	6.4	7	6	6.6	22	
24	10.2	5	5.1		4.6	11.2	5.5	6	5.2	5.6	24	
26						9.7	4.8	5.2	4.4	4.8	26	
28						8.5	4.1	4.5	3.6	4	28	
30						7.7	3.4	3.7	2.9	3.3	30	
32						6.9	2.8	3	2.4	2.6	32	
34						6.3	2.3	2.5	1.9	2.1	34	
36						5.7	2.1	2.1			36	

0° = over rear - en arrière

t\_250\_01201\_00\_000 / 01411\_00\_000 / 01211\_00\_000 / 01412\_00\_000 / 01212\_00\_000



34-45ft  
16.00 R 25  
360°/0°  
28,200lb  
12,100lb  
10,800lb  
**85%**

	34 ft					45 ft						
	28,200 lb		12,100 lb		10,800 lb	28,200 lb		12,100 lb		10,800 lb		
	0°	360°	0°	360°	0°	0°	360°	0°	360°	0°		
10	33.1		20.9		19.7	32.3		21.2		20.3	10	
11	29.7		18.3		17.3	29.6		18.9		18.1	11	
12	26.7		16.2		15.4	27		16.9		16.1	12	
13	24.2		14.5		13.8	24.6		15.2		14.5	13	
14	22.1		13.1		12.4	22.6		13.9		13.3	14	
15	20.2		11.9		11.2	20.9		12.8		12.2	15	
16	18.4	9.8	10.8		9.1	19.2		11.7		11.1	16	
17	16.9	8.8	9.6		8.3	17.6		10.8		10.1	17	
18	15.5	8.1	8.6		7.6	16.3		9.8	7.7	9.1	18	
19	14.4	7.4	7.8		6.9	15.2	7	8.9	7.5	8.3	19	
20	13.5	6.8	7.2		6.3	14.2	7	8.1	7	7.7	20	
22	11.8	5.8	6		5.4	12.6	6.4	7	6	6.5	22	
24	10.1	5	5.1		4.6	11.1	5.6	6	5.2	5.6	24	
26						9.6	4.8	5.2	4.4	4.8	26	
28						8.5	4.1	4.4	3.6	4	28	
30						7.7	3.4	3.7	2.9	3.2	30	
32						6.9	2.8	3	2.4	2.6	32	
34						6.2	2.3	2.5	1.9	2.1	34	
36						5.7	2.1	2.1			36	

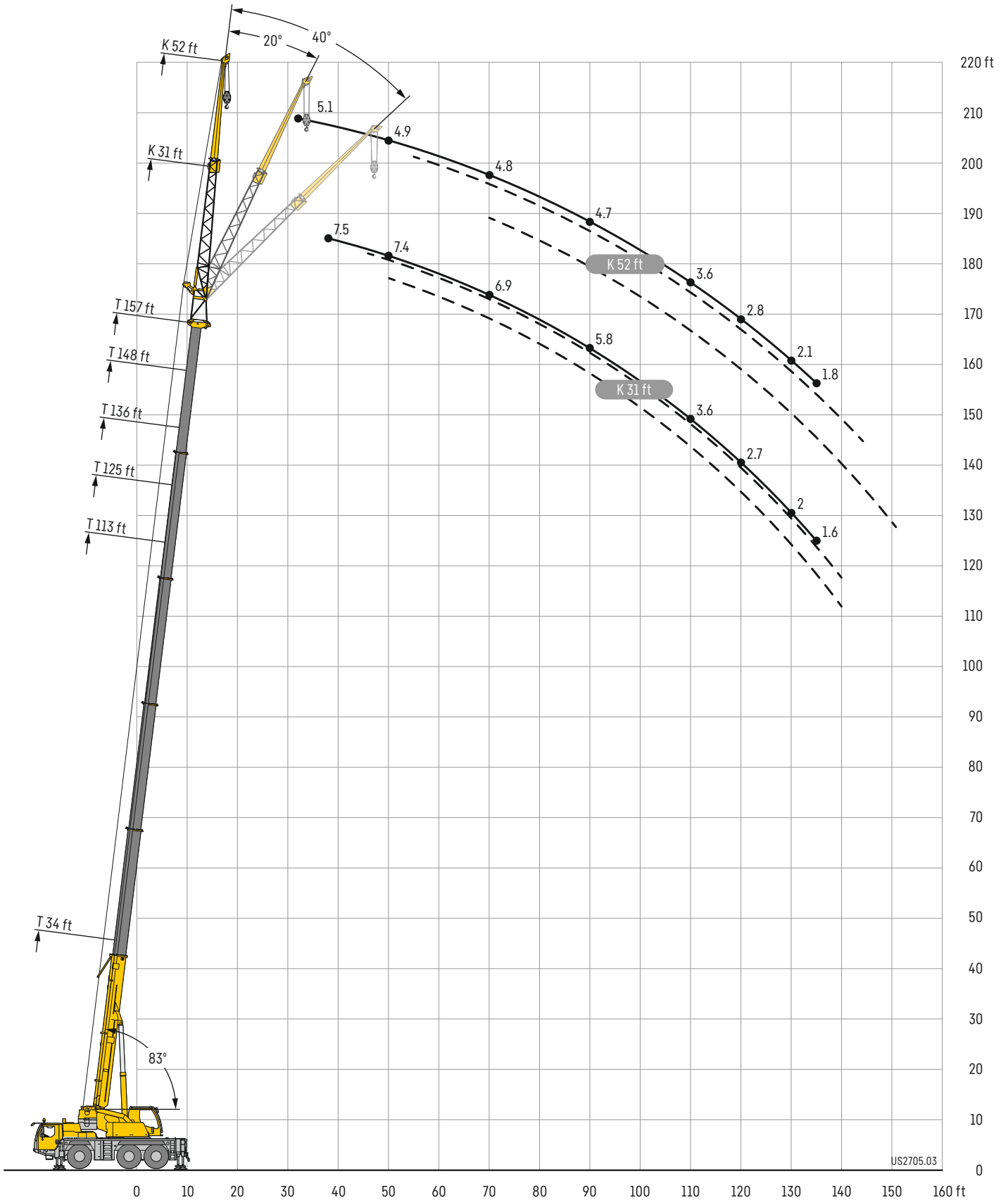
0° = over rear - en arrière

t\_250\_01301\_00\_000 / 01511\_00\_000 / 01311\_00\_000 / 01512\_00\_000 / 01312\_00\_000



# Lifting heights

## Hauteurs de levage

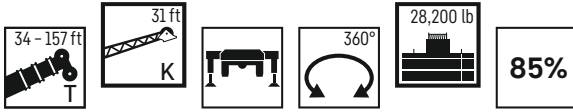


US2705.03

# Lifting capacities

## Forces de levage

TK



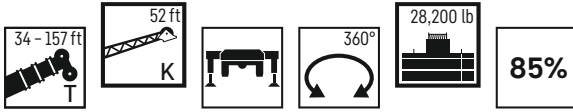
	34 ft			113 ft			125 ft			136 ft			148 ft			157 ft			
	K 31 ft																		
	0°	20°	40°	0°	20°	40°	0°	20°	40°	0°	20°	40°	0°	20°	40°	0°	20°	40°	
10	17.5																		10
11	17.1																		11
12	16.7	14.8																	12
13	16.4	14.8																	13
14	16	14.8																	14
15	15.6	14.8																	15
16	15.2	14.8																	16
17	14.8	14.7																	17
18	14.5	14.6																	18
19	14.1	14.4	11.5	16.7															19
20	13.7	14.2	11.5	16.7															20
22	13	13.7	11.5	16.8			14												22
24	12.3	13.2	11.5	16.7			14			11.5									24
26	11.6	12.7	11.4	16.5			14			11.6									26
28	11	12.2	11.3	16.4			14			11.6									28
30	10.3	11.6	11.1	16.2	14.3		13.9			11.7									30
32	9.6	11.1	10.9	16	14.1		13.8	12.8		11.7									32
34	8.9	10.4	10.6	15.9	13.9		13.8	12.6		11.7									34
36	8.4	9.8	10.1	15.7	13.7	11.5	13.7	12.5		11.7	11.1		8.6						36
38	7.8	9.2	9.6	15.5	13.5	11.5	13.6	12.4		11.6	11		8.6	8.8			7.5		38
40	7.2	8.6	9.1	15.3	13.3	11.5	13.5	12.2	11	11.6	10.9		8.6	8.7			7.5		40
45	6.2	7.5	7.8	14.9	12.9	11.3	13.2	11.9	10.8	11.4	10.7	9.9	8.6	8.6			7.4	7.5	45
50	5.1	6.2	6.1	14.4	12.4	11	12.9	11.5	10.5	11.2	10.5	9.7	8.5	8.4	8.1	7.4	7.4	7.4	50
55	4.2	4.5		13.6	12	10.7	12.6	11.2	10.2	10.9	10.3	9.4	8.3	8.2	7.8	7.4	7.3	7.2	55
60				12.6	11.6	10.4	12	10.9	10	10.5	9.8	9.3	8.1	7.9	7.6	7.2	7.2	7.1	60
65				11.6	11.1	10.1	10.6	10.6	9.4	10	9.3	9	7.9	7.7	7.4	7	7	6.9	65
70				10.3	10.5	9.6	9.7	10.1	9.2	9.3	9	8.7	7.7	7.5	7.2	6.9	6.8	6.7	70
75				9.1	9.7	9.2	9.1	9	9	8.4	8.6	8.4	7.4	7.3	7	6.7	6.6	6.6	75
80				8.4	8.6	8.8	8.1	8.4	8.5	7.6	8	8.1	7.1	7	6.9	6.5	6.4	6.4	80
85				7.6	7.9	7.9	7.5	7.7	7.9	7.2	7.2	7.6	6.7	6.8	6.7	6.2	6.2	6.3	85
90				7.1	7.2	7.4	6.8	7	7.2	6.6	6.7	6.8	6	6.5	6.5	5.8	6	6.1	90
95				6.4	6.6	6.6	6.3	6.5	6.6	5.9	6.3	6.4	5.4	5.8	6.2	5.2	5.6	5.8	95
100				6	6.1	6.2	5.6	5.9	6.1	5.2	5.7	6	4.8	5.2	5.5	4.6	5	5.4	100
105				5.4	5.7	5.8	5	5.3	5.6	4.6	5.1	5.3	4.2	4.6	4.9	4.1	4.5	4.8	105
110				4.9	5.1		4.5	4.7	5	4.1	4.5	4.7	3.7	4.1	4.3	3.6	4	4.2	110
115				4.4	4.6		4	4.2	4.4	3.6	4	4.2	3.2	3.6	3.8	3.1	3.5	3.8	115
120				4	4.2		3.6	3.8		3.2	3.5	3.7	2.8	3.1	3.3	2.7	3	3.3	120
125				3.6	3.7		3.2	3.4		2.8	3.1	3.1	2.4	2.7	2.8	2.3	2.6	2.8	125
130				3.3			2.8	3		2.5	2.7		2	2.3	2.4	2	2.2	2.4	130
135				3			2.5	2.6		2.1	2.4		1.7	1.9		1.6	1.9	2	135
140							2.2			1.8	2			1.6			1.6	1.7	140
145							1.9			1.6	1.7								145

t\_250\_11001\_00\_000 / 12001\_00\_000 / 13001\_00\_000

# Lifting capacities

## Forces de levage

TK



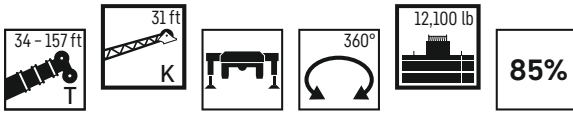
	34 ft			113 ft			125 ft			136 ft			148 ft			157 ft			
	K 52 ft																		
	0°	20°	40°	0°	20°	40°	0°	20°	40°	0°	20°	40°	0°	20°	40°	0°	20°	40°	
10	9																		10
11	9																		11
12	9																		12
13	8.9																		13
14	8.9																		14
15	8.8																		15
16	8.7																		16
17	8.6																		17
18	8.4																		18
19	8.3																		19
20	8.2																		20
22	8	8.7		8.6															22
24	7.7	8.4		8.6			7.7												24
26	7.5	8.2		8.5			7.6												26
28	7.2	8		8.5			7.6			6.7									28
30	7	7.7		8.4			7.5			6.7			5.8						30
32	6.9	7.5		8.3			7.5			6.7			5.8			5.1			32
34	6.7	7.3		8.2			7.4			6.6			5.7			5.1			34
36	6.5	7.1	5.3	8.2			7.4			6.6			5.7			5.1			36
38	6.3	6.9	5.3	8.1			7.3			6.6			5.7			5.1			38
40	6.1	6.7	5.3	8	6.9		7.3			6.5			5.7			5.1			40
45	5.7	6.3	5.1	7.8	6.7		7.2	6.3		6.5			5.7			5			45
50	5.3	6	5.1	7.6	6.5		7	6.2		6.4	5.8		5.6	5.3		4.9			50
55	4.8	5.7	5	7.4	6.3	5.3	6.9	6		6.3	5.7		5.6	5.2		4.9	4.8		55
60	4.2	5.3	4.8	7.2	6.1	5.3	6.7	5.9	5.1	6.2	5.6	5	5.5	5.1		4.8	4.8		60
65	3.7	4.7	4.7	7	5.9	5.2	6.6	5.7	5.1	6.1	5.5	4.9	5.4	5.1	4.7	4.8	4.8		65
70	3.3	4	4.4	6.8	5.8	5.1	6.4	5.6	5	5.9	5.4	4.9	5.4	5	4.7	4.8	4.7	4.5	70
75	2.9	3.3		6.6	5.6	5	6.2	5.5	4.9	5.8	5.2	4.8	5.3	4.9	4.6	4.7	4.7	4.5	75
80				6.3	5.5	4.9	6.1	5.4	4.9	5.7	5.2	4.7	5.2	4.9	4.6	4.7	4.6	4.5	80
85				6.1	5.4	4.9	5.9	5.2	4.8	5.6	5.1	4.7	5.2	4.8	4.6	4.7	4.6	4.4	85
90				5.9	5.3	4.8	5.8	5.1	4.7	5.5	5	4.7	5.1	4.8	4.5	4.7	4.5	4.4	90
95				5.7	5.2	4.8	5.5	5.1	4.7	5.3	4.9	4.6	5	4.7	4.5	4.6	4.5	4.4	95
100				5.3	5.1	4.7	5.3	5	4.7	5.1	4.8	4.6	4.8	4.6	4.5	4.4	4.4	4.3	100
105				5	4.9	4.7	5	4.9	4.7	4.8	4.8	4.6	4.3	4.6	4.4	4.1	4.3	4.2	105
110				4.7	4.8	4.7	4.7	4.7	4.7	4.4	4.6	4.6	3.8	4.4	4.3	3.6	4.2	4.2	110
115				4.5	4.6	4.7	4.3	4.4	4.7	3.9	4.4	4.4	3.4	4	4.2	3.2	3.8	4.1	115
120				4.3	4.2	4.4	3.9	4.2	4.2	3.5	4	4.2	3	3.6	4	2.8	3.4	3.8	120
125				3.9	4.1	4.1	3.5	3.9	4.1	3.1	3.6	3.9	2.6	3.2	3.6	2.4	3	3.4	125
130				3.5	3.8		3.1	3.5	3.7	2.7	3.2	3.5	2.3	2.8	3.1	2.1	2.6	3	130
135				3.2	3.4		2.7	3.1	3.3	2.4	2.8	3	1.9	2.4	2.7	1.8	2.3	2.6	135
140				2.9	3.1		2.4	2.7		2.1	2.4	2.7	1.6	2	2.3		2	2.3	140
145				2.6	2.8		2.2	2.4		1.8	2.1	2.3		1.7	2		1.7	1.9	145
150				2.3	2.5		1.9	2.1			1.8				1.6			1.6	150
155				2.1			1.7	1.8			1.6								155
160								1.6											160

t\_250\_21001\_00\_000 / 22001\_00\_000 / 23001\_00\_000

# Lifting capacities

## Forces de levage

TK



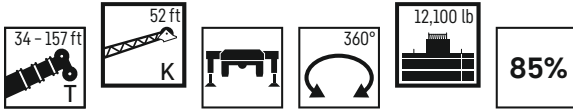
	34 ft			113 ft			125 ft			136 ft			148 ft			157 ft			
	K 31 ft																		
	0°	20°	40°	0°	20°	40°	0°	20°	40°	0°	20°	40°	0°	20°	40°	0°	20°	40°	
10	17.5																		10
11	17.1																		11
12	16.7	14.8																	12
13	16.4	14.8																	13
14	16	14.8																	14
15	15.6	14.8																	15
16	15.2	14.8																	16
17	14.8	14.7																	17
18	14.5	14.6																	18
19	14.1	14.4	11.5	16.7															19
20	13.7	14.2	11.5	16.7															20
22	13	13.7	11.5	16.8			14												22
24	12.3	13.2	11.5	16.7			14			11.5									24
26	11.6	12.7	11.4	16.5			14			11.6									26
28	11	12.2	11.3	16.4			14			11.6									28
30	10.3	11.6	11.1	16.2	14.3		13.9			11.7									30
32	9.6	11.1	10.9	16	14.1		13.8	12.8		11.7									32
34	8.9	10.4	10.6	15.9	13.9		13.8	12.6		11.7									34
36	8.4	9.8	10.1	15.7	13.7	11.5	13.7	12.5		11.7	11.1		8.6						36
38	7.8	9.2	9.6	15.1	13.5	11.5	13.6	12.4		11.6	11		8.6	8.8			7.5		38
40	7.2	8.6	9.1	14.6	13.3	11.5	13.5	12.2	11	11.6	10.9		8.6	8.7			7.5		40
45	6.2	7.5	7.8	12.9	12.8	11.3	12.3	11.9	10.8	11.2	10.7	9.9	8.6	8.6			7.4	7.5	45
50	5.1	6.2	6.1	11.4	11.8	11	10.9	11.1	10.5	10.1	10.4	9.7	8.5	8.4	8.1	7.4	7.4	7.4	50
55	4.2	4.5		10.2	10.7	10.4	9.6	10	10.1	9.1	9.2	9.4	8.1	8.2	7.8	7.4	7.3	7.2	55
60				9.3	9.3	9.6	8.5	8.6	9.3	7.9	8.2	8.7	7.2	7.9	7.6	6.8	7.2	7.1	60
65				8.1	8.2	8.6	7.4	8	8.1	6.8	7.6	7.6	6.1	6.9	7.4	5.9	6.7	6.9	65
70				7.1	7.6	7.5	6.5	7.1	7.4	5.9	6.6	7.2	5.2	6	6.6	5	5.8	6.4	70
75				6.3	6.8	7.1	5.6	6.2	6.8	5.1	5.8	6.3	4.4	5.1	5.6	4.3	4.9	5.5	75
80				5.5	6	6.4	4.9	5.4	5.9	4.4	5	5.5	3.8	4.4	4.8	3.6	4.2	4.7	80
85				4.8	5.3	5.6	4.3	4.7	5.2	3.7	4.4	4.7	3.2	3.7	4.1	3	3.6	4	85
90				4.2	4.6	4.9	3.7	4.1	4.5	3.2	3.8	4.1	2.6	3.1	3.5	2.5	3	3.4	90
95				3.7	4	4.3	3.2	3.6	3.9	2.7	3.2	3.5	2.1	2.6	2.9	2	2.5	2.8	95
100				3.2	3.4	3.7	2.7	3.1	3.4	2.2	2.7	3	1.7	2.1	2.4		2	2.3	100
105				2.7	3	3.2	2.3	2.6	2.9	1.8	2.3	2.5		1.7	2		1.6	1.9	105
110				2.3	2.5		1.9	2.2	2.4		1.9	2.1							110
115				2	2.2			1.8	2			1.7							115
120				1.6	1.8														120

t\_250\_11011\_00\_000 / 12011\_00\_000 / 13011\_00\_000

# Lifting capacities

## Forces de levage

TK



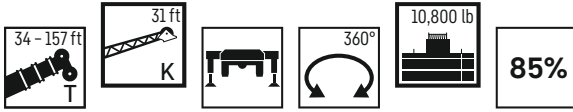
	34 ft			113 ft			125 ft			136 ft			148 ft			157 ft			
	K 52 ft																		
	0°	20°	40°	0°	20°	40°	0°	20°	40°	0°	20°	40°	0°	20°	40°	0°	20°	40°	
10	9																		10
11	9																		11
12	9																		12
13	8.9																		13
14	8.9																		14
15	8.8																		15
16	8.7																		16
17	8.6																		17
18	8.4																		18
19	8.3																		19
20	8.2																		20
22	8	8.7		8.6															22
24	7.7	8.4		8.6			7.7												24
26	7.5	8.2		8.5			7.6												26
28	7.2	8		8.5			7.6			6.7									28
30	7	7.7		8.4			7.5			6.7			5.8						30
32	6.9	7.5		8.3			7.5			6.7			5.8			5.1			32
34	6.7	7.3		8.2			7.4			6.6			5.7			5.1			34
36	6.5	7.1	5.3	8.2			7.4			6.6			5.7			5.1			36
38	6.3	6.9	5.3	8.1			7.3			6.6			5.7			5.1			38
40	6.1	6.7	5.3	8	6.9		7.3			6.5			5.7			5.1			40
45	5.7	6.3	5.1	7.8	6.7		7.2	6.3		6.5			5.7			5			45
50	5.3	6	5.1	7.6	6.5		7	6.2		6.4	5.8		5.6	5.3		4.9			50
55	4.8	5.7	5	7.4	6.3	5.3	6.9	6		6.3	5.7		5.6	5.2		4.9	4.8		55
60	4.2	5.3	4.8	7.1	6.1	5.3	6.7	5.9	5.1	6.2	5.6	5	5.5	5.1		4.8	4.8		60
65	3.7	4.7	4.7	6.7	5.9	5.2	6.3	5.7	5.1	5.9	5.5	4.9	5.4	5.1	4.7	4.8	4.8		65
70	3.3	4	4.4	6.3	5.8	5.1	6	5.6	5	5.6	5.4	4.9	5.1	5	4.7	4.8	4.7	4.5	70
75	2.9	3.3		6	5.5	5	5.8	5.4	4.9	5.2	5.2	4.8	4.5	4.9	4.6	4.3	4.7	4.5	75
80				5.7	5.3	4.9	5.1	5.2	4.9	4.5	5	4.7	3.8	4.7	4.6	3.7	4.5	4.5	80
85				5.1	5.1	4.8	4.5	5	4.8	3.9	4.7	4.7	3.2	4.2	4.6	3.1	4	4.4	85
90				4.5	4.9	4.8	3.9	4.7	4.7	3.4	4.2	4.6	2.7	3.6	4.3	2.5	3.4	4.2	90
95				4	4.6	4.7	3.4	4.1	4.5	2.9	3.7	4.3	2.2	3.1	3.8	2.1	2.9	3.6	95
100				3.5	4.1	4.4	2.9	3.6	4.1	2.4	3.2	3.7	1.8	2.6	3.2	1.6	2.4	3.1	100
105				3	3.6	4	2.5	3.1	3.6	2	2.7	3.2		2.1	2.7		2	2.6	105
110				2.6	3.1	3.4	2.2	2.7	3.1	1.7	2.3	2.8		1.7	2.3		1.6	2.2	110
115				2.3	2.7	3	1.8	2.3	2.7		1.9	2.3			1.8			1.7	115
120				1.9	2.3	2.6		2	2.3		1.6	1.9							120
125				1.6	2	2.2		1.6	1.9			1.6							125
130					1.7				1.6										130

t\_250\_21011\_00\_000 / 22011\_00\_000 / 23011\_00\_000

# Lifting capacities

## Forces de levage

TK



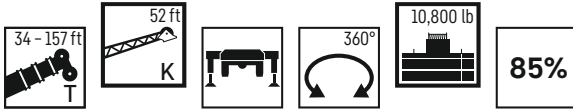
	34 ft			113 ft			125 ft			136 ft			148 ft			157 ft			
	K 31 ft																		
	0°	20°	40°	0°	20°	40°	0°	20°	40°	0°	20°	40°	0°	20°	40°	0°	20°	40°	
10	17.5																		10
11	17.1																		11
12	16.7	14.8																	12
13	16.4	14.8																	13
14	16	14.8																	14
15	15.6	14.8																	15
16	15.2	14.8																	16
17	14.8	14.7																	17
18	14.5	14.5																	18
19	14.1	14.4	11.5	16.7															19
20	13.7	14.2	11.5	16.7															20
22	13	13.7	11.5	16.8			14												22
24	12.3	13.2	11.5	16.7			14			11.4									24
26	11.7	12.7	11.4	16.5			14			11.6									26
28	11	12.2	11.3	16.4			14			11.6									28
30	10.3	11.6	11.1	16.2	14.3		13.9			11.7									30
32	9.6	11	10.9	16	14.1		13.9	12.7		11.7									32
34	9	10.4	10.6	15.9	13.9		13.8	12.6		11.7									34
36	8.4	9.8	10.1	15.5	13.7	11.5	13.7	12.5		11.7	11.1		8.6						36
38	7.8	9.2	9.6	14.9	13.5	11.5	13.6	12.4		11.6	11		8.6	8.8			7.5		38
40	7.2	8.6	9.1	14.4	13.3	11.5	13.2	12.2	11	11.6	10.9		8.6	8.7			7.5		40
45	6.2	7.5	7.8	12.6	12.6	11.3	12	11.9	10.8	11	10.7	9.9	8.6	8.6			7.4	7.5	45
50	5.1	6.2	6.1	11.1	11.5	11	10.5	11	10.5	9.6	10.3	9.7	8.5	8.4	8.1	7.4	7.4	7.4	50
55	4.2	4.5		10	10.2	10.3	9.3	9.6	10	8.7	8.9	9.4	8	8.2	7.8	7.3	7.3	7.2	55
60				8.8	8.8	9.4	8.1	8.5	8.9	7.5	8	8.3	6.8	7.6	7.6	6.5	7.1	7.1	60
65				7.7	8.1	8.2	7	7.7	7.8	6.4	7.3	7.5	5.7	6.5	7.2	5.6	6.3	6.9	65
70				6.8	7.4	7.4	6.1	6.7	7.3	5.5	6.3	6.8	4.9	5.6	6.2	4.7	5.4	6	70
75				5.9	6.5	6.9	5.3	5.9	6.4	4.7	5.4	5.9	4.1	4.8	5.3	3.9	4.6	5.1	75
80				5.2	5.7	6.1	4.6	5.1	5.6	4	4.7	5.1	3.4	4	4.5	3.3	3.9	4.4	80
85				4.6	5	5.3	4	4.4	4.9	3.4	4.1	4.4	2.9	3.4	3.9	2.7	3.3	3.7	85
90				3.9	4.3	4.6	3.4	3.8	4.3	2.9	3.5	3.8	2.3	2.8	3.2	2.2	2.7	3.1	90
95				3.4	3.7	4	2.9	3.3	3.7	2.4	2.9	3.3	1.9	2.3	2.7	1.7	2.2	2.6	95
100				2.9	3.2	3.4	2.5	2.8	3.1	2	2.5	2.8		1.9	2.2		1.7	2.1	100
105				2.5	2.7	3	2.1	2.4	2.6	1.6	2	2.3			1.7			1.6	105
110				2.1	2.3		1.7	2	2.2		1.6	1.9							110
115				1.8	2			1.6	1.8										115
120					1.6														120

maxt\_250\_11012\_01\_000

# Lifting capacities

## Forces de levage

TK

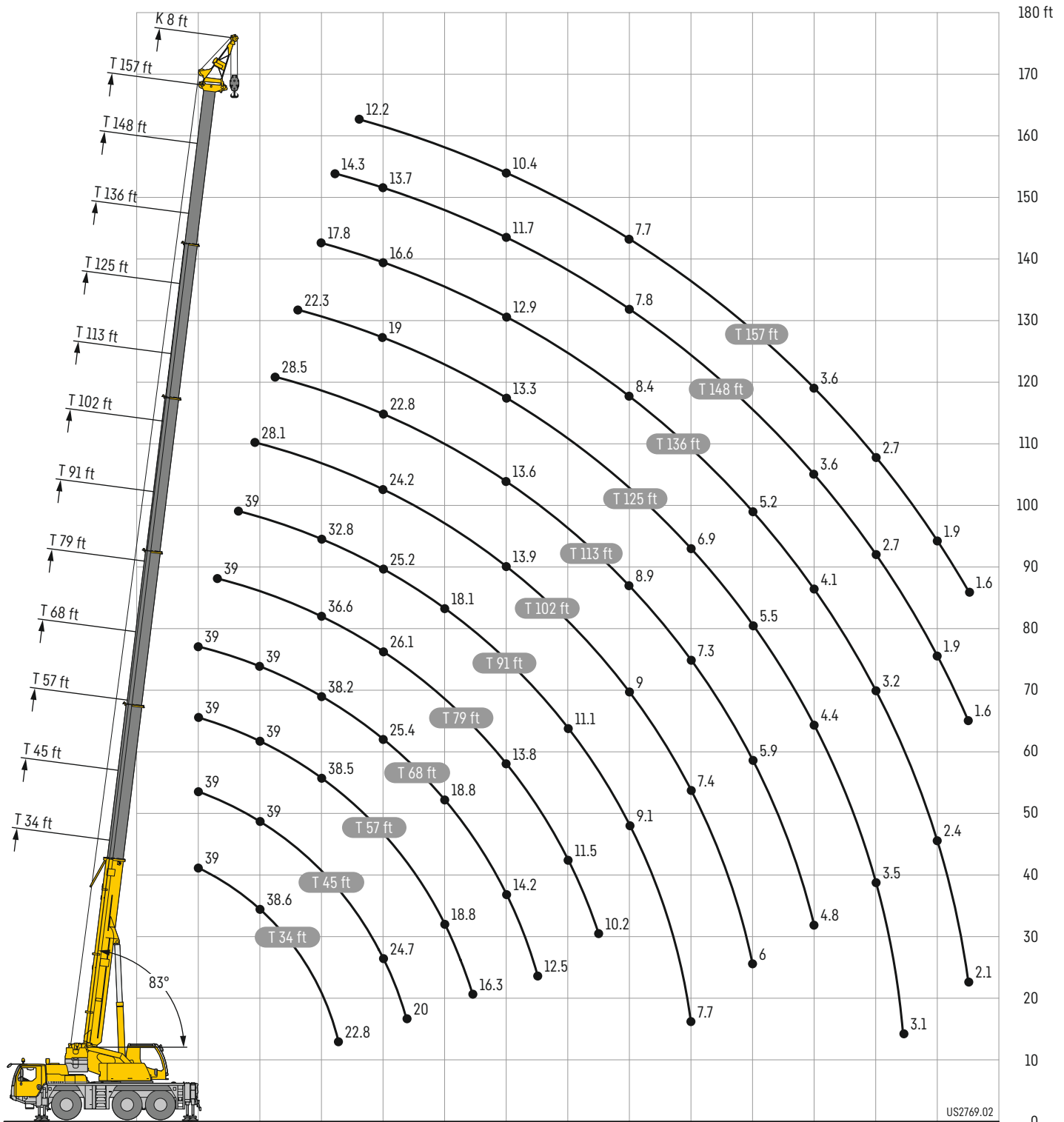


	34 ft			113 ft			125 ft			136 ft			148 ft			157 ft			
	K 52 ft																		
	0°	20°	40°	0°	20°	40°	0°	20°	40°	0°	20°	40°	0°	20°	40°	0°	20°	40°	
10	9																		10
11	9																		11
12	9																		12
13	8.9																		13
14	8.9																		14
15	8.8																		15
16	8.7																		16
17	8.6																		17
18	8.4																		18
19	8.3																		19
20	8.2																		20
22	8	8.7		8.6															22
24	7.7	8.4		8.6			7.7												24
26	7.5	8.2		8.5			7.6												26
28	7.2	8		8.5			7.6			6.7									28
30	7	7.7		8.4			7.5			6.7			5.8						30
32	6.9	7.5		8.3			7.5			6.7			5.8			5.1			32
34	6.7	7.3		8.2			7.4			6.6			5.8			5.1			34
36	6.5	7.1	5.3	8.2			7.4			6.6			5.7			5.1			36
38	6.3	6.9	5.3	8.1			7.3			6.6			5.7			5.1			38
40	6.1	6.7	5.3	8	6.9		7.3			6.5			5.7			5.1			40
45	5.7	6.3	5.1	7.8	6.6		7.2	6.3		6.5			5.6			5			45
50	5.3	6	5.1	7.6	6.5		7	6.2		6.4	5.8		5.6	5.3		4.9			50
55	4.8	5.7	5	7.3	6.3	5.3	6.9	6		6.3	5.7		5.6	5.2		4.9	4.8		55
60	4.2	5.3	4.8	7	6.1	5.3	6.5	5.9	5.1	6.2	5.6	5	5.5	5.1		4.8	4.8		60
65	3.7	4.7	4.7	6.7	5.9	5.2	6.2	5.7	5.1	5.7	5.4	4.9	5.4	5.1	4.7	4.8	4.8		65
70	3.3	4	4.4	6.3	5.7	5.1	6	5.6	5	5.5	5.4	4.9	5	5	4.7	4.6	4.7	4.5	70
75	2.9	3.3		5.9	5.5	5	5.4	5.4	4.9	4.9	5.2	4.8	4.2	4.9	4.6	4	4.7	4.5	75
80				5.4	5.3	4.9	4.8	5.1	4.9	4.2	4.9	4.7	3.5	4.5	4.6	3.4	4.4	4.5	80
85				4.8	5.1	4.8	4.2	4.9	4.8	3.6	4.5	4.7	3	3.9	4.6	2.8	3.7	4.4	85
90				4.2	4.8	4.7	3.6	4.4	4.7	3.1	3.9	4.5	2.4	3.4	4.1	2.2	3.2	4	90
95				3.7	4.4	4.6	3.1	3.8	4.4	2.6	3.4	4	2	2.8	3.5	1.8	2.7	3.4	95
100				3.3	3.8	4.3	2.7	3.4	3.9	2.2	2.9	3.5		2.3	3		2.2	2.9	100
105				2.8	3.3	3.7	2.3	2.9	3.4	1.8	2.4	3		1.9	2.5		1.8	2.4	105
110				2.4	2.9	3.2	1.9	2.5	2.9		2.1	2.5			2			1.9	110
115				2.1	2.5	2.8	1.6	2.1	2.5		1.7	2.1			1.6				115
120				1.7	2.1	2.4		1.8	2.1			1.7							120
125					1.8	2			1.7										125

maxt\_250\_21012\_01\_000

# Lifting heights

## Hauteurs de levage

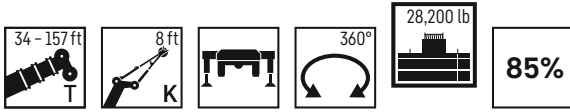




# Lifting capacities

## Forces de levage

TK



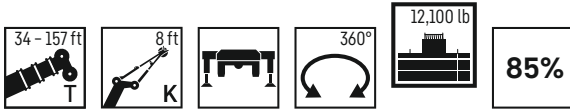
	34 ft	45 ft	57 ft	68 ft	79 ft	91 ft	102 ft	113 ft	125 ft	136 ft	148 ft	157 ft	
	K 8 ft												
10	39	39	39	39									10
11	39	39	39	39									11
12	39	39	39	39									12
13	39	39	39	39	39								13
14	39	39	39	39	39								14
15	39	39	39	39	39								15
16	39	39	39	39	39	39							16
17	39	39	39	39	39	39							17
18	39	39	39	39	39	38.9							18
19	39	39	39	39	39	38.7	28.1						19
20	38.6	39	39	39	39	38.4	36						20
22	35.9	39	39	39	39	37.5	35.8						22
24	32.9	39	39	39	39	36.3	35.2	28.5					24
26	29.8	39	39	39	39	35	34.3	28.4	22.3				26
28	27.2	37.5	39	39	39	33.8	33.4	28.1	21.9				28
30	24.8	35.2	38.5	38.2	36.6	32.8	32.5	27.5	21.6	17.8			30
32	22.8	32.9	36.2	35.9	33.9	31.7	31.3	26.8	21.1	17.6	14.3		32
34		30.5	33.1	32.8	31.3	30.4	29.3	26	20.7	17.4	14.2		34
36		28.3	30.3	30	29	28.9	27.2	25.1	20.1	17.2	14	12.2	36
38		26.5	27.8	27.5	27.6	27	25.5	24.1	19.5	16.9	13.9	12.1	38
40		24.7	25.7	25.4	26.1	25.2	24.2	22.8	19	16.6	13.7	12	40
45		20	21.4	22.1	21.8	21.3	20.7	19.5	17.9	15.7	13.2	11.7	45
50			18.8	18.8	18.5	18.1	17.7	17.1	16.8	14.9	12.7	11.3	50
55			16.3	16.3	15.9	15.5	15.6	15.6	14.7	14.1	12.2	10.9	55
60				14.2	13.8	14.1	13.9	13.6	13.3	12.9	11.7	10.4	60
65				12.5	12.5	12.6	12.1	12.3	12.1	11.4	11	9.7	65
70					11.5	11.1	11.2	10.9	10.8	10.6	9.9	9.2	70
75					10.2	9.9	10.1	9.7	9.6	9.5	8.8	8.6	75
80						9.1	9	8.9	8.7	8.4	7.8	7.7	80
85						8.4	8.1	8.1	7.8	7.5	6.9	6.8	85
90						7.7	7.4	7.3	6.9	6.6	6.1	6.1	90
95							6.7	6.5	6.2	5.9	5.4	5.4	95
100							6	5.9	5.5	5.2	4.7	4.7	100
105								5.3	4.9	4.6	4.1	4.1	105
110								4.8	4.4	4.1	3.6	3.6	110
115									3.9	3.6	3.1	3.1	115
120									3.5	3.2	2.7	2.7	120
125									3.1	2.8	2.3	2.3	125
130										2.4	1.9	1.9	130
135										2.1	1.6	1.6	135

t\_250\_30001\_00\_000

# Lifting capacities

## Forces de levage

TK



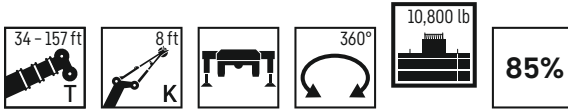
	34 ft	45 ft	57 ft	68 ft	79 ft	91 ft	102 ft	113 ft	125 ft	136 ft	148 ft	157 ft	
	K 8 ft												
10	39	39	39	39									10
11	39	39	39	39									11
12	39	39	39	39									12
13	39	39	39	39	39								13
14	39	39	39	39	39								14
15	39	39	39	39	39								15
16	39	39	39	39	39	39							16
17	39	39	39	39	39	39							17
18	39	39	39	39	39	38.9							18
19	39	39	39	39	39	38.7	28.1						19
20	38.6	39	39	39	39	38.4	36						20
22	35.9	39	39	38.9	38.9	37.5	35.8						22
24	32.9	39	38.7	38.5	35.8	35	33.1	28.5					24
26	29.8	37.5	36.8	34.6	33.5	31.8	29.9	27.5	22.3				26
28	27.2	33.4	33.2	31.2	30.6	28.7	27	25.2	21.9				28
30	24.8	29.7	29.9	29.2	27.9	26.2	24.6	22.9	21.6	17.8			30
32	22.8	26.7	26.9	27.1	25.5	23.9	22.4	21.7	20.7	17.6	14.3		32
34		23.9	24.8	24.8	23.4	21.9	21.2	20.6	19.1	17.4	14.2		34
36		21.6	22.7	22.7	21.5	20.2	19.9	19	17.8	16.9	14	12.2	36
38		20.1	20.7	20.7	19.9	19.2	18.6	17.6	17.1	16.2	13.9	12.1	38
40		18.4	19	19	18.5	18.3	17.3	16.8	16.1	15	13.7	12	40
45		15	15.5	15.5	15.8	15.6	15.2	14.5	14	13.3	12.3	11.6	45
50			12.9	13.5	13.5	13.6	13.2	12.8	12	11.3	10.4	10.1	50
55			10.9	11.5	11.4	11.6	11.4	11	10.4	9.7	8.8	8.6	55
60				9.9	9.8	10	9.8	9.6	9	8.3	7.5	7.4	60
65				8.6	8.5	8.7	8.5	8.3	7.8	7.2	6.4	6.3	65
70					7.4	7.6	7.4	7.2	6.8	6.2	5.5	5.3	70
75					6.5	6.7	6.4	6.3	5.9	5.4	4.6	4.5	75
80						5.8	5.6	5.4	5.1	4.6	3.9	3.8	80
85						5.1	4.8	4.7	4.3	4	3.3	3.2	85
90						4.5	4.2	4.1	3.7	3.4	2.7	2.6	90
95							3.7	3.5	3.2	2.8	2.2	2.1	95
100							3.2	3	2.7	2.3	1.7	1.6	100
105								2.6	2.2	1.9			105
110								2.2	1.8				110

t\_250\_30011\_00\_000

# Lifting capacities

## Forces de levage

TK



	34 ft	45 ft	57 ft	68 ft	79 ft	91 ft	102 ft	113 ft	125 ft	136 ft	148 ft	157 ft	
	K 8 ft												
10	39	39	39	39									10
11	39	39	39	39									11
12	39	39	39	39									12
13	39	39	39	39	39								13
14	39	39	39	39	39								14
15	39	39	39	39	39								15
16	39	39	39	39	39	39							16
17	39	39	39	39	39	39							17
18	39	39	39	39	39	38.9							18
19	39	39	39	39	39	38.7	28.2						19
20	38.5	39	39	39	39	38.4	36						20
22	35.9	39	39	38.7	38.2	37.2	34.8						22
24	32.9	39	38.6	37.3	35.3	34	32.1	28.4					24
26	29.8	36.7	35.7	33.5	33	30.6	28.8	26.8	22.3				26
28	27.2	32.5	32	30.9	29.5	27.7	26.1	24.2	21.9				28
30	24.8	28.9	28.8	28.7	27	25.3	23.7	22.5	21.6	17.8			30
32	22.8	25.8	26.1	26.1	24.6	23	22.1	21.4	19.9	17.6	14.3		32
34		23.1	24.2	23.9	22.6	21.1	20.8	19.9	18.3	17.3	14.2		34
36		21.2	21.9	22	20.8	19.9	19.3	18.4	17.7	16.5	14	12.2	36
38		19.4	20	20	19.1	19	18	17.4	16.7	15.5	13.9	12.1	38
40		17.7	18.3	18.3	17.8	17.9	16.7	16.3	15.5	14.7	13.6	12	40
45		14.4	14.9	14.9	15.5	15.1	14.8	14.3	13.4	12.7	11.7	11.3	45
50			12.4	13.1	12.9	13.2	12.8	12.3	11.5	10.8	9.9	9.7	50
55			10.5	11.1	11	11.2	11	10.6	9.9	9.2	8.4	8.2	55
60				9.5	9.4	9.6	9.4	9.2	8.5	7.9	7.1	6.9	60
65				8.2	8.1	8.3	8.1	8	7.4	6.8	6	5.9	65
70					7.1	7.3	7	6.9	6.4	5.8	5.1	5	70
75					6.2	6.4	6.1	5.9	5.5	5	4.3	4.2	75
80						5.5	5.3	5.1	4.8	4.3	3.6	3.5	80
85						4.8	4.6	4.4	4.1	3.7	3	2.9	85
90						4.3	3.9	3.8	3.4	3.1	2.4	2.3	90
95							3.4	3.2	2.9	2.6	1.9	1.8	95
100							2.9	2.8	2.4	2.1			100
105								2.4	2	1.7			105
110								2	1.6				110

maxt\_250\_30012\_00\_000

# Equipment

## Crane carrier

<b>Frame</b>	Liebherr designed and manufactured, box-type, torsion resistant design of hightensile fine grained structural steel.
<b>Outriggers</b>	4-point supporting system, hydraulically telescopic into horizontal and vertical direction. Operation with remote control, automatic support leveling, electronic inclination display.
<b>Engine</b>	6-cylinder Diesel, make Liebherr, watercooled, output 270 kW (367 h.p.), max. torque 1407 lb-ft. Exhaust emissions to (EU 2016/1628 and EPA/CARB or ECE-R.96, spark arrestor. Fuel reservoir: 93 gallons.
<b>Transmission</b>	ZF 12-speed gear box with automatic control system. Two-stage transfer case with lockable transfer differential.
<b>Axles</b>	All axles steered, axle 2 and 3 driven with lockable differential gears.
<b>Suspension</b>	All axles with hydropneumatic suspension and hydraulic locking facility.
<b>Tyres</b>	6 tyres. Tyre size: 445/95 R 25 (16.00 R 25).
<b>Steering</b>	2-circuit system with hydraulic servo steering. Active speed depending rear axle steering, special steering programs for various driving situations.
<b>Brakes</b>	Service brake: all-wheel servo-air brake, all axles are equipped with disc brakes, dual circuit. Hand brake: Spring-loaded, acting on all wheels of axles 1, 2 and 3. Sustained-action brake: Exhaust retarder with additional Liebherr braking system.
<b>Driver's cab</b>	Spacious corrosion resistant with comfort furnishings, mounted on rubber shock absorbers, safety glazing.
<b>Electrical system</b>	Modern data bus technique, 24 Volt DC.

## Crane superstructure

<b>Frame</b>	Liebherr-made, torsion-resistant, welded construction of high-tensile structural steel, single-row ball bearing slewing ring.
<b>Crane drive</b>	Diesel-hydraulic with 1 axial variable displacement pump with automatic capacity control, 1 double gear pump, driven by the carrier Diesel engine, open regulated oil circuits with electrically controlled "load sensing", operation of 4 movements simultaneously.
<b>Control</b>	Electrical control of drives by self-centering joysticks, armrest-integrated control elements, Liebherr system bus (LSB).
<b>Hoist gear</b>	Axial piston fixed displacement motor, hoist drum with integrated planetary gear and spring-loaded static brake, actuation by open regulated oil circuit.
<b>Luffing gear</b>	1 differential ram with pilot operated brake valve.
<b>Slewing gear</b>	Axial piston fixed displacement motor, planetary gear, spring-loaded static brake. Slewing gear invertible from released to locked as a standard feature.
<b>Crane cab</b>	Large screen area, compound glass, comfort furnishing, cabin tiltable 20° to rear.
<b>Safety devices</b>	LICCON2 safe load indicator, hoist limit switch, safety valves against pipe and hose rupture, test system for servicing.
<b>Telescopic boom</b>	1 base section and 5 telescopic sections. All telescopic sections extendable hydraulically and independently from one another. Rapid-cycle telescoping system TELEMATIK. Boom length: 34 ft - 157 ft.
<b>Counterweight</b>	12,100 lb
<b>Electrical system</b>	Modern data bus technique, 24 Volt DC.

## Additional equipment

<b>K</b>	Single folding jib, 31 ft Double swing-away jib 31 ft - 52 ft Mechanical adjustment 0°, 20°, 40°
<b>K</b>	Assembly jib 8 ft
<b>2<sup>nd</sup> hoist gear</b>	For two-hook operation or for operation with swing-away jib if the hoist rope shall remain reeved.
<b>Additional counterweight</b>	16,100 lb for a total counterweight of 28,200 lb.
<b>Tyres</b>	6 tyres. Tyre size: 525/80 R 25 (20.5 R 25).
<b>Drive 6 x 6</b>	Axle 1 additionally driven.
<b>Other items of equipment available on request.</b>	

# Équipement

## Châssis porteur

<b>Cadre</b>	Fabrication Liebherr, construction en caisson indéformable, en acier à haute résistance à grains fins.
<b>Calage</b>	Dispositif de calage horizontal et vertical en 4 points, entièrement déployable hydrauliquement. Utilisation avec commande à distance, mise à niveau automatique du calage, inclinomètre électronique.
<b>Moteur</b>	Moteur diesel, 6 cylindres, fabriqué par Liebherr, à refroidissement par eau, de 270 kW (367 ch), couple max. 1407 lb-ft. Emissions des gaz d'échappement conformes aux directives (EU) 2016/1628 et EPA/CARB ou ECE-R.96, pare-étincelles. Capacité du réservoir à carburant: 93 gallons.
<b>Boîte de vitesse</b>	Boîte de vitesses ZF à 12 rapports, mécanisme automatisé à commande. Boîte de transfert à 2 étages avec blocage de différentiel.
<b>Essieux</b>	Tous les essieux sont directeurs, les essieux 2 et 3 sont entraînés par des engrenages différentiels blocables.
<b>Suspension</b>	Tous les essieux sont suspendus hydropneumatiquement et blocable hydrauliquement.
<b>Pneumatiques</b>	6 roues. Taille: 445/95 R 25 (16.00 R 25).
<b>Direction</b>	2 circuits avec direction assistée hydraulique. Direction active des essieux arrière et dépendante de la vitesse, programmes de direction spéciaux pour les différents modes de déplacement.
<b>Freins</b>	Freins de service: servofrein à air comprimé, tous les essieux sont munis de freins à disque, à 2 circuits. Frein à main: par cylindres à ressorts, agissant sur les roues des essieux 1, 2 et 3. Frein à régime continu: Ralentisseur sur échappement avec système de freinage additionnel Liebherr.
<b>Cabine</b>	Spacieuse cabine, traitement anticorrosion, équipement «grand confort», suspension par silentblochs, vitrage de sécurité.
<b>Installation électrique</b>	Technique moderne de transmission de données par BUS de données, courant continu 24 Volts.

## Partie tournante

<b>Cadre</b>	Fabrication Liebherr, construction mécano-soudée en tôle d'acier à haute résistance à grains fins. Couronne d'orientation à 1 rangée de billes.
<b>Entraînement</b>	Diesel hydraulique avec 1 pompe double à débit variable et régulation de puissance automatique, 1 pompe à engrenages double, entraînés par le moteur Diesel du porteur, circuits hydrauliques ouverts avec «load sensing», régulé électriquement. 4 mouvements simultanés praticables.
<b>Commande</b>	Commande électrique des mécanismes par leviers de manoeuvre à centrage automatique, commandes de grue „grand confort“ intégrées aux accoudoirs du siège, Liebherr système bus.
<b>Mécanisme de levage</b>	Moteur hydraulique à cylindrée constante, treuil à réducteur planétaire incorporé et frein d'arrêt à ressort, en circuit hydraulique ouvert ou fermé et régulé.
<b>Mécanisme de relevage</b>	1 vérin différentiel avec clapet de frein commandé.
<b>Dispositif de rotation</b>	Moteur à cylindrée constante à pistons axiaux, engrenage planétaire, frein d'arrêt commandé par ressort. Orientation de série commutable en circuit hydraulique ouvert ou fermé (freinage automatique ou au pied).
<b>Cabine de grue</b>	Large champ de vision, vitrage de sécurité, équipement pour un confort idéal, cabine inclinable de 20° vers l'arrière.
<b>Dispositif de sécurité</b>	Contrôleur de charge LICCON2, fin de course crochet haut, clapets de sécurité en cas de ruptures de flexibles. Système de test pour faciliter l'entretien.
<b>Flèche télescopique</b>	1 élément de base et 5 éléments télescopiques. Chaque élément télescopable indépendamment de l'autre. Système de télescopage TELEMATIK séquentiel rapide. Longueur de flèche: 34 ft - 157 ft.
<b>Contrepoids</b>	12,100 lb
<b>Installation électrique</b>	Technique moderne de transmission de données par BUS de données, courant continu 24 Volts.

## Équipement supplémentaire

<b>K</b>	Fléchette pliante simple, longueur 31 ft Double fléchette pliante 31 ft - 52 ft Réglage mécanique à 0°, 20°, 40°
<b>K</b>	Fléchette de montage 8 ft
<b>2ème mécanisme de levage</b>	Pour l'utilisation du deuxième crochet, ou bien pour une utilisation avec fléchette pliante lorsque le câble de levage principal rest moufle.
<b>Contrepoids additionnel</b>	16,100 lb pour un contrepoids total de 28,200 lb.
<b>Pneumatiques</b>	6 roues. Taille: 525/80 R 25 (20.5 R 25).
<b>Entraînement 6 x 6</b>	Essieu 1 est entraîné additionnellement.

**Autres équipements supplémentaires sur demande.**

# Description of symbols

## Explication des symboles



**Max. capacity**  
Capacité max.



**Outriggers front**  
Calage avant



**Radius**  
Portée



**Max. hoist height**  
Hauteur de levage max.



**Outriggers rear**  
Calage arrière



**Telescopic boom**  
Flèche télescopique



**Max. radius**  
Portée max.



**Crane superstructure**  
Partie tournante de la grue



**Swing away jib**  
Fléchette pliante



**Tyres**  
Pneumatiques



**infinitely variable**  
en continu



**Assembly jib**  
Fléchette de montage



**Hookblock/Capacity**  
Moufle à crochet/Capacité de charge



**Rope diameter**  
Diamètre



**No. of sheaves**  
Poulies



**Rope length**  
Longueur du câble



**No. of lines**  
Brins



**Max. single line pull**  
Effort au brin maxi.



**Weight**  
Poids



**Hoist gear**  
Treuil de levage



**Crane carrier**  
Châssis porteur



**Slewing speeds**  
Vitesses d'orientation



**Driving speed**  
Vitesse de translation



**Boom length**  
Longueur de la flèche



**Gradability**  
Aptitude à gravir les pentes



**Boom position**  
Position de la flèche



**Transmission**  
Boîte de vitesse



**Counterweight**  
Contrepoids



**Gear**  
Vitesse



**Outriggers**  
Calage



**Onroad gear**  
Vitesse de route



**Outriggers - free on tyres**  
Calage - libre sur pneus



**Crawl speed**  
Marche lente



**Slewing gear / Working area**  
Mécanisme d'orientation / Plage de travail



**Max. supporting forces**  
Forces d'appui max.



**Standard**  
Norme

## Remarks

1. The lifting capacities do not exceed 85 % of the tipping load according to ASME B 30.5. The crane's structural steelwork is in accordance with EN 13000 and ASME B 30.5.
2. For the calculation of the load charts at least a wind speed of 30 ft/s (9 m/s, 20 mph) and regarding the load a sail area of 1 m<sup>2</sup> per ton load and a wind resistance coefficient of 1.2 on the load have been taken into account. For lifting of loads with large sail areas and/or high wind resistance coefficients the maximum wind speed as stated in the load charts has to be reduced.
3. The lifting capacities stated are valid for lifting operation only (corresponding with crane classification according to ISO 4301-1, crane group A1).
4. Lifting capacities are given in kip.
5. The weight of the hook blocks and hooks is part of the load and therefore it must be deducted from the lifting capacities.
6. Working radii are measured from the slewing center.
7. The stated lengths of the telescopic boom are maximum values and may deviate slightly.
8. The lifting capacities given for the telescopic boom apply if the folding jib is removed.
9. Subject to modification of lifting capacities.
10. Lifting capacities above 93,300 lb only with additional pulley block.
11. The data of this brochure serves only for general information. All information is provided without warranty. Instructions for the correct commissioning of the crane please take from the operation manual and the load chart book.
12. The illustrations in this brochure may feature accessories and special equipment not included in the standard scope of delivery.

## Remarques

1. La capacité de charge ne doit pas dépasser 85 % de la charge de basculement conformément à ASME B 30.5. La structure métallique de la grue est conforme à EN 13000 et ASME B 30.5.
2. Une vitesse de vent de 30 ft/s (9 m/s, 20 mph) minimum, une surface de prise au vent de 1 m<sup>2</sup> par tonne ainsi qu'un coefficient de résistance au vent de la charge 1,2 sont pris en compte pour le calcul des tableaux de charge. Lorsque des charges ayant une surface de prise au vent et/ou un coefficient de résistance au vent plus élevé(e)(s) sont levées, la vitesse de vent maximale indiquée dans les tableaux de charge doit être réduite.
3. Forces de levage pour application de grue de montage (correspond à la classification de grues selon ISO 4301-1, groupe de grues A1).
4. Les charges sont indiquées en kip.
5. Le poids du crochet de levage resp. de la moufle à crochet est une partie de la charge et doit donc être déduit de la capacité de charge.
6. Les portées sont calculées à partir de l'axe de rotation.
7. Les longueurs indiquées pour la flèche télescopique sont des valeurs maximales et peuvent légèrement varier dans la réalité.
8. Les charges indiquées pour la flèche télescopique sont valables lorsque la fléchette pliante est démontée.
9. Charges données sous réserve de modification.
10. Forces de levage plus de 93,300 lb seulement avec moufle additionnel.
11. Les données de cette brochure sont données à titre informatif. Ces renseignements sont sans garantie. Les consignes relatives à la bonne mise en service de la grue sont disponibles dans le manuel d'utilisation et le manuel de tableaux de charge.
12. Les figures contiennent également des accessoires et des équipements spéciaux non inclus de série dans la livraison.

# Customer Service

Personal. Competent. Reliable.  
Personnalisé. Compétent. Fiable.



To ensure your Liebherr remains a Liebherr.

- Commission and training by experienced service technicians
- Worldwide service network with over 80 branches
- 24/7 technical support worldwide
- Fast availability of spare parts
- Attractive packages for maintenance and service

De sorte que votre Liebherr reste une Liebherr.

- Mise en route et formation effectuées par des techniciens qualifiés
- Service-Après-Vente Mondial représenté par plus de 80 correspondants
- Assistance Technique 24/24 et 7/7 jours
- Rapide disponibilité des pièces de rechanges
- Kits d'entretiens pour révisions et maintenances à un prix attractif

## Proposition 65



**WARNING:** This product can expose you to chemicals, including exhaust emissions, including lead and lead compounds, which are known to the State of California to cause cancer, birth defects or other reproductive harm.  
For more information see: [www.P65warnings.ca.gov/diesel](http://www.P65warnings.ca.gov/diesel)

Subject to modification · Sous réserve de modifications

Liebherr-Werk Echingen GmbH · Postfach 1361 · 89582 Echingen, Germany  
+49 73 91 5 02-0 · [www.liebherr.com](http://www.liebherr.com)

Get Your  
Contact

