

LET'S MAKE ZERO-EMISSION REAL

Edition 02/2021 © 2021 JMG Cranes S.p.A. All rights reserved
Data subject to change without prior notice
Rev. 0 - 02/2021

RentalMatch Green Power

Dealer and Maintenance partner of:

JMG Cranes North Europe

Sales & Service Office

Ecologieweg 16

3433 LM Hendrik-Ido-Ambacht - Netherlands

t +31 651855113

t +31 613214166

e info@rentalmatch.eu

Production Plant

Via Sito Nuovo 14

29010 Sarmato (PC) - Italy




RentalMatch
GREEN POWER

Electric
Pick & Carry
Cranes



MC 70S (metric)
Max Capacity 7,000 Kg

www.RentalMatch.eu

JMG[®]
movetosolution

MC 70S

RADIO-REMOTE CONTROL ON DRIVING, STEERING, BOOM MOVEMENTS, WINCH AND OTHER ACCESSORIES

FRONT-WHEELS DRIVE WITH COUNTER ROTATION

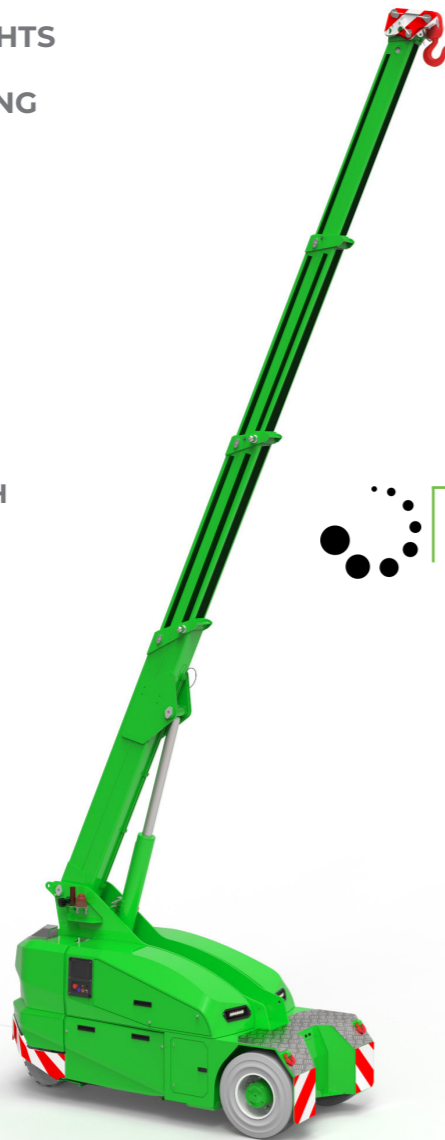
REMOVABLE COUNTERWEIGHTS

HYDRAULICALLY TELESCOPING SEQUENTIAL TYPE BOOM

TILTABLE HEAD 3 POSITIONS

Options :

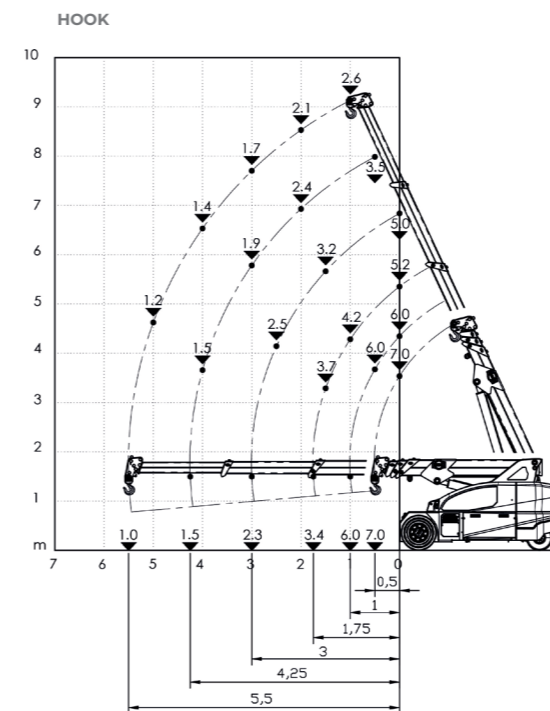
- HYDRAULIC WINCH
- HYDRAULIC FLY JIB
- BENDABLE MANUAL JIB WITH MANUAL EXTENSION
- NON-MARKING TIRES
- HYDRAULIC FORKS
- MAN BUCKET
- ATEX CONVERSIONS
- CUSTOMIZED PAINTING



Technical features

Max Capacity kg	7,000	Front-wheels drive. 2 electric motors AC 3,5 kW 72V Insulation class H	LMI. Electronic safe load indicator and tilting moment limiter
	Dimensions mm	3226x1380x1857	Automatic braking system on all wheels
Total Kg. 7700 Removable counterweights Kg.3000		72 V - 640 Ah 8 working hours	Fabricated from preformed and welded quality steel plate
	Front nr. 2 superelastic 250-15" Rear nr. 2 superelastic 21x8-9"	+65°/-10°	Motor driven pump 12 kW - 72 V AC, Insulation class H
Rear Steering angle -90°/+90°			

Load charts



EU Standards CE

	UNI ISO 4301-2: A1
	2006/42 CE-2014/30 UE-2014/35 UE- 2000/14 and subsequent modifications
	EN 13000:2014 ANSI/ASME B30.5-2011 and subsequent modifications



Dimensions

