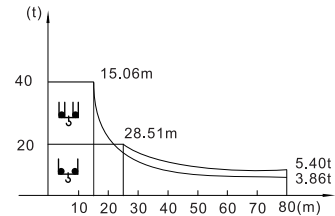


40/32t

載荷表 Load Chart 雙小車 2-trolley

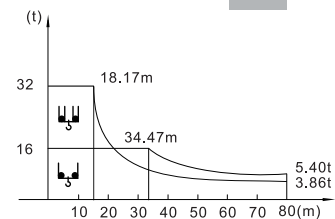
R (m)	倍率 Fall	R(Cmax) (m)	Cmax (t)	20	25	30	35	40	45	50	55	60	65	70	75	80
80	II	28.51	20.00	20.00	20.00	18.84	15.71	13.39	11.59	10.17	9.00	8.04	7.22	6.53	5.93	5.40
	IV	15.06	40.00	28.53	21.74	17.30	14.17	11.85	10.05	8.63	7.46	6.50	5.68	4.99	4.39	3.86
75	II	29.25	20.00	20.00	20.00	19.42	16.20	13.82	11.97	10.51	9.31	8.32	7.48	6.77	6.15	
	IV	15.44	40.00	29.40	22.43	17.88	14.66	12.28	10.43	8.97	7.77	6.78	5.94	5.23	4.61	
70	II	29.96	20.00	20.00	20.00	19.97	16.67	14.23	12.34	10.83	9.61	8.59	7.73	7.00		
	IV	15.80	40.00	30.25	23.10	18.43	15.13	12.69	10.80	9.29	8.07	7.05	6.19	5.46		
65	II	31.15	20.00	20.00	20.00	20.00	17.46	14.91	12.94	11.38	10.10	9.04	8.15			
	IV	16.41	40.00	31.66	24.22	19.35	15.92	13.37	11.40	9.84	8.56	7.50	6.61			
60	II	32.35	20.00	20.00	20.00	20.00	18.25	15.60	13.56	11.93	10.60	9.50				
	IV	17.02	40.00	33.08	25.34	20.28	16.71	14.06	12.02	10.39	9.06	7.96				
55	II	34.42	20.00	20.00	20.00	20.00	19.62	16.79	14.61	12.87	11.46					
	IV	18.08	40.00	35.53	27.28	21.88	18.08	15.25	13.07	11.33	9.92					
50	II	34.70	20.00	20.00	20.00	20.00	19.80	16.95	14.75	13.00						
	IV	18.22	40.00	35.86	27.54	22.10	18.26	15.41	13.21	11.46						
40	II	35.10	20.00	20.00	20.00	20.00	20.00	17.18								
	IV	18.56	40.00	36.66	28.17	22.62	18.71	15.80								



40T

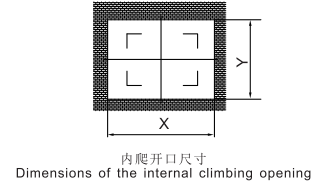
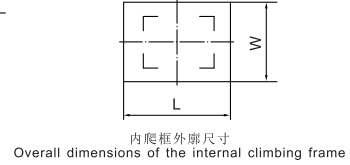
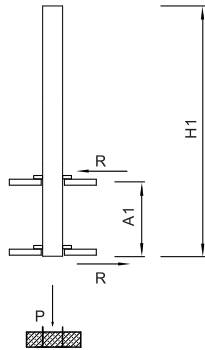
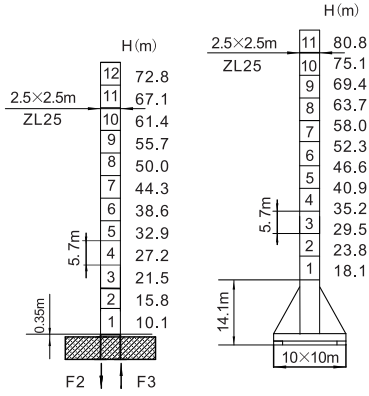
載荷表 Load Chart 雙小車 2-trolley

R (m)	倍率 Fall	R(Cmax) (m)	Cmax (t)	20	25	30	35	40	45	50	55	60	65	70	75	80
80	II	34.47	16.00	16.00	16.00	16.00	15.71	13.39	11.59	10.17	9.00	8.04	7.22	6.53	5.93	5.40
	IV	18.17	32.00	28.53	21.74	17.30	14.17	11.85	10.05	8.63	7.46	6.50	5.68	4.99	4.39	3.86
75	II	35.37	16.00	16.00	16.00	16.00	16.00	13.82	11.97	10.51	9.31	8.32	7.48	6.77	6.15	
	IV	18.63	32.00	29.40	22.43	17.88	14.66	12.28	10.43	8.97	7.77	6.78	5.94	5.23	4.61	
70	II	36.24	16.00	16.00	16.00	16.00	16.00	14.23	12.34	10.83	9.61	8.59	7.73	7.00		
	IV	19.08	32.00	30.25	23.10	18.43	15.13	12.69	10.80	9.29	8.07	7.05	6.19	5.46		
65	II	37.69	16.00	16.00	16.00	16.00	16.00	14.91	12.94	11.38	10.10	9.04	8.15			
	IV	19.82	32.00	31.66	24.22	19.35	15.92	13.37	11.40	9.84	8.56	7.50	6.61			
60	II	39.16	16.00	16.00	16.00	16.00	16.00	15.60	13.56	11.93	10.60	9.50				
	IV	20.57	32.00	32.00	25.34	20.28	16.71	14.06	12.02	10.39	9.06	7.96				
55	II	41.88	16.00	16.00	16.00	16.00	16.00	16.00	14.61	12.87	11.46					
	IV	21.86	32.00	32.00	27.28	21.88	18.08	15.25	13.07	11.33	9.92					
50	II	42.01	16.00	16.00	16.00	16.00	16.00	16.00	14.75	13.00						
	IV	22.03	32.00	32.00	27.54	22.10	18.26	15.41	13.21	11.46						
40	II	42.50	16.00	16.00	16.00	16.00	16.00	16.00								
	IV	22.45	32.00	32.00	28.17	22.62	18.71	15.80								



32T

塔身截面 Mast ZL25 反力 Reactions



	●	■
F2	342t	457t
F3	225t	368t
⚖	192t	

塔身节 Mast	H1 (m)	A1 (m)	P (t)	R (t)	X (m)	Y (m)	L (m)	W (m)
ZL25	61.2	20	230	62	3.58	2.8	3.68	3.2

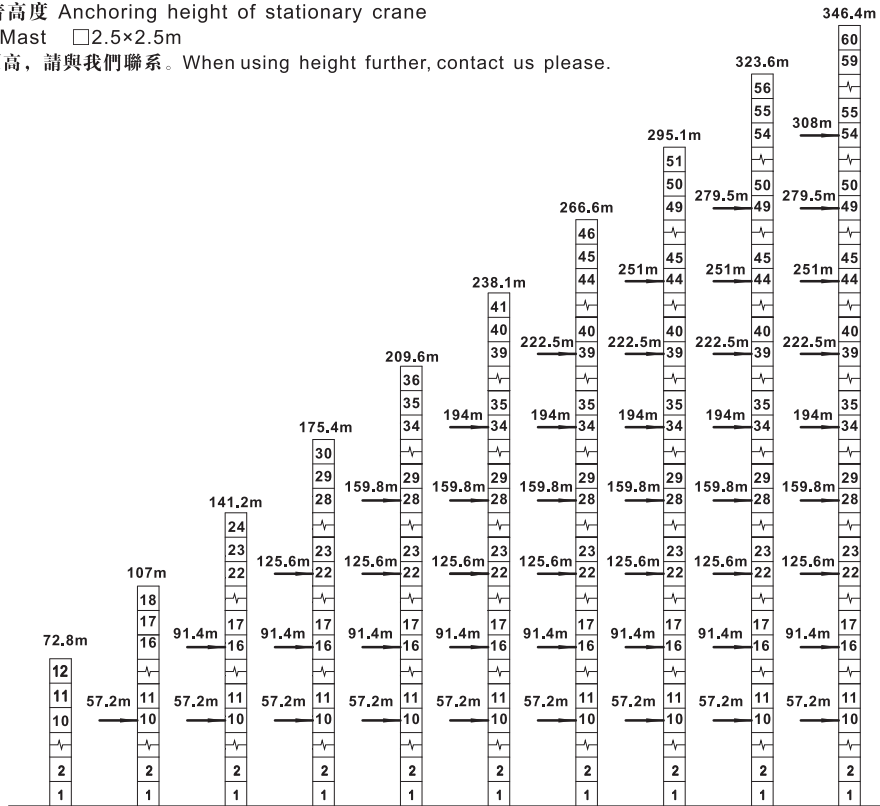
- 工作状态支反力 In service reaction
- 非工作状态支反力 Out of service reaction
- ⚖ 整机自由高度重量 (不含平衡重及压重重量) Total weight of free standing crane (excludes counter weight & ballast)

附着 Anchoring

固定式附着高度 Anchoring height of stationary crane

塔身截面 Mast □2.5×2.5m

如需達到更高, 請與我們聯系。When using height further, contact us please.



主要性能參數 Specifications

機構 Mechanism								電動機 Motor kW
			m/min	t	m/min	t		
	40t	150LVF100F	0-20 0-60 0-80	20.0 5.0 2.0	0-10 0-30 0-40	40.0 10.0 4.0	900m, >900m	110
	32t	150LVF80F	0-33 0-68 0-100	16.0 4.5 3.0	0-16 0-34 0-50	32.0 9.0 6.0	1240m	110
	18JXF20		0-56 m/min					18.5
	RVF9.0		0-0.6 rpm					3×9.0
	RT		12.5-25 m/min					4×7.5

電壓 Pressure	kVA
380V (±10%) 50Hz	205

* 與製造商聯系 Contact us, please.
 ☆ 標準配置 Standard configuration.

本技術參數不受法律約束，技術諮詢請詳見相應說明書或聯系我們。
 These specifications and data are not legally binding. For any technical information, please refer to corresponding instructions or contact us.