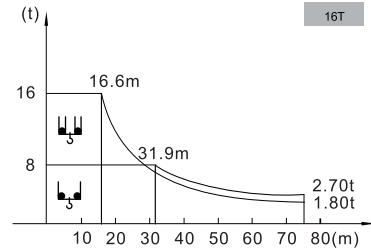
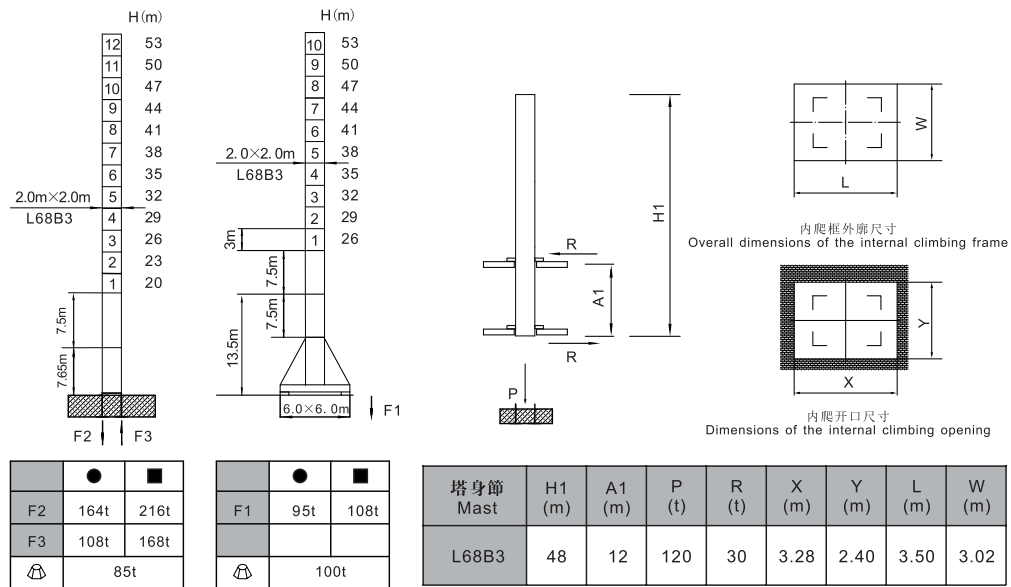


### 載荷表 Load Chart 雙小車 2-trolley

R (m)	倍率 Fall	R (Cmax) (m)	Cmax (t)	15	20	25	30	35	40	45	50	55	60	65	70	75
75	II	31.9	8.00	8.00	8.00	8.00	8.00	7.18	6.12	5.30	4.64	4.11	3.67	3.30	2.98	2.70
	IV	16.6	16.00	16.00	12.83	9.74	7.71	6.28	5.22	4.40	3.74	3.21	2.77	2.40	2.08	1.80
70	II	33.6	8.00	8.00	8.00	8.00	8.00	7.84	6.69	5.81	5.10	4.53	4.05	3.64	3.30	
	IV	17.4	16.00	16.00	14.01	10.67	8.48	6.94	5.79	4.91	4.20	3.63	3.15	2.74	2.40	
65	II	36.1	8.00	8.00	8.00	8.00	8.00	8.00	6.95	6.03	5.30	4.71	4.22	3.80		
	IV	18.7	16.00	16.00	14.53	11.08	8.83	7.23	6.05	5.13	4.40	3.81	3.32	2.90		
60	II	37.9	8.00	8.00	8.00	8.00	8.00	8.00	7.38	6.41	5.64	5.02	4.50			
	IV	19.6	16.00	16.00	15.41	11.78	9.40	7.73	6.48	5.51	4.74	4.12	3.60			
55	II	39.4	8.00	8.00	8.00	8.00	8.00	8.00	7.63	6.63	5.84	5.20				
	IV	19.8	16.00	16.00	15.92	12.19	9.74	8.01	6.73	5.73	4.94	4.30				
50	II	41.3	8.00	8.00	8.00	8.00	8.00	8.00	8.00	7.14	6.30					
	IV	21.4	16.00	16.00	16.00	13.12	10.51	8.67	7.30	6.24	5.40					
45	II	43.5	8.00	8.00	8.00	8.00	8.00	8.00	8.00	7.14						
	IV	22.5	16.00	16.00	16.00	13.12	10.51	8.67	7.30	6.24						
40	II	40.0	8.00	8.00	8.00	8.00	8.00	8.00	8.00							
	IV	23.7	16.00	16.00	16.00	13.12	10.51	8.67	7.30							
35	II	35.0	8.00	8.00	8.00	8.00	8.00	8.00								
	IV	23.7	16.00	16.00	16.00	13.12	10.51	8.67								
30	II	30.0	8.00	8.00	8.00	8.00	8.00									
	IV	23.7	16.00	16.00	16.00	13.12	10.51									



### 塔身截面 Mast L68B3 反力 Reactions



● 工作狀態支反力 In service reaction    ■ 非工作狀態支反力 Out of service reaction  
 ⚖ 整機自由高度重量 (不含平衡重及壓重重量) Total weight of free standing crane (excludes counter weight & ballast)



### 主要性能參數 Specifications

機構 Mechanism							電動機 Motor kW
		m/min	t	m/min	t		
	16t	85LVF40★	0-40 0-58 0-80	8.0 5.3 3.0	0-20 0-30 0-40	16.0 10.6 6.0	670m 65
		100LVF40B	0-40 0-80 0-120	8.0 4.0 1.25	0-20 0-40 0-60	16.0 8.0 2.5	670m 75
	BP7575X		0-60 m/min				7.5
	RVF7.5		0-0.7 rpm				7.5
	RCV145		0-0.7 rpm				2×145N·m
	RT		12.5-25 m/min				4×1.7/3.4

電壓 Pressure	kVA
380V (±10%) 50Hz	85LVF40: 116    100LVF40B: 130

\* 與製造商聯系 Contact us, please.  
 ★ 標準配置 Standard configuration.

本技術參數不受法律約束，技術諮詢請詳見相應說明書或聯系我們。  
 These specifications and data are not legally binding. For any technical information, please refer to corresponding instructions or contact us.