



CTT 561A-24 HD23

FLAT TOP TOWER CRANE



Specifications:

- ▶ Max jib length: 275.6 ft
- ▶ Capacity at max length: 4,630 lbs
- ▶ Max capacity: 52,911 lbs

WORKS FOR YOU.™



KEY

Zeichenerklärung · Légende · Leyenda · Legenda



Hoisting · Heben · Levage · Elevación · Sollevamento



Trolleying · Katzfahren · Distribution · Distribución · Traslazione carrello



Slewing · Schwenken · Orientation · Orientació · Rotazione



Travelling · Schienenfahren · Translation · Traslación · Traslazione



Directive on noise level · Richtlinie für den Schall-Leistungspegel · Directive sur le niveau acoustique · Directiva sobre el nivel acustico · Direttiva sul livello acustico



Consult us · Auf Anfrage · Nous consulter · Consultarnos · Consultateci



Power requirements · Geforderte Stromstärke · Puissance totale nécessaire · Potencia necesaria · Potenza totale richiesta



Power supply · Stromversorgung · Alimentation · Alimentación · Alimentazione



In service · In Betrieb · En service · En servicio · In servizio



Out of service · Außer Betrieb · Hors service · Fuera de servicio · Fuori servizio



Max. under hook height · Höchste Hakenhöhe · Hauteur maxi. sous crochet · Maxima altura bajo gancho · Altezza max. sotto gancio



Without load, without ballast, max. jib and max. height · Ohne Last und Ballast, mit Maximalausleger und Maximalhöhe · A vide, sans lest, avec flèche et hauteur maximum · Sin carga, sin lastre, con pluma y altura máxima · A vuoto, senza zavorra, braccio max., altezza max.



Counterweight · Gegengewicht · Lest de contre-flèche · Lastre de contra flecha · Zavorra controbraccio

C25

FEM 1004 Out of service wind condition · FEM 1004 Windverhältnisse im Außerbetriebszustand · FEM 1004 Conditions de vent hors service · FEM 1004 Condiciones de viento fuera de servicio · FEM 1004 Condizioni del vento in fuori servizio



TEREX®



FEM



CONTENTS

CTT 561A-24 HD23

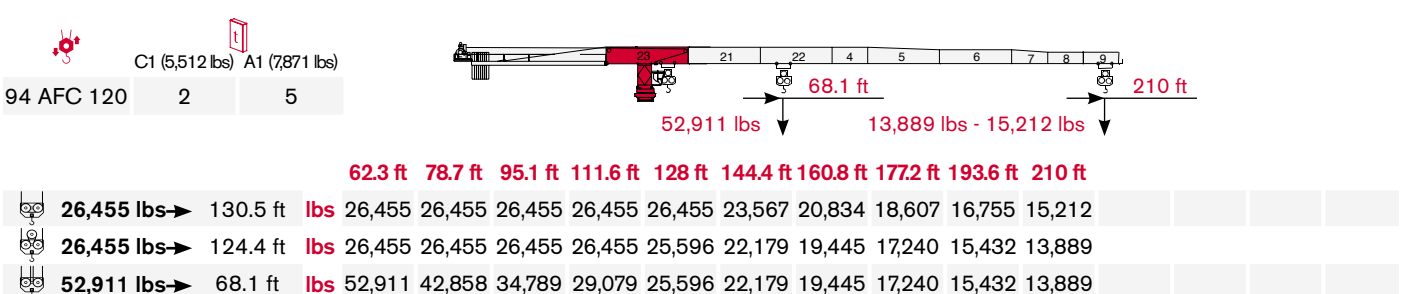
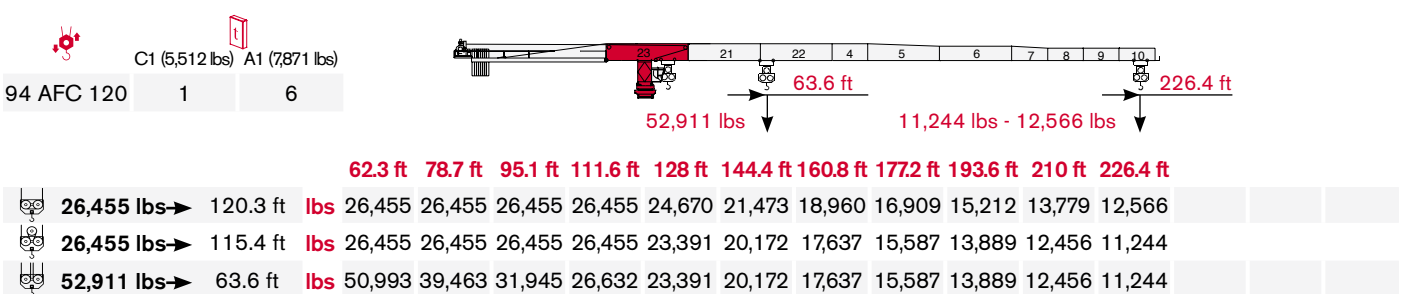
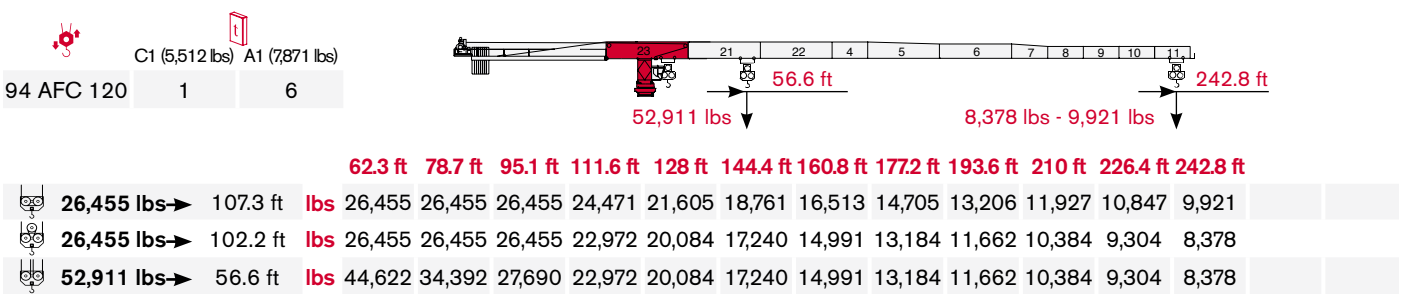
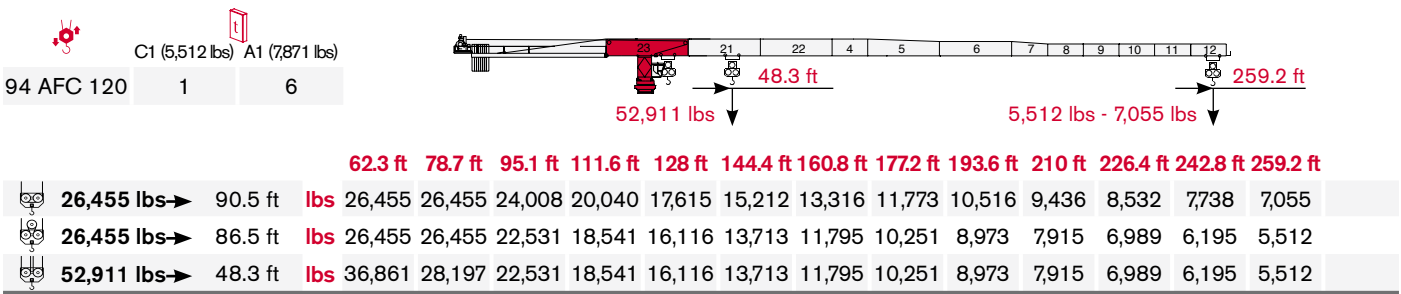
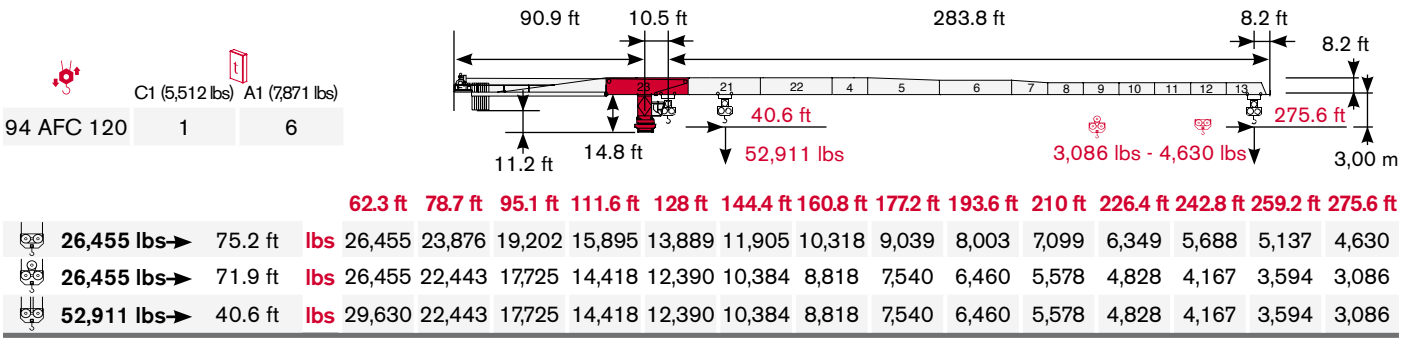
Inhalt • Contenu • Contenido • Indice

Page • Seite • Page • Pàgina • Pagina:

Load Diagram • Lastkurven • Courbes de charges • Curvas de cargas • Diagramma di portata	4
Tower • Turm • Tour • Torre • Torre	6
Other configurations • Aufstellmöglichkeiten • Autres Implantations	
Otras Implantaciones • Altre Installazioni	8
Mechanisms • Antriebe • Mécanismes • Mecanismos • Meccanismi	9
Transportation • Transport • Transportation • Transportation • Trasporto	11

LOAD DIAGRAM

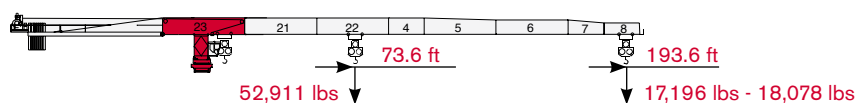
Lastkurven · Courbes de charges · Curvas de cargas · Diagramma di portata



CTT 561A-24 HD23


 C1 (5,512 lbs) A1 (7,871 lbs)

94 AFC 120	4	3
------------	---	---

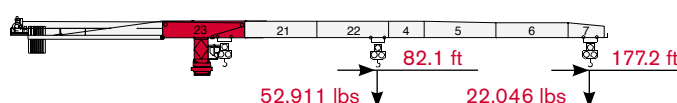


62.3 ft 78.7 ft 95.1 ft 111.6 ft 128 ft 144.4 ft 160.8 ft 177.2 ft 193.6 ft

	26,455 lbs➡	139 ft	lbs	26,455	26,455	26,455	26,455	26,455	25,353	22,421	20,040	18,078				
	26,455 lbs➡	135.1 ft	lbs	26,455	26,455	26,455	26,455	26,455	24,493	21,539	19,158	17,196				
	52,911 lbs➡	73.6 ft	lbs	52,911	46,848	38,118	31,945	28,197	24,493	21,539	19,158	17,196				


 C1 (5,512 lbs) A1 (7,871 lbs)

94 AFC 120	0	6
------------	---	---

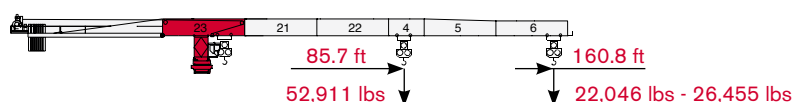


62.3 ft 78.7 ft 95.1 ft 111.6 ft 128 ft 144.4 ft 160.8 ft 177.2 ft

	26,455 lbs	→	156.2 ft	lbs	26,455	26,455	26,455	26,455	26,455	26,455	25,596	22,928					
	26,455 lbs	→	151.5 ft	lbs	26,455	26,455	26,455	26,455	26,455	26,455	24,714	22,046					
	52,911 lbs	→	82.1 ft	lbs	52,911	52,911	43,211	36,332	32,121	27,977	24,714	22,046					


 C1 (5,512 lbs) A1 (7,871 lbs)

94 AFC 120	2	4
------------	---	---

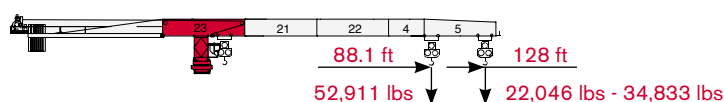


62.3 ft 78.7 ft 95.1 ft 111.6 ft 128 ft 144.4 ft 160.8 ft

	26,455 lbs	→	158.4 ft	lbs	26,455	26,455	26,455	26,455	26,455	26,455	26,015						
	52,911 lbs	→	85.7 ft	lbs	52,911	52,911	45,371	38,184	33,775	29,454	26,015						

 C1 (5,512 lbs) A1 (7,871 lbs)

94 AFC 120	2	3
------------	---	---



62.3 ft 78.7 ft 95.1 ft 111.6 ft 128 ft


	26,455 lbs	→	128 ft	lbs	26,455	26,455	26,455	26,455	26,455								
	52,911 lbs	→	88.1 ft	lbs	52,911	52,911	46,738	39,353	34,833								

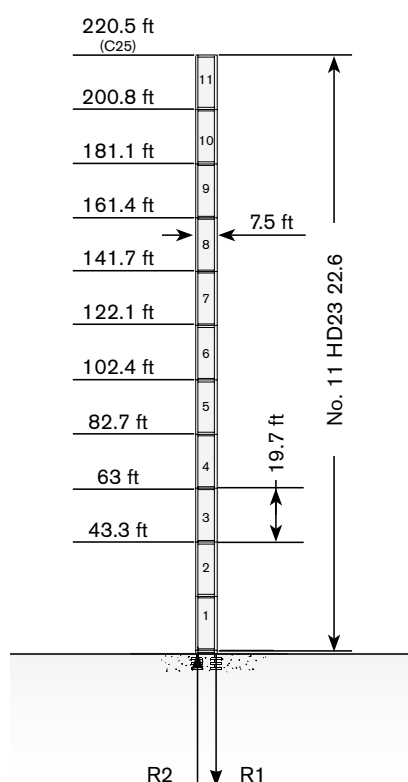
TOWER

Turn • Tour • Torre • Torre


Standard Configurations • Standardkonfiguration •
Standard Implantations • Implantaciones Standard • Installazioni Standard

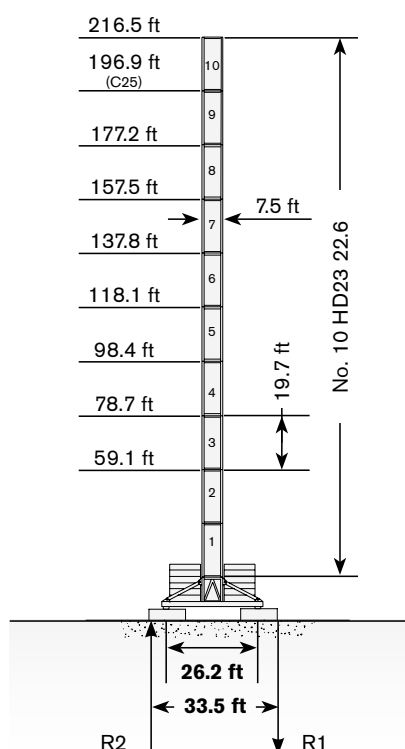
Tower: HD23 & Basement: R1

	●	◊
R1	-3600 kN	-3779 kN
R2	2773 kN	3080 kN
	1146 kN	




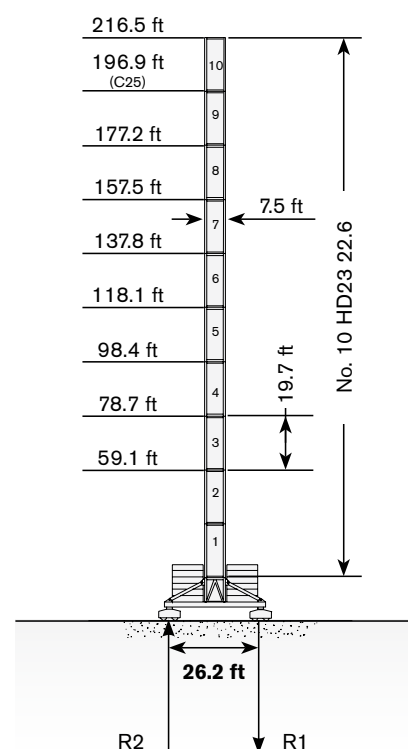
Tower: HD23 & Basement: FP1

	●	◊
R1	-1557 kN	-1574 kN
R2	0 kN	0 kN
	1625 kN	



Tower: HD23 & Basement: T1

	●	◊
R1	-1808 kN	-1317 kN
R2	0 kN	0 kN
	1296 kN	



Max. under hook height • Höchste Hakenhöhe • Hauteur maxi. sous crochet • Maxima altura bajo gancho • Altezza max. sotto gancio

Different heights and tower combinations are available; please consult us • Andere Höhen und Turmkombinationen auf Anfrage • Différentes hauteurs et combinaisons de tour sont disponibles; nous consulter • Hay diferentes alturas y combinaciones de torre disponibles. Consúltelos • Altezze diverse e combinazioni di torre sono disponibili; consultateci



TEREX®



BIGGE

TOWER

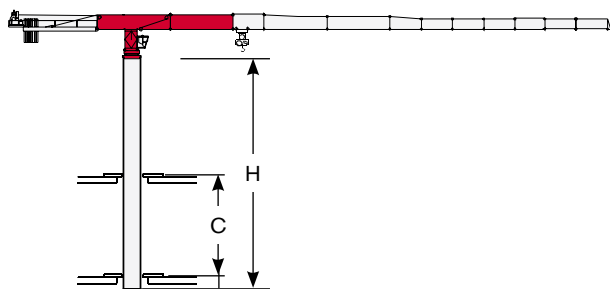
Turn · Tour · Torre · Torre

Other configurations · Aufstellmöglichkeiten ·

Autres Implantations · Otras Implantaciones · Altre Installazioni

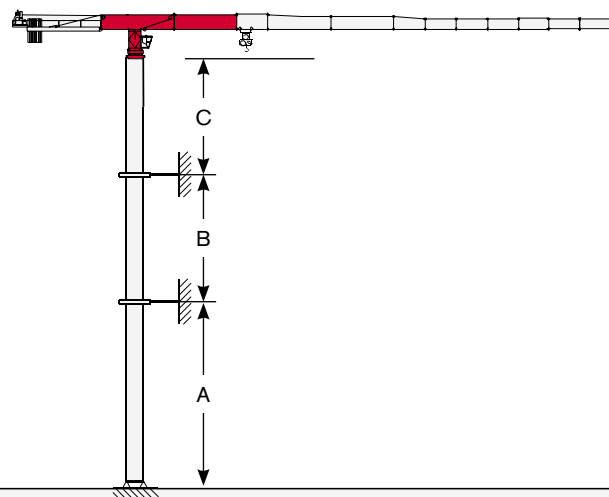
Bottom climbing crane · Kletterkran im Gebäude · Télescopage sur dalles · Telescopage grúa trepadora · Gru climbing

Crane tied to the structure · Geankerter Kran · Grue ancrée · Grúa anclada · Gru ancorata



Tower: HD23-22

C min	H max
39.4 ft	118.1 ft
45.9 ft	137.8 ft
52.5 ft	157.5 ft



Tower: HD23 & Basement: R1

	min	max
A	118.1 ft	196.9 ft
B	78.7 ft	137.8 ft
C	137.8 ft	

Tower: HD23 & Basement: R2

	min	max
A	118.1 ft	236.2 ft
B	78.7 ft	137.8 ft
C	137.8 ft	



TEREX®





MECHANISMS

CTT 561A-24 HD23

Antriebe · Mécanismes · Mecanismos · Meccanismi

Power supply · Stromversorgung ·

Alimentation · Suministro eléctrico · Alimentazione

				
	94 AFC 120 D2	196 kVA*	400V - 50Hz / 460V - 60Hz	2000/14/CE modificata

* Crane without travelling equipment – Three movements simultaneous at 90% · Krane ohne Schienenfahren – Drei gleichzeitige Bewegungen mit 90% · Grue sans translation – Trois mouvements simultanés à 90% · Grúa sin traslación – Tres movimientos contemporáneos hechos al 90% · Gru senza traslazione – Tre movimenti contemporanei al 90%

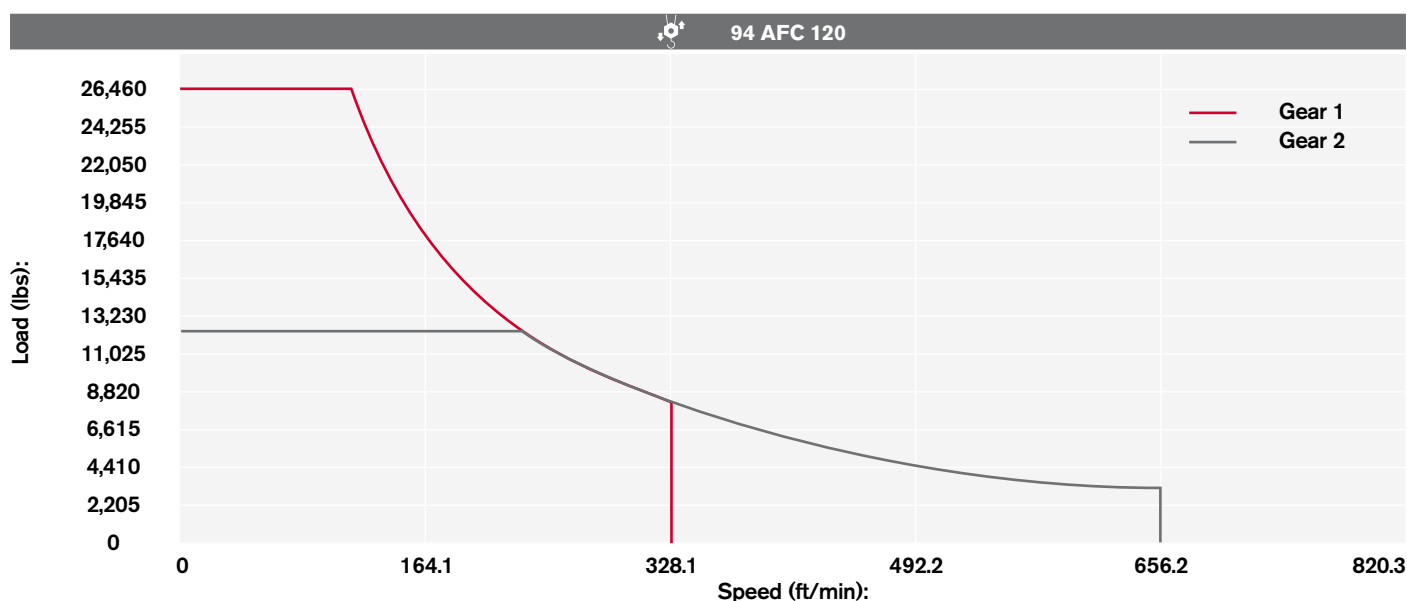
Hoisting · Heben · Levage · Elevación · Sollevamento

			lbs	ft/min		kW	
	94 AFC 120 D2 (Vector 2)		26,455	0 ➔ 114.8	1°	94	2,362.3 ft
			7,937	0 ➔ 328.1			
			12,346	0 ➔ 226.4	2°		
			3,086	0 ➔ 656.2			
			26,455	0 ➔ 55.8	1°		
			15,873	0 ➔ 164.1			
			24,692	0 ➔ 114.8	2°		
			6,173	0 ➔ 328.1			



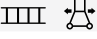
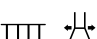
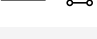
MECHANISMS


Antriebe · Mécanismes · Mecanismos · Meccanismi

Hoisting Speed · Heben Geschwindigkeit · Vitesse de Levage ·
Velocidad de Elevación · Velocità' di Sollevamento

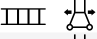


Additional Specifications · Weitere Leistungsdaten ·
Spécifications additionnelles · Otras prestaciones · Altre movimentazioni

	DVF 5 11	0 → 328.1 ft/min	11 kW
	SSR 4 4 80	0.73 r.p.m.	4 x 59 ft·lb
	TVF 2RG 4M9 D1	0 → 78.7 ft/min	4 x 9 kw
	TSR 2RG 4M8	39.4 → 78.7 ft/min (50 Hz) 45.9 → 91.9 ft/min (60 Hz)	4 x 59 ft·lb
	TSR 4RG 4M8	39.4 → 78.7 ft/min (50 Hz) 45.9 → 91.9 ft/min (60 Hz)	4 x 59 ft·lb

 **i**

Tower height max.

		T1	T6
	TVF 2RG 4M9 D1	157.5 ft	157.5 ft
	TSR 2RG 4M8	157.5 ft	157.5 ft
	TSR 4RG 4M8	> 157.5 ft	> 157.5 ft



TEREX®



TRANSPORTATION

CTT 561A-24 HD23

Transport · Transport · Conducción · Trasporto

Packing list

CTT 561A -24 HD23	DESCRIPTION · BESCHREIBUNG · DESCRIPTION · DESCRIPCIÓN · DESCRIZIONE	LENGTH · LÄNGE · LONGUEUR · LONGITUD · LUNGHEZZA	WIDTH · BREITE · LARGEUR · ANCHURA · LARGHEZZA	HEIGHT · HÖHE · HAUTEUR · ALTURA · ALTEZZA	QUANTITY · MENGE · QUANTITÉ · CANTIDAD · CANTITÀ	WEIGHT · GEWICHT · POIDS · PESO · PESO
	8x8 m UNDERCARRIAGE STRUT MOUNTING TOWER SECTION	9.5 ft	9.5 ft	9.5 ft	1	20,176 lbs
	8x8 m UNDERCARRIAGE STRUT	14.1 ft	1 ft	7.4 ft	4	4,013 lbs
	8x8 m UNDERCARRIAGE INTERNAL BEAM	13.1 ft	0.5 ft	1.1 ft	4	463 lbs
	8x8 m UNDERCARRIAGE EXTERNAL BEAM	19.6 ft	1 ft	1.1 ft	4	1,380 lbs
	10x10 m UNDERCARRIAGE STRUT MOUNTING TOWER SECTION	9.8 ft	9.8 ft	10.2 ft	1	23,042 lbs
	10x10 m LEFT + RIGHT UNDERCARRIAGE STRUT	18.7 ft	8.5 ft	2.3 ft	2 left + 2 right	8,434 lbs
	CROSSBEAM FOR TRAVELLING 10x10 m UNDERCARRIAGE	23 ft	7.2 ft	1.3 ft	2	4,476 lbs
	10x10 m UNDERCARRIAGE ELECTRICAL BOX SUPPORT PLATFORM FOR TVF 4RT 4M9 TRAVELLING DRIVE UNIT	18.7 ft	7.2 ft	7.9 ft	1	2,867 lbs
	10x10 m UNDERCARRIAGE ELECTRICAL BOX SUPPORT PLATFORM FOR TSR 4RG 4M8 TRAVELLING DRIVE UNIT	18.4 ft	6.9 ft	12.1 ft	1	1,422 lbs
	TOWER SECTION HD23 26.6	19.7 ft	8 ft	7.6 ft	1	14,273 lbs*
	TOWER SECTION HD23 22.6	19.7 ft	7.5 ft	7.5 ft	1	10,635 lbs*
	TOWER SECTION HD23 22.3	9.8 ft	7.5 ft	7.5 ft	1	5,623 lbs*
	SLEWING UNIT	9.7 ft	7.6 ft	7.3 ft	1	25,358 lbs

* inclusive of ladders, platforms and assembly equipment

** inclusive of tie-bars and safety rails

*** inclusive of trolley winch and accessories



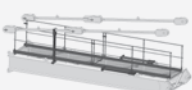
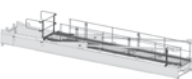









**** ballast plates not included

WORKS FOR YOU.™



TRANSPORTATION

Transport • Transport • Conducción • Trasporto

CTT 561A -24 HD23	DESCRIPTION · BESCHREIBUNG · DESCRIPTION · DESCRIPCIÓN · DESCRIZIONE	LENGTH · LÄNGE · LONGUEUR · LONGITUD · LUNGHEZZA	WIDTH · BREITE · LARGEUR · ANCHURA · LARGHEZZA	HEIGHT · HÖHE · HAUTEUR · ALTURA · ALTEZZA	QUANTITY · MENGE · QUANTITÉ · CANTIDAD · QUANTITÀ	WEIGHT · GEWICHT · POIDS · PESO · PESO
	CAB SUPPORT PLATFORM	18.2 ft	6.1 ft	8.8 ft	1	4,410 lbs
	CAB TOWER SECTION	6.2 ft	8.2 ft	10.6 ft	1	6,725 lbs
	COUNTERJIB "1C"	23.5 ft	6.5 ft	2.8 ft	1	8,710 lbs**
	COUNTERJIB "3C"	38.3 ft	7.3 ft	3.6 ft	1	12,789 lbs**
	JIB SECTION-23 23TT19 23.12	39.4 ft	8.3 ft	8.3 ft	1	24,255 lbs***
	JIB TROLLEY 20-24 t	7.8 ft	7.5 ft	4.8 ft	1	1,687 lbs
	JIB SECTION-21 21TT19 23.10	33.8 ft	6.1 ft	8.3 ft	1	10,805 lbs
	JIB SECTION-22 22TT19 23.10	33.9 ft	6.1 ft	8.2 ft	1	8,820 lbs
	JIB SECTION-04 TT19 23.05	16.4 ft	6.1 ft	8.2 ft	1	3,969 lbs
	JIB SECTION-05 TT19 23.10	32.8 ft	6.1 ft	8.2 ft	1	5,954 lbs
	JIB SECTION-06 TT19 20.10	33.8 ft	6.1 ft	7.2 ft	1	4,256 lbs
	JIB SECTION-07 TT1920.05	17.3 ft	6.1 ft	7.2 ft	1	1,985 lbs
	JIB SECTION-08 TT1917.05	17.2 ft	6.1 ft	6.1 ft	1	1,720 lbs

* inclusive of ladders, platforms and assembly equipment

** inclusive of tie-bars and safety rails

*** inclusive of trolley winch and accessories

**** ballast plates not included



TEREX®



CTT 561A-24 HD23

CTT 561A -24 HD23	DESCRIPTION · BESCHREIBUNG · DESCRIPTION · DESCRIPCIÓN · DESCRIZIONE	LENGTH · LÄNGE · LONGUEUR · LONGITUD · LUNGHEZZA	WIDTH · BREITE · LARGEUR · ANCHURA · LARGHEZZA	HEIGHT · HÖHE · HAUTEUR · ALTURA · ALTEZZA	QUANTITY · MENGE · QUANTITÉ · CANTIDAD · QUANTITÀ	WEIGHT · GEWICHT · POIDS · PESO · PESO
	JIB SECTION-09 TT1917.05	17.1 ft	6.1 ft	6.1 ft	1	2,073 lbs
	JIB SECTION-10 TT1917.05	17 ft	6.1 ft	6.1 ft	1	1,147 lbs
	JIB SECTION-11 TT1917.05	16.9 ft	6.1 ft	6.1 ft	1	997 lbs
	JIB SECTION-12 TT1917.05	16.9 ft	6.1 ft	5.8 ft	1	838 lbs
	JIB SECTION-13 TT1917.05	16.9 ft	6.1 ft	5.8 ft	1	717 lbs
	JIB POINT 20/24 t	7 ft	3.9 ft	5.3 ft	1	595 lbs
	4-PART LINE HOIST BLOCK 20-24 t	5.2 ft	2 ft	5.4 ft	1	1,863 lbs****
	HOIST WINCH 94 AFC 120 D2 (VECTOR 2) (without rope)	15 ft	8.4 ft	8.2 ft	1	15,545 lbs

NOTES

Notizen · Note · Apunte · Appunti



TEREX®



This image shows a single sheet of white paper with horizontal ruling lines. The lines are evenly spaced and run across the width of the page. There are no margins, text, or other markings on the paper.

www.terexcranes.com

Effective Date: June 2010.

Product specifications and prices are subject to change without notice or obligation. The photographs and/or drawings in this document are for illustrative purposes only. Refer to the appropriate Operator's Manual for instructions on the proper use of this equipment. Failure to follow the appropriate Operator's Manual when using our equipment or to otherwise act irresponsibly may result in serious injury or death. The only warranty applicable to our equipment is the standard written warranty applicable to the particular product and sale and Terex makes no other warranty, express or implied. Products and services listed may be trademarks, service marks or trade-names of Terex Corporation and/or its subsidiaries in the USA and other countries. All rights are reserved. Terex® is a registered trademark of Terex Corporation in the USA and many other countries.

Gültig ab: Juni 2010.

Produktbeschreibungen und Preise können jederzeit und ohne Verpflichtung zur Ankündigung geändert werden. Die in diesem Dokument enthaltenen Fotos und/oder Zeichnungen dienen rein anschaulichen Zwecken. Anweisungen zur ordnungsgemäßen Verwendung dieser Ausrüstung entnehmen Sie bitte dem zugehörigen Betriebshandbuch. Nichtbefolgung des Betriebshandbuchs bei der Verwendung unserer Produkte oder anderweitig fahrlässiges Verhalten kann zu schwerwiegenden Verletzungen oder Tod führen. Für dieses Produkt wird ausschließlich die entsprechende, schriftlich niedergelegte Standardgarantie gewährt. Terex leistet keinerlei darüber hinaus gehende Garantie, weder ausdrücklich noch stillschweigend. Die Bezeichnungen der aufgeführten Produkte und Leistungen sind gegebenenfalls Marken, Servicemarken oder Handelsnamen der Terex Corporation und/oder ihrer Tochtergesellschaften in den USA und anderen Ländern. Alle Rechte vorbehalten. „TEREX“ ist eine eingetragene Marke der Terex Corporation in den USA und vielen anderen Ländern.

Date d'effet : Juin 2010.

Les spécifications et prix des produits sont sujets à modification sans avis ou obligation. Les photographies et/ou dessins contenus dans ce document sont uniquement pour illustration. Veuillez vous référer à la notice d'utilisation appropriée pour les instructions quant à l'utilisation correcte de cet équipement. Tout manquement au suivi de la notice d'utilisation appropriée lors de l'utilisation de notre équipement ou tout acte autrement irresponsable peut résulter en blessure corporelle sérieuse ou mortelle. La seule garantie applicable à notre équipement est la garantie standard écrite applicable à un produit et à une vente spécifique. Terex n'offre aucune autre garantie, expresse ou explicite. Les produits et services proposés peuvent être des marques de fabrique, des marques de service ou des appellations commerciales de Terex Corporation et/ou ses filiales aux Etats Unis et dans les autres pays, et tous les droits sont réservés. «TEREX» est une marque déposée de Terex Corporation aux Etats Unis et dans de nombreux autres pays.

Fecha efectiva: Junio 2010.

Los precios y las especificaciones de productos pueden sufrir cambios sin aviso previo u obligación. Las fotografías o dibujos de este documento tienen un fin meramente ilustrativo. Consulte el manual de instrucciones del operador correspondiente para más información sobre el uso correcto de este equipo. El hecho de no respetar el manual del operador correspondiente al utilizar el equipo o actuar de forma irresponsable puede suponer lesiones graves o fatales. La única garantía aplicable a nuestro equipo es la garantía escrita estándar correspondiente a cada producto y venta, y TEREX no amplía dicha garantía de forma expresa o implícita. Los productos y servicios mencionados pueden ser marcas registradas, marcas de servicio o nombres de marca de TEREX Corporation o de sus filiales en Estados Unidos de América y otros países, y se reservan todos los derechos. „TEREX“ es una marca comercial registrada de Terex Corporation en Estados Unidos de América y muchos otros países.

Data di inizio validità: Giugno 2010.

Ci riserviamo il diritto di modificare le specifiche e i prezzi dei prodotti in ogni momento e senza preavviso. Le fotografie e/o i disegni contenuti in questo documento sono destinati unicamente a scopi illustrativi. Consultare le istruzioni sull'uso corretto di questo macchinario, contenute nell'opportuno Manuale dell'operatore. L'inottemperanza delle istruzioni contenute nel Manuale dell'operatore del macchinario e altri comportamenti irresponsabili possono provocare gravi lesioni, anche mortali. L'unica garanzia applicabile ai nostri macchinari è la garanzia scritta standard applicabile al particolare prodotto e alla particolare vendita; Terex è esonerata dal fornire qualsiasi altra garanzia, esplicita o implicita. I prodotti e servizi elencati possono essere dei marchi di fabbrica, marchi di servizio o nomi commerciali di TEREX Corporation e/o società affiliate negli Stati Uniti d'America e altre nazioni e tutti i diritti sono riservati. „TEREX“ è un marchio registrato di Terex Corporation negli USA e molti altri Paesi.

Copyright 2010 Terex Corporation

Terex Cranes, Global Marketing, Dinglerstraße 24, 66482 Zweibrücken, Germany
Tel. +49 (0) 6332 830, Email: info.cranes@terex.com, www.terexcranes.com

Brochure Reference: TC-DS-IMP-E/F/G/I/S-CTT561A-24 HD23-06/10



WORKS FOR YOU.™