



# CE TELESCOPIC 750

**75 U.S. ton | 70 metric ton  
Telescopic Crawler Crane**

- 121 ft (36.9 m) maximum main boom tip height
- Four section full power boom
- Remarkable control, reliability & capacity performance
- Unbeatable hydraulic pilot-operated controls
- Goes places other cranes can't
- Spacious cab
- Quick mobilization - transports in one or two loads

**Link-Belt**  
C R A N E S

# 750

75 U.S. ton | 70 metric ton  
Telescopic Crawler Crane



## Ergonomically designed for maximum visibility, comfort and control

- State of the art rated capacity limiter
- Sliding left side door
- AM/FM radio
- Air conditioner / hot water heater
- Hand and foot throttle
- Travel pedals
- Joystick controls – single axis optional

## Remarkable control, reliability and capacity performance

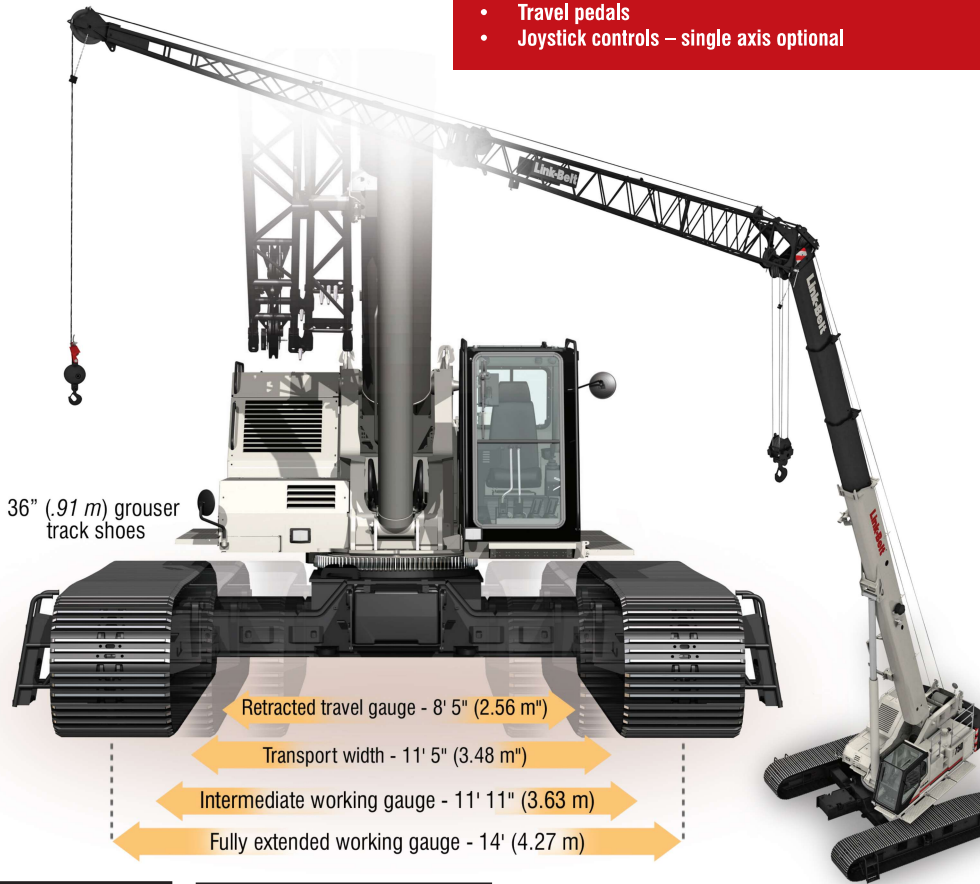
- Diesel powered by **Cummins QSB** current EPA compliant 250 hp (186 kW)
- Variable displacement piston type main pumps with **total horsepower control**
- Main hoist's powered through piston motors & winch planetary drums grooved for 3/4" (19mm) wire rope with 16,880 lbs (7 656.6 kg) available **line pull**
- 460 fpm (140.2 m/min) **line speed**
- **Mechanical drum rotation indicators**

## Full power boom with attachment flexibility

- **Full power** 38 ft to 115 ft (11.58 m to 35.05 m) four-section boom
- Two boom extend modes: Exclusive **A-max** mode offers substantially increased capacities in close. Standard **mode** extends all four sections equally.
- **Maximum boom/fly length** is 115 ft + 58 ft (35.05 m + 17.7 m) = **maximum total attachment height** 179 ft (54.6 m)
- Lightweight **nylon head sheaves** reduce overall machine weight and increase lift capacities
- **Quick reeve boom head** with quick reeve block allows rope to be easily reeved over boom head
- **Hammerhead boom nose** allows operator to work at high boom angles
- **Auxiliary sheave** off main boom
- Fixed work platform mounting lugs
- Optional 20 ft to 58 ft (6.09 m to 17.67 m) **two-piece on-board lattice fly** with 2°, 15°, 30° and 45° offsets
- **Greaseless boom wear pads**
- Optional auger-ready package

## Quick mobilization & superb job-site mobility

- Transports **COMPLETE IN ONE OR TWO LOADS**
- **Hydraulic retractable side frames** for transport
- **Fold-up catwalks**
- Fast and easy **hydraulic counter weight removal**
- **100%** self-assembly



**Link-Belt**  
CRANES

Link-Belt Construction Equipment Company  
Lexington, Kentucky | www.linkbelt.com

© Link-Belt is a registered trademark. Copyright 2016. All rights reserved. We reserve the right to change designs and specifications at any time. Litho in U.S.A. 12/16 1844 #4502 (supersedes #4446)