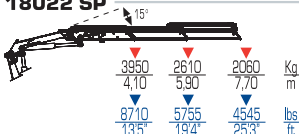
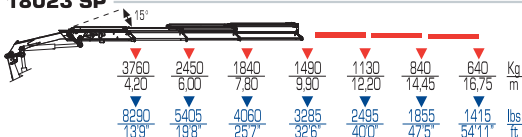




18022 SP



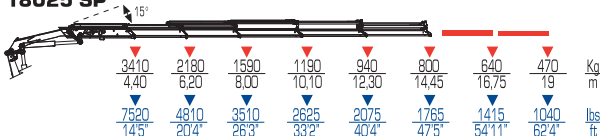
18023 SP



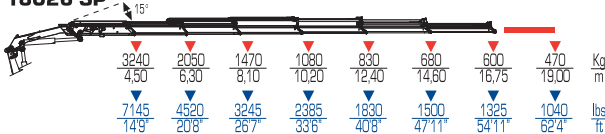
18024 SP



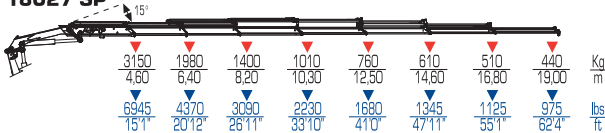
18025 SP



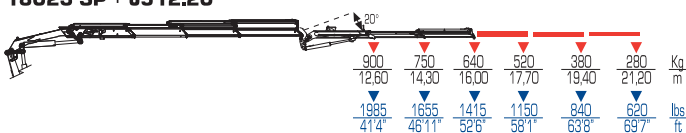
18026 SP



18027 SP

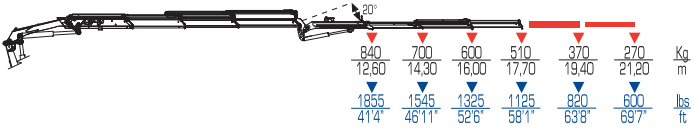


18023 SP + J512.20

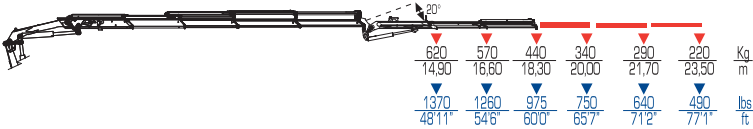


	tm	ft lbs	l/min	gals/min	Mpa	Psi
18022 SP	16,2	117140	80	21	30,5	4420
18023 SP	15,8	114220	80	21	30,5	4420
18024 SP	15,3	110720	80	21	30,5	4420
18025 SP	15	108520	80	21	30,5	4420
18026 SP	14,6	105460	80	21	30,5	4420
18027 SP	14,5	104810	80	21	30,5	4420
18023 SP + J512.20	-	-	80	21	30,5	4420
18023 SP + J513.20	-	-	80	21	30,5	4420
18024 SP + J512.20	-	-	80	21	30,5	4420
18024 SP + J513.20	-	-	80	21	30,5	4420
18024 SP + J514.20	-	-	80	21	30,5	4420
18025 SP + J252	-	-	80	21	30,5	4420

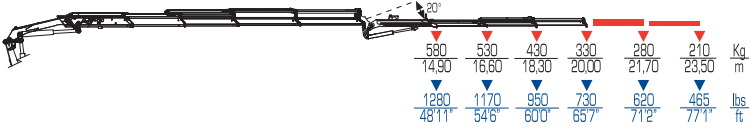
18023 SP + J513.20



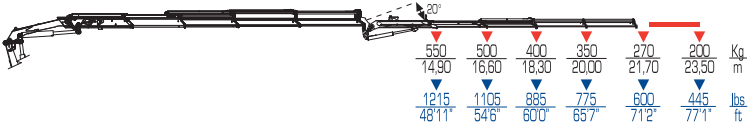
18024 SP + J512.20



18024 SP + J513.20



18024 SP + J514.20



18025 SP + J252



°	kg		lbs		mm		ft		mm		ft	
	ST	ST	LC	LC	mm	ft	mm	ft	mm	ft	mm	ft
400	1930	4255	2050	4520	2455	8'1"	2250	7'3"	965	3'1"		
400	2070	4565	2190	4830	2455	8'1"	2250	7'3"	965	3'1"		
400	2195	4840	2315	5105	2455	8'1"	2250	7'3"	965	3'1"		
400	2320	5115	2440	5380	2455	8'1"	2305	7'6"	1025	3'3"		
400	2430	5360	2550	5625	2455	8'1"	2365	7'7"	1045	3'4"		
400	2525	5570	2645	5835	2455	8'1"	2405	7'9"	1085	3'5"		
400	2570	5670	2690	5935	2500	8'2"	2645	8'6"	1210	3'10"		
400	2625	5790	2745	6055	2500	8'2"	2645	8'6"	1210	3'10"		
400	2710	5975	2830	6240	2500	8'2"	2660	8'7"	1210	3'10"		
400	2765	6100	2885	6365	2500	8'2"	2660	8'7"	1210	3'10"		
400	2815	6210	2935	6475	2500	8'2"	2660	8'7"	1210	3'10"		
400	2820	6220	2940	6485	2500	8'2"	2580	8'5"	1210	3'10"		