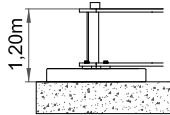
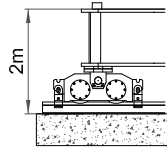


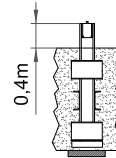
A(i)



B

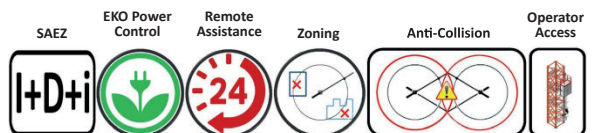


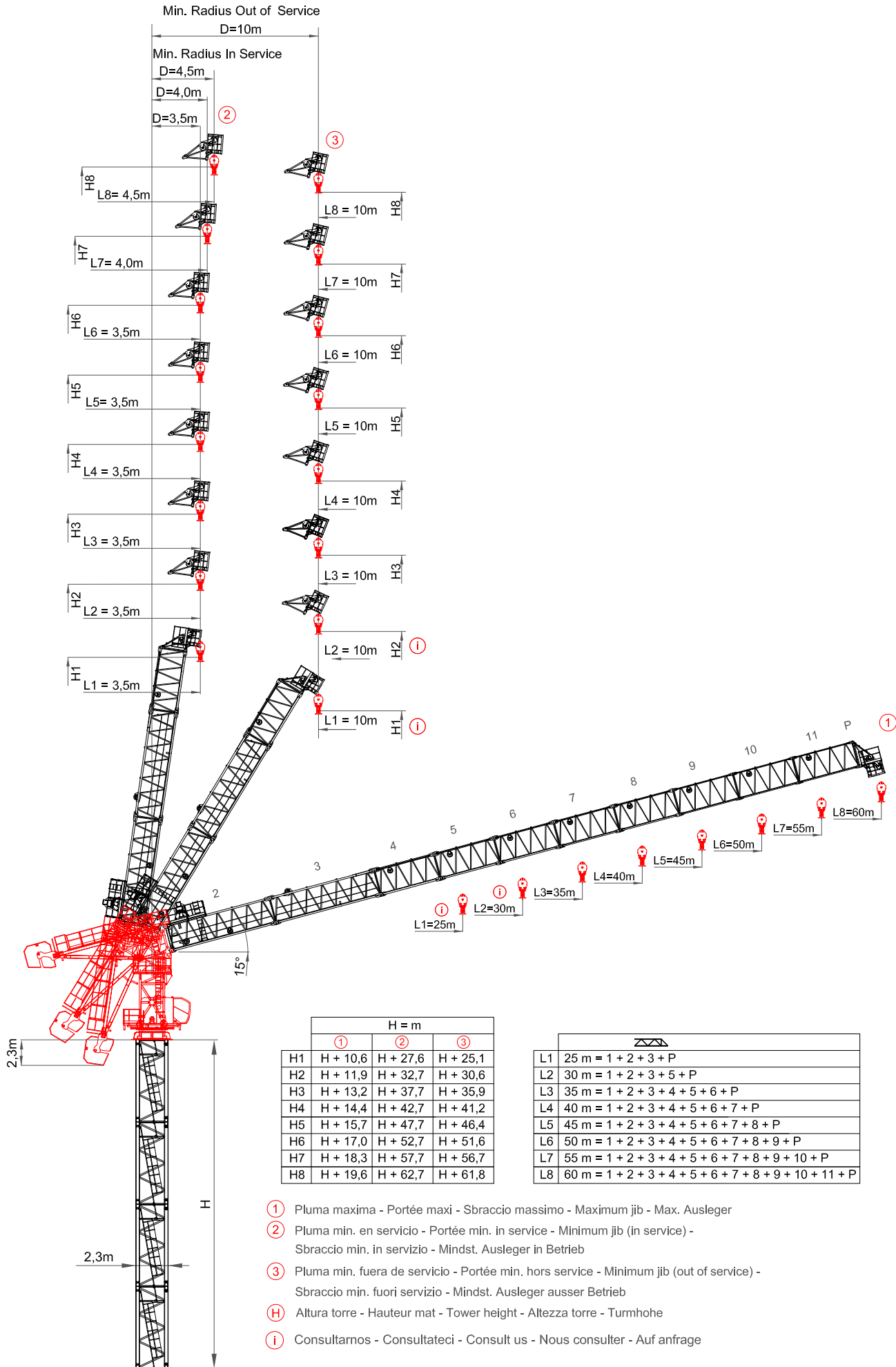
C(i)



D

ⓘ Consultarnos - Consultateci - Consult us - Nous consulter - Auf anfrage - советоваться





	H = m		
	①	②	③
H1	H + 10,6	H + 27,6	H + 25,1
H2	H + 11,9	H + 32,7	H + 30,6
H3	H + 13,2	H + 37,7	H + 35,9
H4	H + 14,4	H + 42,7	H + 41,2
H5	H + 15,7	H + 47,7	H + 46,4
H6	H + 17,0	H + 52,7	H + 51,6
H7	H + 18,3	H + 57,7	H + 56,7
H8	H + 19,6	H + 62,7	H + 61,8

	L = m
	Configuration
L1	25 m = 1 + 2 + 3 + P
L2	30 m = 1 + 2 + 3 + 5 + P
L3	35 m = 1 + 2 + 3 + 4 + 5 + 6 + P
L4	40 m = 1 + 2 + 3 + 4 + 5 + 6 + 7 + P
L5	45 m = 1 + 2 + 3 + 4 + 5 + 6 + 7 + 8 + P
L6	50 m = 1 + 2 + 3 + 4 + 5 + 6 + 7 + 8 + 9 + P
L7	55 m = 1 + 2 + 3 + 4 + 5 + 6 + 7 + 8 + 9 + 10 + P
L8	60 m = 1 + 2 + 3 + 4 + 5 + 6 + 7 + 8 + 9 + 10 + 11 + P

- ① Pluma maxima - Portée maxi - Sbraccio massimo - Maximum jib - Max. Ausleger
- ② Pluma min. en servicio - Portée min. in service - Minimum jib (in service) - Sbraccio min. in servizio - Mindst. Ausleger in Betrieb
- ③ Pluma min. fuera de servicio - Portée min. hors service - Minimum jib (out of service) - Sbraccio min. fuori servizio - Mindst. Ausleger ausser Betrieb
- (H) Altura torre - Hauteur mat - Tower height - Altezza torre - Turmhöhe
- (i) Consultarnos - Consultateci - Consult us - Nous consulter - Auf anfrage

Curvas de cargas - Load diagrams - Lastkurven - Courbes de charges - Curve di carico - График грузоподъёмности

60 m



Max. load	10	15	20	25,7	30	35	40	45	50	55	60	m
25,7m	8000	8000	8000	8000	6820	5789	5015	4414	3932	3538	3200	Kg
Max. load	10	15	20	25,7	30	35	40	45	50	55	60	m
25,7m	8000	8000	8000	8000	6820	5789	5015	4414	3932	3538	3200	Kg

55 m



Max. load	10	15	20	25	32,1	35	40	45	50	55	m
32,1m	8000	8000	8000	8000	8000	7323	6358	5608	5007	4500	Kg
Max. load	10	15	20	25	32,1	35	40	45	50	55	m
32,1m	8000	8000	8000	8000	8000	7323	6358	5608	5007	4500	Kg

50 m



Max. load	10	15	20	25	30	35	40	45	50	m
36m	8000	8000	8000	8000	8000	8000	7193	6290	5600	Kg
Max. load	10	17,9	20	25	30	35	40	45	50	m
17,9m	16000	16000	14359	11640	9635	8200	7126	6290	5600	Kg

45 m



Max. load	10	15	20	25	30	37,4	40	45	m
37,4m	8000	8000	8000	8000	8000	8000	7780	6700	Kg
Max. load	10	19,2	20	25	30	35	40	45	m
19,2m	16000	16000	15372	12430	10290	8762	7618	6700	Kg

40 m



Max. load	10	15	20	25	30	35	40	m
40m	8000	8000	8000	8000	8000	8000	7900	Kg
Max. load	10	15	20	25	30	35	40	m
20m	16000	16000	16000	12939	10730	9125	7900	Kg

35 m



Max. load	10	15	20	25	30	35	m
35m	8000	8000	8000	8000	8000	8000	Kg
Max. load	10	15	20,4	25	30	35	m
20,4m	16000	16000	16000	13106	10853	9200	Kg

30 m





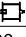
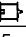

Max. load	10	15	20	25	30	m
30m	8000	8000	8000	8000	8000	Kg
Max. load	10	15	20	21,1	30	m
21,1m	16000	16000	16000	16000	11100	Kg





25 m








Max. load	10	15	20	25	m
25m	8000	8000	8000	8000	Kg
Max. load	10	15	22,6	25	m
22,6m	16000	16000	16000	14000	Kg



Mecanismos - Mechanisms - Antriebe - Mécanismes - Meccanismi - Приводы

150 Hp (110Kw) INV									
		D-Max 520m 	H. 520m Ø24			D-Max 520m 	H. 260m Ø24		
	m/min	0-70	0-90	0-124	0-280	0-35	0-45	0-62	0-140
	Kg	8000	6000	4500	1300	16000	12000	9000	2600
	Kw	110	110	110	110	110	110	110	110

			
		2,2 min. de 15° a 85° 2,2 minutes from 15° to 85°	
	Kw	30	
	r.p.m.	0-0,8	
	Kw	2 x 11	
	m/min	12-24	
	Kw	4 x 3	

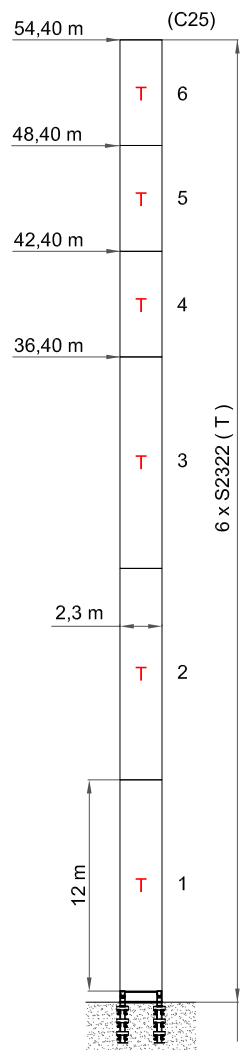
- * Opcional / Optional / Opzionale
-  Elevación / Hoisting / Heben / Levage / Sollevamento
-  Elevación de pluma / Luffing / Ausleger-Einziehen / Relevage / Brandeggio
-  Orientación / Slewing / Schwenken / Orientation / Rotazione
-  Traslacion / Travelling / Schienenfahren / Translation / Traslazione
-  Cable / Rope / Seil / Câble / Fune

150Hp (110Kw) - INV

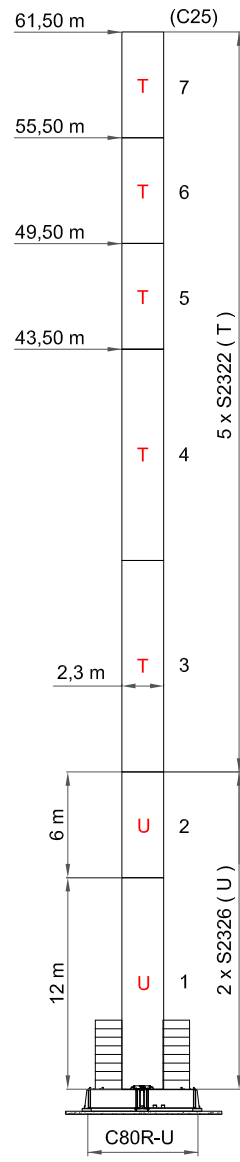
		400 V 50 Hz I _{max} = 330 A Fuse= 400 A			TOTAL POWER 195 KVA	GENERATOR 310 KVA	100m	150m	200m
		* 480 V 60 Hz I _{max} = 275 A Fuse = 350 A					3PX120+GND	3PX120+GND	3PX120+GND
2000/14/CEE 2005/88/CEE	2006/95 /CEE								

FEM 1005-C25 / EN 14439 - Mástil / Reacciones - Masts / Reactions - Mast / Eckdrücke - Mat / Réactions - Torre / Réazioni - Реакции / Комплектация башни

T = S2322 16/16 M45L
U = S2326 16/16 M52L



D



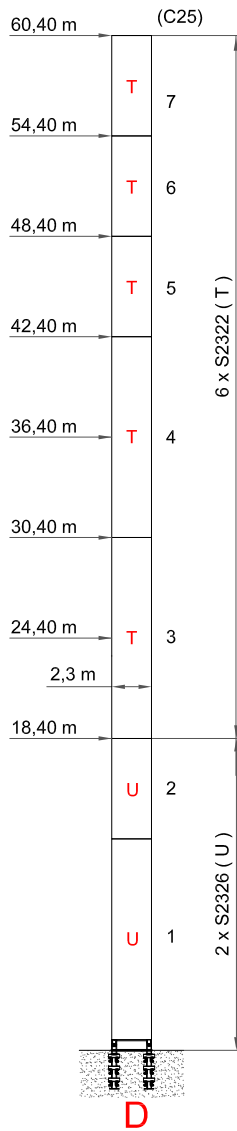
B

Zigzag (m)	max. H(m)	
	FEM 1005 C25	
25	54,40	
30	48,40	
35	48,40	
40	42,40	
45	42,40	
50	42,40	
55	36,40	
60	36,40	

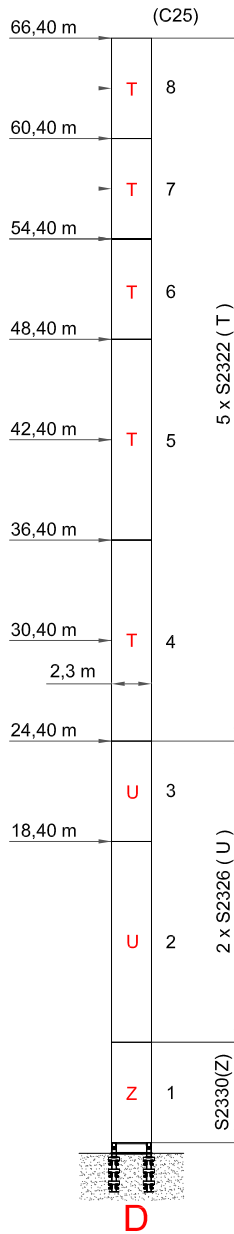
Zigzag (m)	max. H(m)	
	FEM 1005 C25	
25	61,50	
30	55,50	
35	55,50	
40	55,50	
45	49,50	
50	49,50	
55	43,50	
60	43,50	

FEM 1005-C25 / EN 14439 - Mástil / Reacciones - Masts / Reactions - Maste / Eckdrücke - Mat / Réactions - Torre / Réazioni - Реакции / Комплектация башни

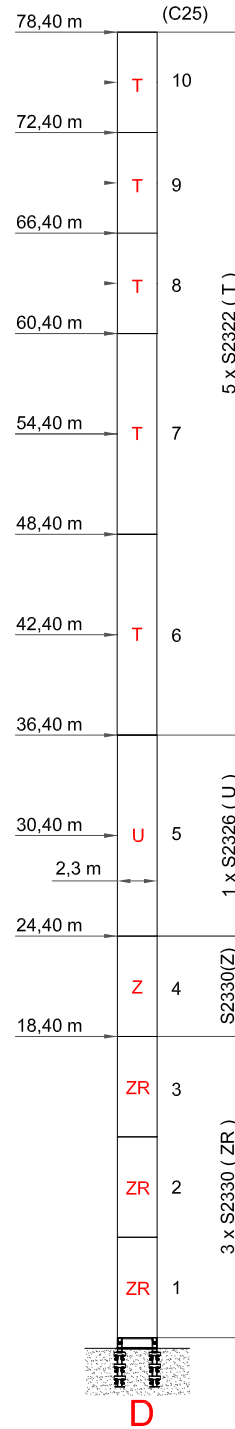
T = S2322 16/16 M45L
 U = S2326 16/16 M52L
 Z = S2330 16/24 M52L
 ZR = S2330R 24/24 M52L



max. H(m)	FEM 1005 C25	
	(m)	
25	60,40	
30	60,40	
35	60,40	
40	54,40	
45	54,40	
50	54,40	
55	48,40	
60	48,40	



max. H(m)	FEM 1005 C25	
	(m)	
25	66,40	
30	66,40	
35	60,40	
40	60,40	
45	60,40	
50	60,40	
55	54,40	
60	54,40	



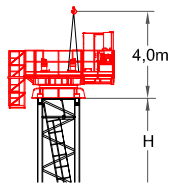
max. H(m)	FEM 1005 C25	
	(m)	
25	78,40	
30	78,40	
35	72,40	
40	72,40	
45	72,40	
50	66,40	
55	66,40	
60	66,40	

Proceso de montaje - Assembling – Zusammensetzung - Montage- Montaggio - монтаж

1st STEP
OPTION A

TURNTABLE
CABIN SUPPORT

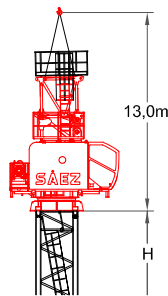
13,900 KG



2nd STEP
OPTION A

TOWER TOP SECTION
JIB 1 SECTION

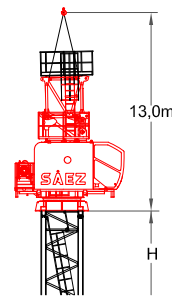
14,400 KG



1st & 2nd STEP
OPTION B

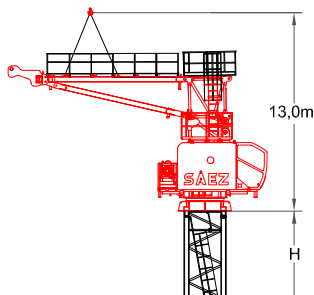
TURNTABLE
TOWER TOP SECTION
CABIN SUPPORT
JIB SECTION 1

28,300 KG



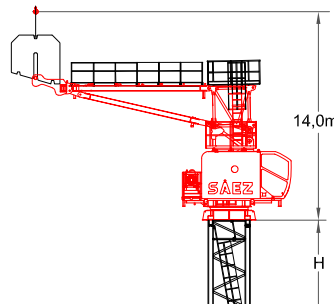
3rd STEP

COUNTERJIB
5,500 KG

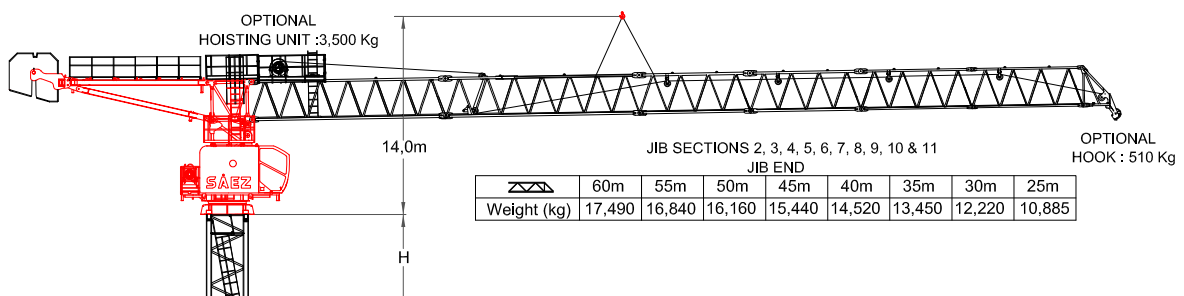


4th STEP

2 x COUNTER JIB BALLAST
2 x 7000 KG

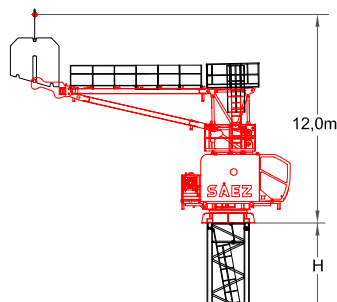


5th STEP

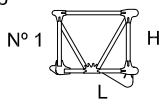
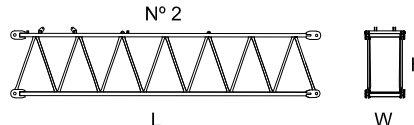
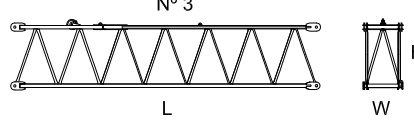
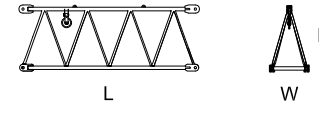
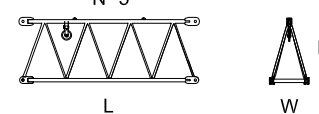
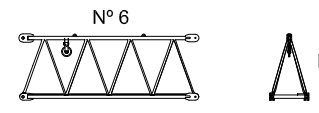
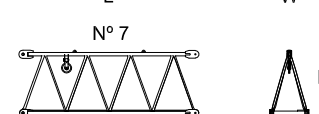
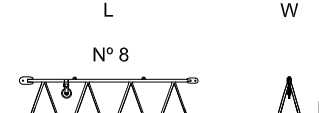

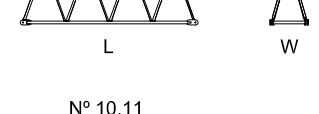
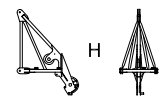


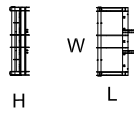
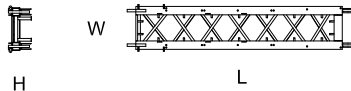
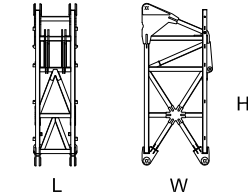
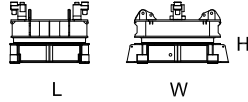
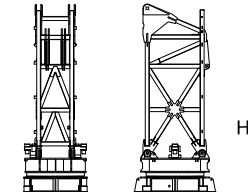
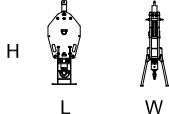
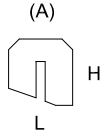
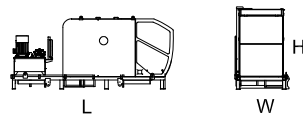
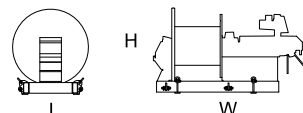
6th STEP

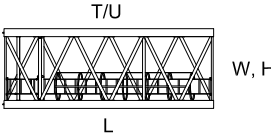
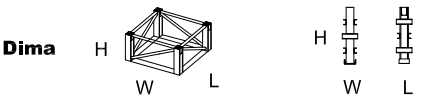
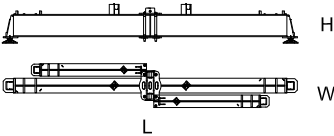


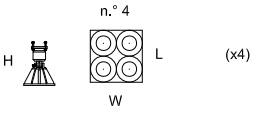
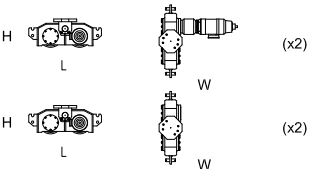
3 x COUNTERJIB BALLAST
3 X 7000 KG


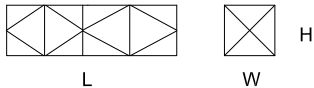
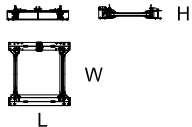
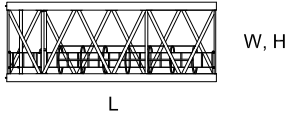
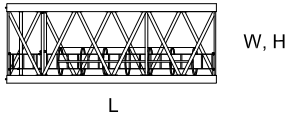


Dimensiones y transporte - dimensions and transport - Abmessungen und Transport - dimensions et des transporte - dimensioni e trasporti - Размеры и транспорта

	L(m)	W(m)	H(m)	Peso(Kg)
<p>Pluma tramo primero / Jib heel section / Ausleger-Anlenkstück / Pied de fleche / Settore articolato di braccio</p> <p>Nº 1</p> 	3,10	1,45	2,75	3860
<p>Elemento intermedio de pluma / Intermediate jib section / Ausleger-Zwischenstück / Élément interm. de fleche / Spezzone di braccio</p> <p>Nº 2</p>  <p>Nº 3</p>  <p>Nº 4</p>  <p>Nº 5</p>  <p>Nº 6</p>  <p>Nº 7</p>  <p>Nº 8</p>  <p>Nº 9</p>  <p>Nº 10,11</p> 	9,02	1,35	2,46	4320
	9,02	1,35	2,35	3820
	5,25	1,35	2,35	1580
	5,25	1,35	2,35	1245
	5,21	1,35	2,35	1150
	5,21	1,35	2,35	1030
	5,18	1,35	2,35	965
	5,16	1,35	2,35	705
	5,16	1,35	2,35	650
<p>Elemento final de pluma / Intermediate jib section / Ausleger-Zwischenstück / Élément interm. de fleche / Spezzone di braccio</p> 	1,81	1,27	2,70	450

	L(m)	W(m)	H(m)	Peso(Kg)	
Cesto Contrapluma / Counter-jib basket / Gegenausleger / Contre-fleche / Controbraccio 	1,80	4,22	0,96	1960	
Contrapluma / Counter-jib / Gegenausleger / Contre-fleche / Controbraccio 	5,52	2,00	0,67	3450	
Unidad de rotacion / Complete slewing unit / Drehbühne / Orientation / Rotazione 	2,95	1,65	7,25	14400	
	2,32	2,98	1,80	10000	
	2,95	2,98	9,05	24400	
Gancho / Hook / Lasthaken / Crochet / Gancio 	0,5	0,2	1,6	510	
Bloque de contrapeso / Counterweight blocks / Gegengewichtsblöcke / Bloc de contrepoids / Blocco di contrappeso 	A	2,2	0,51	2,2	7000
Cabina y soporte / Cabin and platform / Kabine und wartungs / Cabine et support / Cabina e supporto 	5,2	1,75	2,40	3400	
Equipo de elevacion / Hoist winch / Heben / Levage / Sollevamento / подъёмник 	2,75	1,6	1,6	3500	

	L(m)	W(m)	H(m)	Peso(Kg)
Elemento de torre S23 / Tower section S23 / Turmstück S23 / Élément de mât S23 / Elemento di torre S23 / Башенные секции S23				
	3	2,27	2,29	3250
	6	2,27	2,29	4780
	12	2,27	2,29	9000
	3	2,31	2,34	4134
	6	2,31	2,34	6200
	12	2,31	2,34	11180
	6	2,31	2,34	7825
	6	2,31	2,34	7925
				
Elemento de empotre / Foundation anchor / Fundamentanker / Pieds de scellement / El anegare / Анкерные крепления				
	0,5	0,5	2	370
	0,5	0,5	2	500
	0,5	0,5	2	1400
	0,5	0,5	2,4	2100
	0,5	0,5	2	2972
	0,5	0,5	2	3600
	2,31	2,34	0,8	1650
				
Base C80R-U / base C80R-U / Hauptträger für fundamentkreuz C80R-U / Base C80R-U / Base C80R-U				
	11,8	2,38	1,40	17200
				
Bloque lastre de base / Base ballast block / Grundballastblöcke / Bloc de lest de base / Blocco di zavorra alla base				
	4,5	0,51	0,9	5000
	5,8	0,4	1,5	8000
				
Bloque apoyo de base / Base support block / Grundballastblöcke / Bloc de appui de base / Blocco di appoggio alla base				
	2	0,5	2	5000
				
Niveladores / Levellers / Spindel pyramide / Niveleurs / Piedi regolabile				
	1,20	1,20	0,90	250
				
Traslacion / Travelling bogies / Kranfahren / Traslation / Traslazione				
	1,15	1,25	0,45	505
	1,15	0,25	0,45	450
				

	L(m)	W(m)	H(m)	Peso(Kg)
<p>Marco trepado externo / Tie-frame / Cadre d'encrage externe / Sopralzo con ancoraggio esterno / внешняя рамка пристежки</p> 	3,52	3,49	0,42	3900
<p>Jaula de telescopaje tipo S23 / Climbing cage type S23 / Hydraulikbühne S23 / Cage de telescopage type S23 / Gabbia di montaggio S23 / Монтажная обойма S23</p> <p>Completa / Full / Vollständige / Complete / completa / полный</p> 	11,6	3,2	3,3	13500
<p>Estructura / Steel frame / Struktur / Construction / Struttura / структура</p>				9550
<p>Hidraulico y accesorios / Hydraulic and accessories / Hydraulik-und Zubehör / hydraulique et accessoires / idrauliche ed accessori / Гидравлические и аксессуары</p>				3950
<p>Marco trepado interno S23 / Floor climbing frame S23 / Cadre d'encrage interne S23 / Sopralzo interno S23 / внутренняя рамка пристежки S23</p> 	3,2	2,8	0,6	4720
<p>Hidraulico y accesorios / Hydraulic and accessories / Hydraulik-und Zubehör / hydraulique et accessoires / idrauliche ed accessori / Гидравлические и аксессуары</p>				3081
<p>Tramo trep. A S23 / Tower section A S23 / Turmstück A S23 / Élément de mât A S23 / Elemento di torre a S23 / Башенные секции A S23</p> 	A 6	2,27	2,29	4854
<p>Tramo trep. B S23 / Tower section B S23 / Turmstück B S23 / Élément de mât B S23 / Elemento di torre B S23 / Башенные секции B S23</p> 	B 6	2,27	2,29	4850



40" HC x 11 - HBG 36 m



x 10 - HBG 36 m

