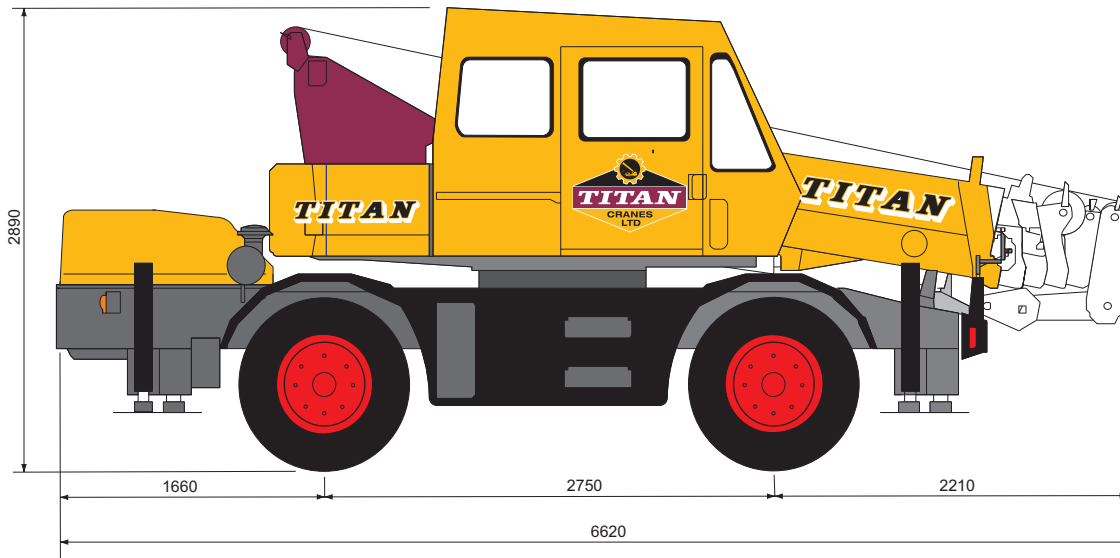




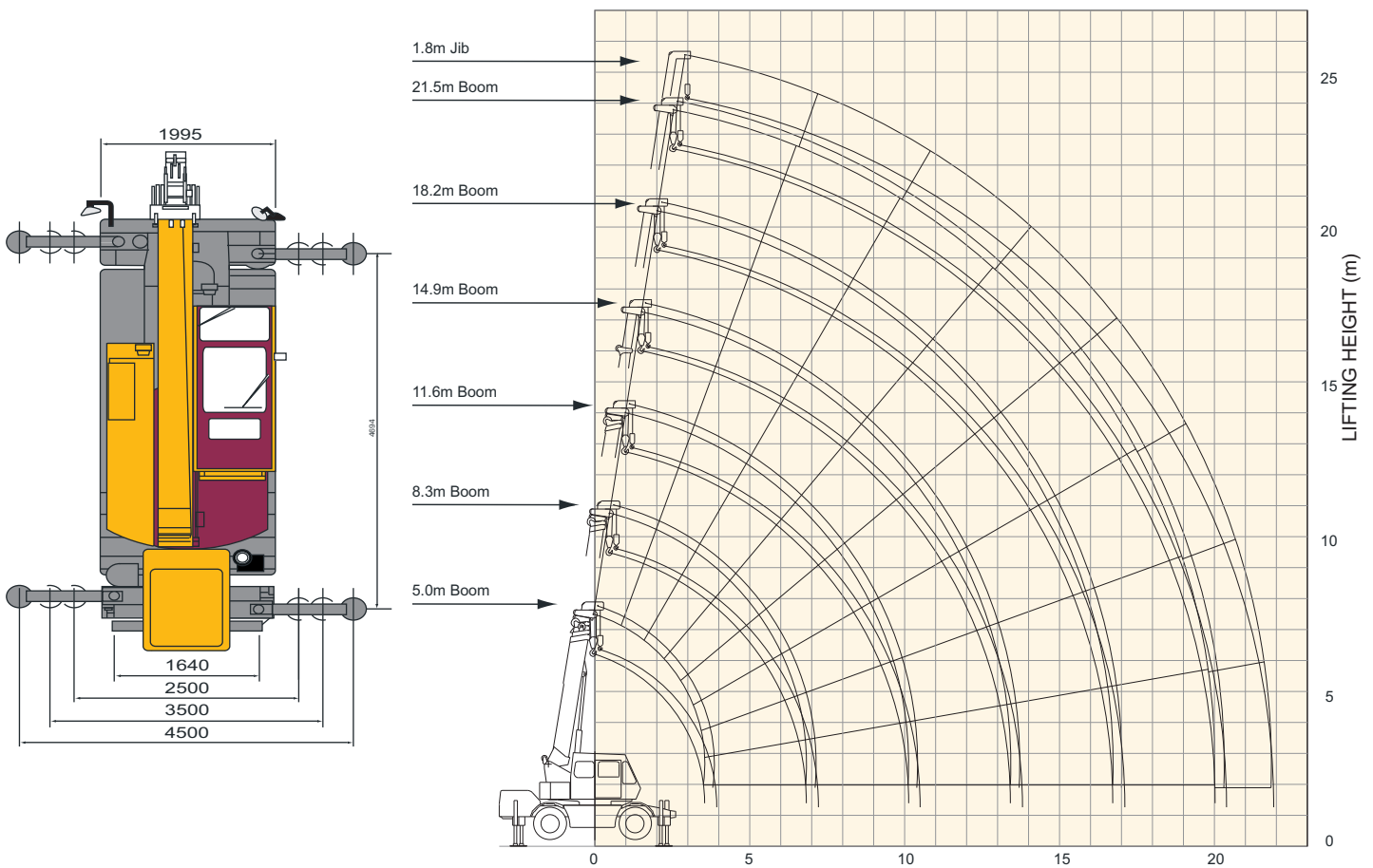
KATO KR10H

10 TONNE CITY CRANE



GENERAL DIMENSIONS

WORKING RANGE



AUCKLAND
 Walsley Road
 Otahuhu
 Ph: 09 276 3019
 Fax: 09 276 5442

TAURANGA
 56 Hull Road
 Mt Maunganui
 Ph: 07 574 2920
 Fax: 07 574 2921

NEW PLYMOUTH
 Breakwater Road
 Moturoa
 Ph: 06 751 0400
 Fax: 06 751 3726

LOWER HUTT
 Port Road
 Seaview
 Ph: 04 568 3104
 Fax: 04 586 4185

CHRISTCHURCH
 26 Birmingham Drive
 Christchurch
 Ph: 03 338 2818
 Fax: 03 338 2763

DUNEDIN
 53 Main South Road
 Burnside
 Ph: 03 488 5462
 Fax: 03 488 4006

INVERCARGILL
 119 North Road
 Invercargill
 Ph: 03 215 30
 Fax: 03 215 4244

Moving with the times, lifting quality customer service



KATO KR10H

10 TONNE CITY CRANE

LOAD RATINGS IN TONNES

360°

DIN 15019-2

Main boom

Work Radius (m)	Outriggers Fully Extended (4.5m) 360° Full Range						Outriggers Intermediately Extended (3.5m) Over Side					
	5.0m Boom	8.3m Boom	11.6m Boom	14.9m Boom	18.2m Boom	21.5m Boom	5.0m Boom	8.3m Boom	11.6m Boom	14.9m Boom	18.2m Boom	21.5m Boom
	1.5	10.00	4.90	4.90				10.00	4.90	4.90		
2.0	10.00	4.90	4.90	4.00			10.00	4.90	4.90	4.00		
2.5	10.00	4.90	4.90	4.00	4.00		10.00	4.90	4.90	4.00	4.00	
3.0	8.00	4.90	4.90	4.00	4.00	2.00	8.00	4.90	4.90	4.00	4.00	2.00
3.5	6.10	4.90	4.90	4.00	4.00	2.00	6.10	4.90	4.90	4.00	4.00	2.00
3.9		4.90	4.90	4.00	3.60	2.00		4.90	4.90	4.00	3.60	2.00
4.2		4.90	4.50	4.00	3.40	2.00		4.90	4.50	4.00	3.40	2.00
4.5		4.55	4.20	3.75	3.20	2.00		4.55	4.20	3.75	3.20	2.00
5.0		4.05	3.80	3.40	2.90	2.00		3.71	3.70	3.40	2.90	2.00
5.5		3.70	3.45	3.05	2.65	2.00		3.05	2.99	3.05	2.65	2.00
6.0		3.35	3.15	2.80	2.47	2.00		2.54	2.54	2.80	2.47	2.00
6.5		3.05	2.90	2.55	2.30	1.90		2.13	2.13	2.35	2.30	1.90
7.0			2.65	2.35	2.15	1.80			1.83	2.04	2.15	1.80
8.0			2.25	2.00	1.90	1.60			1.32	1.53	1.64	1.60
9.0			1.77	1.75	1.65	1.40			0.96	1.18	1.29	1.40
10.0			1.37	1.53	1.45	1.23			0.71	0.92	1.03	1.20
11.0				1.33	1.28	1.10				0.72	0.83	0.94
12.0				1.15	1.13	1.00				0.52	0.68	0.77
13.0				0.82	1.00	0.90				0.36	0.53	0.61
14.0					0.78	0.80					0.37	0.48
15.0					0.63	0.72					0.27	0.36
16.0					0.53	0.65					0.17	0.27
17.0						0.57						0.18
18.0						0.50						
19.0						0.35						
20.0						0.28						
Critical Boom Angle	-	-	-	-	-	-	-	-	-	-	-	30°
Standard Hook	for 10 ton (Hook Weight: 75kg)						for 10 ton (Hook Weight: 75kg)					
Parts of line	8			4			8			4		

Work Radius (m)	Outriggers Intermediately Extended (2.5m) Over Side						Outriggers Completely Retracted (Blocked on Vertical Cyls) Over Side					
	5.0m Boom	8.3m Boom	11.6m Boom	14.9m Boom	18.2m Boom	21.5m Boom	5.0m Boom	8.3m Boom	11.6m Boom	14.9m Boom	18.2m Boom	21.5m Boom
	1.5	10.00	4.90	4.90				8.00	4.90	4.90		
2.0	10.00	4.90	4.90	4.00			5.39	4.90	4.90	4.00		
2.5	7.00	4.90	4.90	4.00	4.00		3.56	3.40	3.35	3.16	3.17	
3.0	5.19	4.90	4.90	4.00	4.00	2.00	2.55	2.44	2.38	2.50	2.51	2.00
3.5	3.97	3.96	3.71	4.00	4.00	2.00	1.94	1.78	1.77	1.99	2.00	2.00
3.9		3.25	3.04	3.36	3.42	2.00		1.42	1.42	1.58	1.69	1.70
4.2		2.79	2.64	2.96	3.02	2.00		1.22	1.22	1.38	1.49	1.55
4.5		2.44	2.33	2.55	2.71	2.00		1.07	1.01	1.18	1.29	1.40
5.0		1.98	1.88	2.09	2.25	2.00		0.81	0.76	0.97	1.03	1.14
5.5		1.63	1.52	1.74	1.85	2.00		0.61	0.56	0.77	0.83	0.94
6.0		1.32	1.27	1.43	1.59	1.65		0.46	0.40	0.57	0.68	0.79
6.5		1.12	1.06	1.23	1.36	1.45		0.31	0.25	0.42	0.53	0.63
7.0			0.86	1.02	1.19	1.24				0.31	0.42	0.48
8.0			0.56	0.77	0.88	0.94						0.28
9.0			0.30	0.52	0.63	0.68						
10.0				0.31	0.42	0.53						
11.0					0.27	0.38						
12.0						0.23						
13.0												
14.0												
15.0												
16.0												
17.0												
18.0												
19.0												
20.0												
Critical Boom Angle	-	-	-	40°	45°	50°	-	-	47°	55°	62°	64°
Standard Hook	for 10 ton (Hook Weight: 75kg)						for 10 ton (Hook Weight: 75kg)					
Parts of line	8			4			8			4		