



**SPIERINGS
KRANEN**

Make: SPIERINGS

Type: SK377-AT3

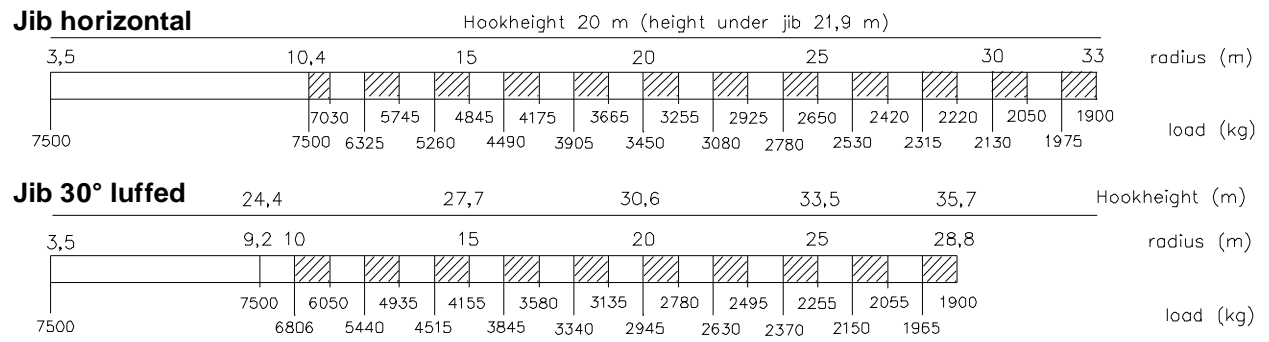
Crane specification

Serial number: <input type="text"/>	Crane group : 3 as per NEN 2018	Max. load	Max. radius with max. load	Max. capacity	Max. jib length
Year of construction: <input type="text"/>	Loadspectrum : 2 as per NEN 2018	7,5 tonne	10,4 m	78 tm	33 m
	Classification : A as per NEN 2018				
	Stability : as per NEN 2022				

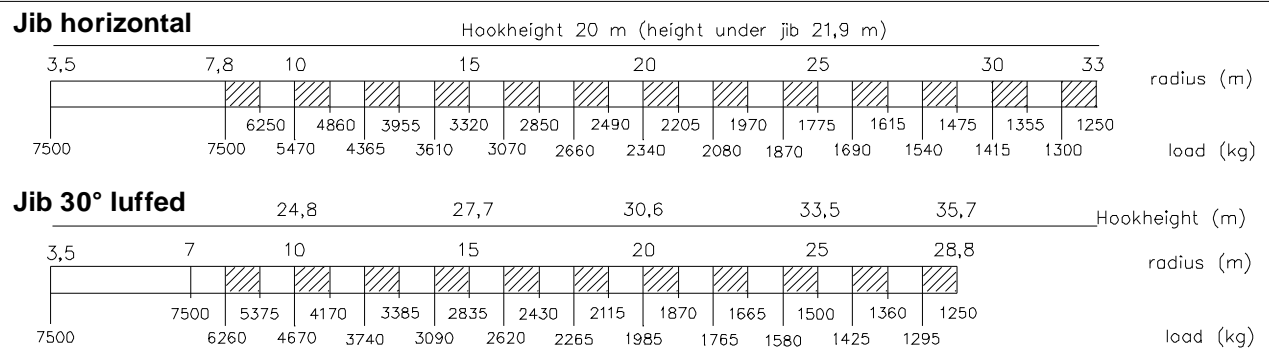
Speeds

Jib horizontal/ jib 30° luffed		
	m/min	kg
	18	7500
	27	3750
	36	1875
60	0	
	0 - 70 m/min	
	0 - 1 rpm	

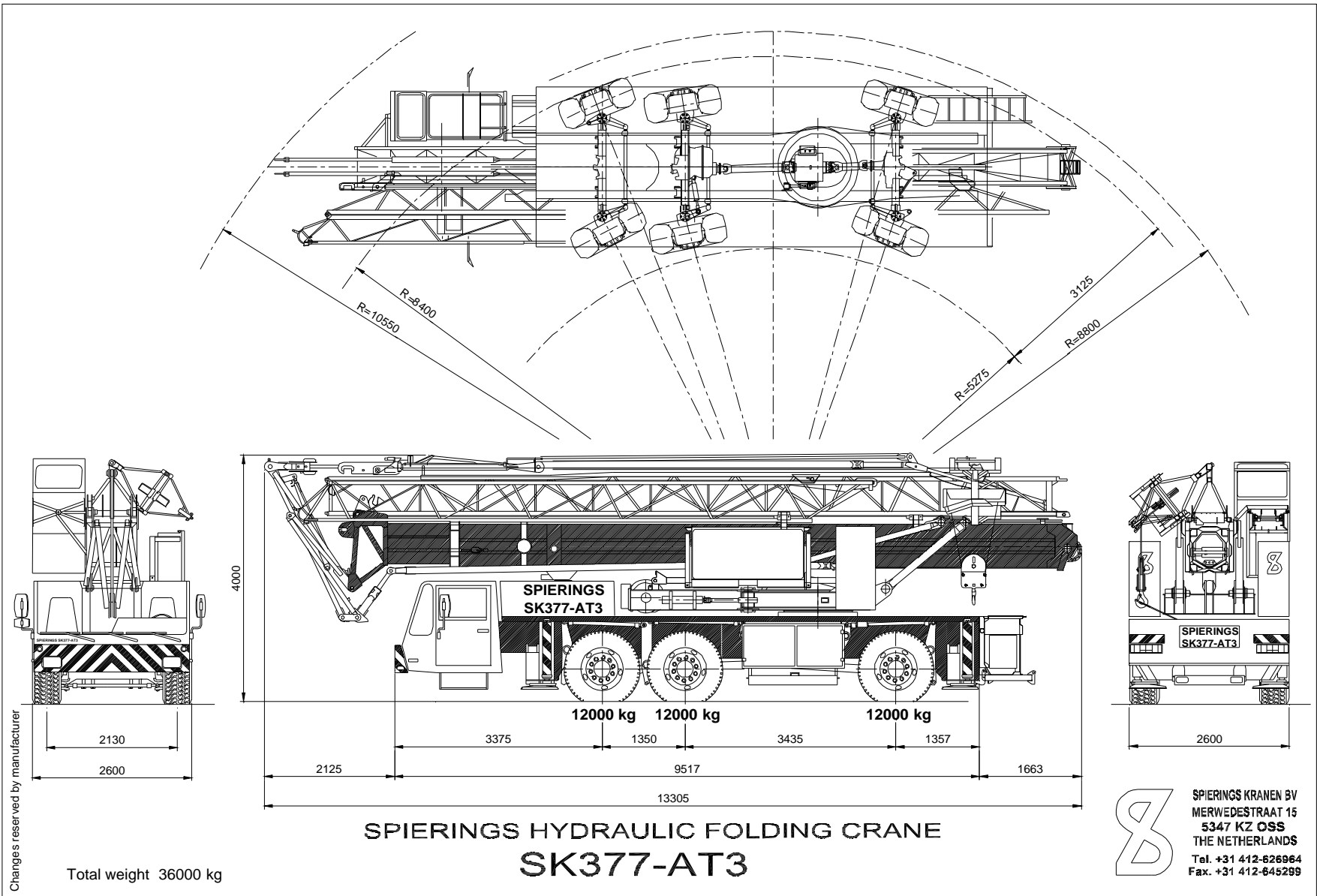
LIFTING CHART Outrigger spread 6,90 m x 6,40 m



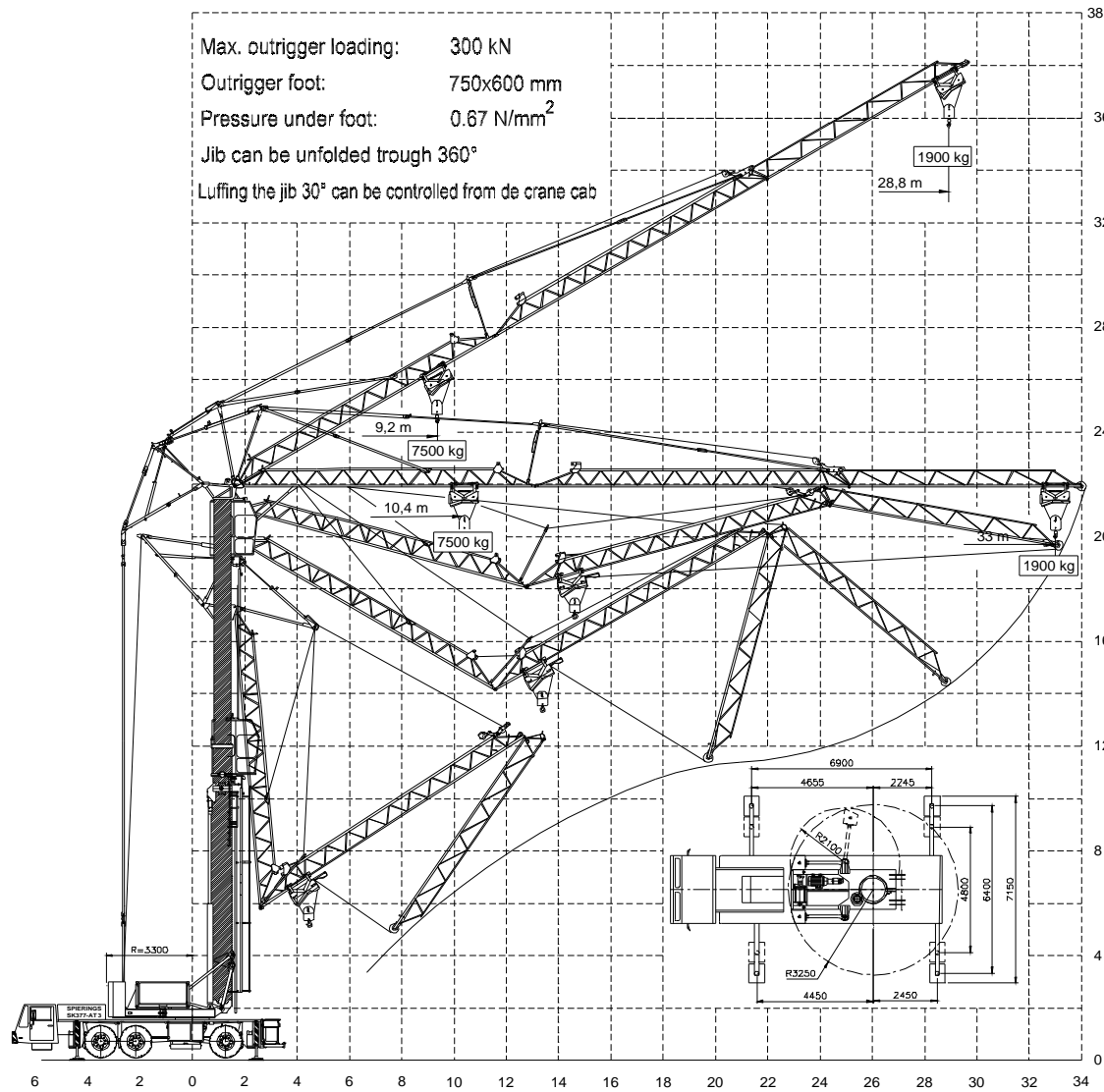
LIFTING CHART Outrigger spread 6,90 m x 4,80 m



All motions with hydraulic proportional controls
 Luffing the jib 30° can be controlled from crane cab or via remote control
 Driving with erected tower and jib, only with the jib horizontal and positioned over the front carriage, platform locked to the carrier and the outriggers fully extended (max. inclination 2°)
 Rated lifting capacity is net capacity
 Crane equipped with full counterweight: 6900kg
 360° continuous slewing, with outriggers out and down
 2 Outriggers positions: according to lifting chart
 Operation allowed up to a windforce of 8 on the Beaufortscale. (wind speed 20 m/sec.)
 Sail area of the load max. 1,0 m²/ tonne at a windforce of 8 on the Beaufortscale.
 Operating temperature range from -15° to 40° C.
 Max. line pull force 3750 kg; In all cases 2 parts of line
 The crane should be folded in at a windforce of 9 Bf (21m/sec) or when not in use for a longer period



Max. outrigger loading: 300 kN
 Outrigger foot: 750x600 mm
 Pressure under foot: 0.67 N/mm²
 Jib can be unfolded trough 360°
 Luffing the jib 30° can be controlled from de crane cab



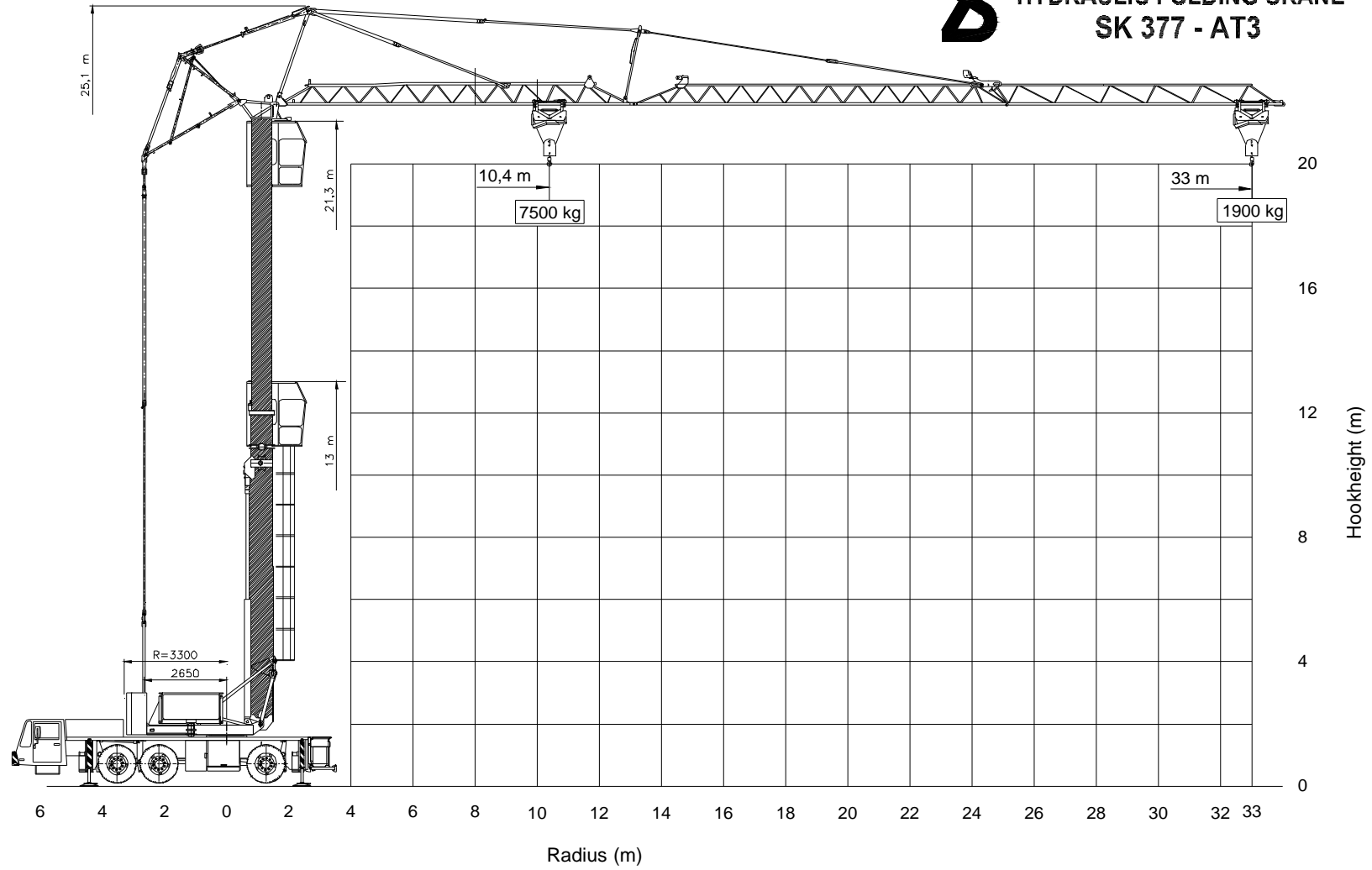
SPIERINGS HYDRAULIC FOLDING CRANE SK 377 - AT3



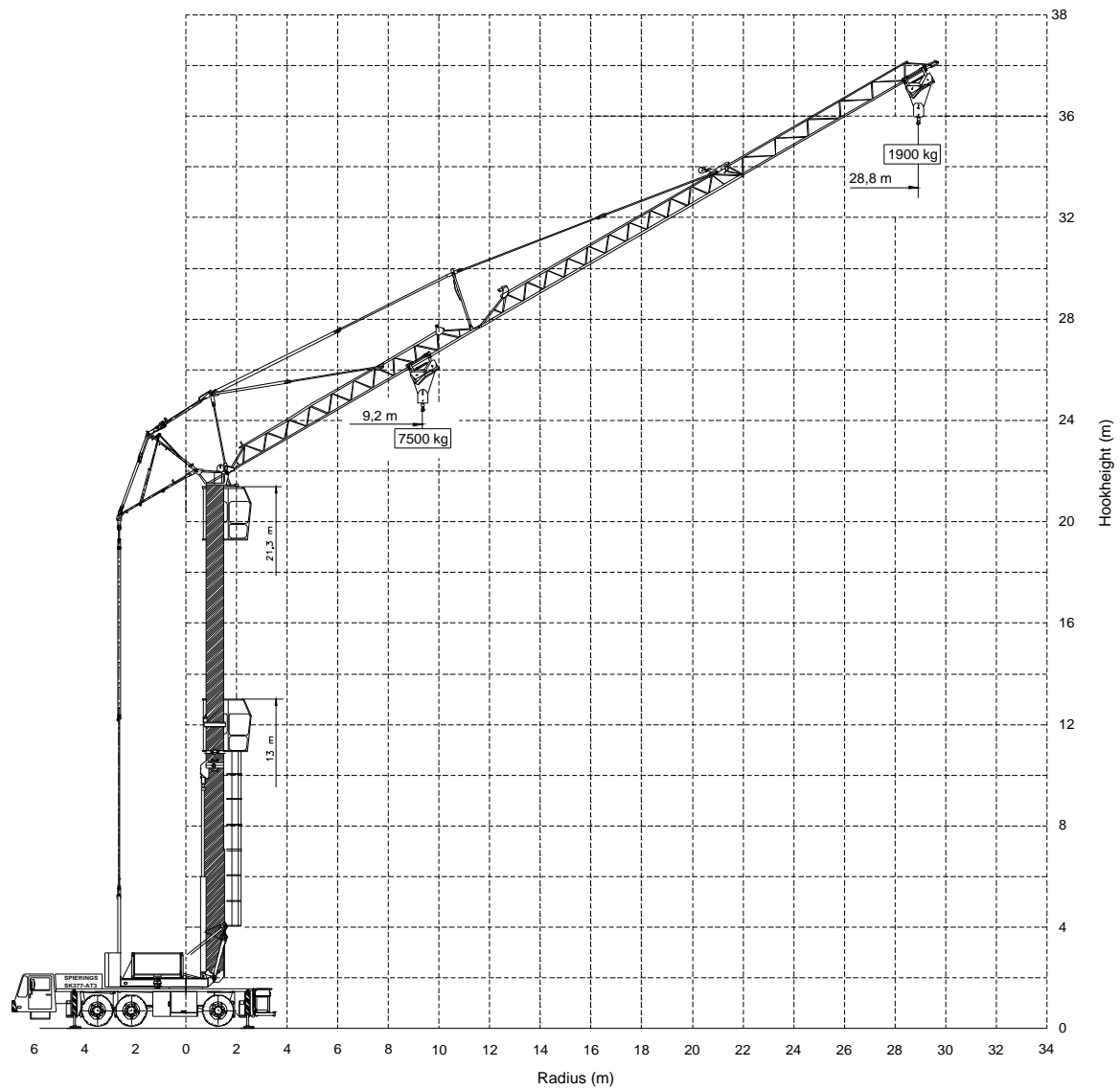
Merwedestraat 15
 5347 KZ Oss NL
 Tel.: +31 412 626964
 Fax: +31 412 645299



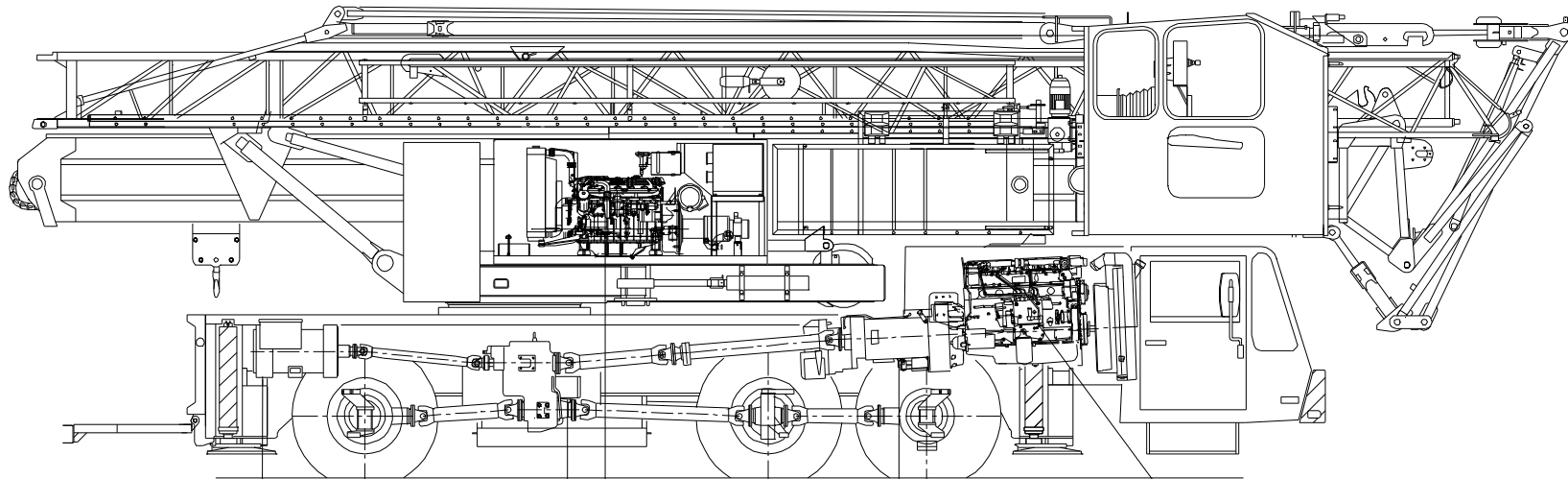
SPIERINGS
HYDRAULIC FOLDING CRANE
SK 377 - AT3



SPIERINGS HYDRAULIC FOLDING CRANE SK 377-AT3



Merwedestraat 15
5347 KZ Oss NL
Tel. (31) 412 626964
Fax (31) 412 645299



	Axle 3	Axle 2	Axle 1	Carrier diesel engine:
Generator:	Transferbox: STEYR VG1600/396 with PTO	Option: Crane diesel engine DETROIT VM D706 IE2	Gearbox: ZF 16S151	Euro III DAF PE 265C (9,6 ltr)
LSA 43.2 L7 - 70kVA	Road gear: $i=0,89$ Off road gear: $i=1,54$	Power: 96 kW (2600 tpm) Torque: 480 Nm (1300 tpm)	Manually operated with air power assistance + dry plate clutch	Power: 265 kW (2080 tpm) Torque: 1450 Nm (1500 tpm)

Axle 1 : steer drive axle ($i=7,58$)

Axle 2 : axle, (not steering, not driven)

Axle 3 : steer drive axle ($i=7,58$)

Suspension: hydro-pneumatic on all axles; stroke cyl. : 247 mm

Tyres : 445/75 R22,5

Max. speed carrier 85 km/uur

Min. speed carrier (engine at 1000 rpm) 1,8 km/uur

Overall weight 36000 kg

Drive train Spierings Folding Crane SK377-AT3

Changes subject to modifications



SPIERINGS KRANEN BV

MERWEDESTRAAAT 15
5347 KZ OSS
Nederland

Tel. 0412-626964
Fax. 0412-645299